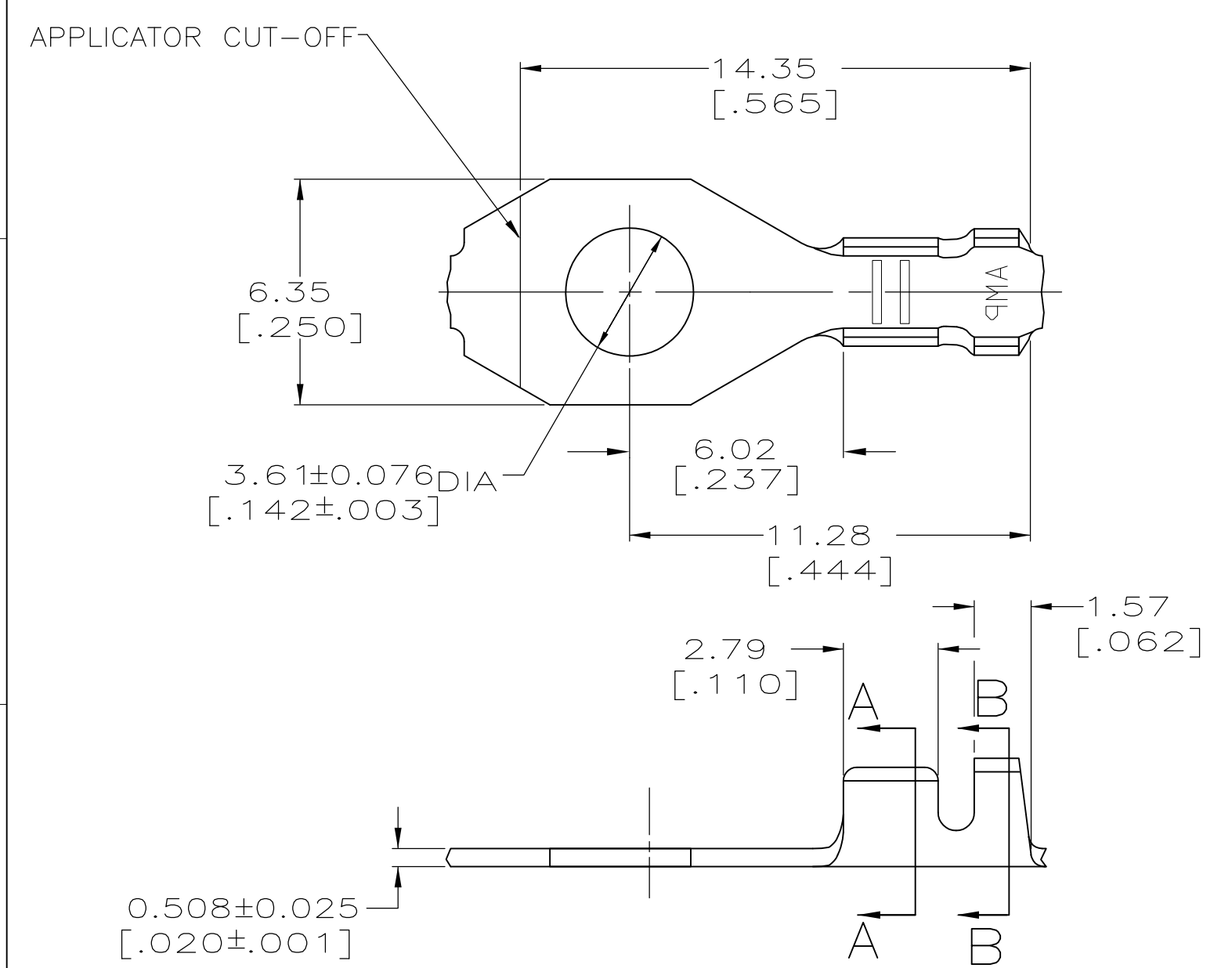
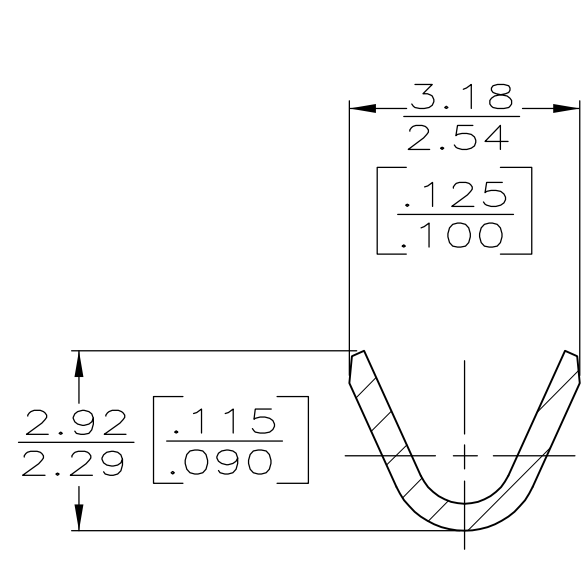


THIS DRAWING IS UNPUBLISHED. RELEASED FOR PUBLICATION  
 © COPYRIGHT - By - ALL RIGHTS RESERVED.

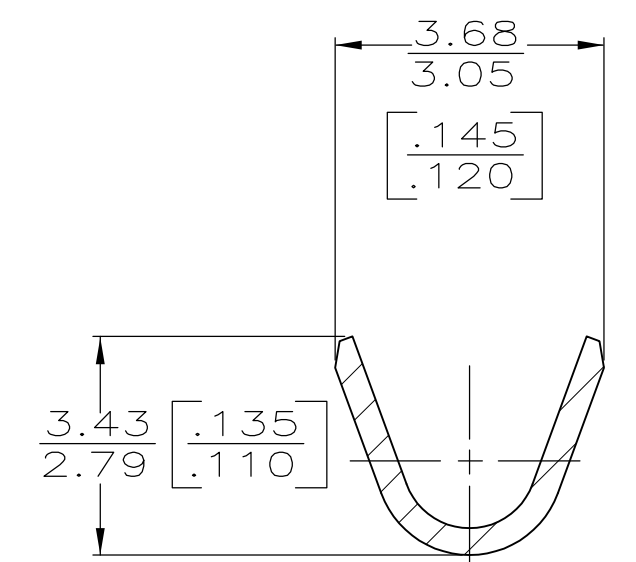
REVISIONS					
P	LTR	DESCRIPTION	DATE	DWN	APVD
	L1	REVISED PER ECR-17-004312	27MAR2017	NK	FV



1 CONTINUOUS STRIP ON REELS  
 2 8000 PER REEL



SECTION A-A  
SCALE 10:1



SECTION B-B  
SCALE 10:1

TIN PLATING	1.22-1.98 DIA [.048-.078]	0.13mm <sup>2</sup> -0.5mm <sup>2</sup> [26-20] AWG	60123-3 2
TIN PLATING	1.22-1.98 DIA [.048-.078]	0.13mm <sup>2</sup> -0.5mm <sup>2</sup> [26-20] AWG	60123-2
FINISH	INSULATION RANGE	WIRE RANGE	PART NUMBER

F OR O	2.79 [.110]	4.06 [.160]	F	2.03 [.080]	1.40 [.055]	0.5mm <sup>2</sup> [20]
					1.34 [.053]	0.3mm <sup>2</sup> [22]
					1.27 [.050]	0.2mm <sup>2</sup> [24]
					1.21 [.048]	0.13mm <sup>2</sup> [26]
TYPE	WIDTH	STRIP LENGTH ±0.38 [±.015]	TYPE	WIDTH	±0.051 [±.002] HEIGHT	WIRE
INSUL BARREL CRIMP			WIRE BARREL CRIMP			

THIS DRAWING IS A CONTROLLED DOCUMENT.

DIMENSIONS: mm [INCHES]

TOLERANCES UNLESS OTHERWISE SPECIFIED:

0 PLC ± -  
 1 PLC ± -  
 2 PLC ± -  
 3 PLC ± 0.38 [.015]  
 4 PLC ANGLES ± -

MATERIAL #2 HARD BRASS

FINISH SEE TABLE

DWN P FORTNEY 4/5/90  
 CHK JR RUTH 4/5/90  
 APVD -  
 PRODUCT SPEC -  
 APPLICATION SPEC -  
 WEIGHT 0.000000

**STE** TE Connectivity

NAME RING

SIZE A3 CAGE CODE 00779 DRAWING NO C-60123 RESTRICTED TO -

CUSTOMER DRAWING SCALE 6:1 SHEET 1 OF 1 REV L1