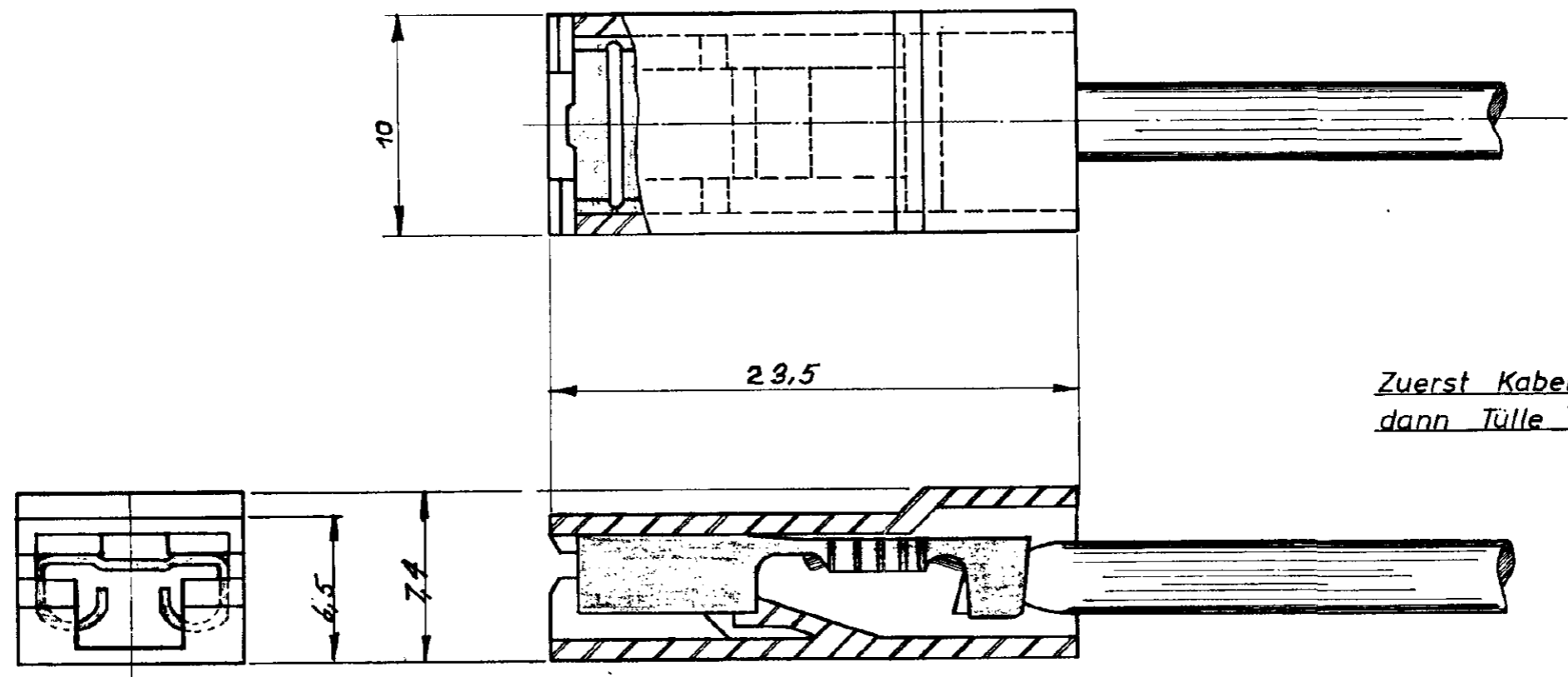


△ OBSOLETE	<del>925-068-3</del>	Thermopl. Polyester	natur	UL 94 V-0
OBSOLETE	<del>925-068-2</del>	Polyamid 6.6	schwarz	UL 94 V-2



Zuerst Kabelschuh anschlagen,  
dann Tülle aufstecken.

Zeichnung geschützt durch  
© Copyright 1967  
TEAMP DEUTSCHLAND GmbH  
Alle Rechte vorbehalten

△ OBSOLETE PARTS: OBSOLETE CIS STREAMLINING PER D.RENAUD/D.SINISI

△ OBSOLETE	<del>925-068-1</del>	Polypropylen (PPH)	natur	UL 94 V-2
	925-068-0	Polyamid 6.6	natur	
	Nummer	Werkstoff	Farbe	

### American Projection

LTR	REVISION RECORD	DR	CHK	DATE
C2	ECR-10-026307	KK	HMR	11FEB11
C1	REVISED PER ECO-09-026444	KK	AEG	NOV09
C	-3 Thermopl. Polyester	KK		4-77
B	-1 Polypropylen added	KK		10/74
A	DIMENSION	KK		7-67

NUMBER	REQUIRED PER ASSEMBLY	DESCRIPTION

© 1967 BY TE INCORPORATED. ALL RIGHTS RESERVED.  
TE PRODUCTS COVERED BY PATENTS AND/OR PATENTS PENDING.

CUSTOMER COPY REFERENCE ONLY

DR 1-6-67 Kuhlmann

CHK

DE

MATERIAL AND FINISH

TE Connectivity

CLASS

WIRE - RANGE - INSULATION

TYPE

TOLERANCE EXCEPT AS NOTED ± .015 ± 1° 0'

SCALE 4:1

LOC A1

NO B

NO 925058

REV C2

NAME ISOLIERTÜLLE FÜR 250 SERIE FASTON

TOLERANZ ± 0,2 mm

DIMENSIONS IN INCHES. DO NOT SCALE PRINT.

PRINT DIST