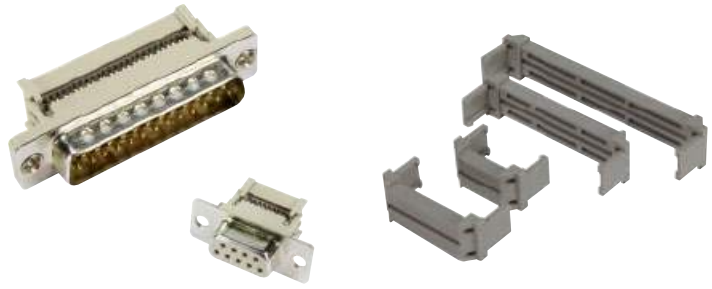


Number of contacts

9–37



Insulation displacement termination

Identification	No. of contacts	Part number	
Performance levels Explanations see page 05.04 Other performance levels on request		Performance level 3	Performance level 2
Male connector²⁾ pitch 1.27 mm metal shell with dimples	9	09 66 128 770 .	09 66 128 670 .
	15	09 66 228 770 .	09 66 228 670 .
Female connector pitch 1.27 mm metal shell	25	09 66 328 770 .	09 66 328 670 .
	37	09 66 428 770 .	09 66 428 670 .
Please insert digit for flange thread ø 3.1 mm hole ▶ 0 M3 ▶ 1 ¹⁾ 4-40 UNC ▶ 2			
Strain relief clamp plastic for male and female connector	9	09 66 108 0001	09 66 108 0001
	15	09 66 208 0001	09 66 208 0001
	25	09 66 308 0001	09 66 308 0001
	37	09 66 408 0001	09 66 408 0001

1) Not normally kept in stock
 2) Not released for halogen free flat cables