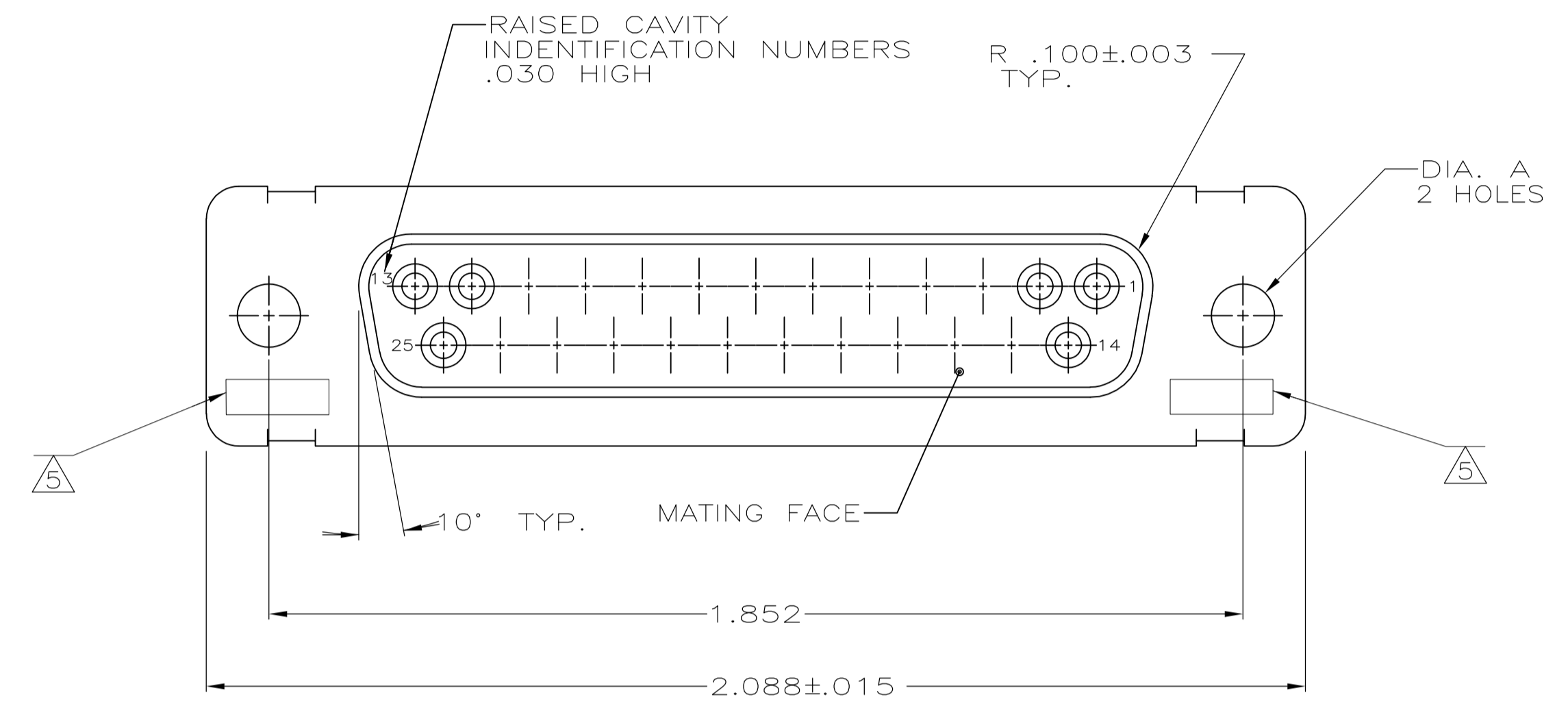
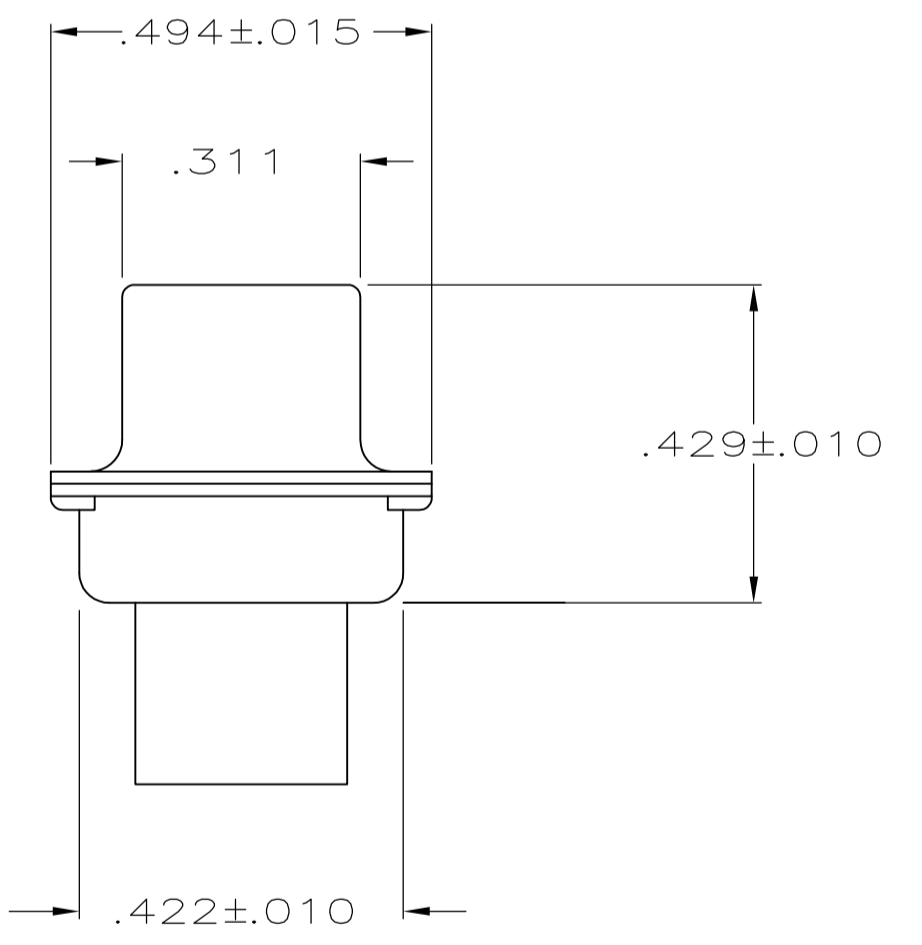
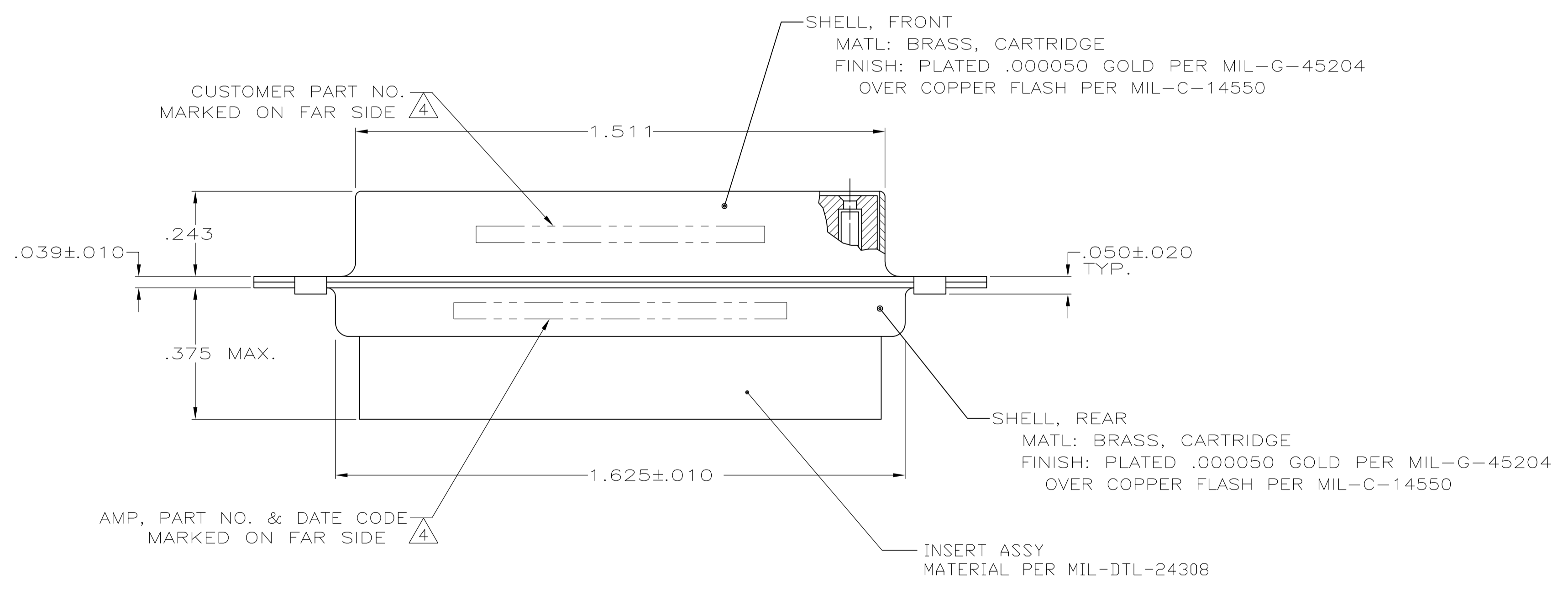


| LOC |     | DIST                  |         | REVISIONS |      |  |  |
|-----|-----|-----------------------|---------|-----------|------|--|--|
| P   | LTR | DESCRIPTION           | DATE    | DMN       | APVD |  |  |
| R   |     | REV PER ECO 15-016064 | 11-9-15 | CT        | CD   |  |  |



1. THIS RECEPTACLE WILL MATE WITH ANY PLUG CONNECTOR WITH THE SAME INSERT ARRANGEMENT AS DEFINED BY MS18275-1.
  2. MAXIMUM WIRE INSULATION USED WITH THIS RCPT. IS .072 DIA. MAX.
  3. Be-Cu RETENTION CLIPS ARE INCLUDED IN INSERTS.
- ⚠️ 4. FAR SIDE REFERS TO WIDE SIDE OF KEYSTONE.
  - ⚠️ 5. UL/CSA DESIGNATION STAMPED IN THIS AREA, OPTIONAL
  - ⚠️ 6. THESE CONNECTORS ARE QUALIFIED TO GODDARD SPACE FLIGHT CENTER SPECIFICATION S-311-P-4.
  - ⚠️ 7. CONNECTOR SUPPLIED WITH CONTACTS, AMP PART NUMBER 206793-1; (NOT INSTALLED).



|          |       |                   |                  |          |
|----------|-------|-------------------|------------------|----------|
| OBSOLETE | ⚠️    | .120              | LMSC 1621480-003 | 206801-8 |
|          |       | .120              | LMSC 1621480-003 | 206801-7 |
|          |       | .120              | 2A014-008V-001   | 206801-4 |
|          |       | .154              |                  | 206801-3 |
|          | ⚠️    | .120              | 311P409-3S-B-12  | 206801-2 |
|          | .154  | 311P409-3S-B-15   | 206801-1         |          |
| REMARKS  | DIA A | MARK CUSTOMER P/N |                  | AMP P/N  |

THIS DRAWING IS A CONTROLLED DOCUMENT.

DIMENSIONS: INCHES  
 TOLERANCES UNLESS OTHERWISE SPECIFIED:  
 0. PLC ± -  
 1. PLC ± -  
 2. PLC ± -  
 3. PLC ± .005  
 4. PLC ANGLES ± -

MATERIAL: SEE CALLOUTS  
 FINISH: SEE CALLOUTS  
 WEIGHT: -  
 CUSTOMER DRAWING

DIN M. CLOUSER 1-3-89  
 CHK T. CANTLIN 1-24-89  
 APVD: -  
 NAME: -  
 PRODUCT SPEC: -  
 APPLICATION SPEC: -  
 SIZE: A1  
 CAGE CODE: 00779  
 DRAWING NO: 206801  
 RESTRICTED TO: -  
 SCALE: 4:1  
 SHEET: 1 OF 1  
 REV: R

**STE** TE Connectivity  
 RECEPTACLE FOR SOCKET CONTACTS,  
 SIZE #3, 25 POS. (NON-MAGNETIC)