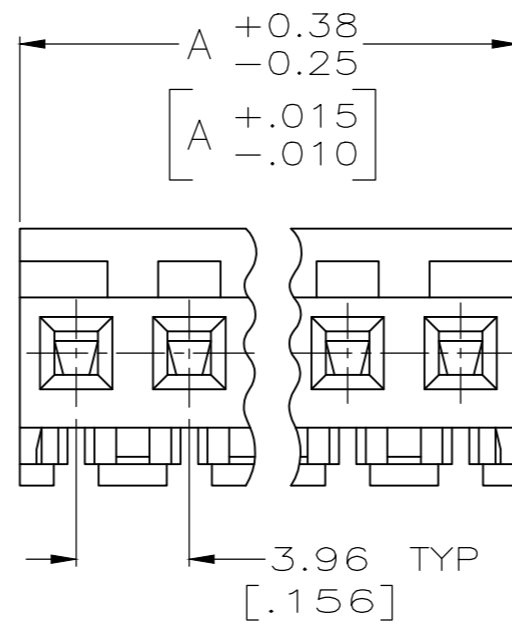
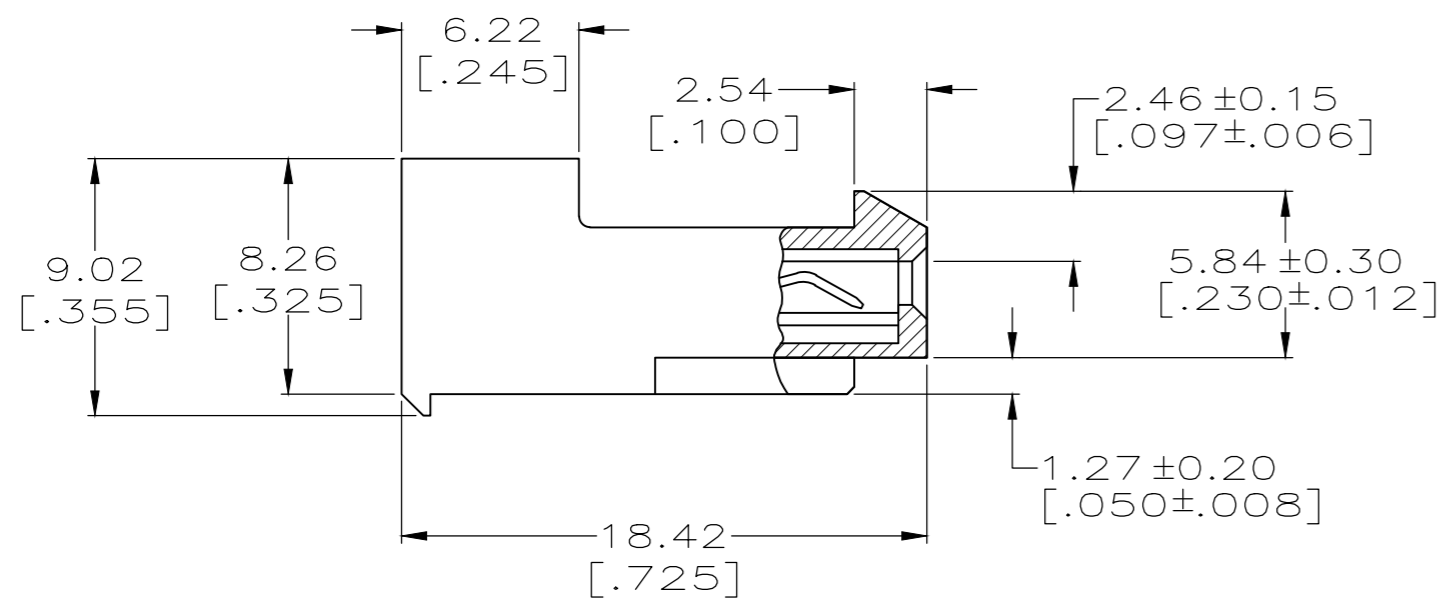
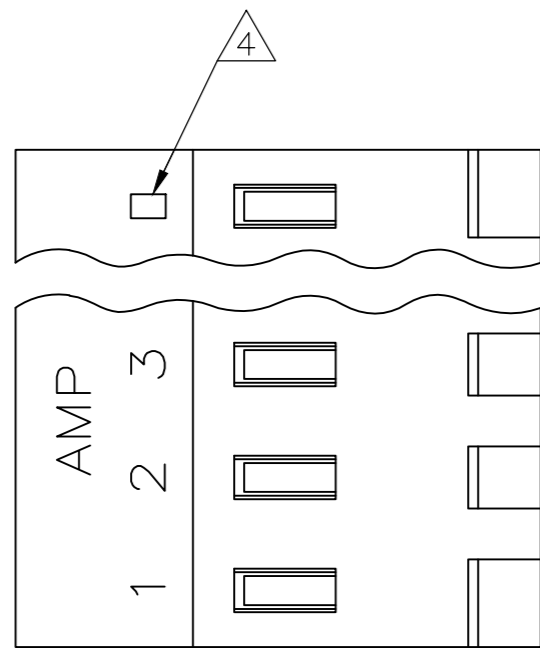


THIS DRAWING IS UNPUBLISHED. RELEASED FOR PUBLICATION
 © COPYRIGHT - By - TE CONNECTIVITY ALL RIGHTS RESERVED.

LOC	DIST	REVISIONS			
P	LTR	DESCRIPTION	DATE	DWN	APVD
CM	00	W	REVISED PER ECR-20-000814	26MAY2020	PC SW



1 MATERIAL: CONNECTOR - NYLON UL94V-2 (ORANGE).
 CONTACTS - 0.00076[.000030] GOLD THK OR 0.00008[.000003] MIN THK GOLD FLASH OVER 0.00068[.000027] THK PALLADIUM NICKEL, PER TE CONNECTIVITY'S DISCRETION, IN CONTACT AREA WITH MATTE TIN FOR -2 THRU -28, MATTE WHISKER MITIGATED TIN FOR 3-641217-2 THRU 5-641217-4 OVER NICKEL UNDERPLATE.

2 CONTACTS ACCEPT 18 AWG WIRE WITH 2.41[.095] MAX INSULATION DIAMETER.

3 CONTACTS MUST ACCEPT 1.14±0.03[.045±.001] SQUARE POST AND REMAIN LOCKED IN POSITION.

4 IDENTIFICATION NUMBER FOR LAST CIRCUIT MAY NOT APPEAR ON ALL ASSEMBLIES.

5 DIMENSIONS IN BRACKETS ARE IN INCHES.

6 HOUSING FEATURES ARE: CLOSED END WITH LOCKING RAMP.

7 OBSOLETE PARTS: OBSOLETE CIS STREAMLINING PER D.RENAUD/D.SINISI

YES	95.10[3.744]	24	5-641217-4
YES	91.13[3.588]	23	5-641217-3
YES	87.17[3.432]	22	5-641217-2
YES	83.21[3.276]	21	5-641217-1
YES	79.25[3.120]	20	5-641217-0
YES	75.29[2.964]	19	4-641217-9
YES	71.32[2.808]	18	4-641217-8
YES	67.36[2.652]	17	4-641217-7
YES	63.40[2.496]	16	4-641217-6
YES	59.44[2.340]	15	4-641217-5
YES	55.47[2.184]	14	4-641217-4
YES	51.51[2.028]	13	4-641217-3
YES	47.55[1.872]	12	4-641217-2
YES	43.59[1.716]	11	4-641217-1
YES	39.62[1.560]	10	4-641217-0
YES	35.66[1.404]	9	3-641217-9
YES	31.70[1.248]	8	3-641217-8
YES	27.74[1.092]	7	3-641217-7
YES	23.77[.936]	6	3-641217-6
YES	19.81[.780]	5	3-641217-5
YES	15.85[.624]	4	3-641217-4
YES	11.89[.468]	3	3-641217-3
YES	7.92[.312]	2	3-641217-2
NO	95.10[3.744]	24	2-641217-4
NO	91.13[3.588]	23	2-641217-3
NO	87.17[3.432]	22	2-641217-2
NO	83.21[3.276]	21	2-641217-1
NO	79.25[3.120]	20	2-641217-0
NO	75.29[2.964]	19	1-641217-9
NO	71.32[2.808]	18	1-641217-8
NO	67.36[2.652]	17	1-641217-7
NO	63.40[2.496]	16	1-641217-6
NO	59.44[2.340]	15	1-641217-5
NO	55.47[2.184]	14	1-641217-4
NO	51.51[2.028]	13	1-641217-3
NO	47.55[1.872]	12	1-641217-2
NO	43.59[1.716]	11	1-641217-1
NO	39.62[1.560]	10	1-641217-0
NO	35.66[1.404]	9	641217-9
NO	31.70[1.248]	8	641217-8
NO	27.74[1.092]	7	641217-7
NO	23.77[.936]	6	641217-6
NO	19.81[.780]	5	641217-5
NO	15.85[.624]	4	641217-4
NO	11.89[.468]	3	641217-3
NO	7.92[.312]	2	641217-2
LEADFREE	DIM A	NO. OF CIRCUITS	PART NO.

7	SUPERCEDED BY 5-641217-4	NO	95.10[3.744]	24	2-641217-4
7	SUPERCEDED BY 5-641217-3	NO	91.13[3.588]	23	2-641217-3
7	SUPERCEDED BY 5-641217-2	NO	87.17[3.432]	22	2-641217-2
7	SUPERCEDED BY 5-641217-1	NO	83.21[3.276]	21	2-641217-1
7	SUPERCEDED BY 5-641217-0	NO	79.25[3.120]	20	2-641217-0
7	SUPERCEDED BY 4-641217-9	NO	75.29[2.964]	19	1-641217-9
7	SUPERCEDED BY 4-641217-8	NO	71.32[2.808]	18	1-641217-8
7	SUPERCEDED BY 4-641217-7	NO	67.36[2.652]	17	1-641217-7
7	SUPERCEDED BY 4-641217-6	NO	63.40[2.496]	16	1-641217-6
7	SUPERCEDED BY 4-641217-5	NO	59.44[2.340]	15	1-641217-5

THIS DRAWING IS A CONTROLLED DOCUMENT.		DWN K. WHITAKER 15MAR2004		
DIMENSIONS: mm [INCHES]		CHK D. BOSSI 15-MAR-04		
TOLERANCES UNLESS OTHERWISE SPECIFIED:		APVD D. BOSSI 15-MAR-04	NAME	
0 PLC ± - 1 PLC ± - 2 PLC ± 0.13 [.005] 3 PLC ± - 4 PLC ± - ANGLES ± 0°30'		PRODUCT SPEC 108-1051	MTA-156 CONNECTOR ASSEMBLY, 18 AWG STANDARD	
MATERIAL		APPLICATION SPEC 114-1020	SIZE A2	CAGE CODE 00779
FINISH		WEIGHT -	DRAWING NO C=641217	RESTRICTED TO -
1		CUSTOMER DRAWING		SCALE 1:1
		SHEET 1 of 1		REV W