

PART NUMBER  
GS SERIES CHART 6

REVISION HISTORY					
REV	DOCUMENT	DESCRIPTION	CHG'D BY	DATE	APPROVED
A	0099785	INITIAL RELEASE	RH	2013-04-12	M. MARK

# GSA

SEE CONDUIT  
THREAD CHART

SEE BASIC SWITCH  
CODE CHART

SEE OPERATING HEAD  
CODE CHART

SEE ROLLER MATERIAL  
CODE CHART

SEE ROLLER ORIENTATION  
CODE CHART

SEE MODIFICATION  
CODE CHART

CONDUIT THREAD CHART	
CODE	DESCRIPTION
A	1/2-14 NPT CONDUIT THREAD
B	PG 13.5 CONDUIT THREAD
C	M20 X 1.5 CONDUIT THREAD
D	PF 1/2 CONDUIT THREAD

BASIC SWITCH CODE CHART	
CODE	DESCRIPTION
01	S.P.D.T.-SNAP ACTION
03	S.P.D.T.-BREAK BEFORE MAKE
04	S.P.D.T.-MAKE BEFORE BREAK
06	S.P.D.T.-SLOW ACTION-2 NORMALLY CLOSED
07	S.P.D.T.-SNAP ACTION-GOLD
20	D.P.D.T.-SNAP ACTION
21	D.P.S.T.-SNAP ACTION-SEQUENTIAL
22	D.P.D.T.-SNAP ACTION-GOLD
28	D.P.S.T.-SNAP ACTION-SEQUENTIAL-GOLD
33	S.P.D.T.-BREAK BEFORE MAKE-GOLD
34	S.P.D.T.-MAKE BEFORE BREAK-GOLD
36	S.P.D.T.-SLOW ACTION-2 NORMALLY CLOSED-GOLD
40	4 NORMALLY CLOSED-SLOW ACTION
41	4 NORMALLY CLOSED-SLOW ACTION-GOLD
42	2 NORMALLY CLOSED / 1 NORMALLY OPEN-BREAK BEFORE MAKE-SLOW ACTION
43	2 NORMALLY CLOSED / 1 NORMALLY OPEN-BREAK BEFORE MAKE-SLOW ACTION-GOLD
44	2 NORMALLY CLOSED / 2 NORMALLY OPEN-BREAK BEFORE MAKE-SLOW ACTION
45	2 NORMALLY CLOSED / 2 NORMALLY OPEN-BREAK BEFORE MAKE-SLOW ACTION-GOLD
46	3 NORMALLY CLOSED / 1 NORMALLY OPEN-BREAK BEFORE MAKE-SLOW ACTION
47	3 NORMALLY CLOSED / 1 NORMALLY OPEN-BREAK BEFORE MAKE-SLOW ACTION-GOLD

OPERATING HEAD CODE CHART	
CODE	DESCRIPTION
A1	SIDE ROTARY, FIXED LENGTH LEVER
A5	SIDE ROTARY, OFFSET LEVER
B	TOP PIN PLUNGER
C	TOP ROLLER PLUNGER
D	TOP ROLLER LEVER
R	TOP ROLLER BALL

ROLLER MATERIAL CODE CHART	
CODE	DESCRIPTION
NONE	NO ROLLER
A	PLASTIC ROLLER
B	METAL ROLLER

ROLLER ORIENTATION CODE CHART	
CODE	DESCRIPTION
BLANK	BLANK = STANDARD ORIENTATION-ROLLER PARALLEL TO MOUNTING SURFACE, SWITCHING IN BOTH DIRECTIONS
1	SWITCHING CLOCKWISE ROTATION ONLY
2	SWITCHING COUNTER CLOCKWISE ROTATION ONLY
3	LEVER ON RIGHT
4	LEVER ON LEFT
5	LEVER TO MOUNTING SURFACE
6	HEAD ORIENTED WITH ROLLER PERPENDICULAR TO MOUNTING SURFACE

MODIFICATION CODE CHART	
CODE	DESCRIPTION
C02	PRE-LEADED CABLE, 5 CONDUCTORS WITH GROUND. LAST CHARACTER IS CABLE LENGTH IN METERS. CABLE LENGTHS AVAILABLE IN 1 TO 9 METERS
Q01	CONNECTOR, 4 PIN MICRO-CHANGE
Q02	CONNECTOR, 5 PIN M12
Q03	CONNECTOR, 4 PIN MINI-CHANGE
Q04	CONNECTOR, 5 PIN MINI-CHANGE

NOTES:

- RED EPOXY PAINT FINISHED ZINC DIE-CAST BODY AND STEEL COVER.  
BLACK EPOXY PAINT FINISHED ZINC DIE-CAST HEAD.
- FREE POSITION (F.P.), OPERATING POINT, OVERTRAVEL (O.T.) AND PRE TRAVEL ALL TO EN50041.
- ANY STANDARD LISTING WITH SUFFIX "RS" OR "FE" IS PERMITTED.
- LEVERS MAY BE ATTACHED TO THE SHAFT AT 90° INCREMENTS. THEY MAY ALSO BE ATTACHED, BUT NOT KEYPED, ANYWHERE ON THE SHAFT FOR OPERATING HEAD CODES A1 AND A5
- DIMENSIONS ARE SHOWN AS MILLIMETERS OVER INCHES. INCH VALUES ARE SHOWN FOR REFERENCE ONLY.

TEMPERATURE RANGE:

(ALL PRODUCT EXCEPT WITH SIDE ROTARY OPERATING HEAD)  
OPERATING: -25°C TO +85°C / -13°F TO +185°F  
STORAGE: -40°C TO +85°C / -40°F TO +185°F  
(PRODUCTS WITH SIDE ROTARY OPERATING HEAD)  
OPERATING: -40°C TO +85°C / -40°F TO +185°F  
STORAGE: -40°C TO +85°C / -40°F TO +185°F

IEC 947-5-1 ELECTRICAL RATING				ENVIRONMENTAL		APPROVALS	
SILVER CONTACTS			GOLD PLATED CONTACTS		IP67 NEMA 1, 4, 12, 13		UL CE
AC	AC (FOR 2 NC)	DC	1th = 10A		TEMP RANGE:		
A600 AC15 Ue Ie	A300 AC15 Ue Ie	Q300 DC13 Ue Ie	IV 10µA MIN		STORAGE:		
VOLTS AMPS 120 6 240 3	VOLTS AMPS 120 6 240 3	VOLTS AMPS 24 2.8 125 0.55 250 0.27	50V 100mA MAX		SHOCK : 50G PER IEC 68-2-27 VIBRATION : 10G PER IEC 68-2-6		
380 1.9 480 1.5 500 1.4 600 1.2					IEC 60947-5-1 EN50041		

UNLESS OTHERWISE SPECIFIED	THIRD ANGLE PROJECTION
DIMENSIONS ARE IN MM	
DECIMAL TOL	
NO PLACE ... ±0.5	
1 PLACE ... ±0.3	
2 PLACE ... ±0.15	
3 PLACE ... ±0.05	
ANGULAR TOL - ±° CHAMFER - ±°	
MATERIAL	
FINISH	
APPLICABLE DOCUMENTS: ASME Y14.100-2004 ASME Y14.5-2009	
COMPUTER GENERATED DRAWING: PRO/ENGINEER	

Honeywell					
SWITCH LIMIT					
SIZE	CAGE CODE	DWG NO	TYPE	REV	
A1	91929	GS SERIES CHART 1	I	A	
SCALE: NONE		REF WT:		SHEET 1 of 7	
RELEASE DATE: 2013-04-12		DRW: H. RAVIKIRAN		2013-02-28	
RDE: M. MARK		DA: -		2013-02-28	
CHK: M. MARK		2013-02-28			
<p><b>HONEYWELL CONFIDENTIAL</b> THIS DOCUMENT CONTAINS PROPRIETARY INFORMATION AND SUCH INFORMATION MAY NOT BE DISCLOSED TO OTHERS FOR ANY PURPOSE, NOR USED FOR MANUFACTURING FROM HONEYWELL</p>					

BASIC SWITCH CODE	CONTACT BLOCK DIAGRAM
01 07	SNAP ACTION SINGLE POLE 
03 33	SLOW ACTION BREAK BEFORE MAKE 
04 34	SLOW ACTION MAKE BEFORE BREAK 
06 36	SLOW ACTION 2 NORMALLY CLOSED 
20 22	SNAP ACTION DOUBLE POLE 
21 28	SNAP ACTION DOUBLE POLE STEP 1 STEP 2 

CAM ACTUATION PER EN50041		OPERATING FORCE MAX	DISCONNECT FORCE MAX
NOMINAL TRAVELS AND RELATED TERMINALS		N	N
DIFFERENTIAL TRAVEL, ** POSITIVE OPENING TO IEC 947-5-1		lbs	lbs
DIMENSIONS IN mm			
→		9.7 / 2.2	11.4 / 2.6
→		9.7 / 2.2	11.4 / 2.6
→		9.7 / 2.2	11.4 / 2.6
→		9.7 / 2.2	11.4 / 2.6
→		9.7 / 2.2	11.8 / 2.7
→		9.7 / 2.2	N/A

ANGULAR ACTUATION		OPERATING TORQUE MAX	DISCONNECT TORQUE MAX
NOMINAL TRAVELS AND RELATED TERMINALS		Nmm	Nmm
DIFFERENTIAL TRAVEL, ** POSITIVE OPENING TO IEC 947-5-1		in. lbs	in. lbs
DIMENSIONS IN mm			
→		.330 / 2.9	.385 / 3.4
→		.330 / 2.9	.385 / 3.4
→		.330 / 2.9	.385 / 3.4
→		.330 / 2.9	.385 / 3.4
→		.330 / 2.9	.400 / 3.5
→		.330 / 2.9	N/A

40 41	SLOW ACTION 4 NORMALLY CLOSED 
42 43	SLOW ACTION 2 NORMALLY CLOSED / 1 NORMALLY OPEN BREAK BEFORE MAKE 
44 45	SLOW ACTION 2 NORMALLY CLOSED / 2 NORMALLY OPEN BREAK BEFORE MAKE 
46 47	SLOW ACTION 3 NORMALLY CLOSED / 1 NORMALLY OPEN BREAK BEFORE MAKE 

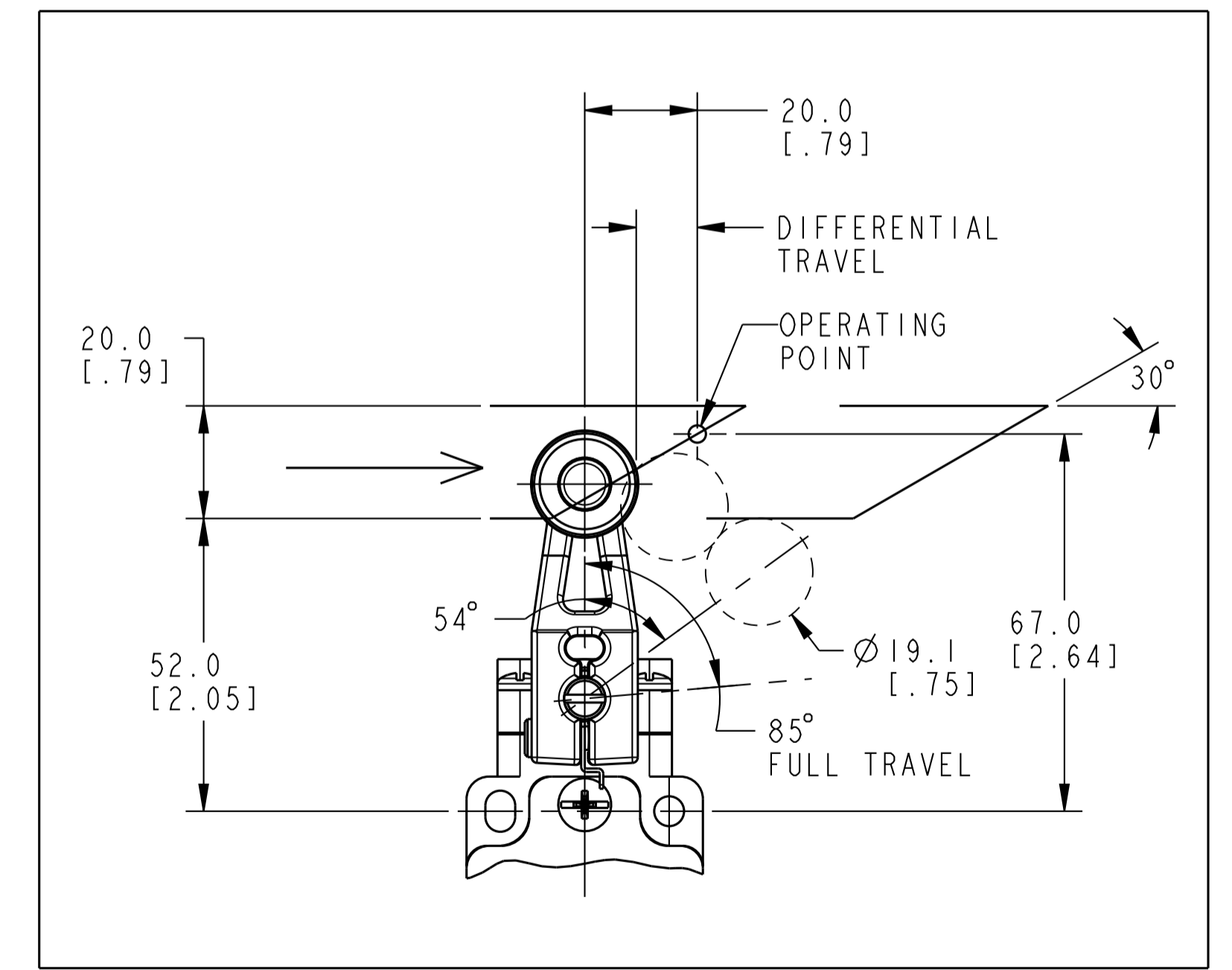
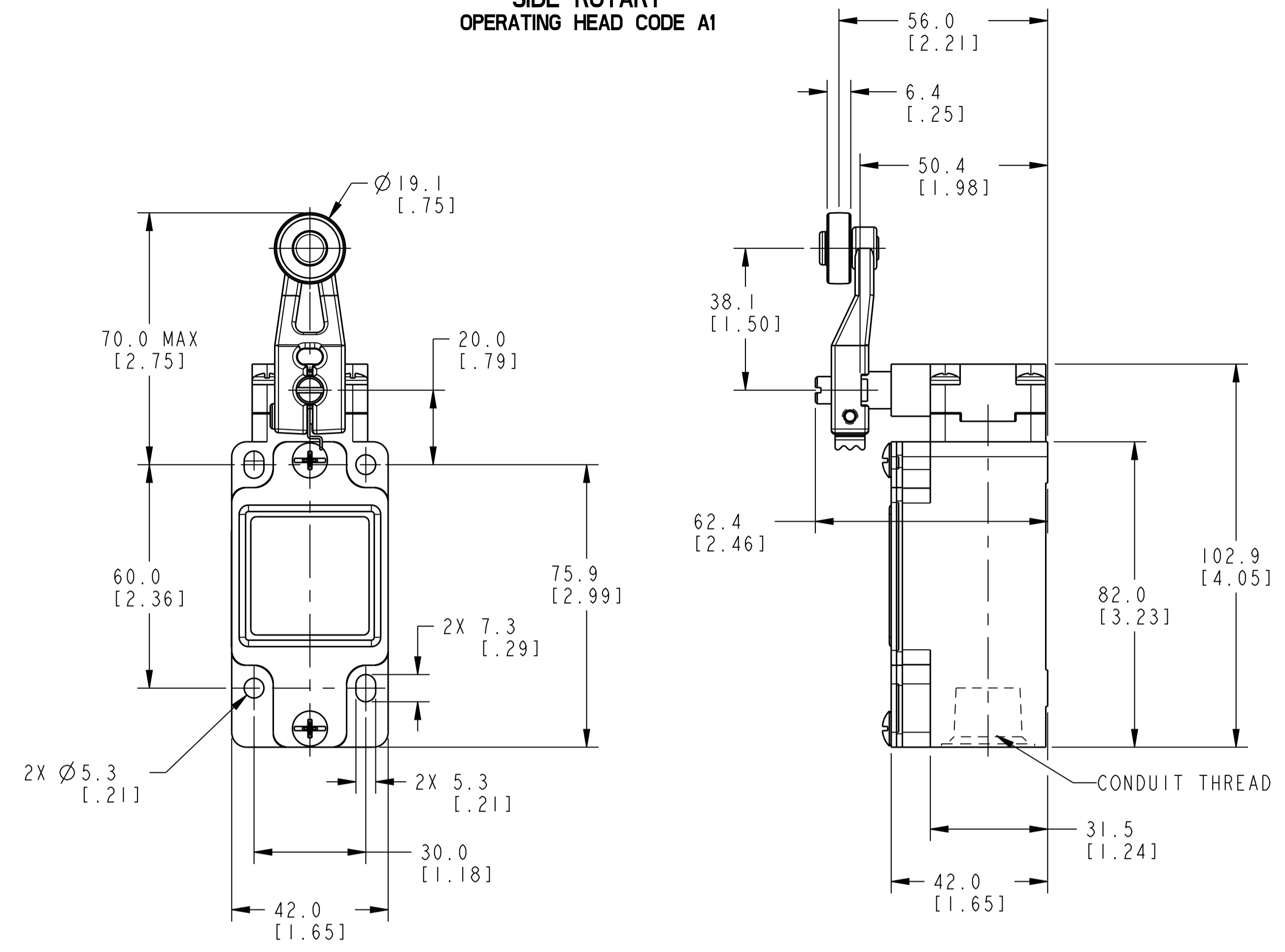
→		9.7 / 2.2	11.4 / 2.6
→		9.7 / 2.2	11.4 / 2.6
→		9.7 / 2.2	11.4 / 2.6
→		9.7 / 2.2	11.4 / 2.6

→		.330 / 2.9	.385 / 3.4
→		.330 / 2.9	.385 / 3.4
→		.330 / 2.9	.385 / 3.4
→		.330 / 2.9	.385 / 3.4

MIN. OPERATING VELOCITY = 8.5mm/S (0.33in/S)  
MAX. OPERATING VELOCITY = 0.85M/S (33.5in/S)  
MAX. OPERATING FREQUENCY = 250 OPS/MINUTE

MIN. OPERATING ACTUATION = 13°/SECOND  
MAX. OPERATING ACTUATION = 1290°/SECOND  
MAX. OPERATING FREQUENCY = 250 OPS/MINUTE

**SIDE ROTARY OPERATING HEAD CODE AI**



<b>Honeywell</b>				
TITLE <b>SWITCH LIMIT</b>				
SIZE <b>AI</b>	CAGE CODE <b>91929</b>	DWG NO <b>GS SERIES CHART 1</b>	TYPE <b>I</b>	REV <b>A</b>
SCALE 1:1		REF WT:		SHEET 2 of 7

PART NUMBER  
GS SERIES CHART 6

BASIC SWITCH CODE	CONTACT BLOCK DIAGRAM
01 07	SNAP ACTION SINGLE POLE 
03 33	SLOW ACTION BREAK BEFORE MAKE 
04 34	SLOW ACTION MAKE BEFORE BREAK 
06 36	SLOW ACTION 2 NORMALLY CLOSED 
20 22	SNAP ACTION DOUBLE POLE 
21 28	SNAP ACTION DOUBLE POLE STEP 1 STEP 2 

CAM ACTUATION PER EN50041		OPERATING FORCE MAX	DISCONNECT FORCE MAX
NOMINAL TRAVELS AND RELATED TERMINALS		N	N
-CONTACT CLOSED -CONTACT OPEN -CONTACT CLOSED		lbs	lbs
DIFFERENTIAL TRAVEL, ** POSITIVE OPENING TO IEC 947-5-1 DIMENSIONS IN mm			
→		9.7 / 2.2	11.4 / 2.6
→		9.7 / 2.2	11.4 / 2.6
→		9.7 / 2.2	11.4 / 2.6
→		9.7 / 2.2	11.4 / 2.6
→		9.7 / 2.2	11.8 / 2.7
→		9.7 / 2.2	N/A

ANGULAR ACTUATION		OPERATING TORQUE MAX	DISCONNECT TORQUE MAX
NOMINAL TRAVELS AND RELATED TERMINALS		Nmm	Nmm
-CONTACT CLOSED -CONTACT OPEN -CONTACT CLOSED		in. lbs	in. lbs
DIFFERENTIAL TRAVEL, ** POSITIVE OPENING TO IEC 947-5-1 DIMENSIONS IN mm			
→		.330 / 2.9	.385 / 3.4
→		.330 / 2.9	.385 / 3.4
→		.330 / 2.9	.385 / 3.4
→		.330 / 2.9	.385 / 3.4
→		.330 / 2.9	.400 / 3.5
→		.330 / 2.9	N/A

40 41	SLOW ACTION 4 NORMALLY CLOSED 
42 43	SLOW ACTION 2 NORMALLY CLOSED / 1 NORMALLY OPEN BREAK BEFORE MAKE 
44 45	SLOW ACTION 2 NORMALLY CLOSED / 2 NORMALLY OPEN BREAK BEFORE MAKE 
46 47	SLOW ACTION 3 NORMALLY CLOSED / 1 NORMALLY OPEN BREAK BEFORE MAKE 

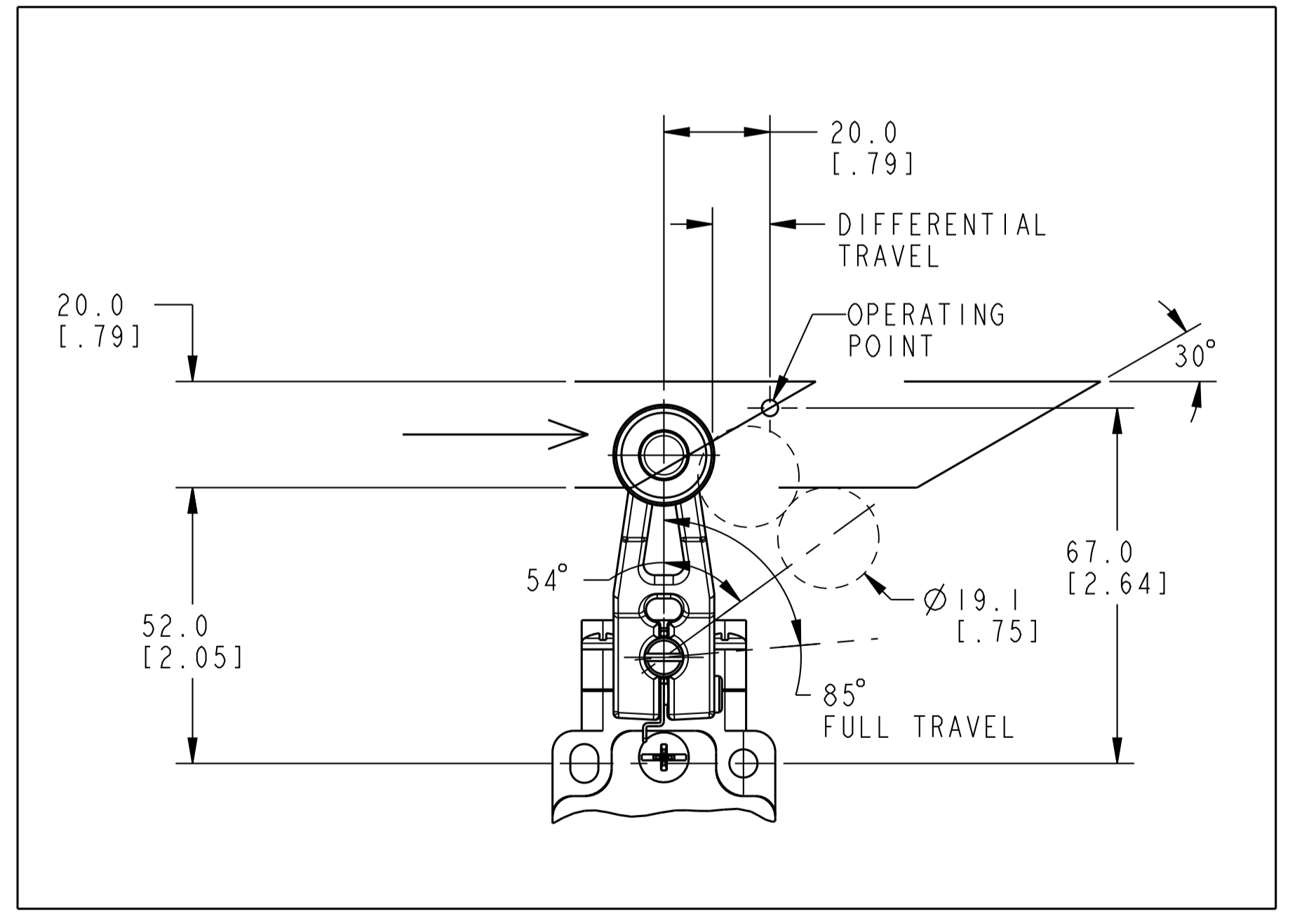
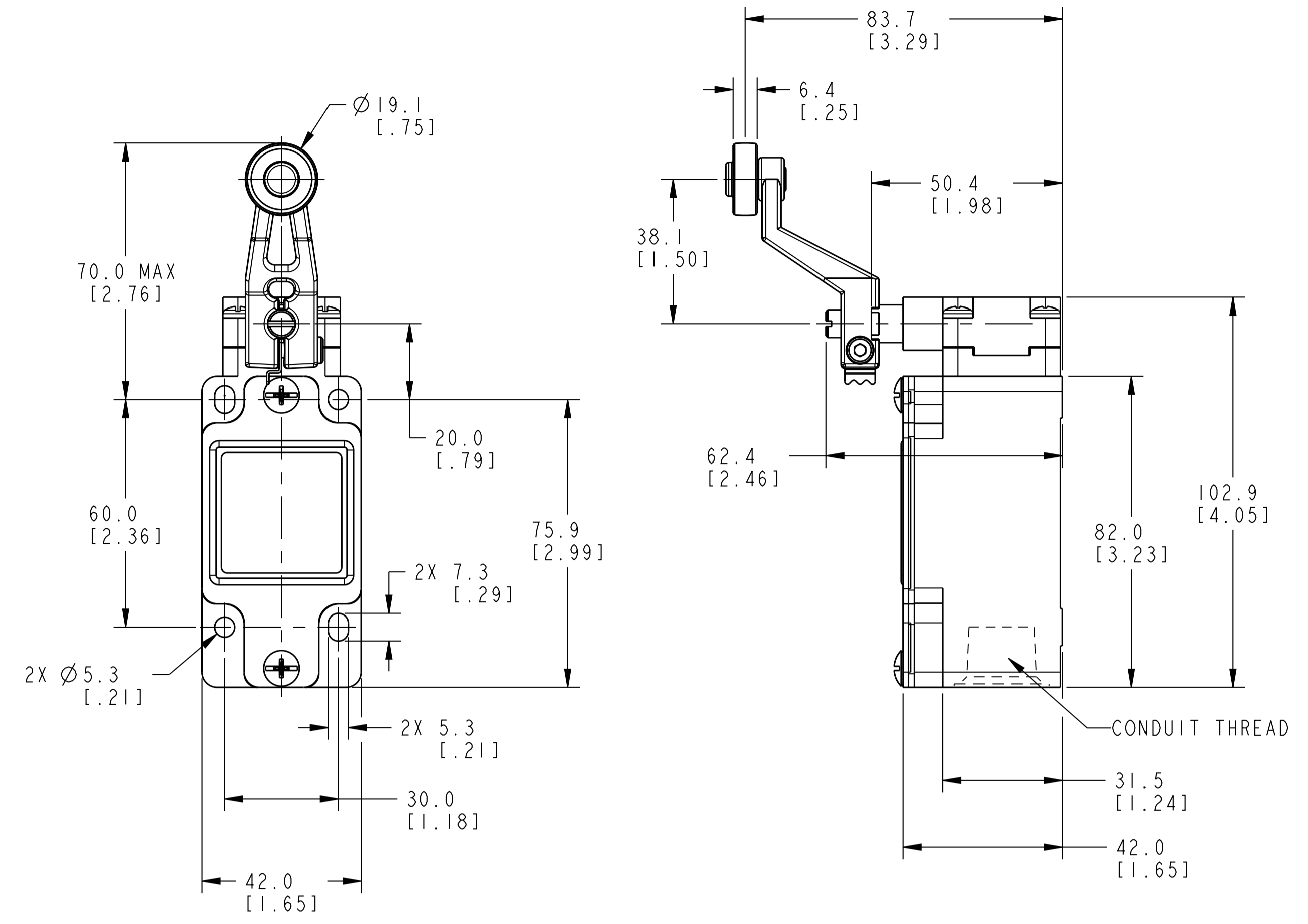
→		9.7 / 2.2	11.4 / 2.6
→		9.7 / 2.2	11.4 / 2.6
→		9.7 / 2.2	11.4 / 2.6
→		9.7 / 2.2	11.4 / 2.6

→		.330 / 2.9	.385 / 3.4
→		.330 / 2.9	.385 / 3.4
→		.330 / 2.9	.385 / 3.4
→		.330 / 2.9	.385 / 3.4

MIN. OPERATING VELOCITY = 8.5mm/S (0.33in/S)  
MAX. OPERATING VELOCITY = 0.85M/S (33.5in/S)  
MAX. OPERATING FREQUENCY = 250 OPS/MINUTE

MIN. OPERATING ACTUATION = 13°/SECOND  
MAX. OPERATING ACTUATION = 1290°/SECOND  
MAX. OPERATING FREQUENCY = 250 OPS/MINUTE

SIDE ROTARY OPERATING HEAD CODE A5



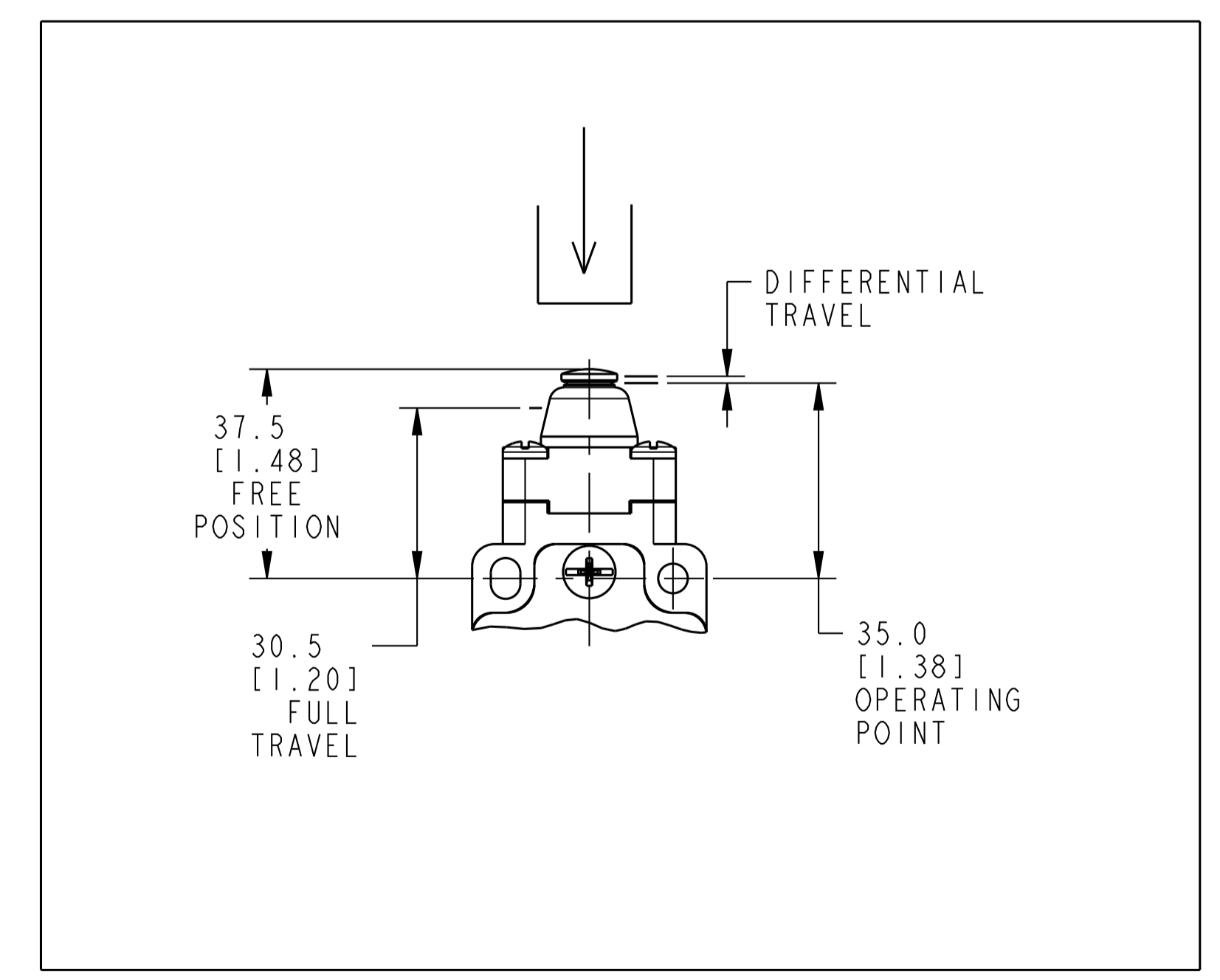
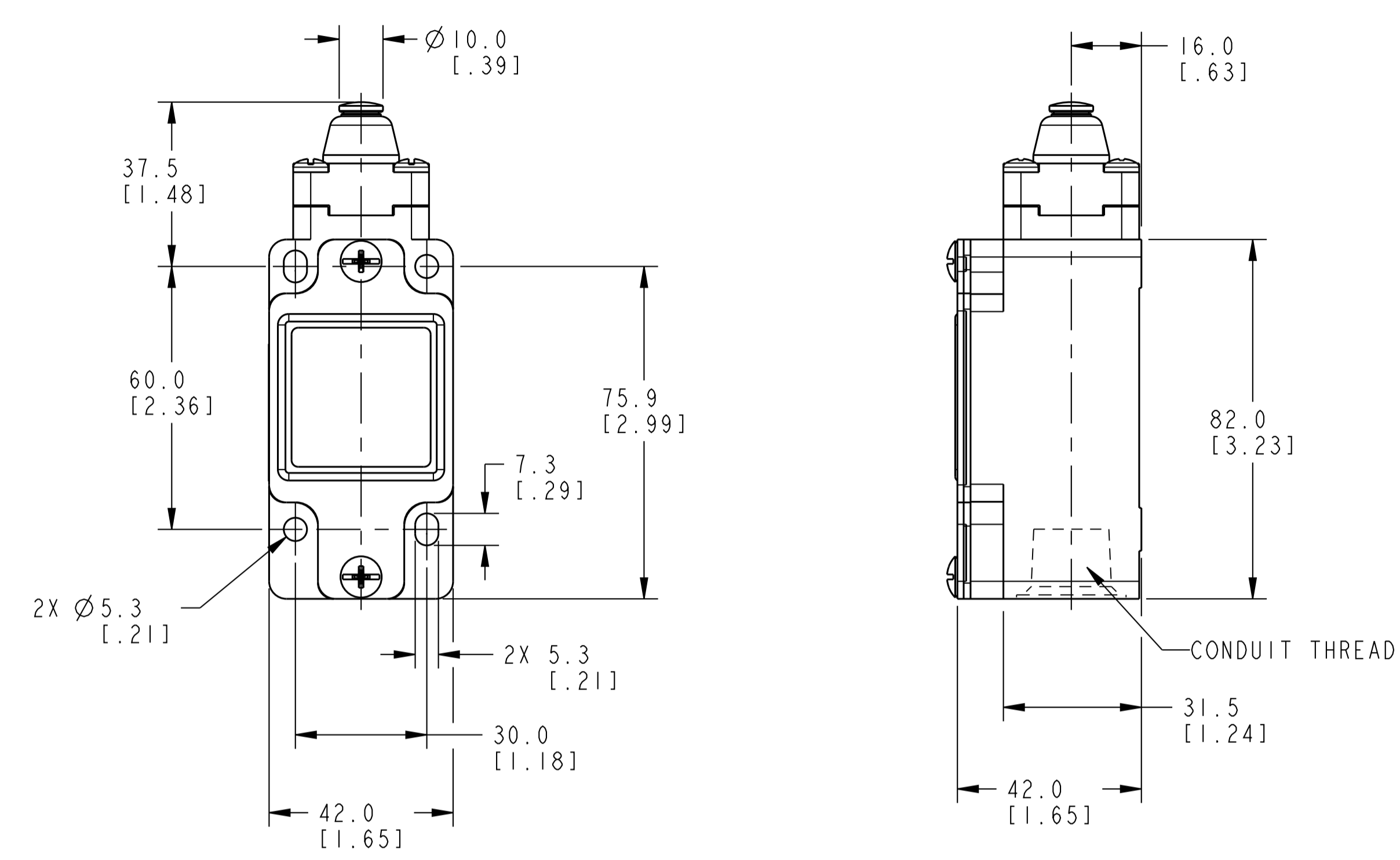
<b>Honeywell</b>				
TITLE <b>SWITCH LIMIT</b>				
SIZE <b>A1</b>	CAGE CODE <b>91929</b>	DWG NO <b>GS SERIES CHART 1</b>	TYPE <b>I</b>	REV <b>A</b>
SCALE 1:1	REF WT:	SHEET 3 of 7		

PART NUMBER  
GS SERIES CHART 6

BASIC SWITCH CODE	CONTACT BLOCK DIAGRAM	PIN ACTUATION	
		NOMINAL TRAVELS AND RELATED TERMINALS -CONTACT CLOSED -CONTACT OPEN -CONTACT CLOSED DIFFERENTIAL TRAVEL, ** POSITIVE OPENING TO IEC 947-5-1 DIMENSIONS IN mm	OPERATING FORCE MAX N / lbs DISCONNECT FORCE MAX N / lbs
01 07	SNAP ACTION SINGLE POLE 13-14, 21-22, Zb	37.5 FP, 35, 33**, 30.5 OT 21-22, 13-14 ← 0.9 DIFFERENTIAL TRAVEL	16 / 3.6, 27 / 6.0
03 33	SLOW ACTION BREAK BEFORE MAKE 21-22, 13-14, Zb	37.5 FP, 35, 33**, 30.5 OT 21-22, 13-14, 34	16 / 3.6, 27 / 6.0
04 34	SLOW ACTION MAKE BEFORE BREAK 21-22, 13-14, Zb	37.5 FP, 34, 32**, 30.5 OT 21-22, 13-14, 35	16 / 3.6, 27 / 6.0
06 36	SLOW ACTION 2 NORMALLY CLOSED 21-22, 11-12, 2Y	37.5 FP, 35, 33**, 30.5 OT 21-22, 11-12	16 / 3.6, 27 / 6.0
20 22	SNAP ACTION DOUBLE POLE 13-14, 11-12, 23-24, 21-22	37.5 FP, 35, 33**, 30.5 OT 11-12, 21-22, 13-14, 23-24 ← 0.9 DIFFERENTIAL TRAVEL	16 / 3.6, 37 / 8.2
21 28	SNAP ACTION DOUBLE POLE STEP 1, STEP 2, 13-14, 11-12, 23-24, 21-22	37.5 FP, 35, 33**, 30.5 OT 11-12, 13-14, 21-22, 23-24 ← 0.8 DIFFERENTIAL TRAVEL   33.8   31.8** ← 0.8 DIFFERENTIAL TRAVEL	16 / 3.6, 27 / 6.0
40 41	SLOW ACTION 4 NORMALLY CLOSED 11-12, 21-22, 31-32, 41-42, 4Y	37.5 FP, 35, 33**, 30.5 OT 11-12, 21-22, 31-32, 41-42	16 / 3.6, 27 / 6.0
42 43	SLOW ACTION 2 NORMALLY CLOSED / 1 NORMALLY OPEN BREAK BEFORE MAKE 11-12, 21-22, 33-34, Y, Zb	37.5 FP, 35, 33**, 30.5 OT 11-12, 21-22, 33-34, 34	16 / 3.6, 27 / 6.0
44 45	SLOW ACTION 2 NORMALLY CLOSED / 2 NORMALLY OPEN BREAK BEFORE MAKE 11-12, 21-22, 33-34, 43-44, 2Zb	37.5 FP, 35, 33**, 30.5 OT 11-12, 21-22, 33-34, 43-44, 34	16 / 3.6, 27 / 6.0
46 47	SLOW ACTION 3 NORMALLY CLOSED / 1 NORMALLY OPEN BREAK BEFORE MAKE 11-12, 21-22, 31-32, 43-44, 2Y, Zb	37.5 FP, 35, 33**, 30.5 OT 11-12, 21-22, 31-32, 43-44, 34	16 / 3.6, 27 / 6.0

MIN. OPERATING VELOCITY = 1.0mm/S (0.04in/S)  
 MAX. OPERATING VELOCITY = 0.1M/S (3.9in/S)  
 MAX. OPERATING FREQUENCY = 250 OPS/MINUTE

TOP PIN PLUNGER  
OPERATING HEAD CODE B



<b>Honeywell</b>				
TITLE <b>SWITCH LIMIT</b>				
SIZE <b>AI</b>	CAGE CODE <b>91929</b>	DWG NO <b>GS SERIES CHART 1</b>	TYPE <b>I</b>	REV <b>A</b>
SCALE 1:1	REF WT:	SHEET 4 of 7		

PART NUMBER  
GS SERIES CHART 6

BASIC SWITCH CODE	CONTACT BLOCK DIAGRAM
01 07	SNAP ACTION SINGLE POLE 
03 33	SLOW ACTION BREAK BEFORE MAKE 
04 34	SLOW ACTION MAKE BEFORE BREAK 
06 36	SLOW ACTION 2 NORMALLY CLOSED 
20 22	SNAP ACTION DOUBLE POLE 
21 28	SNAP ACTION DOUBLE POLE STEP 1 STEP 2 

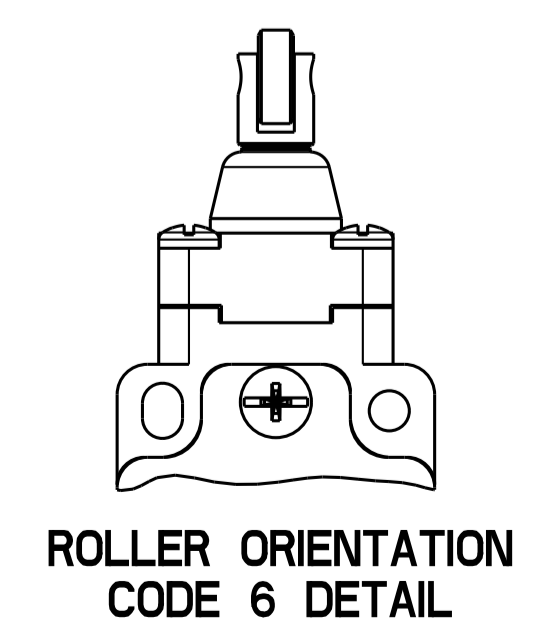
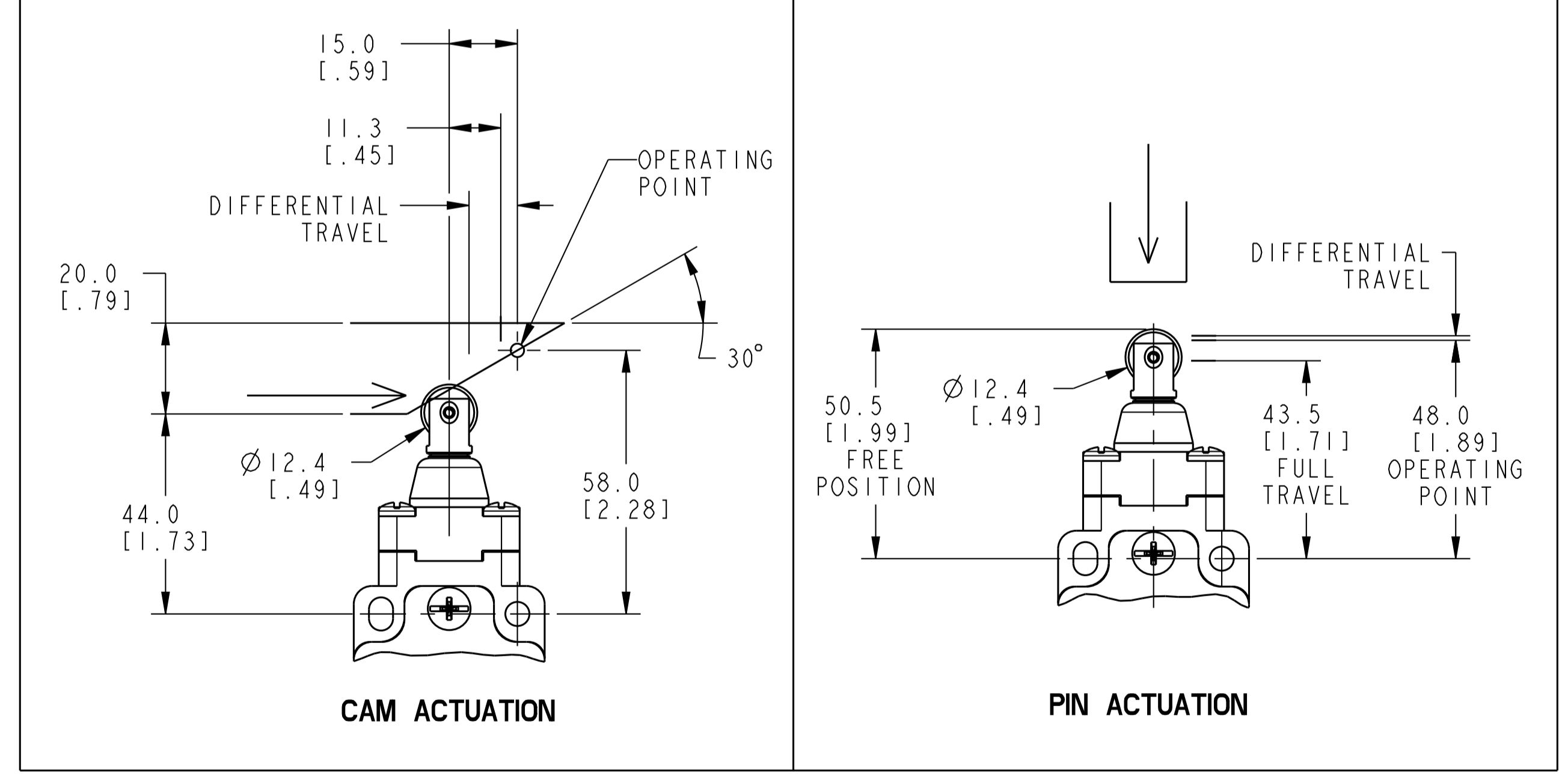
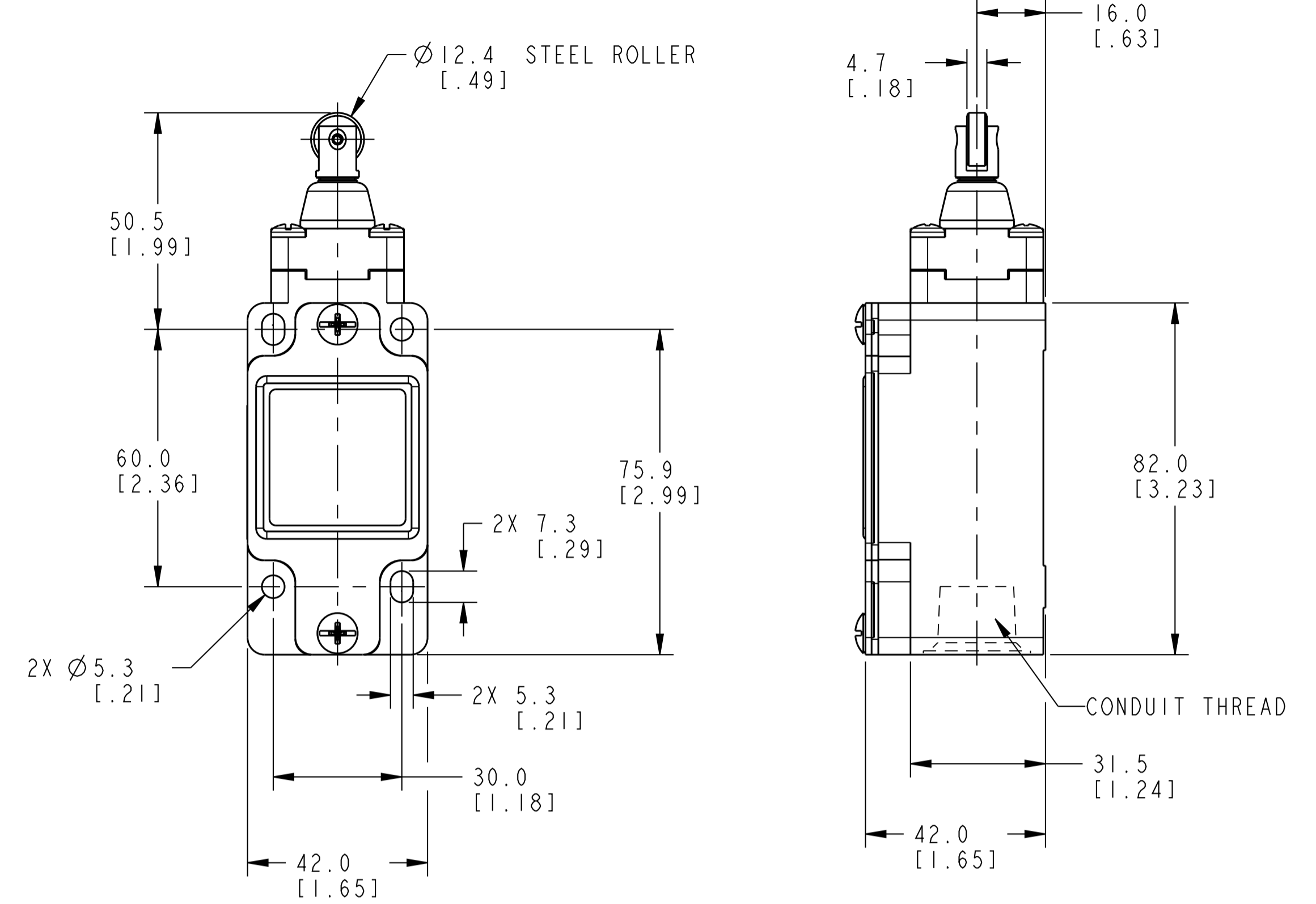
CAM ACTUATION PER EN50041		OPERATING FORCE MAX N	DISCONNECT FORCE MAX N
	→ 11.3 FP 15 18.3** ← 1.8 DIFFERENTIAL TRAVEL	9.3	15.6
	→ 11.3 FP 15 18.3** ← 16.8	9.3	15.6
	→ 11.3 FP 16.8 20.3** ← 15	9.3	15.6
	→ 11.3 FP 15 18.3**	9.3	15.6
	→ 11.3 FP 15 18.3** ← 1.8 DIFFERENTIAL TRAVEL	9.3	21.4
	→ 11.3 FP 15 18.3** ← 1.4 DIFFERENTIAL TRAVEL   16.9 20.3** ← 1.4 DIFFERENTIAL TRAVEL	9.3	15.6

PIN ACTUATION		OPERATING FORCE MAX N	DISCONNECT FORCE MAX N
	→ 50.5 FP 48 46** 43.5 OT ← 0.9 DIFFERENTIAL TRAVEL	16	27
	→ 50.5 FP 48 46** 43.5 OT ← 47	16	27
	→ 50.5 FP 47 45** 43.5 OT ← 48	16	27
	→ 50.5 FP 48 46** 43.5 OT	16	27
	→ 50.5 FP 48 46** 43.5 OT ← 0.9 DIFFERENTIAL TRAVEL	16	37
	→ 50.5 FP 48 46** 43.5 OT ← 0.8 DIFFERENTIAL TRAVEL   46 44.8** ← 0.8 DIFFERENTIAL TRAVEL	16	27

MIN. OPERATING VELOCITY = 1.7mm/S (0.067in/S)  
MAX. OPERATING VELOCITY = 0.17M/S (6.7in/S)  
MAX. OPERATING FREQUENCY = 250 OPS/MINUTE

MIN. OPERATING VELOCITY = 1.0mm/S (0.04in/S)  
MAX. OPERATING VELOCITY = 0.1M/S (3.9in/S)  
MAX. OPERATING FREQUENCY = 250 OPS/MINUTE

TOP PIN PLUNGER OPERATING HEAD CODE C



<b>Honeywell</b>				
TITLE <b>SWITCH LIMIT</b>				
SIZE <b>A1</b>	CAGE CODE <b>91929</b>	DWG NO <b>GS SERIES CHART 1</b>	TYPE <b>I</b>	REV <b>A</b>
SCALE 1:1	REF WT:	SHEET 5 of 7		



PART NUMBER  
GS SERIES CHART 6

BASIC SWITCH CODE	CONTACT BLOCK DIAGRAM
01 07	SNAP ACTION SINGLE POLE 
03 33	SLOW ACTION BREAK BEFORE MAKE 
04 34	SLOW ACTION MAKE BEFORE BREAK 
06 36	SLOW ACTION 2 NORMALLY CLOSED 
20 22	SNAP ACTION DOUBLE POLE 
21 28	SNAP ACTION DOUBLE POLE STEP 1 STEP 2 

CAM ACTUATION PER EN50041		OPERATING FORCE MAX N	DISCONNECT FORCE MAX N
	9.1 FP 20 29.1** ← 4.1 DIFFERENTIAL TRAVEL	5.5	7.0
	9.1 FP 20 29.1** 24.1	5.5	7.0
	9.1 FP 24.1 33.2** 20	5.5	7.0
	9.1 FP 20 29.1**	5.5	7.0
	9.1 FP 20 29.1** ← 4.1 DIFFERENTIAL TRAVEL	5.5	9.6
	9.1 FP 20 29.1** ← 3.7 DIFFERENTIAL TRAVEL   25.5 31.1** ← 3.7 DIFFERENTIAL TRAVEL	5.5	7.0

PIN ACTUATION		OPERATING FORCE MAX N	DISCONNECT FORCE MAX N
	65.2 FP 61 56.9** 52 OT ← 1.7 DIFFERENTIAL TRAVEL	9.5	12
	65.2 FP 61 56.9** 52 O.T. 59.1	9.5	12
	65.2 FP 59.1 55** 52 OT 61	9.5	12
	65.2 FP 61 56.9** 52 OT	9.5	12
	65.2 FP 61 56.9** 52 OT ← 1.7 DIFFERENTIAL TRAVEL	9.5	16.4
	65.2 FP 61 58** 62 OT ← 1.6 DIFFERENTIAL TRAVEL   58.6 57.4** ← 1.6 DIFFERENTIAL TRAVEL	9.5	12

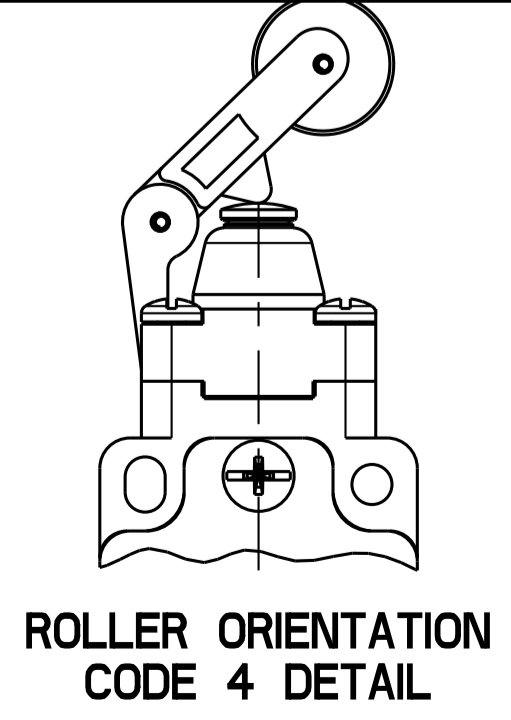
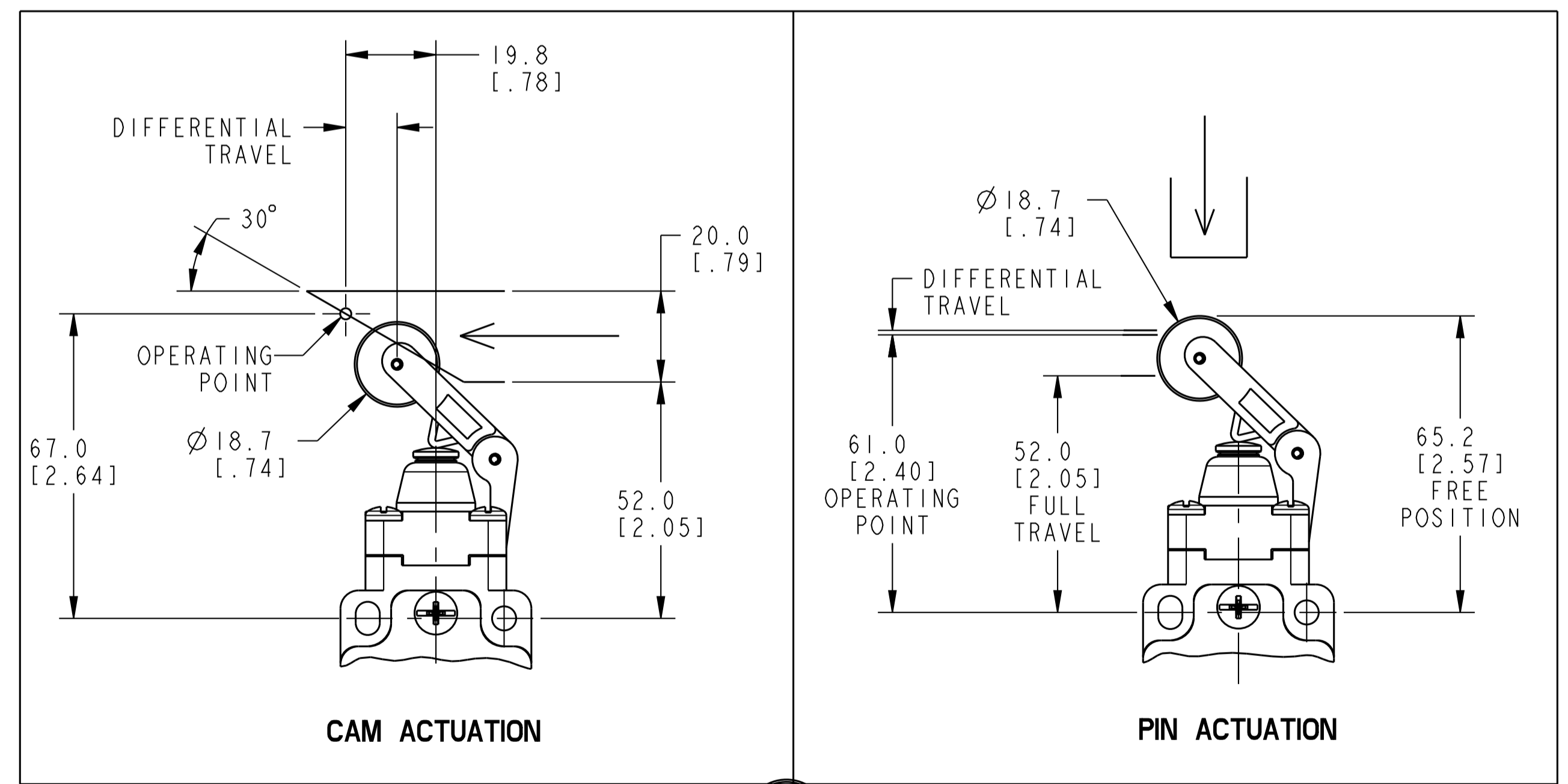
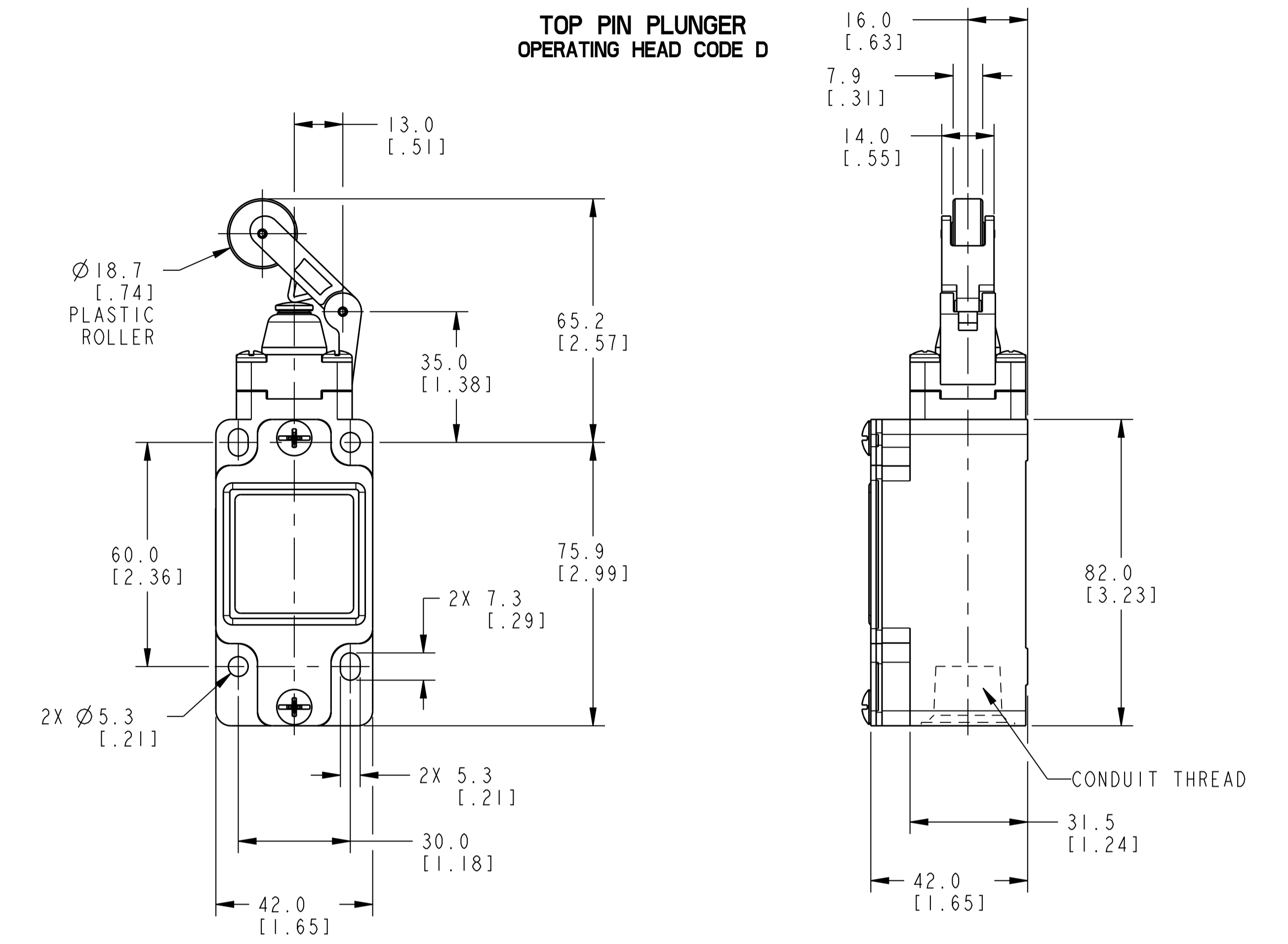
40 41	SLOW ACTION 4 NORMALLY CLOSED 
42 43	SLOW ACTION 2 NORMALLY CLOSED / 1 NORMALLY OPEN BREAK BEFORE MAKE 
44 45	SLOW ACTION 2 NORMALLY CLOSED / 2 NORMALLY OPEN BREAK BEFORE MAKE 
46 47	SLOW ACTION 3 NORMALLY CLOSED / 1 NORMALLY OPEN BREAK BEFORE MAKE 

	9.1 FP 20 29.1** ← 1.2 DIFFERENTIAL TRAVEL	5.5	7.0
	9.1 FP 20 29.1** 24.1	5.5	7.0
	9.1 FP 20 29.1** 24.1	5.5	7.0
	9.1 FP 20 29.1** 24.1	5.5	7.0

	65.2 FP 61 56.9** 52 OT ← 2.1 DIFFERENTIAL TRAVEL	9.5	12
	65.2 FP 61 56.9** 52 OT 59.1	9.5	12
	65.2 FP 61 56.9** 52 OT 59.1	9.5	12
	65.2 FP 61 56.9** 52 OT 59.1	9.5	12

MIN. OPERATING VELOCITY = 2.9mm/S (0.11in/S)  
MAX. OPERATING VELOCITY = 0.29M/S (11.4in/S)  
MAX. OPERATING FREQUENCY = 250 OPS/MINUTE

MIN. OPERATING VELOCITY = 1.7mm/S(0.67in/S)  
MAX. OPERATING VELOCITY = 0.17M/S (6.7in/S)  
MAX. OPERATING FREQUENCY = 250 OPS/MINUTE



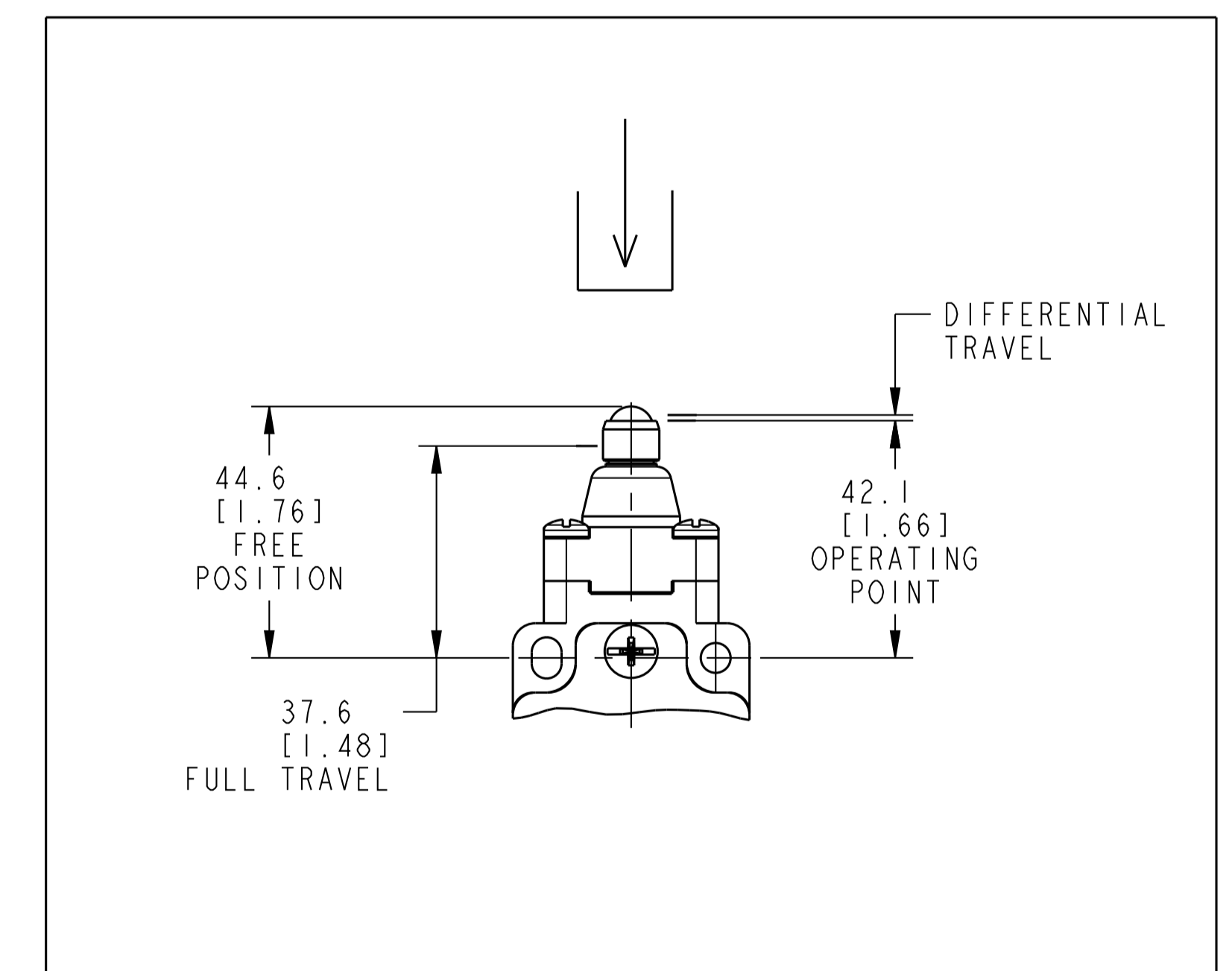
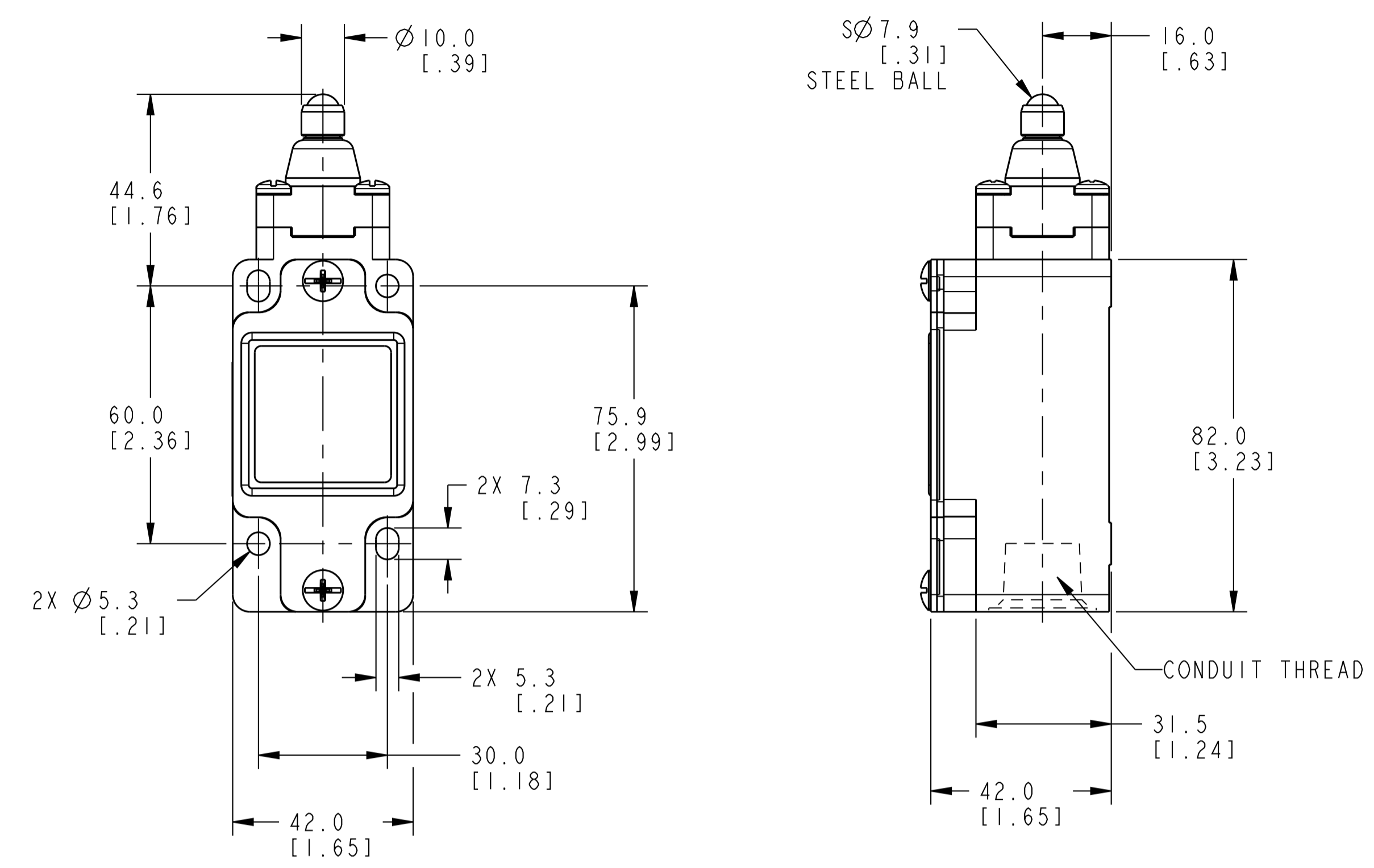
<b>Honeywell</b>				
<b>SWITCH LIMIT</b>				
SIZE	CAGE CODE	DWG NO	TYPE	REV
A1	91929	GS SERIES CHART 1	I	A
SCALE	REF WT:		SHEET 6 of 7	
1:1				

PART NUMBER  
GSA\_SERIES\_CHT1

BASIC SWITCH CODE	CONTACT BLOCK DIAGRAM	PIN ACTUATION		
		NOMINAL TRAVELS AND RELATED TERMINALS -CONTACT CLOSED □-CONTACT OPEN ■-CONTACT CLOSED DIFFERENTIAL TRAVEL,** POSITIVE OPENING TO IEC 947-5-1 DIMENSIONS IN mm	OPERATING FORCE MAX N lbs	DISCONNECT FORCE MAX N lbs
01 07	SNAP ACTION SINGLE POLE 		16 3.6	27 6.0
03 33	SLOW ACTION BREAK BEFORE MAKE 		16 3.6	27 6.0
04 34	SLOW ACTION MAKE BEFORE BREAK 		16 3.6	27 6.0
06 36	SLOW ACTION 2 NORMALLY CLOSED 		16 3.6	27 6.0
20 22	SNAP ACTION DOUBLE POLE 		16 3.6	37 8.2
21 28	SNAP ACTION DOUBLE POLE STEP 1 STEP 2 		16 3.6	27 6.0
40 41	SLOW ACTION 4 NORMALLY CLOSED 		16 3.6	27 6.0
42 43	SLOW ACTION 2 NORMALLY CLOSED/ 1 NORMALLY OPEN BREAK BEFORE MAKE 		16 3.6	27 6.0
44 45	SLOW ACTION 2 NORMALLY CLOSED/ 2 NORMALLY OPEN BREAK BEFORE MAKE 		16 3.6	27 6.0
46 47	SLOW ACTION 3 NORMALLY CLOSED/ 1 NORMALLY OPEN BREAK BEFORE MAKE 		16 3.6	27 6.0

MIN. OPERATING VELOCITY = 1.0mm/S (0.04in/S)  
MAX. OPERATING VELOCITY = 0.1M/S (3.9in/S)  
MAX. OPERATING FREQUENCY = 250 OPS/MINUTE

TOP PIN PLUNGER  
OPERATING HEAD CODE R



<b>Honeywell</b>				
TITLE <b>SWITCH LIMIT</b>				
SIZE <b>A1</b>	CAGE CODE <b>91929</b>	DWG NO <b>GS SERIES CHART 1</b>	TYPE <b>I</b>	REV <b>A</b>
SCALE 1:1	REF WT:	SHEET 7 of 7		