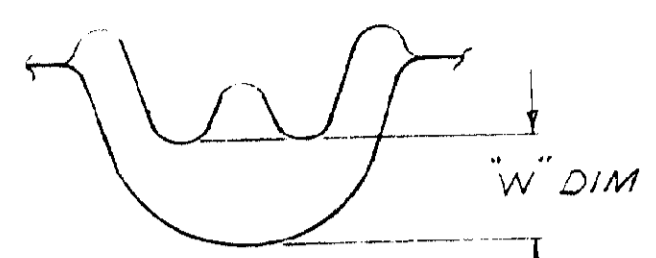
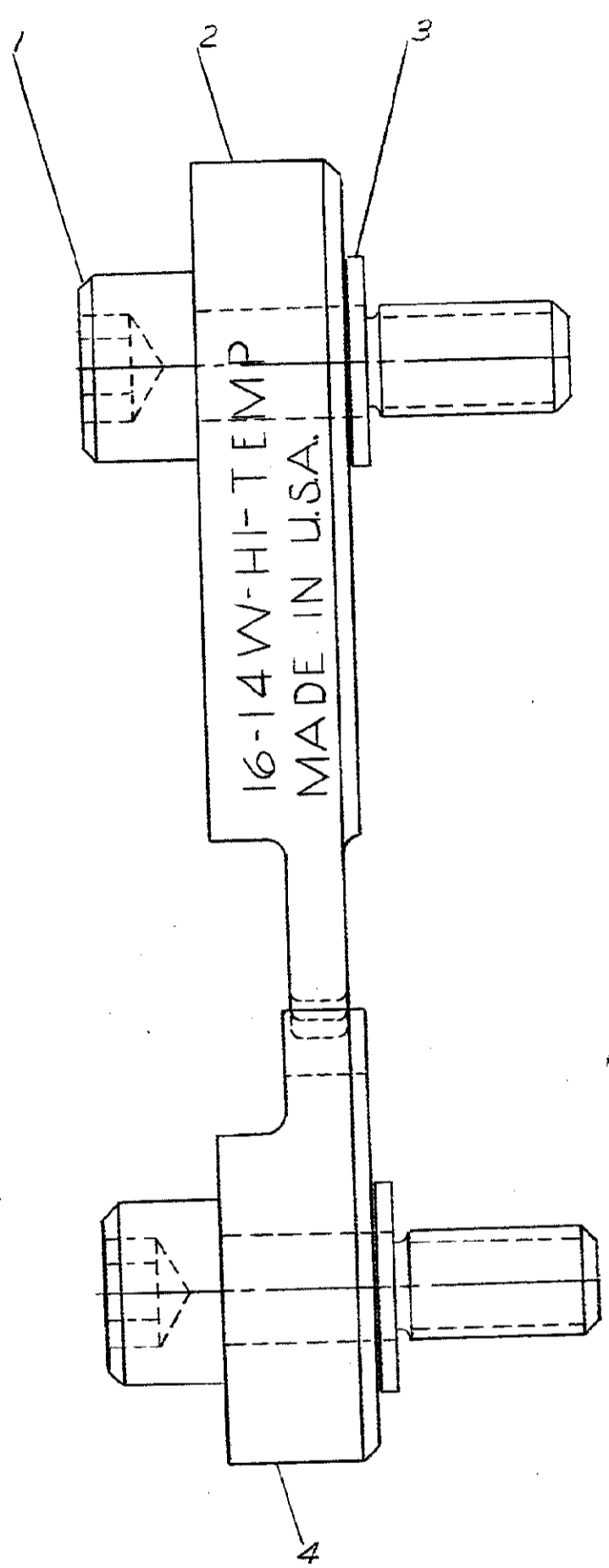
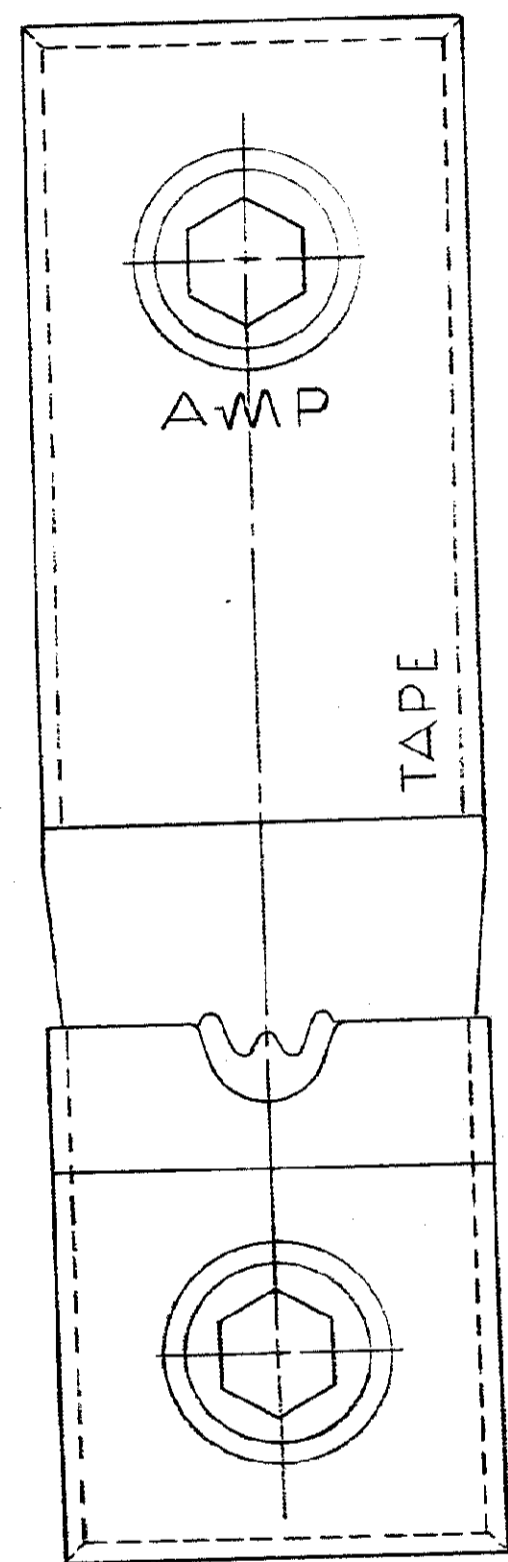
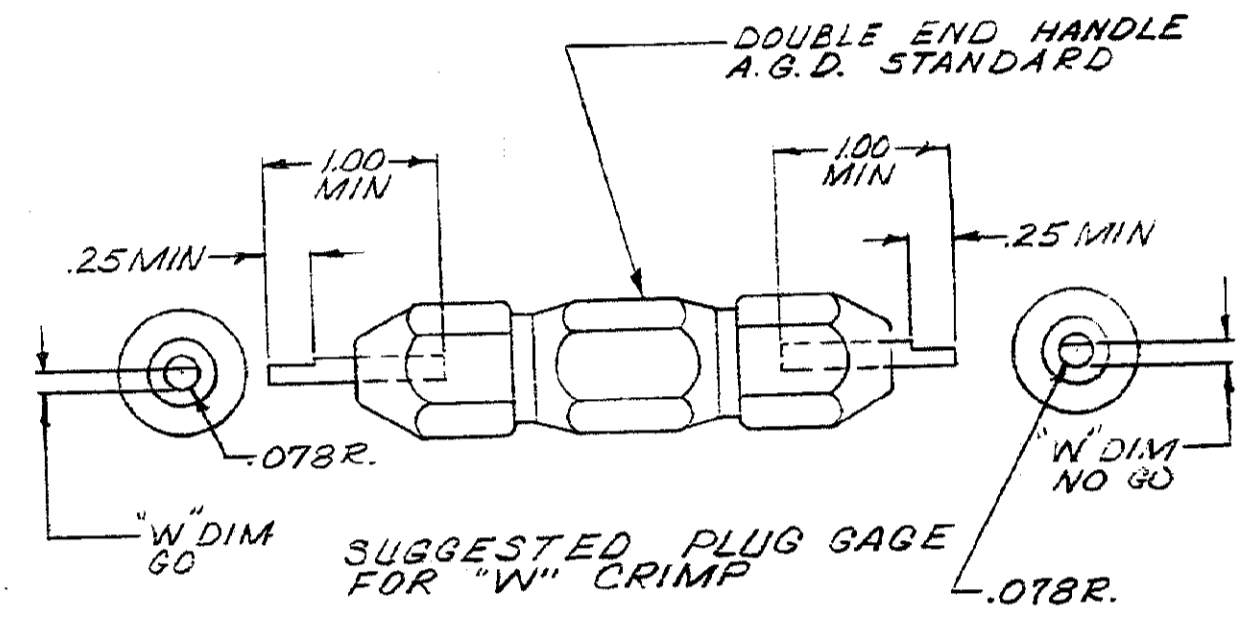


NUMBER 69955



ENLARGED VIEW OF CRIMP

"W" DIM	
GO	NO GO
.059	.065



DIMENSIONS IN INCHES. DO NOT SCALE PRINT

REV	DESCRIPTION	DATE

ITEM NO.	NUMBER	NAME	REMARKS
4	307160-5	NEST	
3	1-21046-3	RING-RETAINING	
2	307161-5	INDENTER	
1	1-59781-3	SCREW-SPECIAL	

REQUIRED PER ASSEMBLY	©1969 BY AMP INCORPORATED. ALL RIGHTS RESERVED. AMP PRODUCTS COVERED BY PATENTS AND/OR PATENTS PENDING.	CUSTOMER COPY REFERENCE ONLY	
DR B. Shenfeld 10-31-69	MATERIAL AND FINISH	AMP AMP INCORPORATED HARRISBURG, PENNA.	
CHK R. J. Jurgens 11-3-69	+	USED ON 69875	
CD R. J. Jurgens	WIRE - RANGE - INSULATION	TYPE W HI-TEMP	
	16-14 +	SCALE 4-1 MIC 69955 0	
	TOLERANCE EXCEPT AS NOTED = 1/100"	DATE 11-5-69	
	DESCRIPTION	DIE ASSEMBLY	