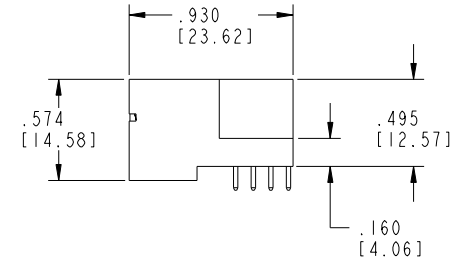
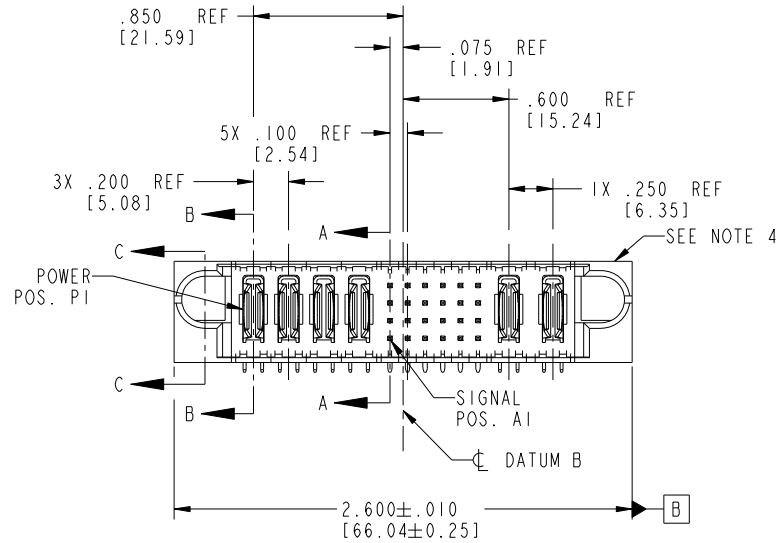


Tous droits strictement reserves. Reproduction ou communication a des tiers interdite sous quelque forme que ce soit sans autorisation écrite du propriétaire. Propriete de c FCI. Droits de reproduction FCI.



All rights strictly reserved. Reproduction or issue to third parties in any form whatever is not permitted without written authority from the proprietor. Property of FCI. Copyright FCI.

PRODUCT NO.	ROWS	POWER				SIGNAL						POWER		E2	
		E1	P1	P2	P3	P4	1	2	3	4	5	6	P5		P6
51939-043 Note: ③	D C B A														



CODE	DIM "M" MATING LENGTH	CONTACT TYPE
E	.220 [5.59]	SIGNAL
F	.220 [5.59]	SIGNAL
R	.270 [6.86]	SIGNAL
S	.270 [6.86]	SIGNAL
T	.270 [6.86]	SIGNAL
U	.270 [6.86]	SIGNAL
PA	N/A [N/A]	POWER

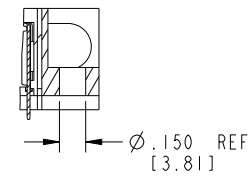
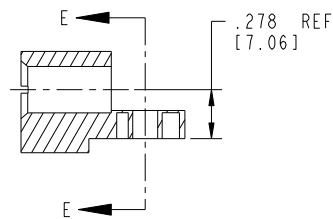
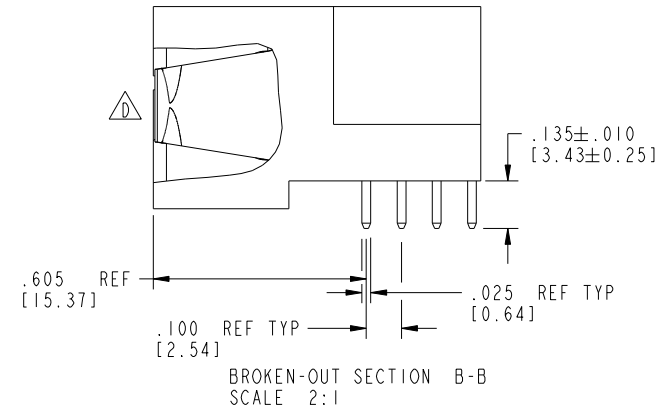
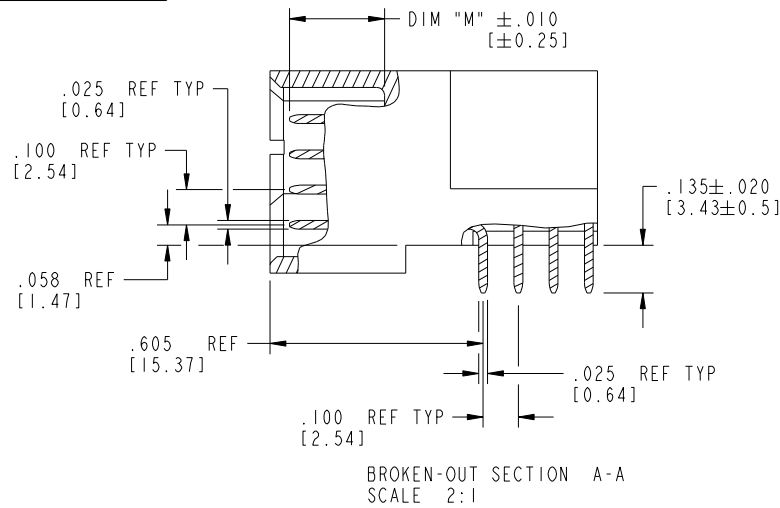
mat'l code				SEE NOTE 2		tolerances unless otherwise specified		CUSTOMER		www.fciconnect.com	
ltr	ecn no.	dr	date	linear	.XX±.01/0.X±0.3	projection		COPY		title	
A	V03-0142	TAB	01/13/03	angles	.XXX±.005/0.XX±0.13			A		4P + 24S + 2P	
B	DG05-0182	SJ	06/22/05		.XXX±.002/0.XXX±0.051			INCH/MM		RIGHT ANGLE SOLDER HEADER	
C	DG06-0008	JMG	01/07/06		0°±2°	scale		1:1		product family	
D	DG08-0273	WD	12/30/08	dr	T. BRUNGARD 01/31/03	A		PwrBlade		code	
				enrg	M. MOSTOLLER 01/31/03	size		A		213	
				chr	M. MOSTOLLER 01/31/03	dwg no		51939-043		sheet	
				appd	M. MOSTOLLER 01/31/03	1 of 4					
sheet index	revision sheet	D	D	D	D						
		1	2	3	4						

cage code 22526

Tous droits strictement reserves. Reproduction ou communication a des tiers interdite sous quelque forme que ce soit sans autorisation écrite du propriétaire. Propriete de c FCI. Droits de reproduction FCI.

All rights strictly reserved. Reproduction or issue to third parties in any form whatever is not permitted without written authority from the proprietor. Property of FCI. Copyright FCI.

PRODUCT NUMBER
51939-043__
Note: ③



mat'l code		SEE NOTE 2		tolerances unless otherwise specified		CUSTOMER		FCI		www.fciconnect.com	
lfr	ecn no.	dr	date	linear	.XX±.01/0.X±0.3	COPY		projection		title	
D					.XXX±.005/0.XX±0.13	INCH/MM		⊕		4P + 24S + 2P	
				angles	.XXX±.0020/0.XXX±0.051	scale		product family		code	
				dr	0°+2°	1:1		PwrBlade		213	
				enrg	T. BRUNGARD 01/31/03			size		sheet	
				chr	M. MOSTOLLER 01/31/03			dwg no		2 of 4	
				appd	M. MOSTOLLER 01/31/03			A		51939-043	
sheet index	revision sheet										

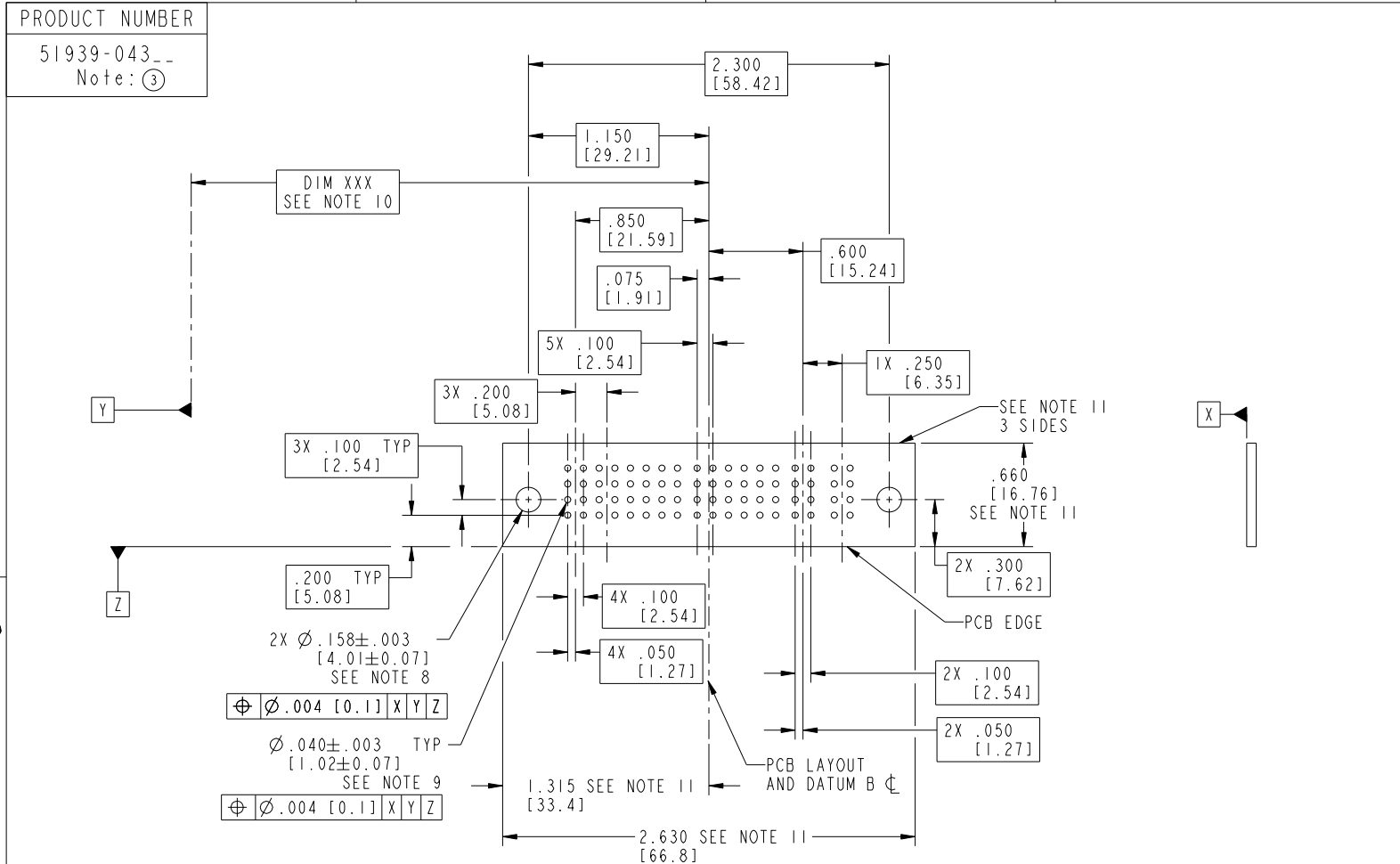
Pro/E

cage code 22526

Tous droits strictement reserves. Reproduction ou communication a des tiers interdite sous quelque forme que ce soit sans autorisation écrite du propriétaire. Propriete de c FCI. Droits de reproduction FCI.



All rights strictly reserved. Reproduction or issue to third parties in any form whatever is not permitted without written authority from the proprietor. Property of FCI. Copyright FCI.



RECOMMENDED PCB LAYOUT

mat'l code		SEE NOTE 2		tolerances unless otherwise specified		CUSTOMER		 www.fciconnect.com	
ltr	ecn no.	dr	date	linear	.XX±.01/0.X±0.3		COPY		title
D					.XXX±.005/0.XX±0.13		projection		
				angles	.XXX±.0020/0.XXX±0.051		 INCH/MM		product family
				dr	0°±2°		scale		PwrBlade
				enrg	T. BRUNGARD 01/31/03		1:1		code
				chr	M. MOSTOLLER 01/31/03		size		213
				appd	M. MOSTOLLER 01/31/03		dwg no		sheet
sheet index	revision sheet						A		3 of 4
							51939-043		

cage code 22526

Tous droits strictement reserves. Reproduction ou communication a des tiers interdite sous quelque forme que ce soit sans autorisation écrite du propriétaire. Propriete de c FCI. Droits de reproduction FCI.



All rights strictly reserved. Reproduction or issue to third parties in any form whatever is not permitted without written authority from the proprietor. Property of FCI. Copyright FCI.

PRODUCT NUMBER
51939-043__
Note: ③

NOTES:

1. DIMENSIONS AND TOLERANCES ARE IN ACCORDANCE WITH ASME Y14.5M, 1994 UNLESS OTHERWISE SPECIFIED.

CONNECTOR NOTES:

2. HOUSING MATERIAL: UL 94 V-0 GLASS FILLED HIGH-TEMP THERMOPLASTIC
 POWER CONTACT MATERIAL: COPPER ALLOY
 SIGNAL PIN MATERIAL: COPPER ALLOY

① 3. SEE ITEM 1 & 2 IN PRINT 10064183 FOR PLATING SPEC OF 51939-043 AND 51939-043LF RESPECTIVELY.

4. MANUFACTURER'S NAME, P/N, AND DATE CODE TO APPEAR ON THIS SURFACE.

5. PRODUCT SPECIFICATION GS-12-149.
 APPLICATION SPECIFICATION BUS-20-067.

6. PACKAGED IN TRAYS.

PCB NOTES:

7. ALL HOLE DIAMETERS ARE FINISHED HOLE SIZE.

8. MOUNTING HOLES, WHERE APPLICABLE, ARE UNPLATED.

9. $\varnothing .0453 \pm .0010$ [1.151 \pm 0.025] DRILLED HOLES PLATED WITH
 $.0003$ [0.008] MIN SnPb OVER $.001$ [0.03]
 TO $.003$ [0.08] Cu PLATING TO ACHIEVE
 $\varnothing .040 \pm .003$ [1.02 \pm .07] HOLE.

10. "DIM XXX" TO BE DETERMINED BY THE CUSTOMER.

11. CONNECTOR KEEP-OUT ZONE.

12. A \triangle SYMBOL WILL BE NEXT TO ANY DIMENSION, VIEW, OR NOTE WHICH HAS BEEN MODIFIED WITH THE CURRENT DRAWING REVISION.

mat'l code		SEE NOTE 2		tolerances unless otherwise specified		CUSTOMER				www.fciconnect.com	
ltr	ecn no.	dr	date	linear	.XX±.01/0.X±0.3		COPY		projection	title	
D					.XXX±.005/0.XX±0.13		A			4P + 24S + 2P	
				angles	.XXX±.002/0.XXX±0.051				RIGHT ANGLE SOLDER HEADER		
					0° ± 2°		INCH/MM		product family		
				dr	T. BRUNGARD	01/31/03	scale		PwrBlade	code	
				enrg	M. MOSTOLLER	01/31/03	1:1		size	213	
				chr	M. MOSTOLLER	01/31/03	A		dwg no	sheet	
				appd	M. MOSTOLLER	01/31/03	51939-043		4 of 4		
sheet index	revision sheet										

cage code 22526