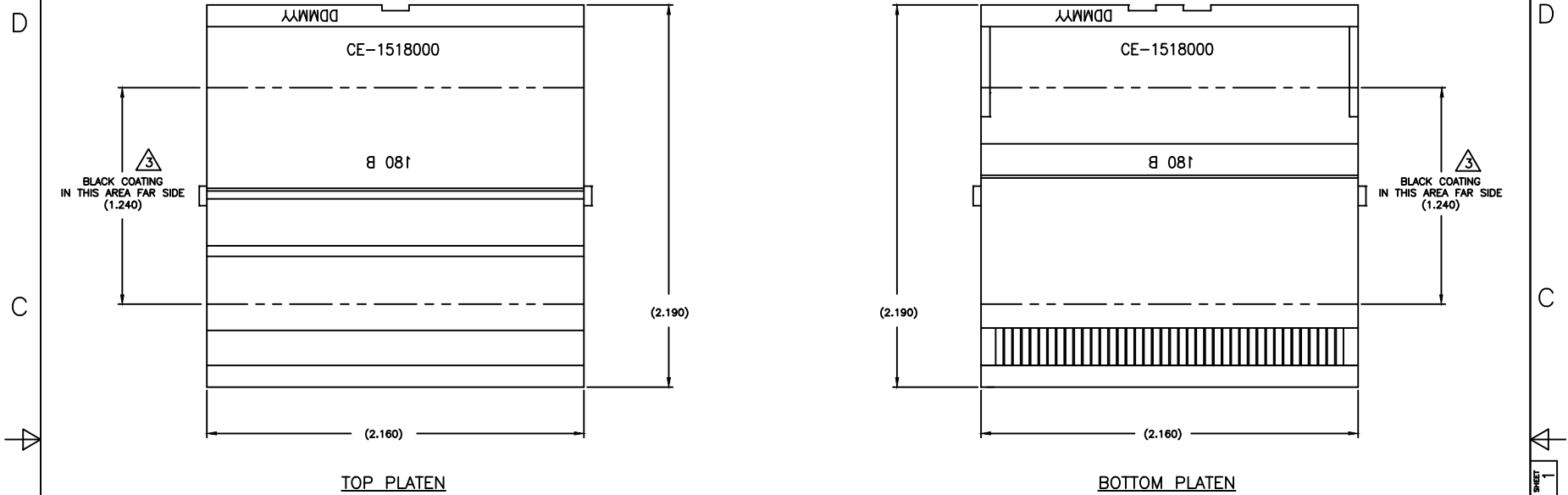


THIS DRAWING AND THE INFORMATION SET FORTH HEREON ARE THE PROPERTY OF TYCO ELECTRONICS AND ARE TO BE HELD IN TRUST AND CONFIDENCE. PUBLICATION, DUPLICATION, DISCLOSURE OR USE FOR ANY PURPOSE NOT EXPRESSLY AUTHORIZED IN WRITING BY TYCO ELECTRONICS IS PROHIBITED.

REVISIONS			
LTR	DESCRIPTION	DATE	APPROVED
B	SKIPPED REV A TO MATCH P.D. REV PER ECO-12-013998	Jul/31/2012	MH




NOTE:

1. THIS DRAWING IS PROVIDED TO DEFINE THE TOP AND BOTTOM PLATENS THAT ARE REQUIRED FOR THE OPERATION OF THE TEMPERATURE CONTROLLED WAFFLE IRON.
2. MATERIAL: 7075 -T651 ALUMINUM PLATE.

3 FINISH: THIS AREA FINISHED WITH HIGH TEMPERATURE BLACK COATING.

© 2012 Tyco Electronics. All rights reserved

Raychem MTC
CUSTOMER DRAWING

THIS DRAWING IS A CONTROLLED DOCUMENT.		DESIGNER ZS.ORBAN	DATE Jul/11/2012	 TE Connectivity
DIMENSIONING AND TOLERANCING PER ASME Y14.5M (DD STANDARDS)		APPROVED M.HIGGY	DATE Jul/11/2012	
UNLESS OTHERWISE SPECIFIED DIMENSIONS ARE INCHES. METRIC DIMENSIONS ARE IN BRACKETS.		MATERIAL: SEE NOTE 2		TITLE PLATEN SET 28 GA FCFC WITH CTA-0103 BUS SHIELD TOP AND BOTTOM TO 26 GA RW
DECIMAL TOLERANCES .XXX ± .005 [.127 mm] .XX ± .02 [.508 mm] .X ± .1 [2.52 mm]		WEIGHT: TOP PLATEN: 28.50 Gram BOTTOM PLATEN: 39.50 Gram		SIZE C
ANGLE TOLERANCE ± 1°		THIRD ANGLE PROJECTION		CAGE CODE: 06090
DWG FILE CE-1518000		DWG. NO. CE-1518000		REV B
		SCALE: NONE		SHEET 1 OF 1

If this document is printed it becomes uncontrolled. Check for the latest revision

SHEET 1
DWG NO. CE-1518000