

Product Description

Description:	16.0MHz GSX-323/X SM Crystal
Product family:	GSX-323
Category:	SM Quartz Crystal
Order code:	MP10204

Features

- ▶ Metal lid can be grounded to minimise EMI
- ▶ Seam sealed for excellent long-term stability
- ▶ Ultra-miniature for maximum space saving

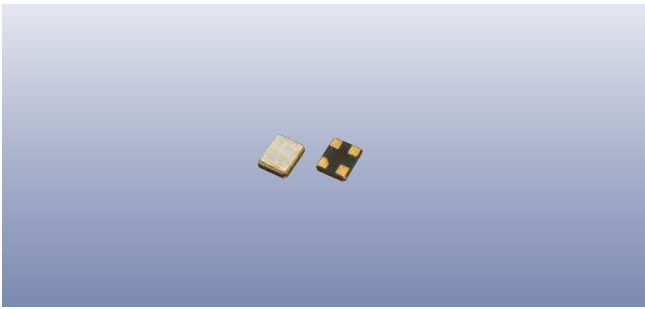
Additional Information

For further information regarding packaging, construction, material composition, soldering profile and environment, please refer to **GSX-323 Product Information sheet**



For dimensions, refer to package drawing: **D0280-A**

Electrical Specifications

Parameter	Value	Notes
Nominal frequency:	16.0MHz	
Calibration tolerance:	±10ppm	@25°C
Temperature stability:	±12ppm	
Operating temperature range:	-20 to +75°C	
Operable temperature range:	-40 to +85°C	
Circuit condition (C_L):	9pF	
Oscillation mode:	Fundamental	
Equivalent series resistance:	80Ω max	
Drive level:	10μW typ, 100μW max	
Ageing:	±3ppm	First year
C_1 :	1.50 fF typ	
C_0 :	0.90pF typ	
L_1 :	62mH typ	



Construction

-  Ceramic body with gold-plated pads
-  Metal lid, seam sealed

Composition



This product is lead-free, and is fully compliant with the RoHS directive 2011/65/EC



Packaging & Handling

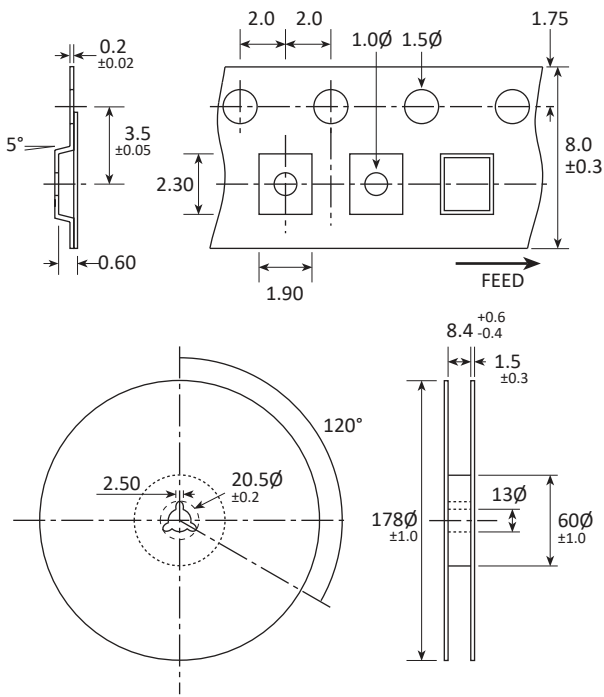
Production quantities supplied on T&R, 3k pcs per reel.
Small quantities may be supplied on tape (no reel), or in bulk.

Marking

FREQUENCY
DC

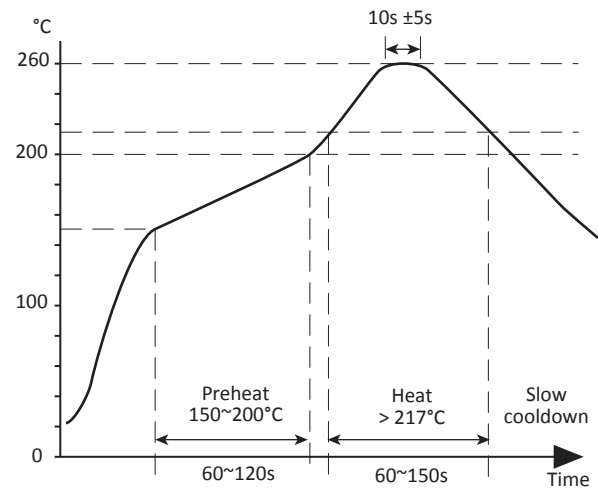
Marking type: Laser
DC = Date code

Tape & Reel Specification

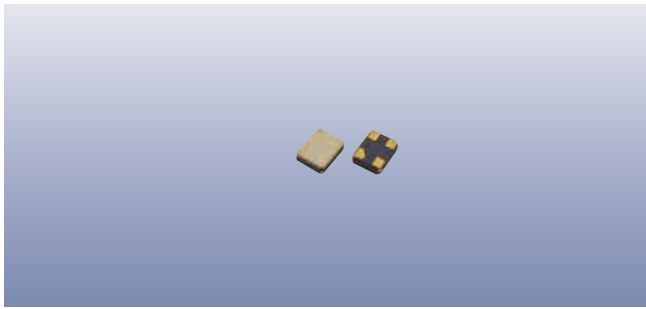


Not to scale. Dimensional tolerances $\pm 0.1\text{mm}$ unless otherwise stated.

Soldering Profile



Maximum solder resistance: $260^\circ\text{C} \times 10 \text{ secs} \times 2$.



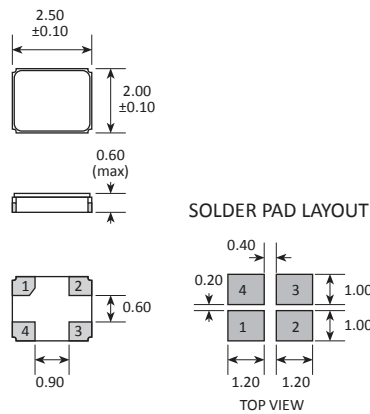
Product Family

GSX-323, GRX-320

Construction

- ▮▮▮▮▮ Ceramic body with gold-plated pads
- ▮▮▮▮▮ Metal lid, seam sealed

Dimensions (mm)



PAD	CONNECTION
1	Crystal
2	Ground & lid
3	Crystal
4	Ground & lid