

WD57M- X X X X XX

SWITCH FUNCTION CODE	SWITCH FUNCTION DESCRIPTION
1	MECHANICAL, MOMENTARY, SOLDER TERMINAL
A	MECHANICAL, MOMENTARY, WIRELEADS

HOUSING MATERIAL CODE	HOUSING DESCRIPTION
1	ZINC ALLOY, VELOUR CHROMED PLATED

ILLU. TYPE CODE	ILLUMINATION TYPE DESCRIPTION
0	NON-ILLUMINATION
2	RING ILLUMINATION
3	POWER/STANDBY SYMBOL ILLUMINATION

LED COLOR CODE	LED COLOR
N	NONE
R	RED
G	GREEN
Y	YELLOW
A	AMBER
B	BLUE
W	WHITE
RB	RED/BLUE
RG	RED/GREEN

LED INLET VOLTAGE CODE		LED INLET VOLTAGE
NON-WIRELEADS	IF BLANK*	(SEE NOTE)
	05	5V
WIRELEADS	IF BLANK*	(SEE NOTE)
	05	5V
	12	12V
	24	24V

MECHANICAL CHARACTERISTICS:

SWITCH CIRCUITRY: SPST-NO-DB (CONTACT FORM X)
 SWITCH ACTION: MOMENTARY
 BUTTON TRAVEL: 1.6mm [.063] NOMINAL
 OPERATING FORCE: 306g [3N] NOMINAL
 CONTACT BOUNCE: 1ms NOMINAL
 PANEL THICKNESS: 0.5 - 5.0mm [.020 - .197]
 SWITCH CONTACTS: SILVER PLATED
 NUT TORQUE FORCE: 11.5 kgf/cm [MAX 10 LB/in]

ENVIRONMENTAL SPECIFICATIONS:

ACTUATOR INGRESS PROTECTION: IP67
 OPERATING TEMPERATURE:
 NON-ILLUMINATION TYPE: -40°C to +85°C [-40°F to +185°F]
 ILLUMINATION TYPE: -40°C to +85°C [-40°F to +185°F]
 MOMENTARY: -40°C to +85°C [-40°F to +185°F]

ELECTRICAL SPECIFICATIONS:

CURRENT RATINGS: 10mA@12VDC, 100K cycles
 DIELECTRIC STRENGTH: 1,000VAC
 INSULATION RESISTANCE: 1G OHM
 CONTACT RESISTANCE:
 50m OHMS MAX INITIAL(NON-WIRELEADS)
 250m OHMS MAX INITIAL(WIRELEADS)

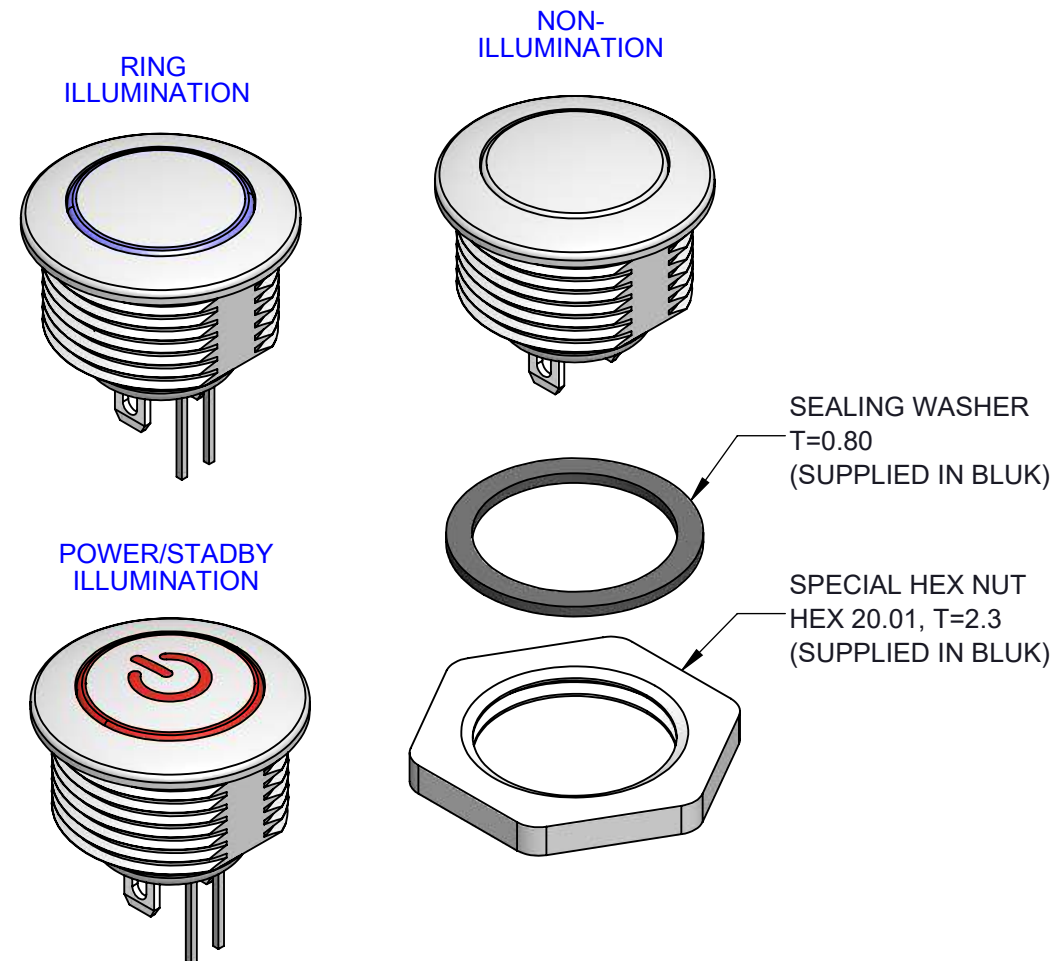
NOTE

- CURRENT LIMITING RESISTOR IS REQUIRED TO LIMIT LED FORWARD CURRENT TO 20mA
- SUPPLY HEX NUT AND SEALING WASHER BULK PACKED.
- INNER RESISTOR ONLY FOR LED :RED / BLUE / GREEN / WHITE.

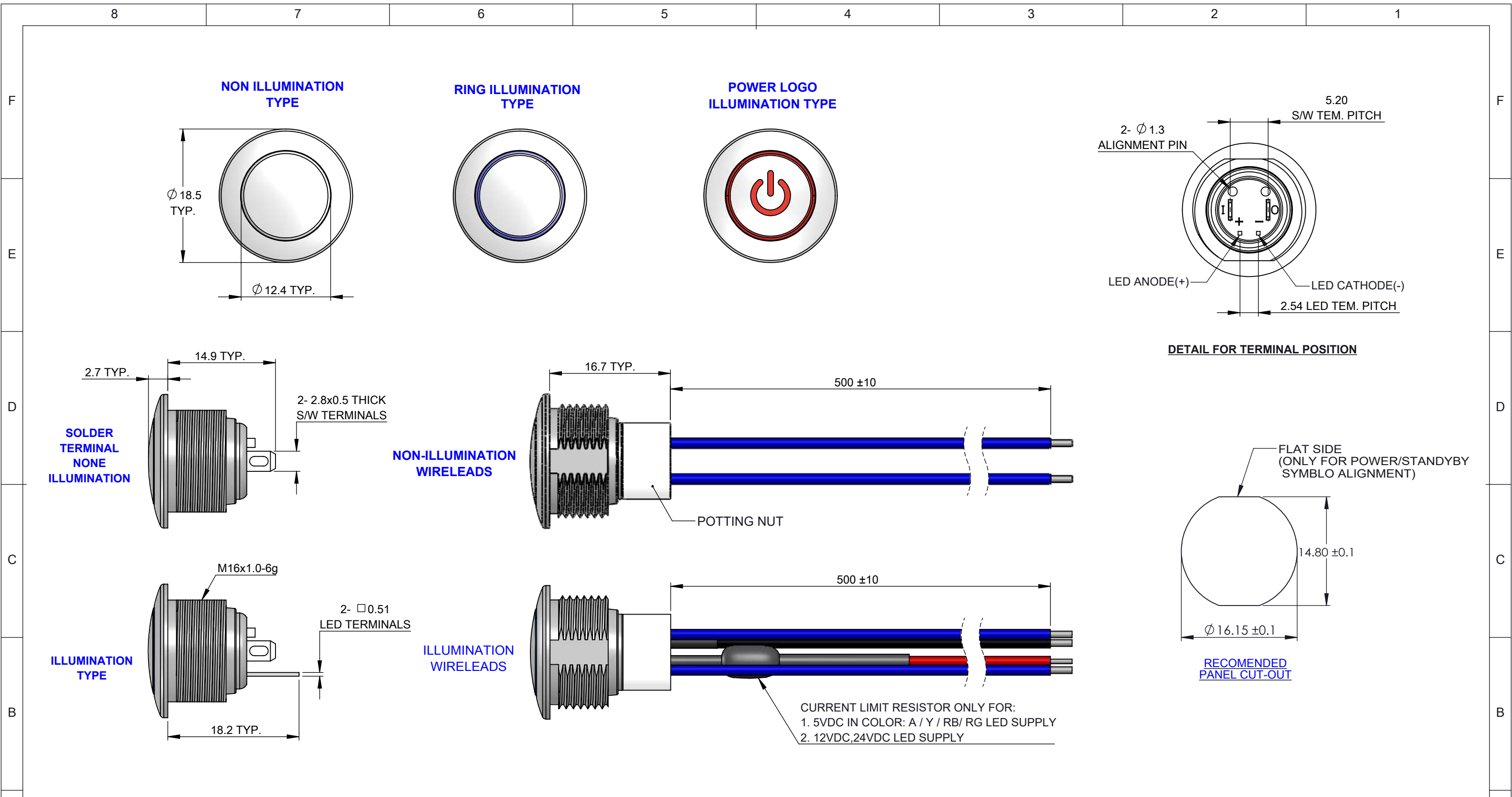
LED SPECIFICATION						
LED CODE	LED SINGLE COLOR	Vf(VDC)	If	CIRCUITRY		
		TYP.	(mA)			
R	RED	2.0	20			
A	AMBER	2.0	20			
Y	YELLOW	2.0	20			
G	GREEN	3.0	20			
B	BLUE	3.1	20			
W	WHITE	3.3	20			
LED CODE	BICOLOR LED		Vf(VDC)			If
	COLOR1	COLOR2	TYP.	(mA)		
RB	RED	BLUE	2.0(RED) 3.3(BLUE)	20		
RG	RED	GREEN	2.0(RED) 3.4(GREEN)	20		

NOTE:
Hand Soldering Temperature (4mm above from Body) : 320°C for 3 seconds

WIRELEADS SPECIFICATION					
WIRELEADS TYPE	WIRELEADS SPECIFICATION	SW TERMINAL		LED	
		/	O	+	-
ILLUMINATION	AWG26 / UL1007	BLUE	BLUE	RED	BLACK
NON-ILLUMINATION		BLUE	BLUE	--	--



DWG TYPE SALES DRAWING	DRAWN y.w.	TOLERANCES: UNLESS OTHERWISE NOTED X.X ± 0.5 X.XX ± 0.38 ANGULAR ± 1	DWG TITLE WD57M-MECHANICAL MOMENTARY, SOLDER TERMINAL, MINI HOUSING, WIRELEADS, NONE/RING/POWER-STANDBY ILLUMINATION							
STATUS RELEASE	REVIEW g.y.		DWG NO. WD57M-1,A							
<small>This document is the intellectual property of ITW Electronic Business Asia Co., Limited and may contain confidential, proprietary, privileged information protected by law. Neither this document nor any information it contains can be reproduced, transformed to any other format, or distributed, without written permission by ITW Electronic Business Asia Co., Limited. 本文件為安夫達百電有限公司之智慧財產，非經許可不得翻取、複製、轉變成其他形式使用或散佈。</small>		APPROVED P.L.	THIRD ANGLE PROJECTION 	REF: S57M-9018X	<input checked="" type="checkbox"/> 管制文件 <input type="checkbox"/> 非管制文件	Unit mm	SCALE 3 : 2	REV 3	RoHS Compliant	SHEET 1 OF 3



DWG TYPE SALES DRAWING	DRAWN <i>y.w.</i>	TOLERANCES: UNLESS OTHERWISE NOTED X.X ± 0.5 X.XX ± 0.38 ANGULAR ±1	DWG TITLE WD57M-MECHANICAL MOMENTARY, SOLDER TERMINAL, MINI HOUSING, WIRELEADS, NONE/RING/POWER-STANDBY ILLUMINATION					
STATUS RELEASE	REVIEW <i>g.y.</i>		DWG NO. WD57M-1,A					
<small>This document is the intellectual property of ITW Electronic Business Asia Co., Limited and may contain confidential, proprietary, privileged information protected by law. Neither this document nor any information it contains can be reproduced, transformed to any other format, or distributed, without written permission by ITW Electronic Business Asia Co., Limited. 本文件為安達維百電股份有限公司之智慧財產，非經許可不得翻取、複製、轉變成其他形式使用或散佈。</small>	APPROVED <i>P.L.</i>	THIRD ANGLE PROJECTION 	<input checked="" type="checkbox"/> 管制文件 <input type="checkbox"/> 非管制文件	Unit mm	SCALE 3 : 2	REV 3	RoHS Compliant	SHEET 2 OF 3
	DATE 2012.11.13	REF: S57M-9018X						