

Customer Information Sheet

DRAWING No.: G125-971XX02

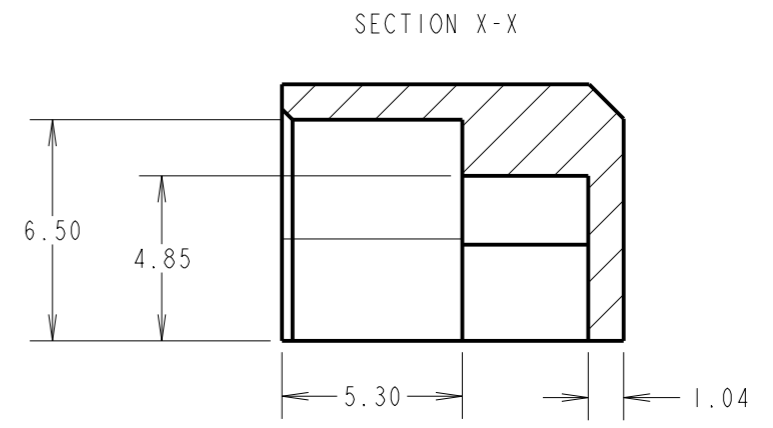
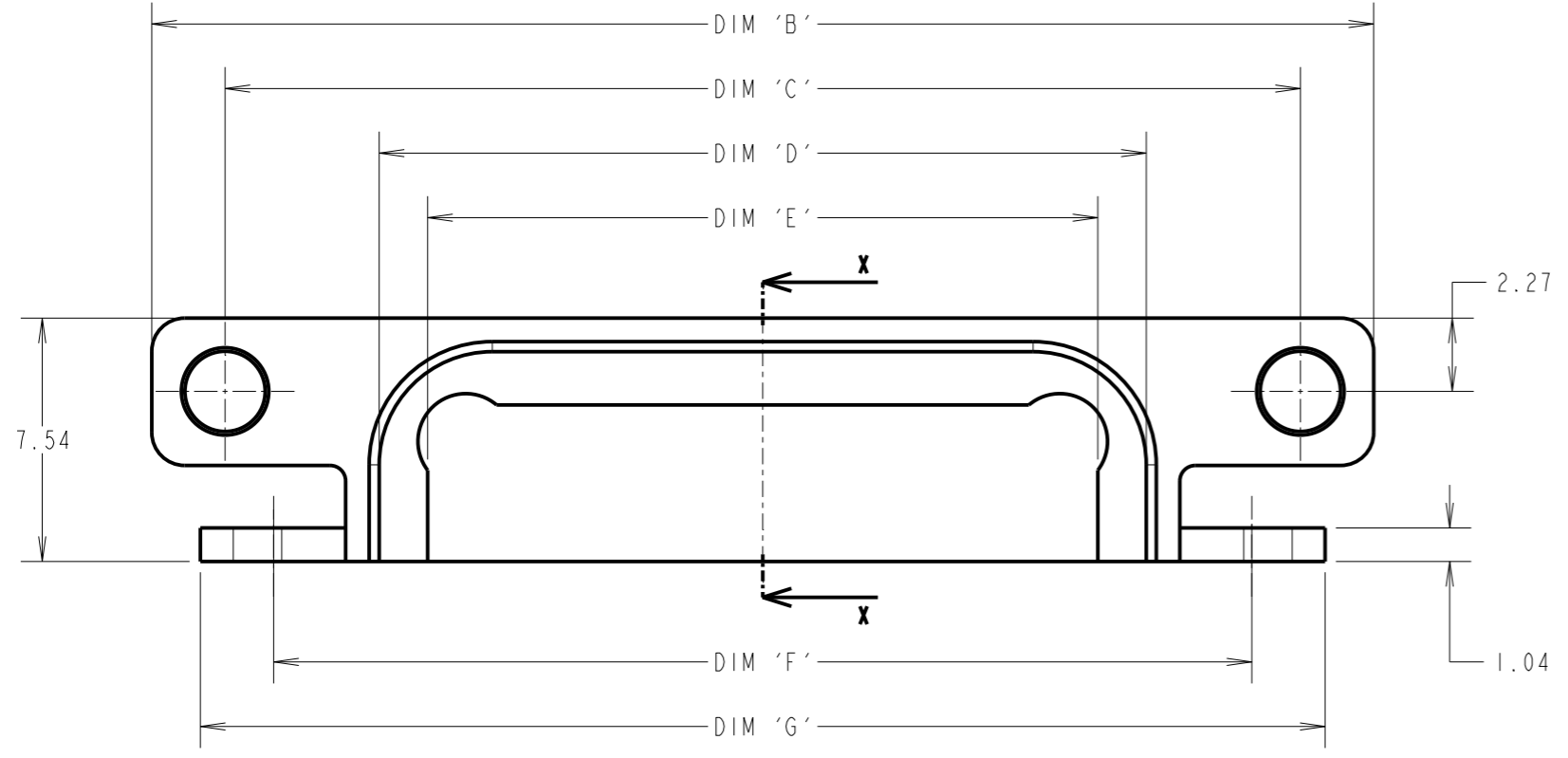
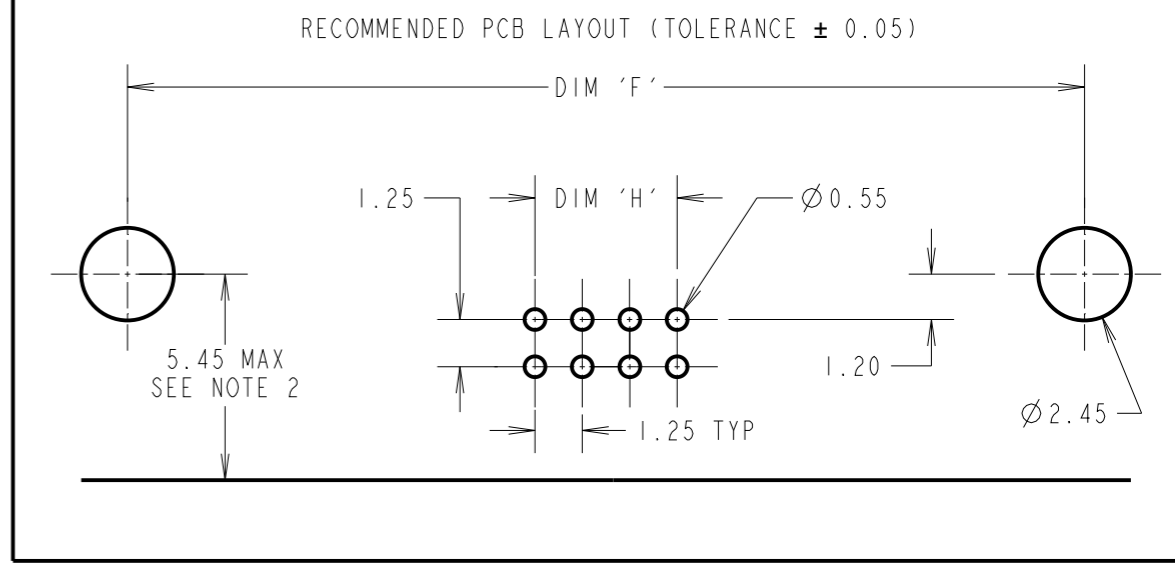
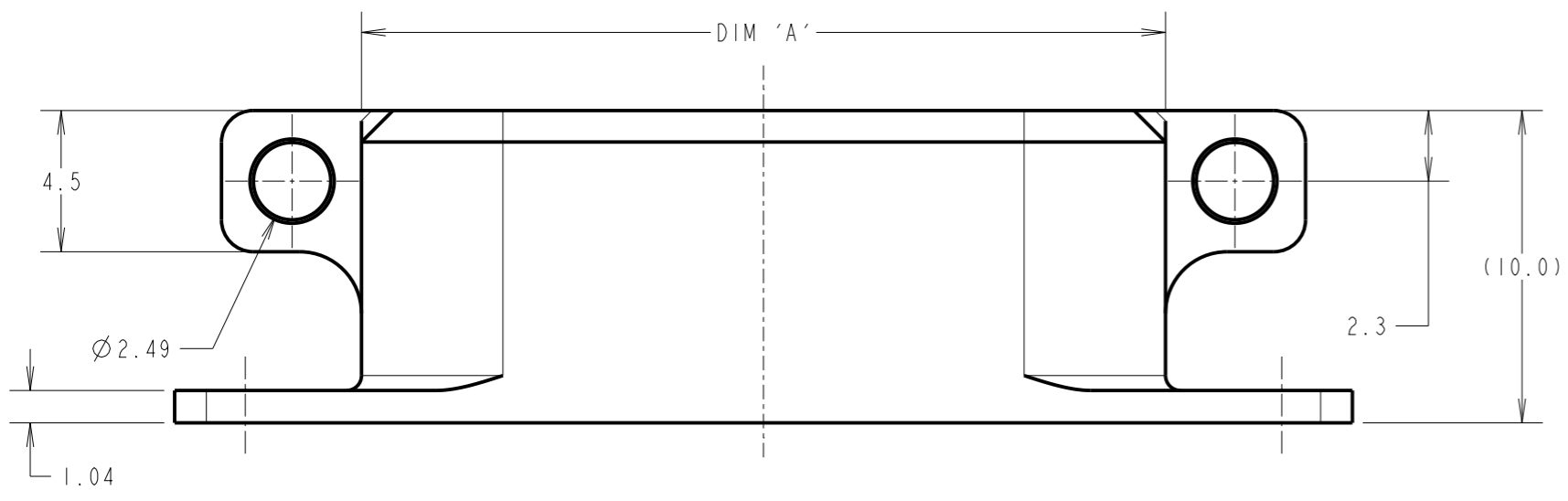
IF IN DOUBT - ASK

©

NOT TO SCALE

THIRD ANGLE PROJECTION

ALL DIMENSIONS IN mm



- NOTES:
- ALL PCB LAYOUTS DRAWN WITH MATING FACE BELOW PINS. LAYOUTS ONLY FOR BACKSHELL MOUNTING, FOR CONNECTOR PCB LAYOUT SEE COMPONENT DRAWING.
 - MAXIMUM DISTANCE FROM EDGE OF BOARD WHEN PAIRING WITH SHIELDED CABLE.
 - MOUNTING HARDWARE NOT PROVIDED, M2 FIXINGS WITH 4.5mm MAX BOLT HEAD DIAMETER RECOMMENDED. BOLT FROM ABOVE.
USE HEX SOCKET BOLT G125-4520000B COMBINED WITH SLOTTED NUT G125-4510000B FOR MOUNTING TO PCBs OR PANELS UP TO 2mm THICK.

DIMENSION	CALCULATION
DIM 'A'	(TOTAL No. OF CONTACTS - 2) x 0.625 + 17.1
DIM 'B'	(TOTAL No. OF CONTACTS - 2) x 0.625 + 29.1
DIM 'C'	(TOTAL No. OF CONTACTS - 2) x 0.625 + 24.56
DIM 'D'	(TOTAL No. OF CONTACTS - 2) x 0.625 + 15.0
DIM 'E'	(TOTAL No. OF CONTACTS - 2) x 0.625 + 12.0
DIM 'F'	(TOTAL No. OF CONTACTS - 2) x 0.625 + 21.55
DIM 'G'	(TOTAL No. OF CONTACTS - 2) x 0.625 + 26.1
DIM 'H'	(TOTAL No. OF CONTACTS - 2) x 0.625

ORDER CODE:
G125-971XX02
TOTAL No. OF CONTACTS _____
06, 10, 12, 16, 20, 26, 34 & 50

RA	I	04.03.22	31430
NAME	ISS.	DATE	CN/CO
APPROVED: R.ALEXANDER			
CHECKED: R.PORTLOCK			
DRAWN: R.ALEXANDER			
CUSTOMER REF.:			
ASSEMBLY DRG:			

SPECIFICATIONS:
MATERIAL = ALUMINIUM ALLOY
FINISH = ELECTROLESS NICKEL
ENVIRONMENTAL:
TEMPERATURE RANGE = -55°C TO +125°C



THIS DRAWING AND ANY INFORMATION OR DESCRIPTIVE MATTER SET OUT HEREON ARE CONFIDENTIAL AND COPYRIGHT PROPERTY OF THE HARWIN GROUP AND MUST NOT BE DISCLOSED, LOANED, COPIED OR USED FOR MANUFACTURING, TENDERING OR FOR ANY OTHER PURPOSE WITHOUT THEIR WRITTEN PERMISSION.

TOLERANCES
X. = ±1mm
X.X = ±0.50mm
X.XX = ±0.20mm
X.XXX = ±0.01mm
ANGLES = ±5°
UNLESS STATED

MATERIAL: SEE ABOVE
FINISH: SEE ABOVE
S/AREA: mm²

TITLE: GECKO MALE HORIZONTAL PANEL MOUNT BACKSHELL
DRAWING NUMBER: **G125-971XX02**
SHT 5 OF 6

Customer Information Sheet

DRAWING No.: G125-971XX02

IF IN DOUBT - ASK

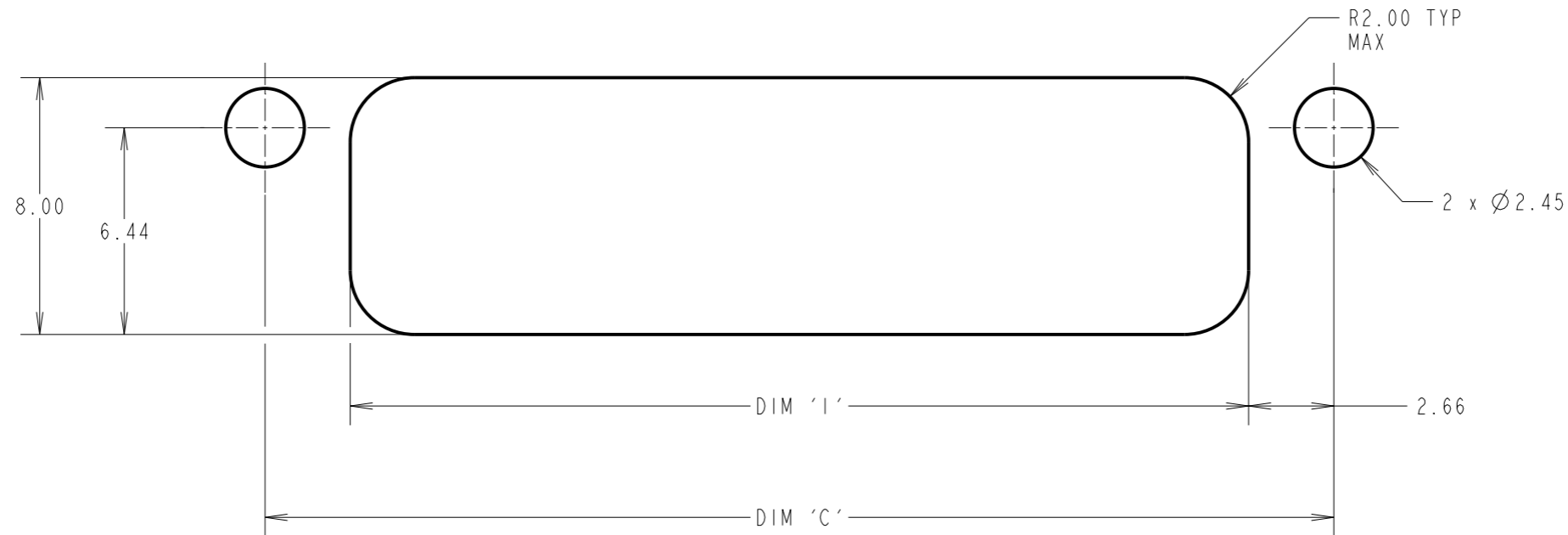
©

NOT TO SCALE

THIRD ANGLE PROJECTION

ALL DIMENSIONS IN mm

RECOMMENDED PANEL CUTOUT FOR USE WITH SHIELDED ASSEMBLIES
SEE NOTES 4 & 5
(TOLERANCE ± 0.05)



NOTES CONT'D:

- 4. ALL PANEL LAYOUTS ARE VIEWED FROM THE FRONT OF THE CONNECTOR WITH THE SHIELD MOUNTED ON TOP.
- 5. PANELS MAY BE OF ANY THICKNESS WHEN USING THE LAYOUTS ABOVE.

DIMENSION	CALCULATION
DIM 'C'	(TOTAL No. OF CONTACTS - 2) x 0.625 + 24.56
DIM 'I'	(TOTAL No. OF CONTACTS - 2) x 0.625 + 19.23

ORDER CODE:

G125-971XX02

TOTAL No. OF CONTACTS _____
06, 10, 12, 16, 20, 26, 34 & 50

RA	I	04.03.22	31430
NAME	ISS.	DATE	CN/CO
APPROVED: R.ALEXANDER			
CHECKED: R.PORTLOCK			
DRAWN: R.ALEXANDER			
CUSTOMER REF.:			
ASSEMBLY DRG:			

HARWIN

www.harwin.com
technical@harwin.com

THIS DRAWING AND ANY INFORMATION OR DESCRIPTIVE MATTER SET OUT HEREON ARE CONFIDENTIAL AND COPYRIGHT PROPERTY OF THE HARWIN GROUP AND MUST NOT BE DISCLOSED, LOANED, COPIED OR USED FOR MANUFACTURING, TENDERING OR FOR ANY OTHER PURPOSE WITHOUT THEIR WRITTEN PERMISSION.

TOLERANCES
X. = ± 1 mm
X.X = ± 0.50 mm
X.XX = ± 0.20 mm
X.XXX = ± 0.01 mm
ANGLES = $\pm 5^\circ$
UNLESS STATED

MATERIAL:

SEE SHEET 5

FINISH:

SEE SHEET 5

S/AREA:

mm²

TITLE:

GECKO MALE HORIZONTAL
PANEL MOUNT BACKSHELL

DRAWING NUMBER:

G125-971XX02

SHT
6
OF
6