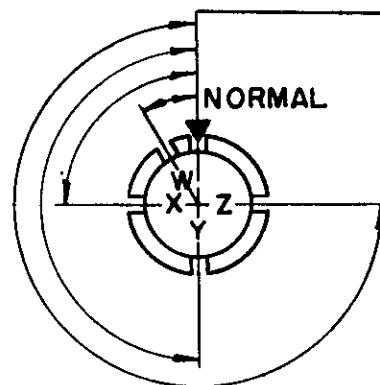
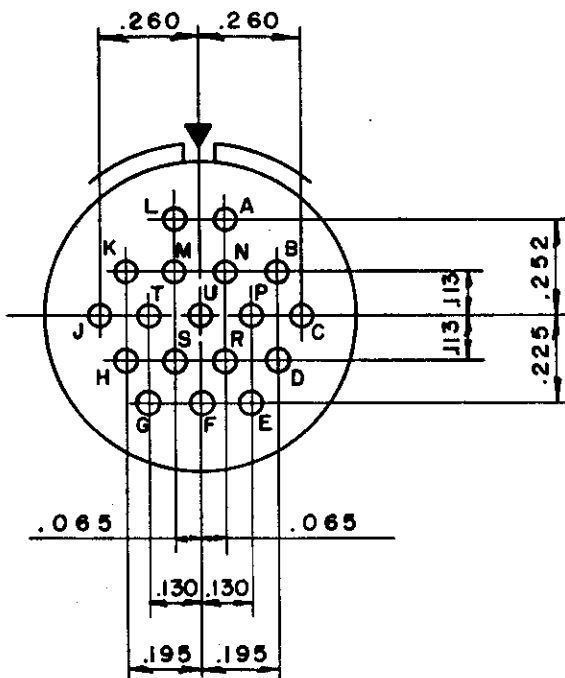


L-15214-18

REL. 33508-59	WAS	DATE	D'MAN	APPD.
1 35525-831	ADD ALT POS NOTE	7-14-59	LAMBERT	<i>lll</i>
A 13531-62	STD PRACTICE	6-30-65	Hayes	<i>Hayes</i>



CONSIDER INSERT POSITION
FIXED WITH SHELL
ROTATING TO ALTERNATE
POSITION

1

18 SIZE 20 CONTACTS
SERVICE RATING TYPE 'I'

I. FRONT FACE OF PIN INSERT SHOWN.

NOTE:

ARR NO.	ALTERNATE KEYWAY POS.			
	W	X	Y	Z
-18	15°	90°	180°	270°

MATERIAL SPEC.	PROCESS SPEC.	SCINTILLA MAGNETO DIVISION BENDIX AVIATION CORPORATION SIDNEY, N. Y., U.S.A.				TOLERANCES UNLESS OTHERWISE SPECIFIED					
HEAT TREAT SPEC.	FINISH SPEC.					NAME		INSERT ARRANGEMENT SIZE 14-1820		FRACTIONS ±	ANGLES ±
TOOL ACC.	COM. REC.	O'MAN		CHECKER	MAT.	ST'DS	CH. D'MAN	APPROVED	SCALE	SURFACE ROUGHNESS MICRO-INCHES RMS VALUE MAX	WEIGHT - LBS
		A. NILES		<i>[Signature]</i>			<i>[Signature]</i>	<i>[Signature]</i>	NONE		
		10-1-57		12-2-57			12-3-57	12-3-57			
										SUPERSEDES AND IS NOT INTERCHANGEABLE	
										SUPERSEDED BY	
										REF.	
										L-15214-18	