

Vertical Dual Row Top Entry Card Edge

9159-650



GENERAL DESCRIPTION

KYOCERA AVX Interconnect continues to develop unique connectors to fill the gap in the market. The newest addition to KYOCERA AVX's broadening line of one piece card edge connectors is the 4p-12p dual row top entry version 9159-650, which is extension of popular single row version 9159-550. This new configuration with staggered dual row contacts will allow doubled number of positions in similar size of the connector. Available in both without and with polarization where the mating PCB layout is modified to form a key, to avoid wrong insertion to the connector.

This small connector is packed with several key features that provide significant functionality in a broad range of applications. The proven contact system is gold plated for enhanced reliability, signal integrity and full 2.5A/contact current rating. The connector is designed for mating PCB board with 1.6mm thickness and gold plated pads.

APPLICATIONS

Provides a one piece connector solution for perpendicular PCB mating in applications:

- Automotive
- Industrial
- Lighting

FEATURES AND BENEFITS

- 2.5 Amps per contact current rating meets robust application requirements
- Doubled number of positions with dual row solution
- Optional kapton tape version supports pick and place robotic placement and SMT termination
- Available version with polarization where the mating PCB layout is modified to form a key, to avoid error during insertion
- Gold plated BeCu contact system for high reliability in harsh environments

ELECTRICAL

Current Rating	2.5 Amps / Contact
Voltage Rating	300 VAC

ENVIRONMENTAL

Operating Temperature	-40°C to +125°C
------------------------------	-----------------

MECHANICAL

Insulator Material	High temperature Nylon UL94V-0 rated
Contact Material	Beryllium Copper
Durability	10 Cycles
Plating	Gold / Tin over Nickel

HOW TO ORDER

Prefix 00 **Series** 9159 **No. of Ways** 0XX **65X** **9** **0** **6**

Plating Options
 6 = Gold plating on nose with Tin on Tails

Keying
 0 = without keying
 1 = with keying

Insulator Color

Code	Color	Application
9	White	UL Approved Standard

Double Sided Thru Board Card Edge
 651 = with Kapton Tape
 653 = without Kapton Tape

Code	Size	Contacts
004	2x2	4
006	2x3	6
008	2x4	8
010	2x5	10
012	2x6	12

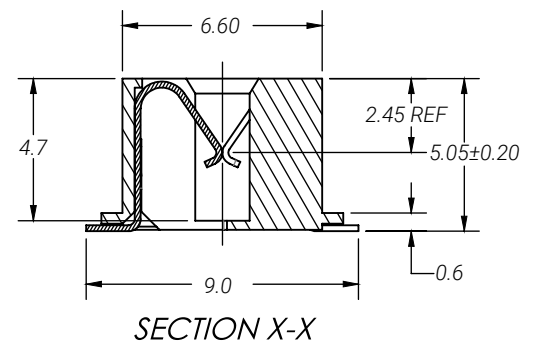
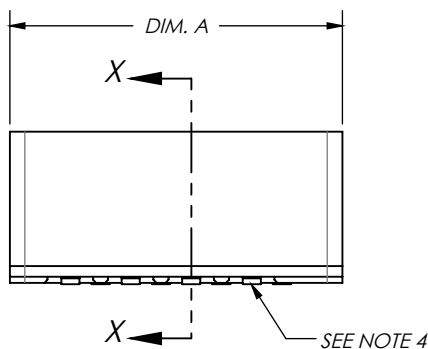
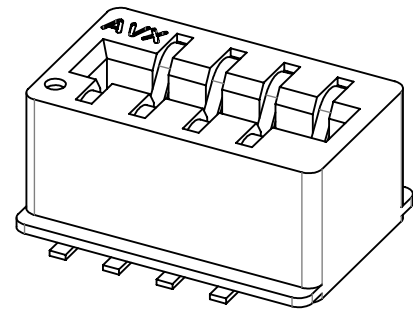
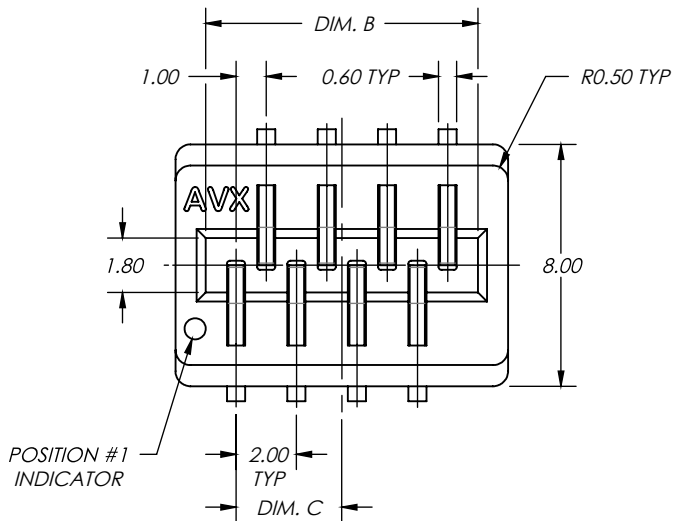
Vertical Dual Row Top Entry Card Edge

9159-650

00 9159 0XX 65X 906

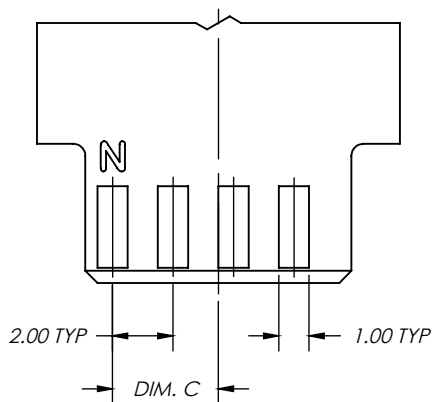
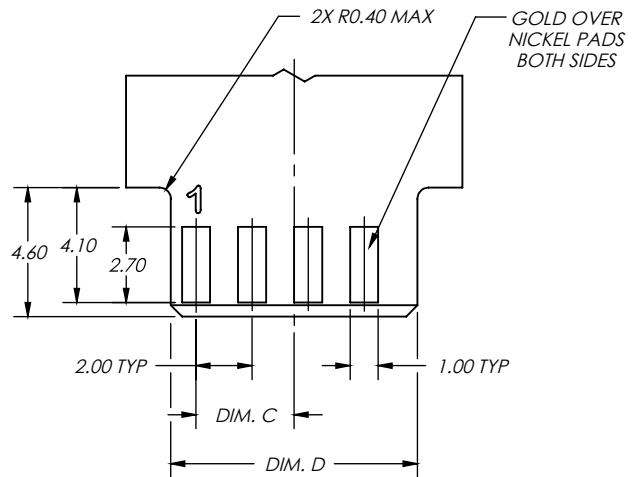
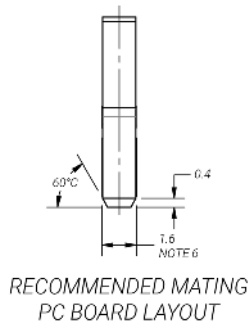
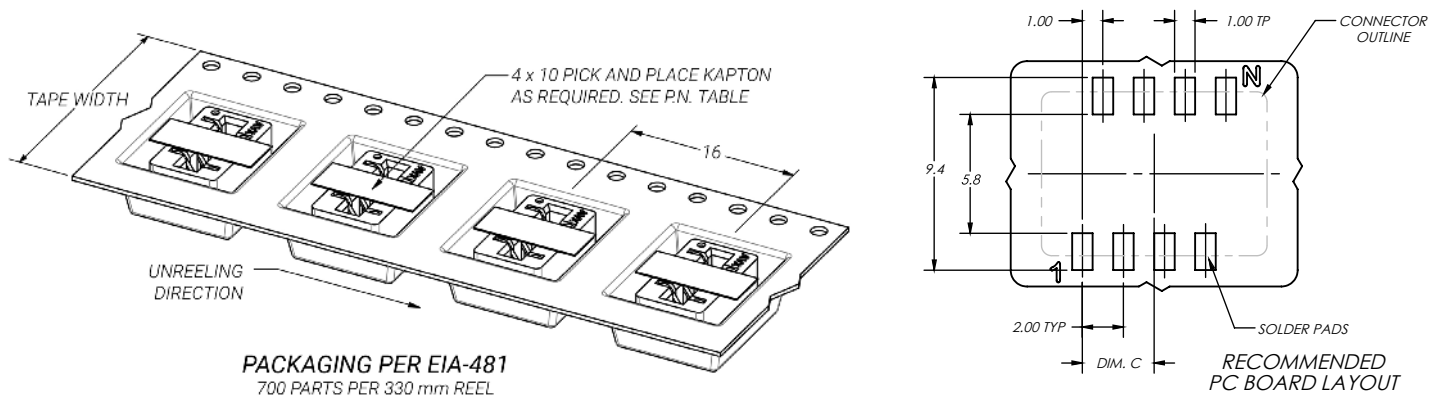
DIMENSIONS

Part Number	Size	Dim. A	Dim. B	Dim. C	Dim. D	Tape Width	Kapton Tape
00-9159-004-651-906	2 x 2	7.0	5.0	1.5	4.8	24	YES
00-9159-004-653-906							NO
00-9159-006-651-906	2 x 3	9.0	7.0	2.5	6.8	24	YES
00-9159-006-653-906							NO
00-9159-008-651-906	2 x 4	11.0	9.0	3.5	8.8	24	YES
00-9159-008-653-906							NO
00-9159-010-651-906	2 x 5	13.0	11.0	4.5	10.8	32	YES
00-9159-010-653-906							NO
00-9159-012-651-906	2 x 6	15.0	13.0	5.5	12.8	32	YES
00-9159-012-653-906							NO



Vertical Dual Row Top Entry Card Edge

9159-650



NOTES:

1. FOR FURTHER DETAILS, REFER TO KYOCERA AVX SPECIFICATION 20-01-226 AND APPLICATION NOTES 201-01-227.
2. HOUSING MATERIAL: GLASS-FILLED, HIGH TEMPERATURE NYLON; FLAME RETARDANT PER UL94V-0; COLOR: NATURAL.
3. CONTACT MATERIAL: HIGH STRENGTH COPPER ALLOY.
4. CONTACT PLATING: NICKEL UNDERPLATE ALL OVER; GOLD FLASH IN CONTACT AREA; LEAD-FREE MATTE TIN ON TAILS.
5. CONTACT TAIL CO-PLANARITY TO BE WITHIN 0.10 mm.
6. MATING PCB THICKNESS TO INCLUDE COPPER AND PLATING.
7. UL APPROVED (US AND CANADA) UL REFERENCE E90723.

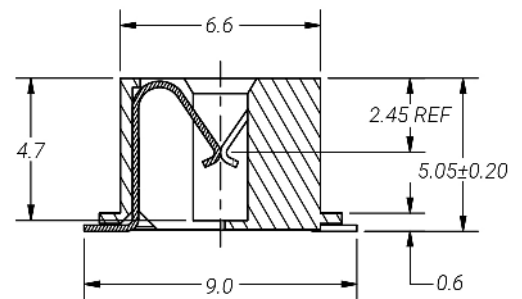
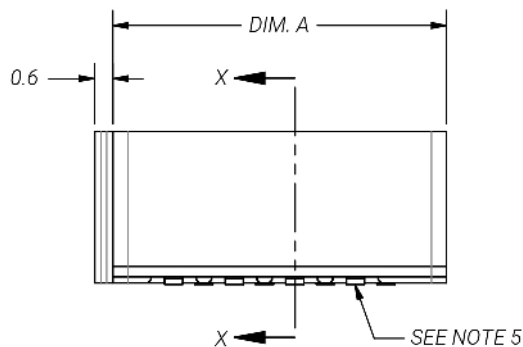
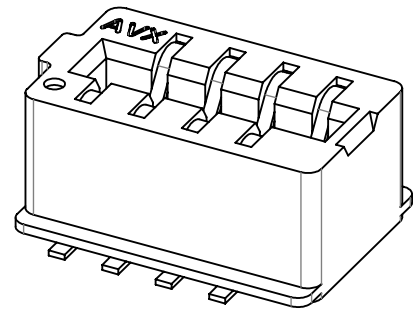
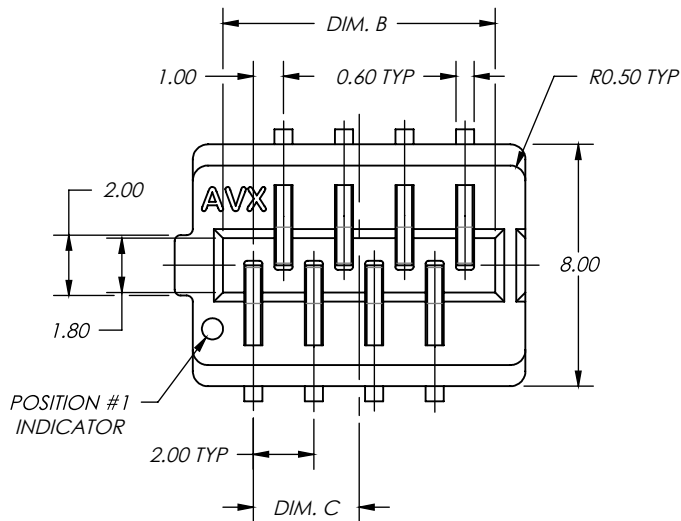
Vertical Dual Row Top Entry Card Edge

9159-650

00 9159 0XX 65X 916

DIMENSIONS

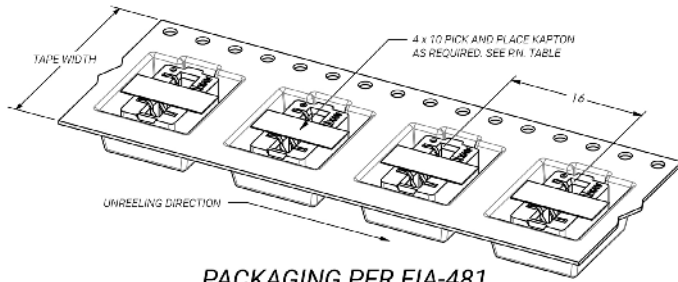
Part Number	Size	Dim. A	Dim. B	Dim. C	Dim. D	Tape Width	Kapton Tape
00-9159-004-651-916	2 x 2	7.0	5.0	1.5	4.8	24	YES
NO							
00-9159-006-651-916	2 x 3	9.0	7.0	2.5	6.8	24	YES
00-9159-006-653-916							NO
00-9159-008-651-916	2 x 4	11.0	9.0	3.5	8.8	24	YES
00-9159-008-653-916							NO
00-9159-010-651-916	2 x 5	13.0	11.0	4.5	10.8	32	YES
00-9159-010-653-916							NO
00-9159-012-651-916	2 x 6	15.0	13.0	5.5	12.8	32	YES
00-9159-012-653-916							NO



SECTION X-X

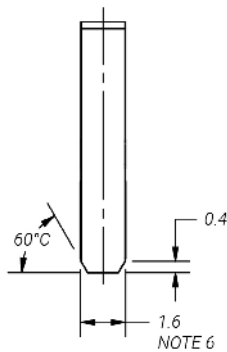
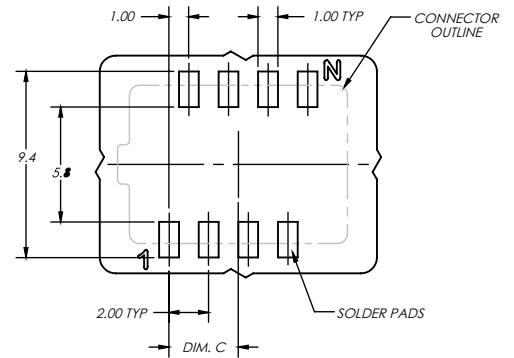
Vertical Dual Row Top Entry Card Edge

9159-650

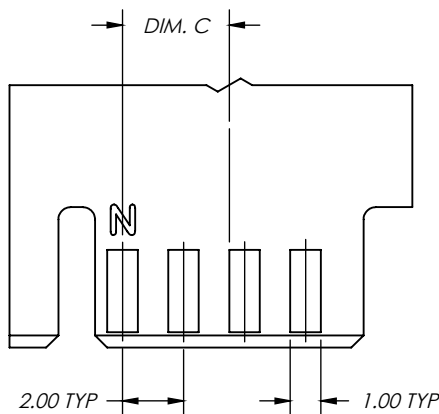
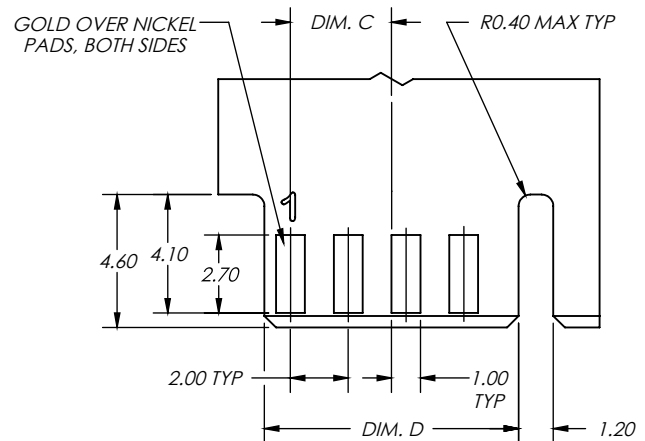


PACKAGING PER EIA-481
700 PARTS PER 330 mm REEL

RECOMMENDED PC BOARD LAYOUT



RECOMMENDED MATING
PC BOARD LAYOUT



NOTES:

1. FOR FURTHER DETAILS, REFER TO KYOCERA AVX SPECIFICATION 201-01-226 AND APPLICATION NOTES 201-01-227.
2. HOUSING MATERIAL: GLASS-FILLED, HIGH TEMPERATURE NYLON; FLAME RETARDANT PER UL94V-0; COLOR: NATURAL.
3. CONTACT MATERIAL: HIGH STRENGTH COPPER ALLOY.
4. CONTACT PLATING: NICKEL UNDERPLATE ALL OVER; GOLD FLASH IN CONTACT AREA; LEAD-FREE MATTE TIN ON TAILS.
5. CONTACT TAIL CO-PLANARITY TO BE WITHIN 0.10 mm.
6. MATING PCB THICKNESS TO INCLUDE COPPER AND PLATING.
7. UL APPROVED (US AND CANADA); UL REFERENCE E90723.

Dual Row Inverted Thru Board Card Edge

9159-600



GENERAL DESCRIPTION

KYOCERA AVX Interconnect continues to develop unique connectors to fill the gap in the market. The newest addition to KYOCERA AVX's broadening line of one piece card edge connectors is the 4p-12p Dual Row Inverted version 9159-650, which is extension of popular single row version 9159-500. This new configuration with staggered dual row contacts will allow doubled number of positions in similar size of the connector.

This small connector is packed with several key features that provide significant functionality in a broad range of applications. The proven contact system is gold plated for enhanced reliability, signal integrity and full 2.5A/contact current rating. The connector is designed for mating PCB board with 1.6mm thickness and

gold plated pads.

APPLICATIONS

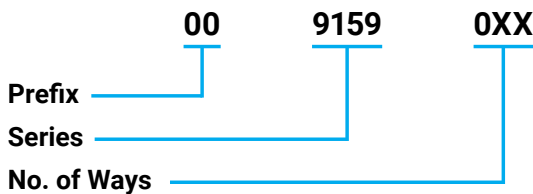
Provides a one piece connector solution for perpendicular PCB mating in applications:

- Automotive
- Industrial
- Lighting

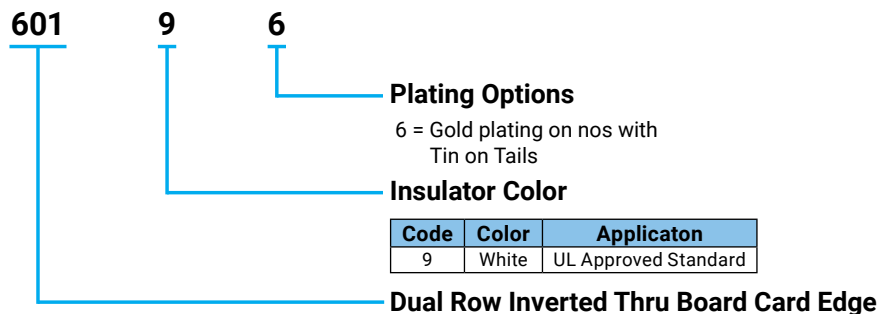
FEATURES AND BENEFITS

- 2.5 Amps per contact current rating meets robust application requirements
- Doubled number of positions with dual row solution
- Gold plated BeCu contact system for high reliability in harsh environments
- Low profile thru board design does not interfere with Led's etc.

HOW TO ORDER



Code	Size	Contact
004	2x2	4
006	2x3	6
008	2x4	8
010	2x5	10
012	2x6	12



ELECTRICAL

Current Rating	2.5 Amps / Contact
Voltage Rating	300 VAC

ENVIRONMENTAL

Operating Temperature	-40°C to +125°C
-----------------------	-----------------

MECHANICAL

Insulator Material	High temperature Nylon UL94V-0 rated
Contact Material	Beryllium Copper
Durability	10 Cycles
Plating	Gold / Tin over Nickel

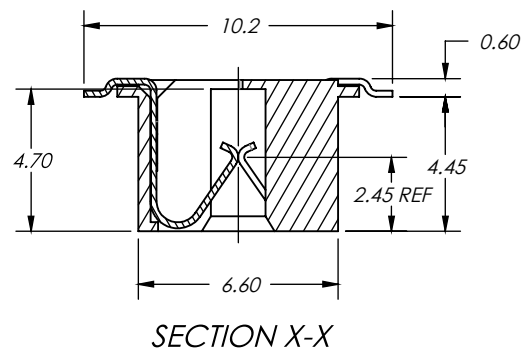
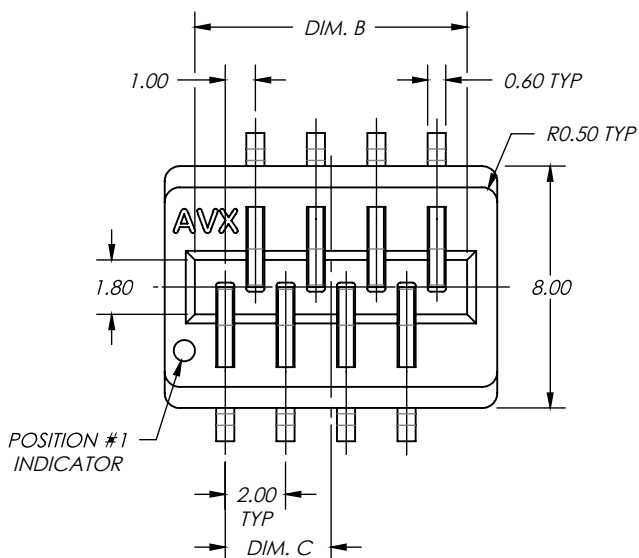
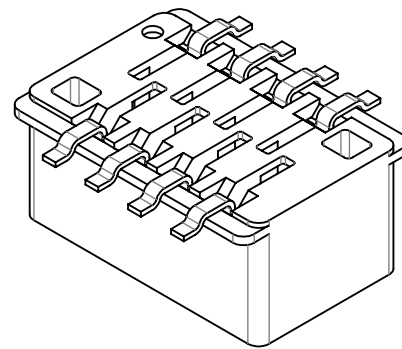
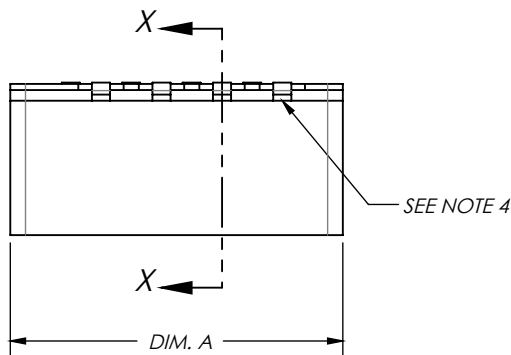
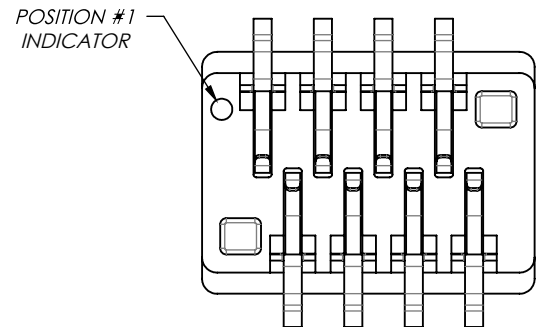
Dual Row Inverted Thru Board Card Edge

9159-600

00 9159 0XX 601 906

DIMENSIONS

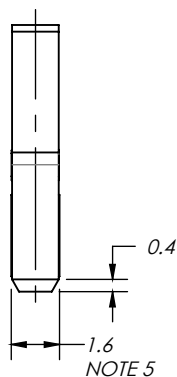
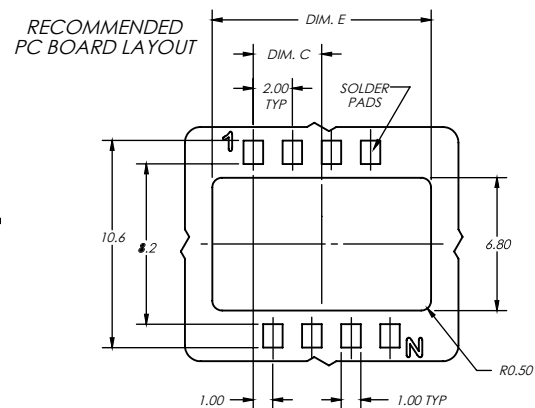
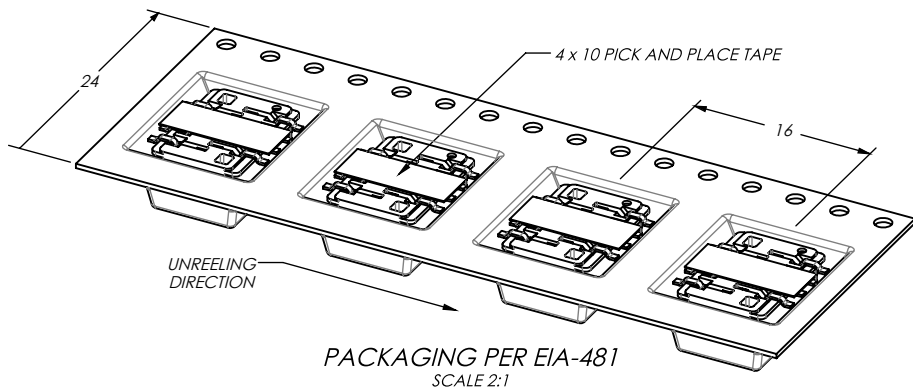
Part Number	Size	Dim. A	Dim. B	Dim. C	Dim. D	Dim. E
00-9159-004-601-906	2 x 2	7.00	5.00	1.50	4.80	7.20
00-9159-006-601-906	2 x 3	9.00	7.00	2.50	6.80	9.20
00-9159-008-601-906	2 x 4	11.00	9.00	3.50	8.80	11.20
00-9159-010-601-906	2 x 5	13.00	11.00	4.50	10.80	13.20
00-9159-012-601-906	2 x 6	15.00	13.00	5.50	12.80	15.20



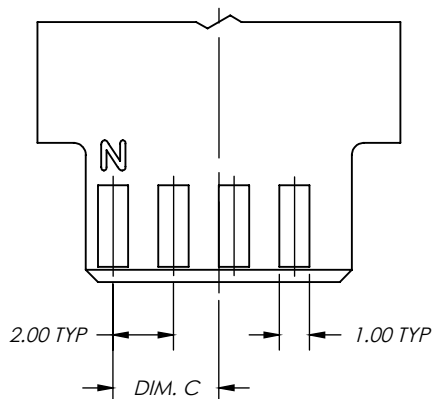
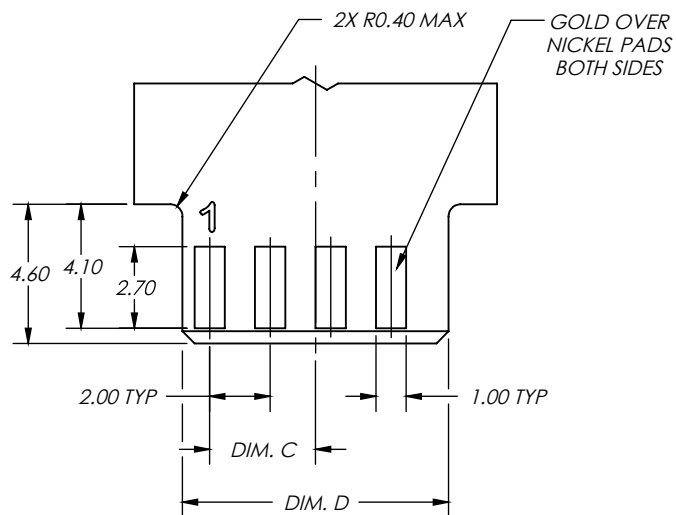
Dual Row Inverted Thru Board Card Edge

9159-600

00 9159 0XX 601 906



RECOMMENDED MATING
PC BOARD LAYOUT



NOTES:

1. HOUSING MATERIAL: GLASS-FILLED, HIGH TEMPERATURE NYLON; FLAME RETARDANT PER UL94V-0; COLOR: NATURAL.
2. CONTACT MATERIAL: HIGH STRENGTH COPPER ALLOY.
3. CONTACT PLATING: NICKEL UNDERPLATE ALL OVER; GOLD FLASH IN CONTACT AREA; LEAD-FREE MATTE TIN ON TAILS.
4. CONTACT TAIL CO-PLANARITY TO BE WITHIN 0.10 mm.
5. MATING PCB THICKNESS TO INCLUDED COPPER AND PLATING.
6. PACKAGING TO BE IN POCKET TAPE ON REELS PER EIA-481 WITH 700 PARTS PER REEL.