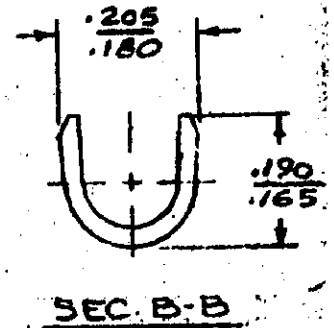
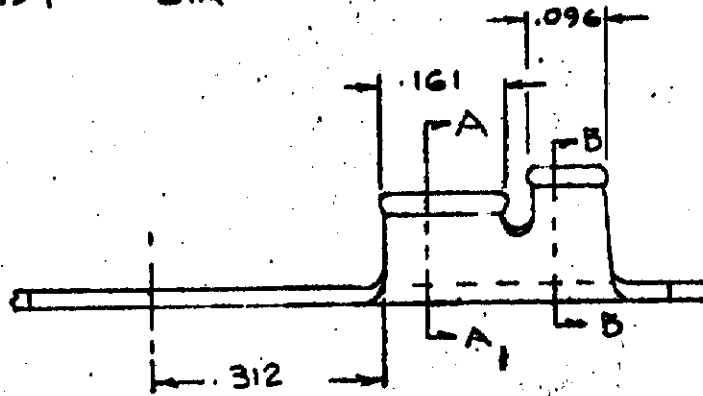
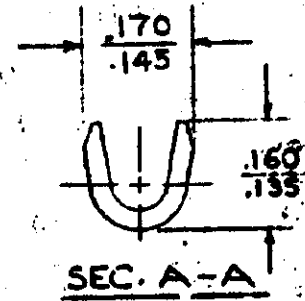
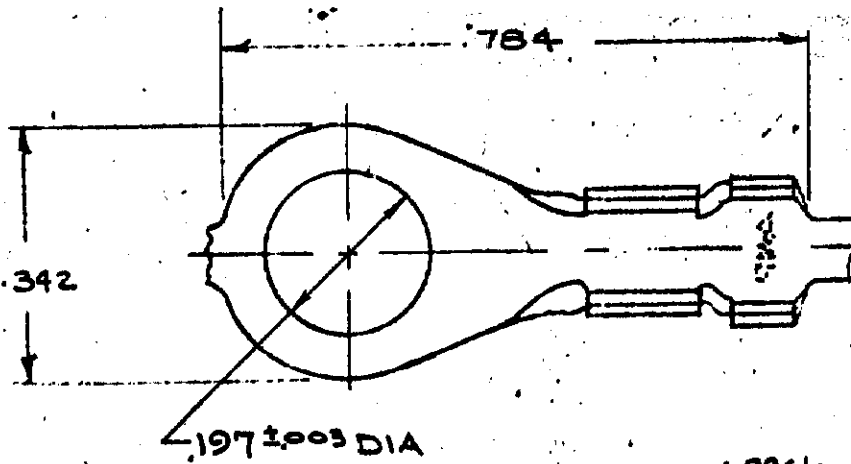


NUMBER 640008

S



CONTINUOUS STRIP, ON REELS

PART NO.
640008-1

DIMENSIONS IN INCHES. DO NOT SCALE PRINT.

UNPUBLISHED COPY NOT TO BE REPRODUCED NOR PUBLISHED WITHOUT WRITTEN PERMISSION OF AMP INCORPORATED.

©1973 BY AMP INCORPORATED. ALL RIGHTS RESERVED. AMP PRODUCTS COVERED BY PATENTS AND/OR PATENTS PENDING.

CUSTOMER COPY REFERENCE ONLY

.030 BRASS



AMP INCORPORATED
HARRISBURG, PENNA.

BRIGHT TIN

CLASS ———

WIRE — RANGE — INSULATION
#20-16 | .100-.140

TYPE ———

A REV PER AF-6785

LTR	REVISION RECORD	ECN	DR	CHK	DATE

TOLERANCE EXCEPT AS NOTED ± .018 ± 1°

LOC A NO 640008 REV A

DR G YETTER 8-9-73

NAME RING

CHK 8-13-73

PRINT LIST