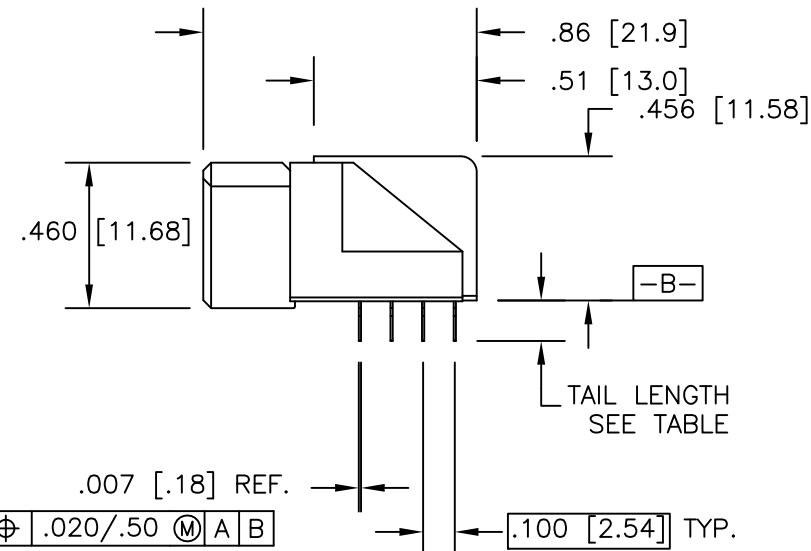
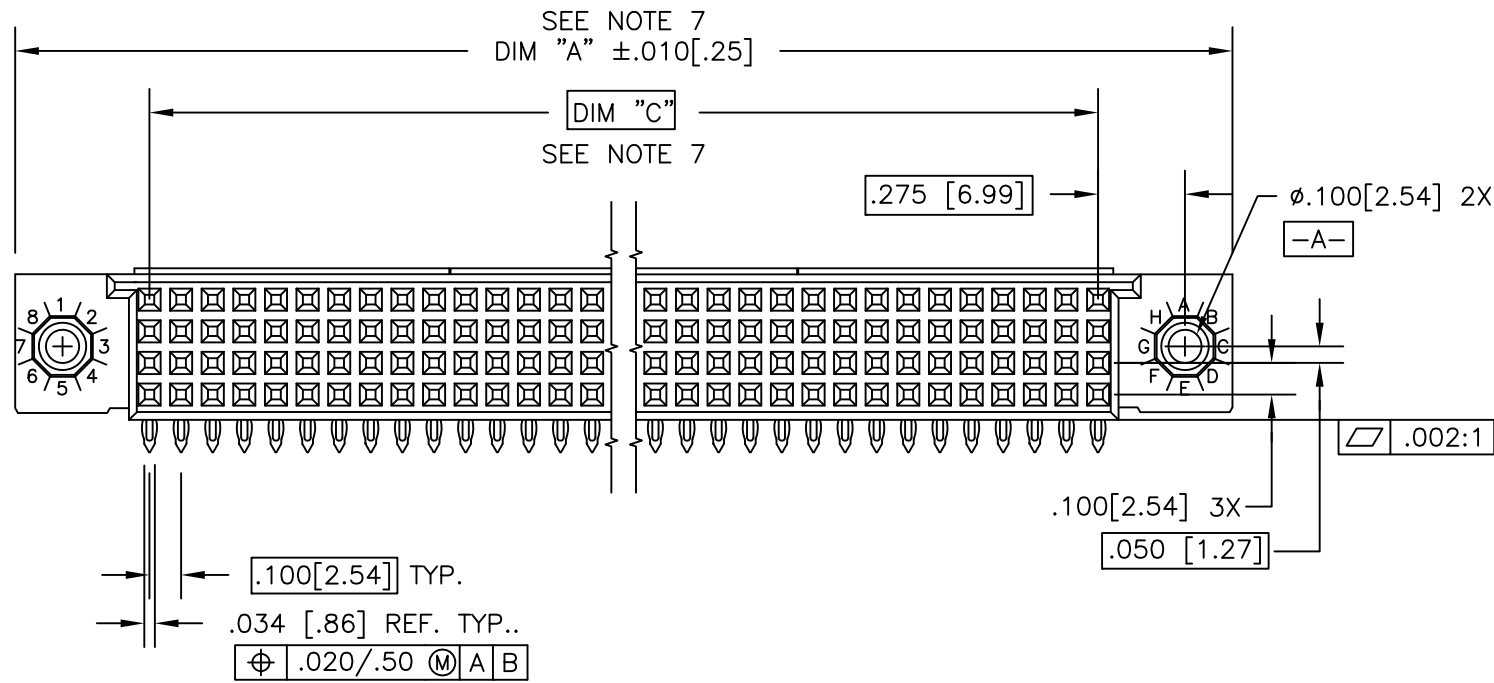
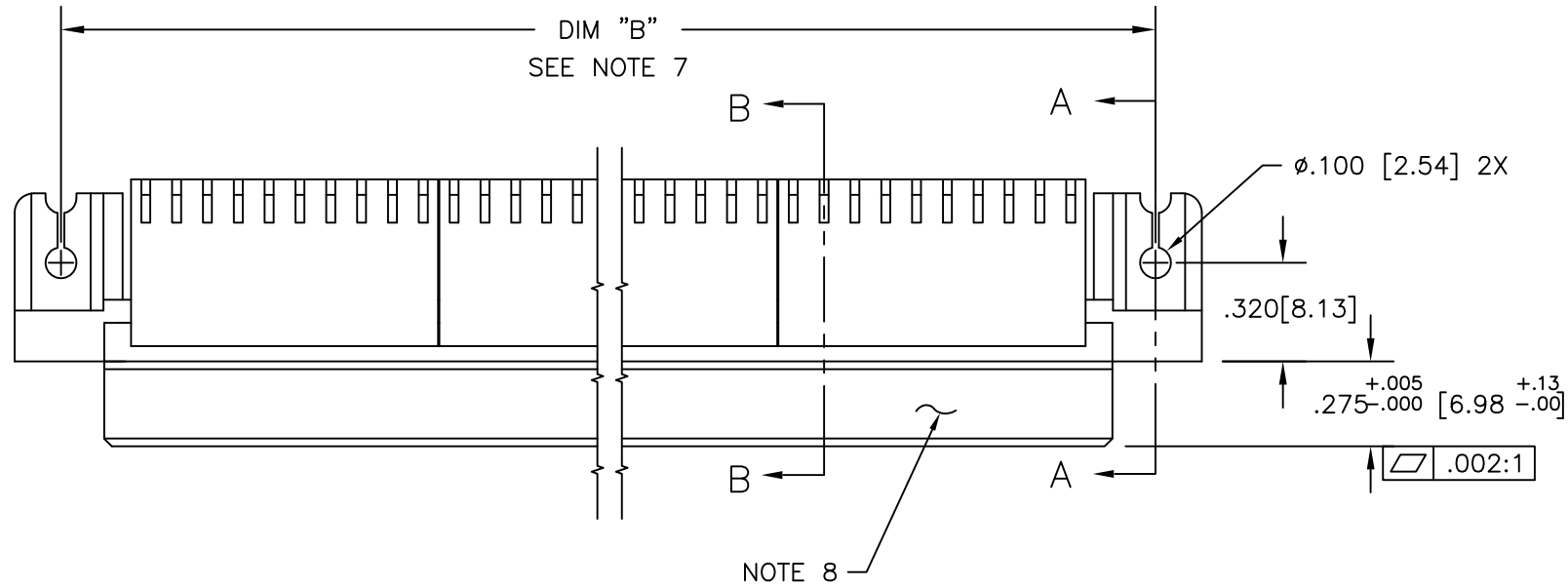


PRODUCT NUMBER
SEE TABLE

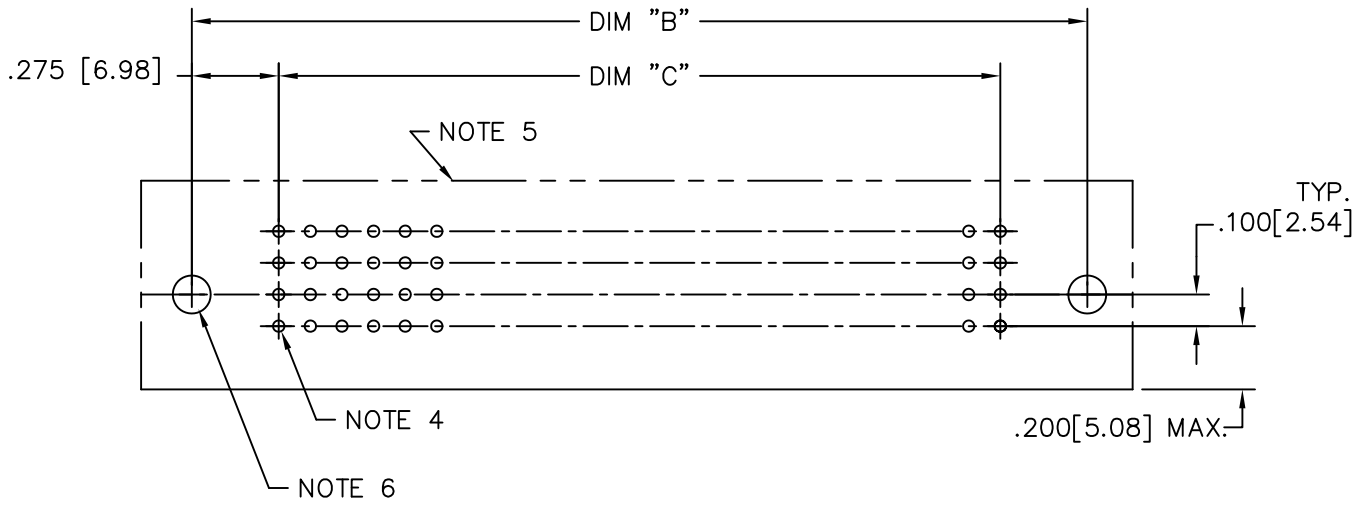
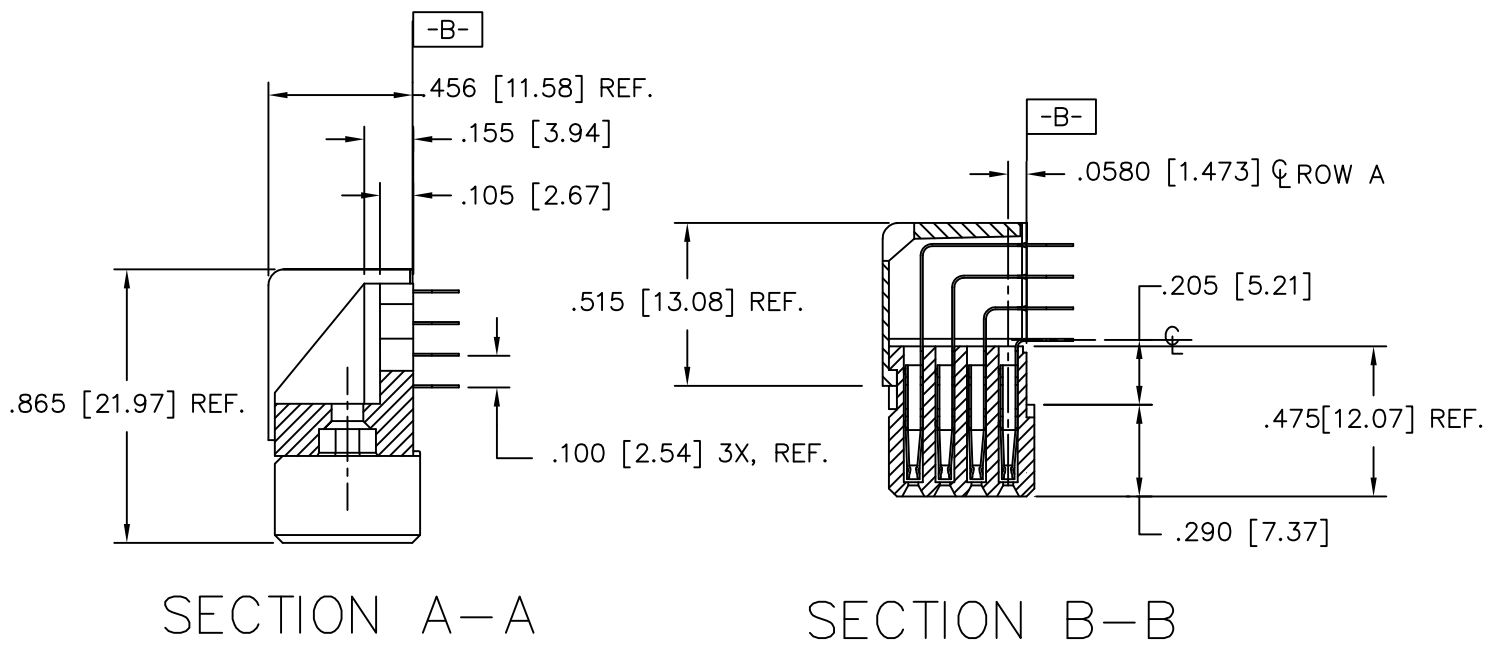


Amphenol
FCi

Copyright AFci

mat'l. code NOTE 3		surface ISO 1302 ✓		tolerance ISO 406 ISO 1101		projection INCH/MM		product family HPC	
ltr	ecn no	dr	date	tolerances unless otherwise specified		scale 1:1		title 4 ROW R/A RECEPTACLE PRESS FIT	
X	ELX-I-26916	MJA	05/04/17	angles	linear			dwg no 50642	
-	-	-	-					sheet 1 of 7 size A3	
S	V05-1003	DAI	11/1/05	0°±2°				type Product Customer Drawing	
T	V05-1041	HTB	11/14/05	dr	D.INGRAM	7/13/05			
U	M06-0255	MHT	7/06/06	enr	D.HORCHLER	7/13/05			
V	M06-0388	MHT	10/04/06	chr	M JACOB	05/04/17			
W	M08-0149	MHT	5/27/08	appd	BIJU K PAUL	05/04/17			
sheet	revision	X	X	W	W	W	W		
index	sheet	1	2	3	4	5	6	7	

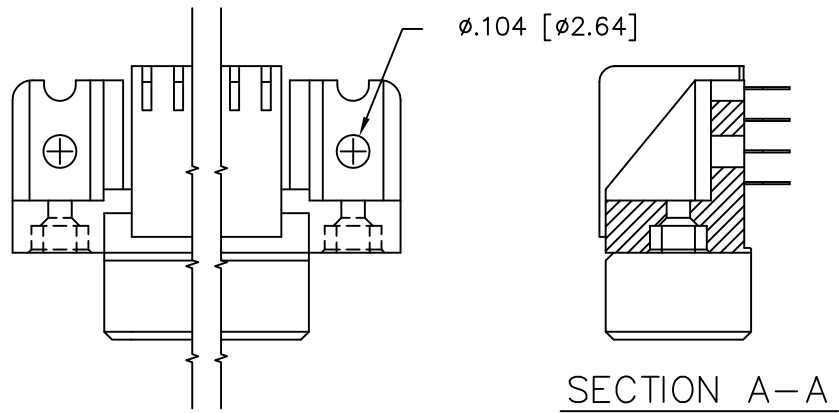
PRODUCT NUMBER
SEE TABLE



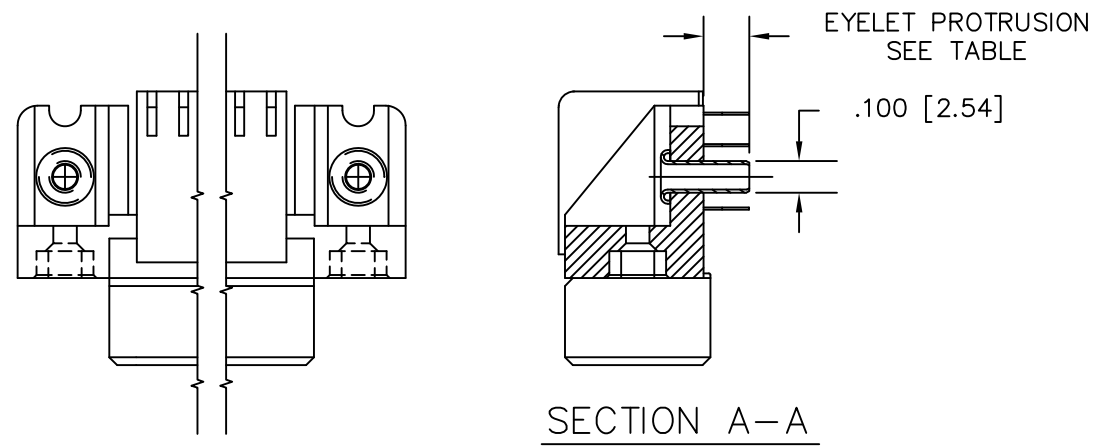
RECOMMENDED PCB LAYOUT
(ALL HOLES LOCATED ON .100[2.54]
GRID UNLESS OTHERWISE SHOWN)

mat'l. code NOTE 3		surface ISO 1302 ✓	tolerance ISO 406 ISO 1101	projection INCH/MM	product family HPC
ltr	ecn no	dr	date	tolerances unless otherwise specified	title 4 ROW R/A RECEPTACLE PRESS FIT
x				linear .XX±.01/.X±0.3	
				angles .XXX±.005/.XX±0.13	
				0°±2° .XXXX±.0020/.XXX±0.051	scale 1:1
		dr	D.INGRAM	7/13/05	Amphenol FCi dwg no 50642 sheet 2 of 7 size A3
		enr	D.HORCHLER	7/13/05	
		chr	M JACOB	05/04/17	
		appd	BIJU K PAUL	05/04/17	
sheet index	revision sheet				type Product Customer Drawing

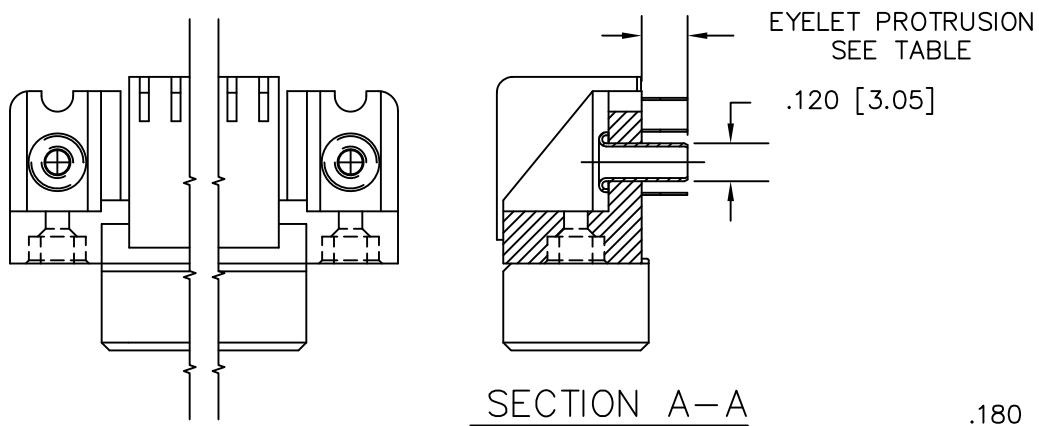
PRODUCT NUMBER
SEE TABLE



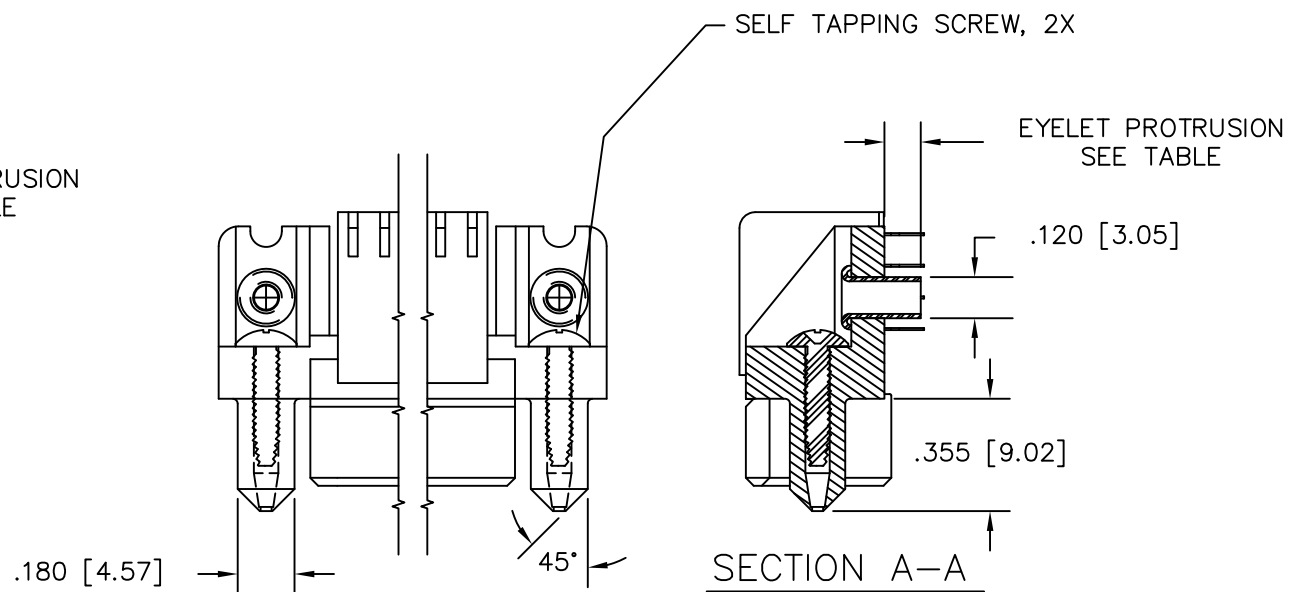
SPECIAL FEATURE OPTION A
SEE NOTE 6



SPECIAL FEATURE OPTION B
SEE NOTE 6



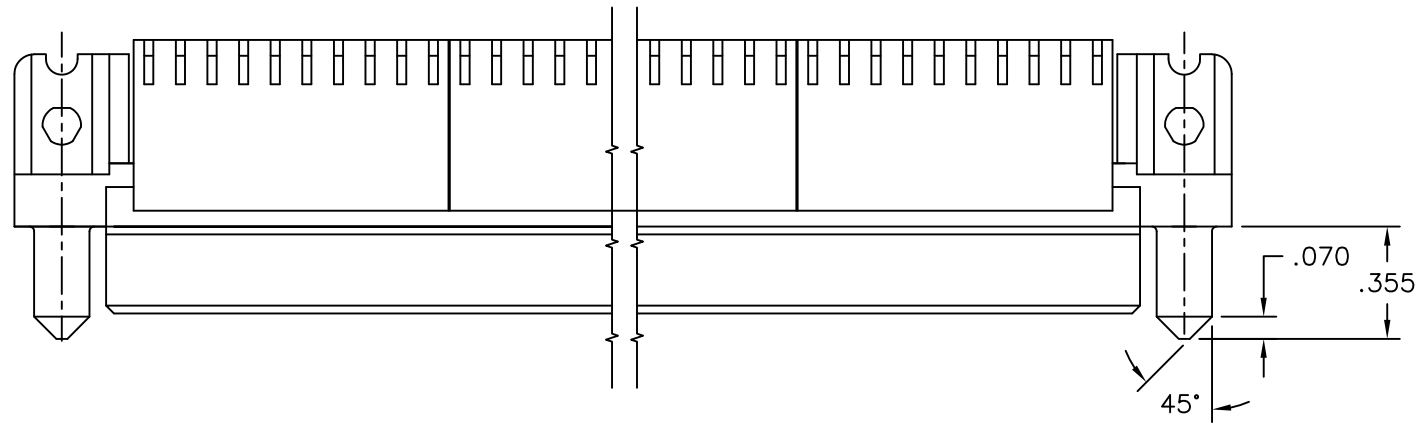
SPECIAL FEATURE OPTION C
SEE NOTE 6



SPECIAL FEATURE OPTION D
SEE NOTE 6

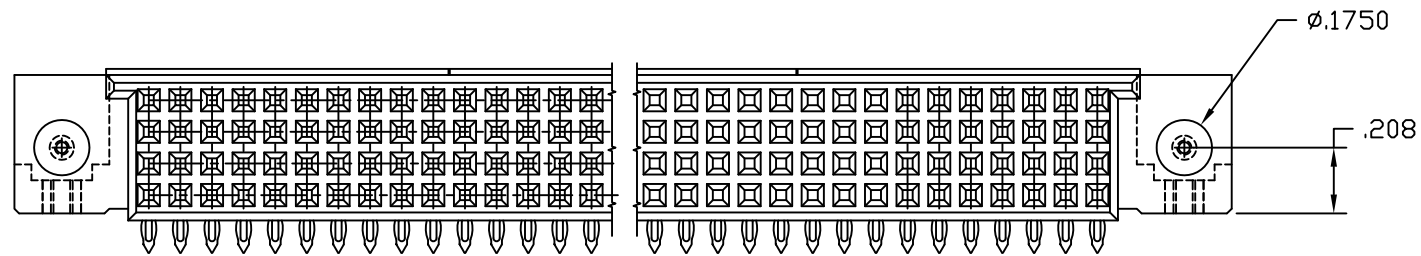
mat'l. code NOTE 3		surface ISO 1302 ✓	tolerance ISO 406 ISO 1101	projection INCH/MM	product family HPC
ltr	ecn no	dr	date	tolerances unless otherwise specified	title 4 ROW R/A RECEPTACLE PRESS FIT
W				angles linear 0°±2°	
				dr D.INGRAM 7/13/05	dwg no 50642
				enr D.HORCHLER 7/13/05	sheet 3 of 7
				chr T.BREWBAKER 7/13/05	size A3
				appd D.HORCHLER 7/13/05	type Product Customer Drawing
sheet index	revision sheet				

PRODUCT NUMBER
SEE TABLE



SPECIAL FEATURE OPTION E

SEE NOTE 6



mat'l. code		surface		tolerance		projection		product family	
NOTE 3		ISO 1302 ✓		ISO 406 ISO 1101				HPC	
ltr	ecn no	dr	date	tolerances unless otherwise specified		INCH/MM		title	
W				angles	linear			4 ROW R/A RECEPTACLE PRESS FIT	
				0°±2°	.XX±.01/.X±0.3 .XXX±.005/.XX±0.13 .XXXX±.0020/.XXX±0.051	scale 1:1		dwg no	
				dr	D.INGRAM	7/13/05			sheet 4 of 7
				enr	D.HORCHLER	7/13/05			size
				chr	T.BREWBAKER	7/13/05			A3
				appd	D.HORCHLER	7/13/05			type
sheet index		revision sheet						Product Customer Drawing	

PRODUCT NUMBER
50642-XX004
50642-XX004LF

SELECT LOAD (50642-XX004 AND 50642-XX004LF ONLY)

60	55	50	45	40	35	31			
				A A A A A A A A		A A A A			
				B		B			
				C C C C C C C C					

30	25	20	15	10	5	1			
A A A A									
B	B								

D
C
B
A

TERM.
1

SPECIAL NOTES FOR -XX004 AND -XX004LF ONLY:

- ALL POSITIONS ARE LOADED, EXCEPT OMITTS AS SHOWN.
- COLUMN 1, ROW A IS DESIGNATED AS SIGNAL TERM. 1, AS VIEWED FROM THE MATING FACE.
- BECAUSE OF THE SELECT LOAD TERMINAL POSITIONS, ONLY 2 PRESS BLOCKS NEED TO BE INSTALLED-ONE PLACED STARTING IN COL. 25(*) AND ENDING IN COL. 34 THE OTHER PLACED STARTING IN COL. 35(*) AND ENDING IN COL.44.
- SIGNAL DATA FOR 50642-XX004 AND -XX004LF:
 SIZE 4 x 60
 TOTAL NO. OF POSITIONS - 240
 NO. OF POSITIONS LOADED - 032

ITEM KEY	QTY.
A	16
B	8
C	8
BLANK	208

mat'l. code		surface		tolerance		projection		product family	
NOTE 3		ISO 1302		ISO 406		INCH/MM		HPC	
						Amphenol FCi		title	
ltr		ecn no		dr		date		4 ROW R/A RECEPTACLE PRESS FIT	
W				angles				dwg no	
				linear		scale 1:1		sheet 5 of 7	
				0°±2°				size	
				D.INGRAM		7/13/05		50642	
				D.HORCHLER		7/13/05		A3	
				T.BREWBAKER		7/13/05		type	
				D.HORCHLER		7/13/05		Product Customer Drawing	
sheet index		revision sheet							

PRODUCT NUMBER	NUMBER OF POSITIONS NOTE 2	TAIL LENGTH	SPECIAL FEATURES SEE NOTE 6	SOLDER TAIL PLATING	CONTACT PLATING	EYELET PROTRUSION	GUIDE PINS
50642-1YYYYE	YYY	.125±.010/3.18±.25	-	TIN LEAD	30u"/.76u Au	N/A	NONE
50642-1YYYYELF	YYY	.125±.010/3.18±.25	-	TIN	30u"/.76u GXT	N/A	NONE
50642-1YYYYEA	YYY	.125±.010/3.18±.25	"A"	TIN LEAD	30u"/.76u Au	N/A	NONE
50642-1YYYYEALF	YYY	.125±.010/3.18±.25	"A"	TIN	30u"/.76u GXT	N/A	NONE
50642-1YYYYEB	YYY	.125±.010/3.18±.25	"B"	TIN LEAD	30u"/.76u Au	.145/3.68	NONE
50642-1YYYYEBLF	YYY	.125±.010/3.18±.25	"B"	TIN	30u"/.76u GXT	.145/3.68	NONE
50642-1YYYYEC	YYY	.125±.010/3.18±.25	"C"	TIN LEAD	30u"/.76u Au	.115/2.92	NONE
50642-1YYYYECLF	YYY	.125±.010/3.18±.25	"C"	TIN	30u"/.76u GXT	.115/2.92	NONE
50642-1YYYYED	YYY	.125±.010/3.18±.25	"D"	TIN LEAD	30u"/.76u Au	.115/2.92	2
50642-1YYYYEDLF	YYY	.125±.010/3.18±.25	"D"	TIN	30u"/.76u GXT	.115/2.92	2
50642-1YYYYEE	YYY	.125±.010/3.18±.25	"E"	TIN LEAD	30u"/.76u Au	N/A	2
50642-1YYYYEELF	YYY	.125±.010/3.18±.25	"E"	TIN	30u"/.76u GXT	N/A	2
50642-1YYYYF	YYY	.145±.010/3.68±.25	-	TIN LEAD	30u"/.76u Au	N/A	NONE
50642-1YYYYFLF	YYY	.145±.010/3.68±.25	-	TIN	30u"/.76u GXT	N/A	NONE
50642-1YYYYFA	YYY	.145±.010/3.68±.25	"A"	TIN LEAD	30u"/.76u Au	N/A	NONE
50642-1YYYYFALF	YYY	.145±.010/3.68±.25	"A"	TIN	30u"/.76u GXT	N/A	NONE
50642-1YYYYFC	YYY	.145±.010/3.68±.25	"C"	TIN LEAD	30u"/.76u Au	.145/3.68	NONE
50642-1YYYYFCLF	YYY	.145±.010/3.68±.25	"C"	TIN	30u"/.76u GXT	.145/3.68	NONE
50642-1YYYYFD	YYY	.145±.010/3.68±.25	"D"	TIN LEAD	30u"/.76u Au	.145/3.68	2
50642-1YYYYFDLF	YYY	.145±.010/3.68±.25	"D"	TIN	30u"/.76u GXT	.145/3.68	2
50642-1YYYYFE	YYY	.145±.010/3.68±.25	"E"	TIN LEAD	30u"/.76u Au	N/A	2
50642-1YYYYFELF	YYY	.145±.010/3.68±.25	"E"	TIN	30u"/.76u GXT	N/A	2
50642-XX004	240	.125±.010/3.18±.25	SEE SHEET 5	TIN LEAD	30u"/.76u Au	N/A	NONE
50642-XX004LF	240	.125±.010/3.18±.25	SEE SHEET 5	TIN	30u"/.76u GXT	N/A	NONE

Amphenol
FCi

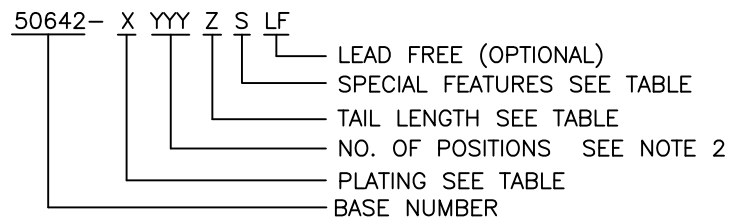
Copyright AFci

mat'l. code NOTE 3				surface ISO 1302 ✓		tolerance ISO 406 ISO 1101		projection 		product family HPC			
ltr	ecn no	dr	date	tolerances unless otherwise specified						title			
w				angles		linear		INCH/MM		4 ROW R/A RECEPTACLE PRESS FIT			
				0°±2°		.XX±.01/.X±0.3 .XXX±.005/.XX±0.13 .XXXX±.0020/.XXX±0.051		scale 1:1		dwg no 50642			
				dr	D.INGRAM	7/13/05			sheet 6 of 7		size A3		
				enr	D.HORCHLER	7/13/05			type Product Customer Drawing				
				chr	T.BREWBAKER	7/13/05							
				appd	D.HORCHLER	7/13/05							
sheet index	revision sheet												

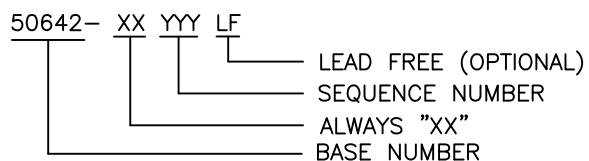
PRODUCT NUMBER
SEE TABLE

NOTES:

①. PRODUCT NUMBERING CODE



PRODUCT NUMBERING CODE FOR SELECT LOAD



- ②. THIS PRODUCT IS CONFIGURED IN SIZES OF 6 THRU 80 COLUMNS IN INCREMENTS OF ONE, i.e. 6, 7, 8, 9,79, 80.
- ③. MATERIAL: PRESS BLOCK – HIGH TEMP THERMOPLASTIC;
HOUSING–GLASS AND MINERAL FILLED HIGH TEMPERATURE THERMOPLASTIC, FLAME RETARDANT PER UL94V–O. COLOR–BLACK
CONTACT–BeCu
- ④. DRILLED HOLE DIA OF .0453±.001 INCH FINISHED TO .0400±.0030 INCH BY PLATING SnPb OR OTHER PLATING 0.0003 TO 0.0006 INCHES THICK WITH A COPPER UNDERPLATE AS NEEDED.
- ⑤. INFORMATION DOCUMENT: FOR PCB STAY– AWAY ZONE, SEE TA–0954.
- ⑥. SPECIAL FEATURES (SEE PRODUCT NUMBER TABLE, AND DETIALS ON SHEET 3)
- IF NO SPECIAL FEATURE CODE IS SELECTED, PCB MOUNTING HOLE DIMENSION TO BE $\phi.120\pm.003[3.05\pm0.07]$
 - "A" PCB MOUNTING HOLE DIMENSION TO BE $\phi.100\pm.003[2.54\pm0.07]$
 - "B" INCLUDES PRE–INSTALLED EYELETS FOR PCB ATTACHMENT IN A $\phi.100\pm.003[2.54\pm0.07]$ MOUNTING HOLE. (E TAIL ONLY)
 - "C" INCLUDES PRE–INSTALLED EYELETS FOR PCB ATTACHMENT IN A $\phi.120\pm.003[3.05\pm0.07]$ MOUNTING HOLE.
 - "D" INCLUDES PRE–INSTALLED EYELETS WITH MOLDED GUIDE PINS FOR PCB ATTACHMENT IN A $\phi.120\pm.003[3.05\pm0.07]$ MOUNTING HOLE.
 - "E" INCLUDES MOLDED GUIDE PINS WITH TRI–HOLE SHAPED MOUNTING HOLES. (EYELETS NOT INSTALLED)
- ⑦. LENGTH CALCULATIONS:
DIMENSION "A" CALCULATION = $.100 [2.54] \times \text{NO. OF COLUMNS} + .75 [19.1]$
DIMENSION "B" CALCULATION = $.100 [2.54] \times \text{NO. OF COLUMNS} + .450 [11.43]$
DIMENSION "C" CALCULATION = $.100 [2.54] \times \text{NO. OF COLUMNS} - .100 [2.54]$
- ⑧. MANUFACTURE'S LOGO, PN, AND LOT CODE TO APPEAR ON THIS SURFACE.
9. THIS PRODUCT (WITH "LF" SUFFIX) MEETS EUROPEAN UNION DIRECTIVES AND OTHER COUNTRY REGULATIONS AS DESCRIBED IN GS–22–008.
10. THIS HOUSING WILL WITHSTAND EXPOSURE TO 260°C PEAK TEMPERATURE FOR 10–30 SECONDS IN A CONVECTION, INFRA–RED OR VAPOR PHASE REFLOW OVEN.
11. ALL POSITIONS ARE LOADED EXCEPT FOR –XXYYY ASSEMBLIES WHICH HAVE SELECTIVE LOADING.

mat'l. code NOTE 3				surface ISO 1302 <input checked="" type="checkbox"/>		tolerance ISO 406 ISO 1101		projection 		product family HPC			
ltr	ecn no	dr	date	tolerances unless otherwise specified						title			
W				angles	linear	.XX±.01/.X±0.3		INCH/MM		4 ROW R/A RECEPTACLE PRESS FIT			
						.XXX±.005/.XX±0.13							
				0°±2°		.XXXX±.0020/.XXX±0.051							
				dr	D.INGRAM	7/13/05		Amphenol FCi		dwg no		sheet 7 of 7	size
				enr	D.HORCHLER	7/13/05				50642		A3	
				chr	T.BREWBAKER	7/13/05				Product Customer Drawing			
				appd	D.HORCHLER	7/13/05							
sheet index		revision sheet											