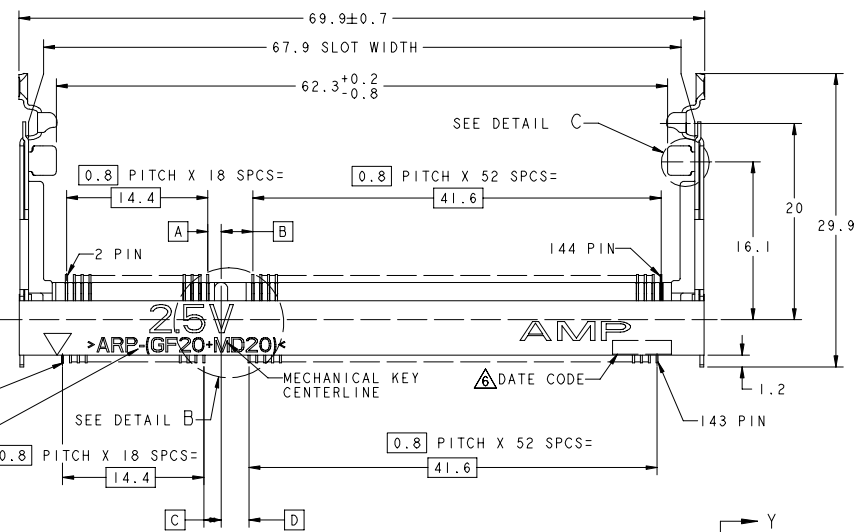
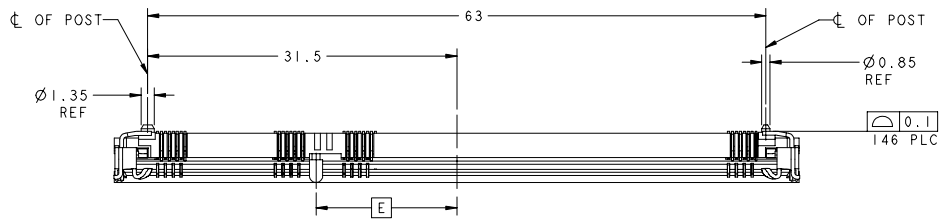
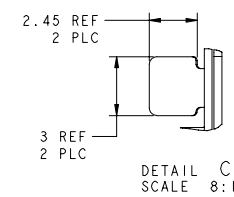
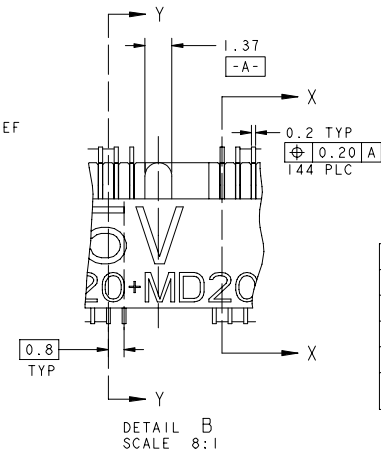
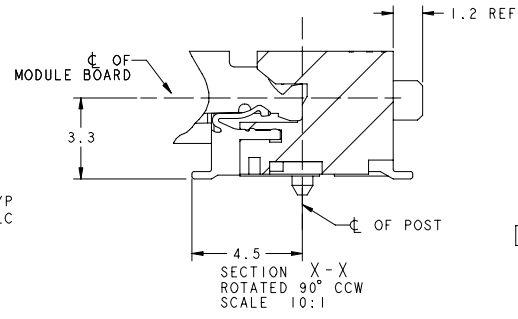
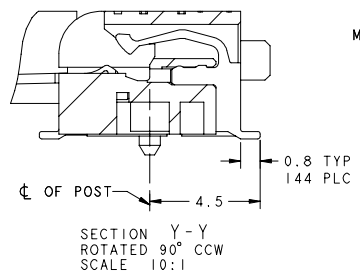
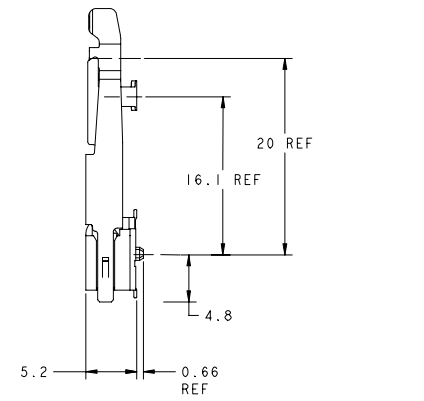


REVIS		REVISIONS	
NO	DATE	DESCRIPTION	BY
A3		REVISED PER ECR-22-128878	



- △ MATERIAL:
HOUSING: HIGH TEMPERATURE PLASTIC, UL94V-0, NAT.
CONTACT: COPPER ALLOY
LATCH: SUS301 STAINLESS STEEL
- △ FINISH:
CONTACT AREA: 0.00025 MIN GOLD ON
0.001 MIN ALL OVER NICKEL
SOLDERING AREA: 0.00005 MIN TO 0.00030 MAX GOLD.
LATCH: TIN.
- 3. TOLERANCES NON-ACCUMULATIVE.
- △ PART PACKAGED IN TAPE & REEL AS PER EIA-18754 STANDARD.
REEL DIAMETER SHALL BE 330mm, AND
TAPE WIDTH SHALL BE 88mm, AND
TAPE PITCH SHALL BE 36mm.
- 5. COMPLIES WITH JEDEC SOCKET OUTLINE SO-008.
- △ DATE CODE (4-DIGITS), LOCATED AS SHOWN.
TO BE INTERPRETED AS FOLLOWS:
DIGIT # 1 - LAST DIGIT OF YEAR.
DIGITS # 2 AND # 3 - CALENDAR WEEK.
DIGIT # 4 - DAY OF THE WEEK (WITH SUNDAYS AS DAY 1).

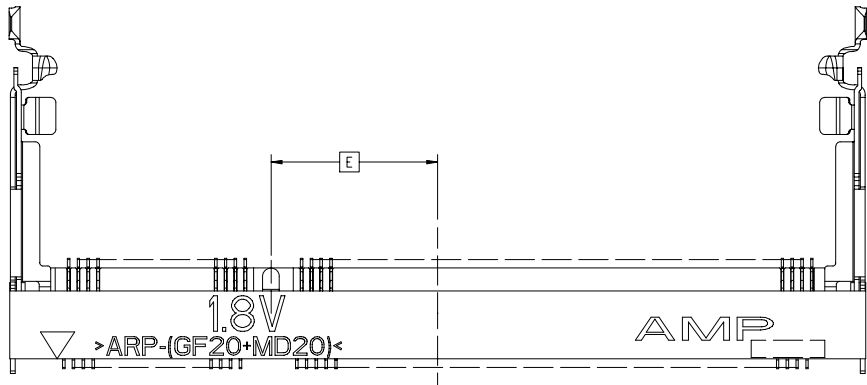


X-1735251-1 AS SHOWN

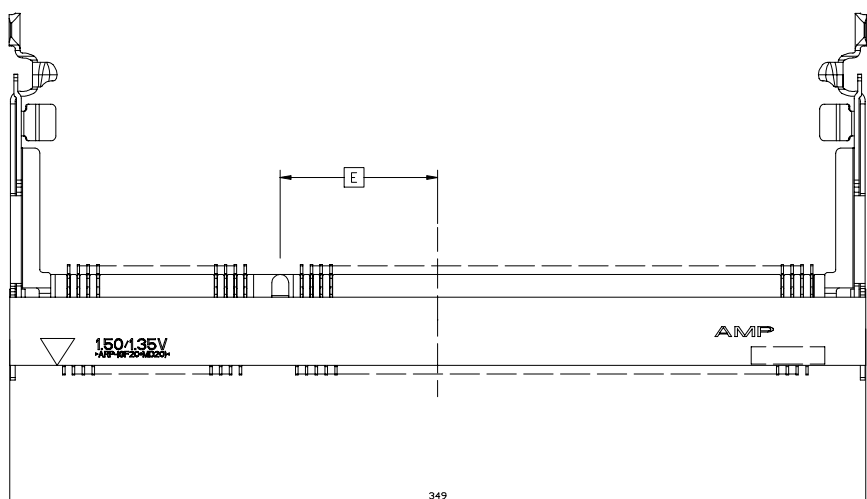
TAPE & REEL	12.85	1.35	3.25	1.75	2.85	AC	144	1-1735251-3
TAPE & REEL	13.60	2.10	2.5	2.5	2.10	1.50/1.35V (DDR3)	144	1-1735251-2
SOFT TRAY	12.85	1.35	3.25	1.75	2.85	1.8V (DDR2)	144	1735251-3
SOFT TRAY	13.60	2.10	2.5	2.5	2.10	1.50/1.35V (DDR3)	144	1735251-2
SOFT TRAY	14.35	2.85	1.75	3.25	1.35	1.8V (DDR2)	144	1735251-1
PACKAGING	DIM E	DIM D	DIM C	DIM B	DIM A	2.5V (DDR1)	144	1735251-1
						VARIATION VOLTAGE (DDR TYPE)	POS	PART NUMBER

SIN DIMENSIONS: mm		DIMENSIONS: INCHES		DATE: 108-1739		SCALE: 2:1	
MATERIAL: △		FINISH: △		REVISION: A1		CUSTOMER DRAWING	
DRAWING NO: 1735251-1		SHEET: 1 OF 3		DATE: 00779		SCALE: 2:1	

REVISES		REVISIONS				
LOC	BY	DATE	DESCRIPTION	DATE	BY	APP
DY	-	-	SEE SHEET 1	-	-	-



X-1735251-2 AS SHOWN

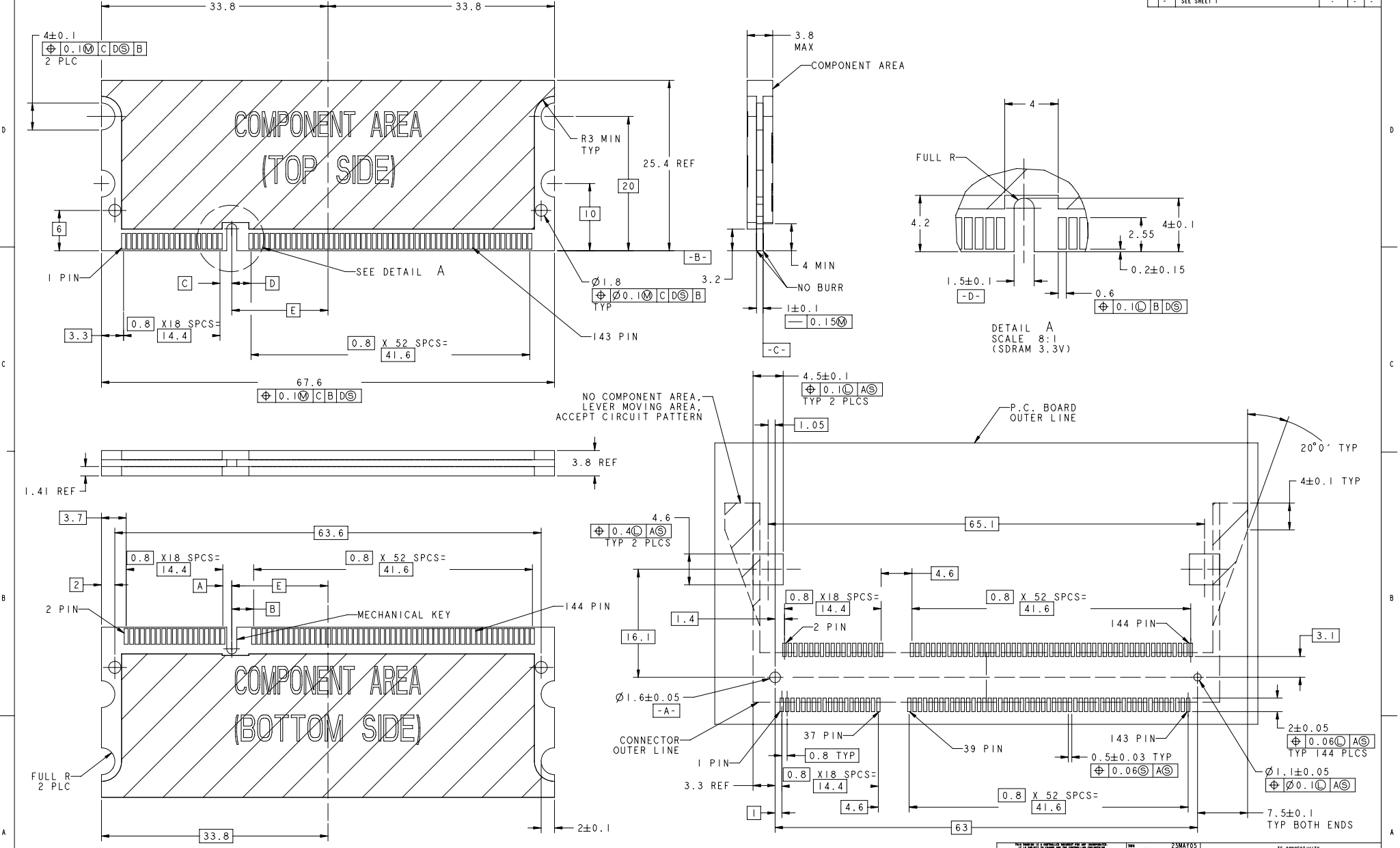


X-1735251-3 AS SHOWN

349

<small>THIS DRAWING IS UNPUBLISHED. RELEASED FOR PUBLICATION. ALL RIGHTS RESERVED. BY AMP INCORPORATED.</small>		DESIGNED BY: MYLEE ZSMATOS CHECKED BY: Y. J. SEE	TE CONNECTIVITY Singapore
DIMENSIONS: mm DIMENSIONS IN PARENTHESES ARE IN MILLIMETERS. UNLESS OTHERWISE SPECIFIED.	DIMENSIONS: mm DIMENSIONS IN PARENTHESES ARE IN MILLIMETERS. UNLESS OTHERWISE SPECIFIED.	SPEC: SE LEONG DRAWING SPEC: 108-1739 APPLICATION SPEC: 114-1114 REVISION: -	NAME: S.O. DIMM SOCKET, 0.8mm PITCH, 144 POSITION, STD PROFILE SIZE: A1 CASE CODE: 00779 DRAWING NO: ©-1735251
MATERIAL:	FINISH:	CUSTOMER DRAWING	SCALE: 2:1 SHEET 2 OF 3 REV A3

LIC		REVISONS	
DY	DATE	DESCRIPTION	DATE
-	-	SEE SHEET 1	-



NO COMPONENT AREA, LEVER MOVING AREA, ACCEPT CIRCUIT PATTERN

RECOMMENDED P.C. BOARD PATTERN LAYOUT (CONNECTOR MOUNTING SIDE)

THIS DRAWING IS UNPUBLISHED. RELEASED FOR PUBLICATION BY AMP INCORPORATED. ALL RIGHTS RESERVED.		DESIGNED BY: MYLEE DRAWN BY: J. SEE	CHECKED BY: ZSMATOS
DIMENSIONS: mm	DIMENSIONS UNLESS OTHERWISE SPECIFIED:	DATE: 108-1739	TITLE: S.O. DIMM SOCKET, 0.8mm PITCH, 144 POSITION, STD PROFILE
MATERIAL:	FINISH:	APPLICATION SPEC: I14-1114	CASE CODE: A1 DRAWING NO: 00779 SCALE: 2:1
CUSTOMER DRAWING		DRAWING NO: 1735251 SHEET 3 OF 3	