

# High Frequency Ceramic Solutions

## 5.3GHz Directional Coupler/ Low Pass Filter Combo Passive

P/N 5300CF15A0950

Detail Specification: 11/29/2018

Page 1 of 4

### General Specifications

Part Number	5300CF15A0950	Impedance	50 Ω
Frequency (MHz)	4900 - 5850	Operating Temperature	-40 to +85°C
Insertion Loss	0.8 dB max.	Recommended Storage Condition for Un-used T&R	+5 to +35°C Humidity 45~75%RH 18 months max.
Return Loss	20 dB min.		
Attenuation (min.)	20 dB @ 2 x Fo		
Coupling	15 ± 1 dB	Reel Quantity	4000
Isolation	22 dB min.	Power Rating	2W max. (CW)

P/N	Packaging Style	Bulk	Suffix = S	Eg. 5300CF15A0950S
		T & R	Suffix = E	Eg. 5300CF15A0950E
Suffix	Termination Style	100% Tin	Suffix = None	Eg. 5300CF15A0950(E or S)
Evaluation Board (2-Port SMA EVB)		5300CF15A0950-EB2SMA		

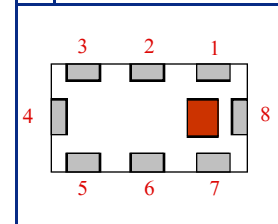
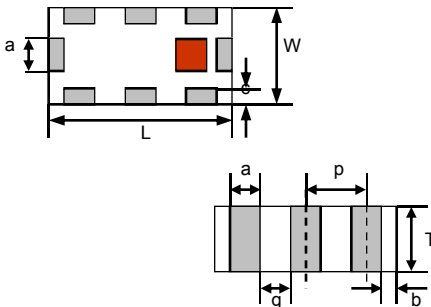
\*<https://www.johansontechnology.com/tape-reel-packaging>

### Terminal Configuration

No.	Function
1	Termination
2	GND
3	GND
4	Input
5	Coupled Out
6	GND
7	GND
8	Output

### Mechanical Dimensions

	In	mm
L	0.079 ± 0.004	2.00 ± 0.10
W	0.049 ± 0.004	1.25 ± 0.10
T	0.027 ± 0.004	0.70 ± 0.10
a	0.012 ± 0.004	0.30 ± 0.10
b	0.008 ± 0.004	0.20 ± 0.10
c	0.012 +0.004/-0.008	0.30 +0.1/-0.2
g	0.014 ± 0.004	0.35 ± 0.10
p	0.026 ± 0.002	0.65 ± 0.05



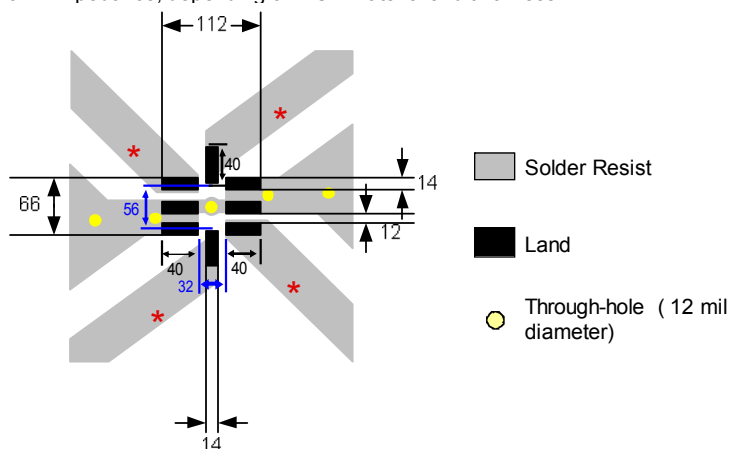
### Mounting Considerations

Mount these devices with brown mark facing up.

Line width should be designed to provide 50 ohm impedance, depending on PCB material and thickness

Units: mils

\* Line width should be designed to provide 50 ohm impedance, depending on PCB material and thickness



Johanson Technology, Inc. reserves the right to make design changes without notice.

All sales are subject to Johanson Technology, Inc. terms and conditions.



<https://www.johansontechnology.com>  
4001 Calle Tecate • Camarillo, CA 93012 • TEL 805.389.1166 FAX 805.389.1821

Ver. 2.0

2018 Johanson Technology, Inc. All Rights Reserved

# High Frequency Ceramic Solutions

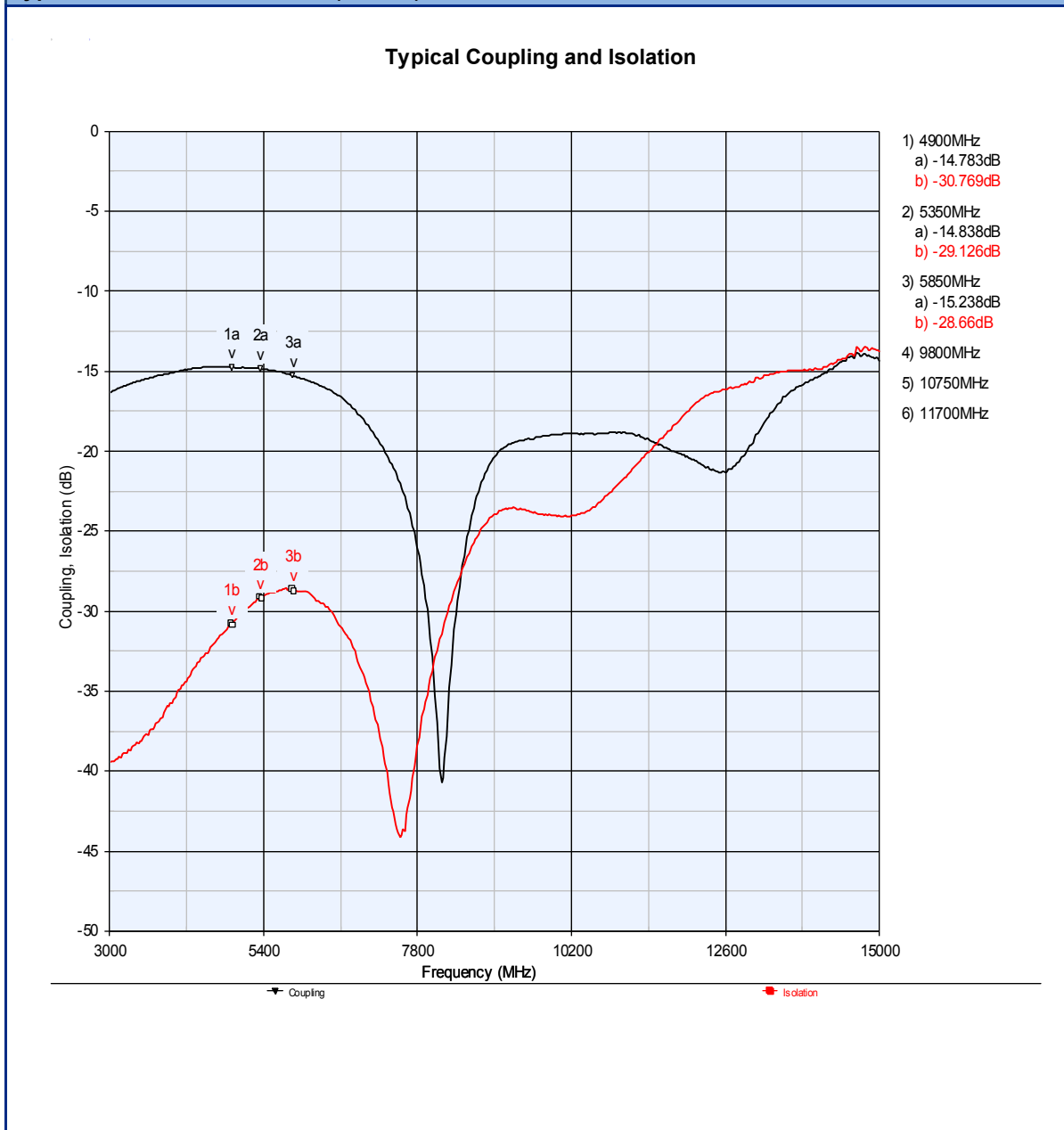
5.3GHz Directional Coupler/ Low Pass Filter Combo Passive

P/N 5300CF15A0950

Detail Specification: 11/29/2018

Page 2 of 4

## Typical Electrical Performance (T=25°C)



Johanson Technology, Inc. reserves the right to make design changes without notice.

All sales are subject to Johanson Technology, Inc. terms and conditions.



<https://www.johansontechnology.com>

4001 Calle Tecate • Camarillo, CA 93012 • TEL 805.389.1166 FAX 805.389.1821

Ver. 2.0

2018 Johanson Technology, Inc. All Rights Reserved

# High Frequency Ceramic Solutions

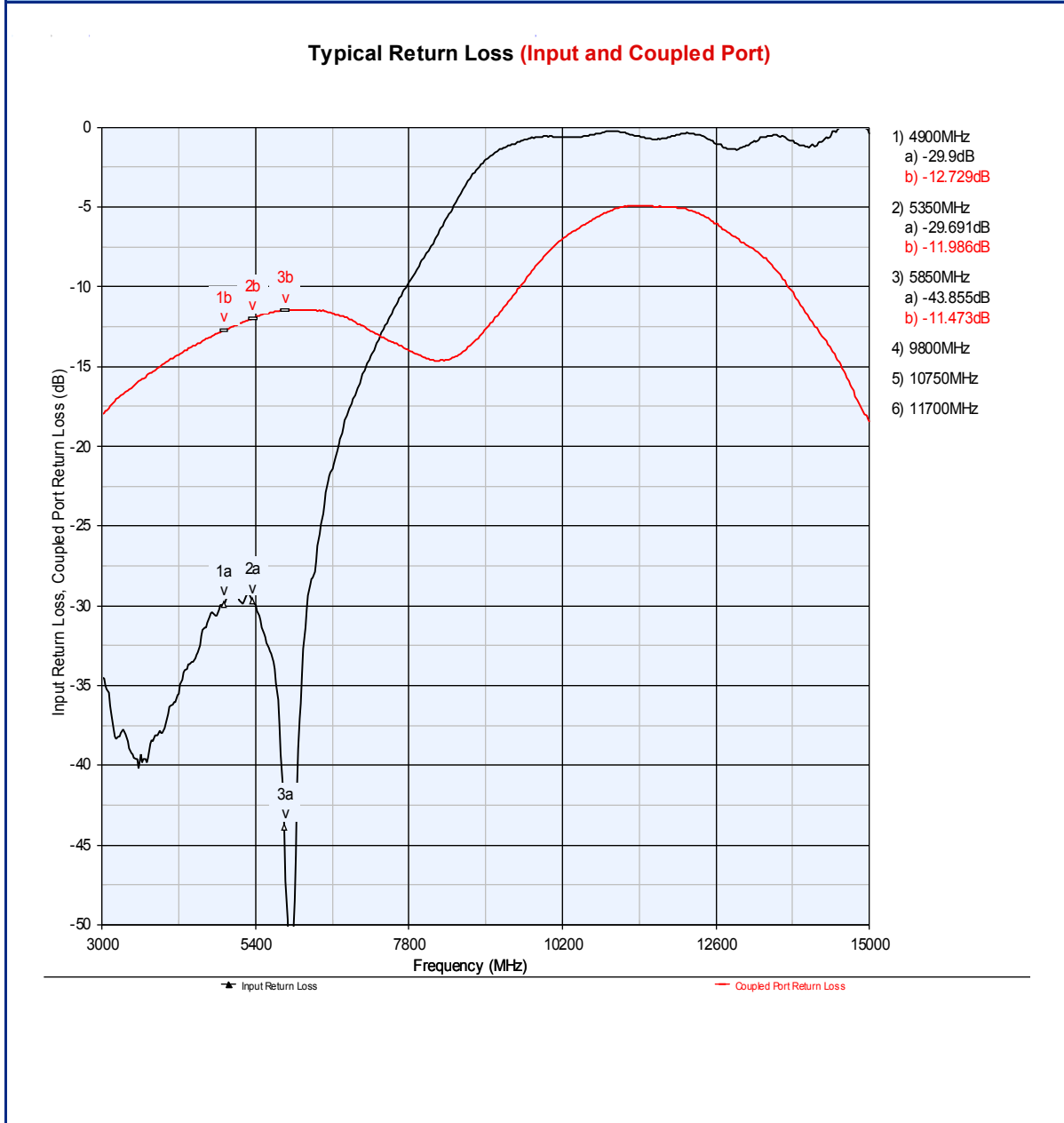
5.3GHz Directional Coupler/ Low Pass Filter Combo Passive

P/N 5300CF15A0950

Detail Specification: 11/29/2018

Page 3 of 4

## Typical Electrical Performance (T=25°C)



Johanson Technology, Inc. reserves the right to make design changes without notice.

All sales are subject to Johanson Technology, Inc. terms and conditions.



<https://www.johansontechnology.com>

4001 Calle Tecate • Camarillo, CA 93012 • TEL 805.389.1166 FAX 805.389.1821

Ver. 2.0

2018 Johanson Technology, Inc. All Rights Reserved

# High Frequency Ceramic Solutions

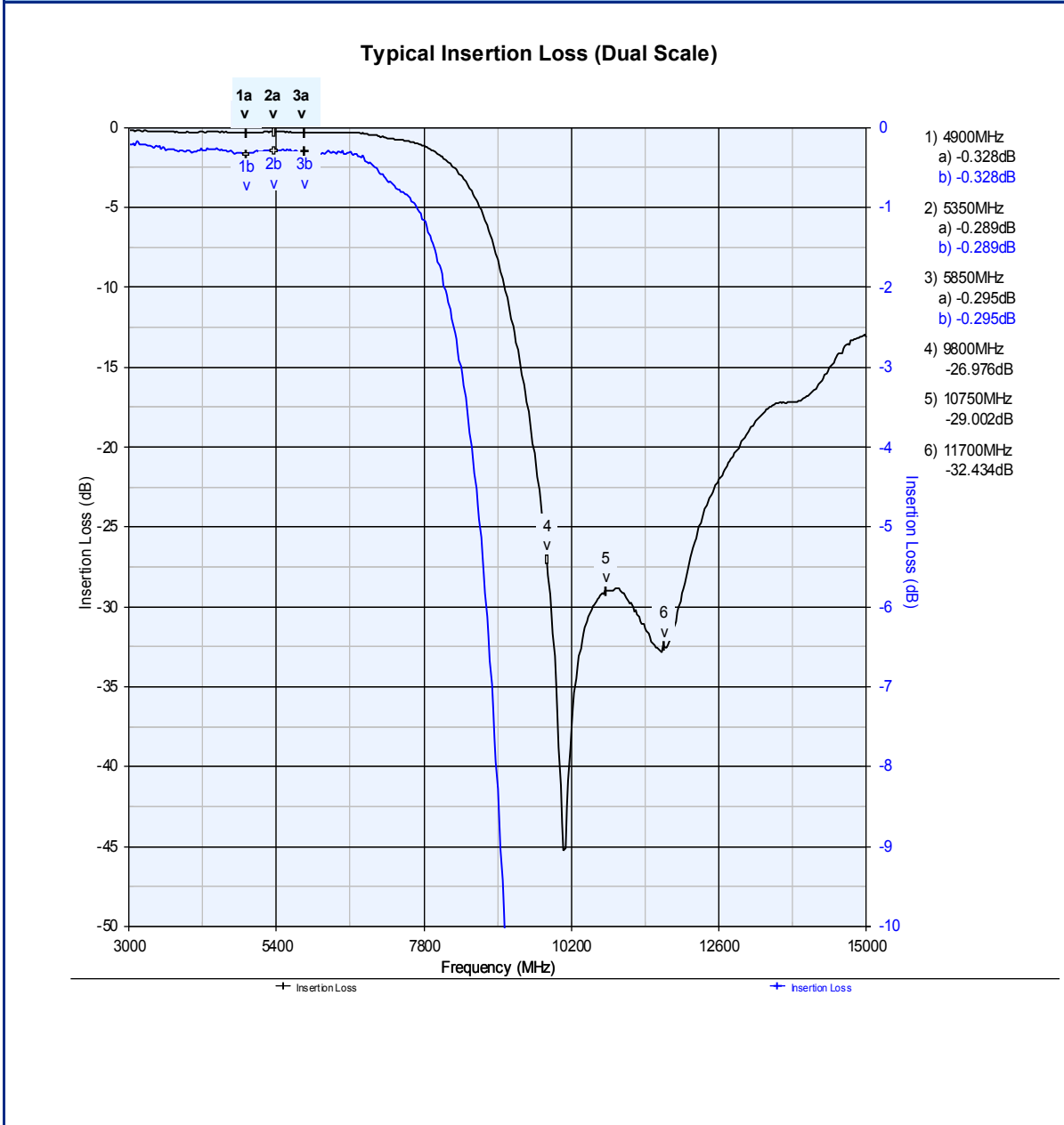
5.3GHz Directional Coupler/ Low Pass Filter Combo Passive

P/N 5300CF15A0950

Detail Specification: 11/29/2018

Page 4 of 4

## Typical Electrical Performance (T=25°C)



Johanson Technology, Inc. reserves the right to make design changes without notice.

All sales are subject to Johanson Technology, Inc. terms and conditions.



<https://www.johansontechnology.com>

4001 Calle Tecate • Camarillo, CA 93012 • TEL 805.389.1166 FAX 805.389.1821

Ver. 2.0

2018 Johanson Technology, Inc. All Rights Reserved