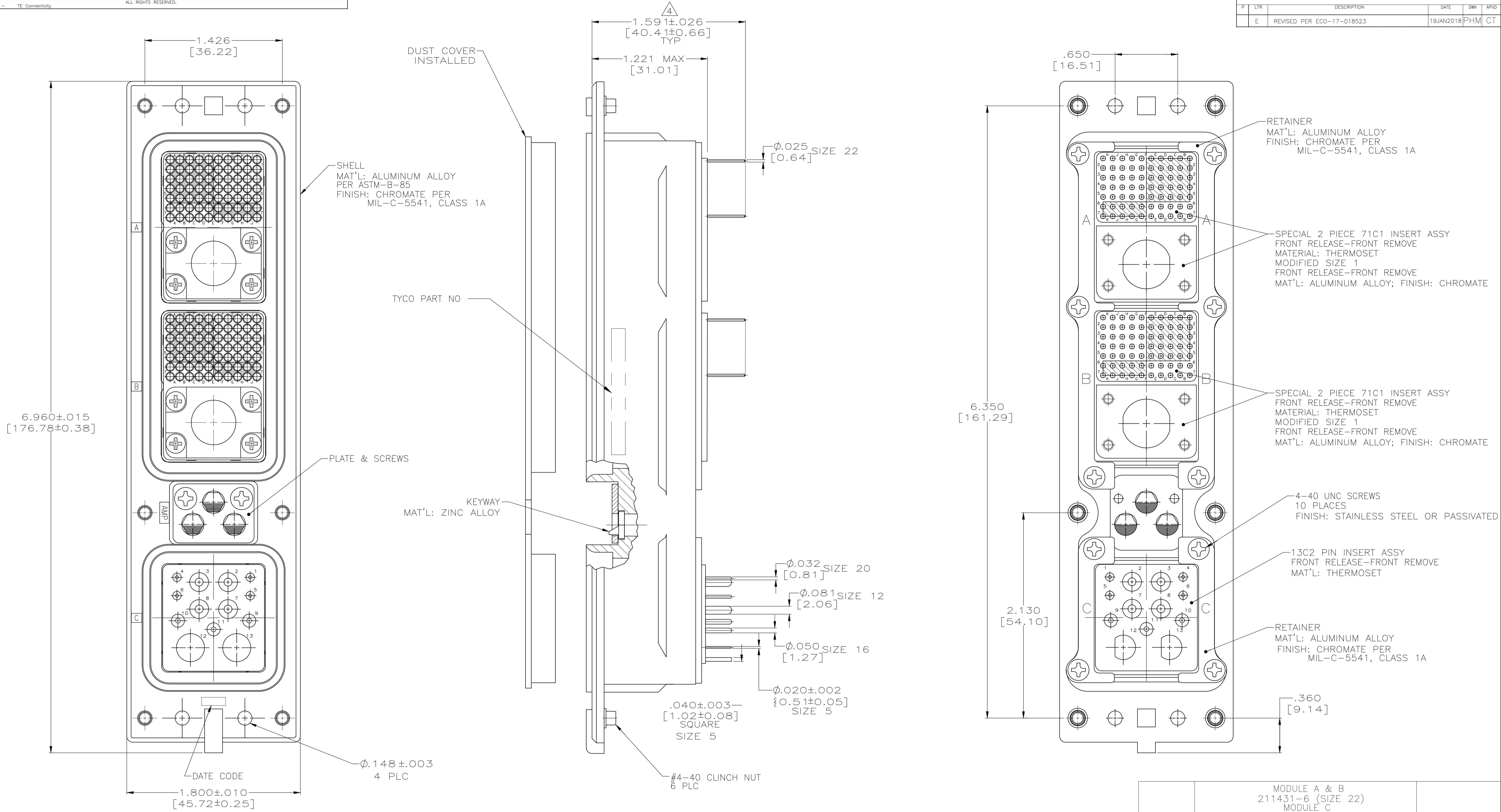


REVISIONS					
P	LTR	DESCRIPTION	DATE	DMN	APVD
E	REVISED PER	ECO-17-018523	19JAN2018	PHM	CT



- CONNECTOR DIMENSIONS ARE PER ARINC 600 SPECIFICATION.
- CONNECTOR IS SUPPLIED WITH CONTACTS (PER TABLE) ASSEMBLED AS SHOWN.
- KEYING SHOWN IN POSITION "01" FOR ILLUSTRATION ONLY. CONNECTORS SHIPPED WITH KEYING INSTALLED IN POSITION PER TABLE. FOR POSITION "00" KEYING HARDWARE SHIPPED UNASSEMBLED.
- WITH CONTACT FULLY SEATED IN CAVITY.
- SIZE 1 COAX CONTACTS NOT INCLUDED, MUST BE ORDERED SEPARATELY
- NOT RELEASED

05	MODULE A & B 211431-6 (SIZE 22) MODULE C P/N 2-448138-6 (SIZE 20) (QTY=4) P/N 448139-6 (SIZE 16) (QTY=3) P/N 448140-6 (SIZE 12) (QTY=4) P/N 1484201-3 (SIZE 5) (QTY=2)	1484613-2
05	MODULE A & B 211431-6 (SIZE 22) MODULE C P/N 2-448138-6 (SIZE 20) (QTY=4) P/N 448139-6 (SIZE 16) (QTY=3) P/N 448140-6 (SIZE 12) (QTY=4) P/N 1484201-3 (SIZE 5) (QTY=1)	1484613-1
KEYING POSITION	CONTACTS INCLUDED AND INSTALLED	PART NUMBER

THIS DRAWING IS A CONTROLLED DOCUMENT. DIN C.C.THOMAS 10-24-02. CHK: S.GLATFELTER 10-24-02. APVD: S.GLATFELTER 10-24-02. NAME: RCPT ASSY, SIZE 2, ARINC 600. PRODUCT SPEC: -. APPLICATION SPEC: -. MATERIAL: SEE CALLOUTS. FINISH: SEE CALLOUTS. WEIGHT: 0.000000. A1 00779. CUSTOMER DRAWING. SCALE: 2:1. SHEET: 1 OF 1. REV: E.