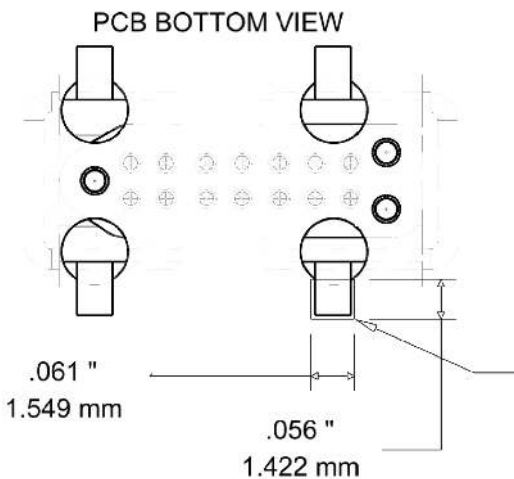
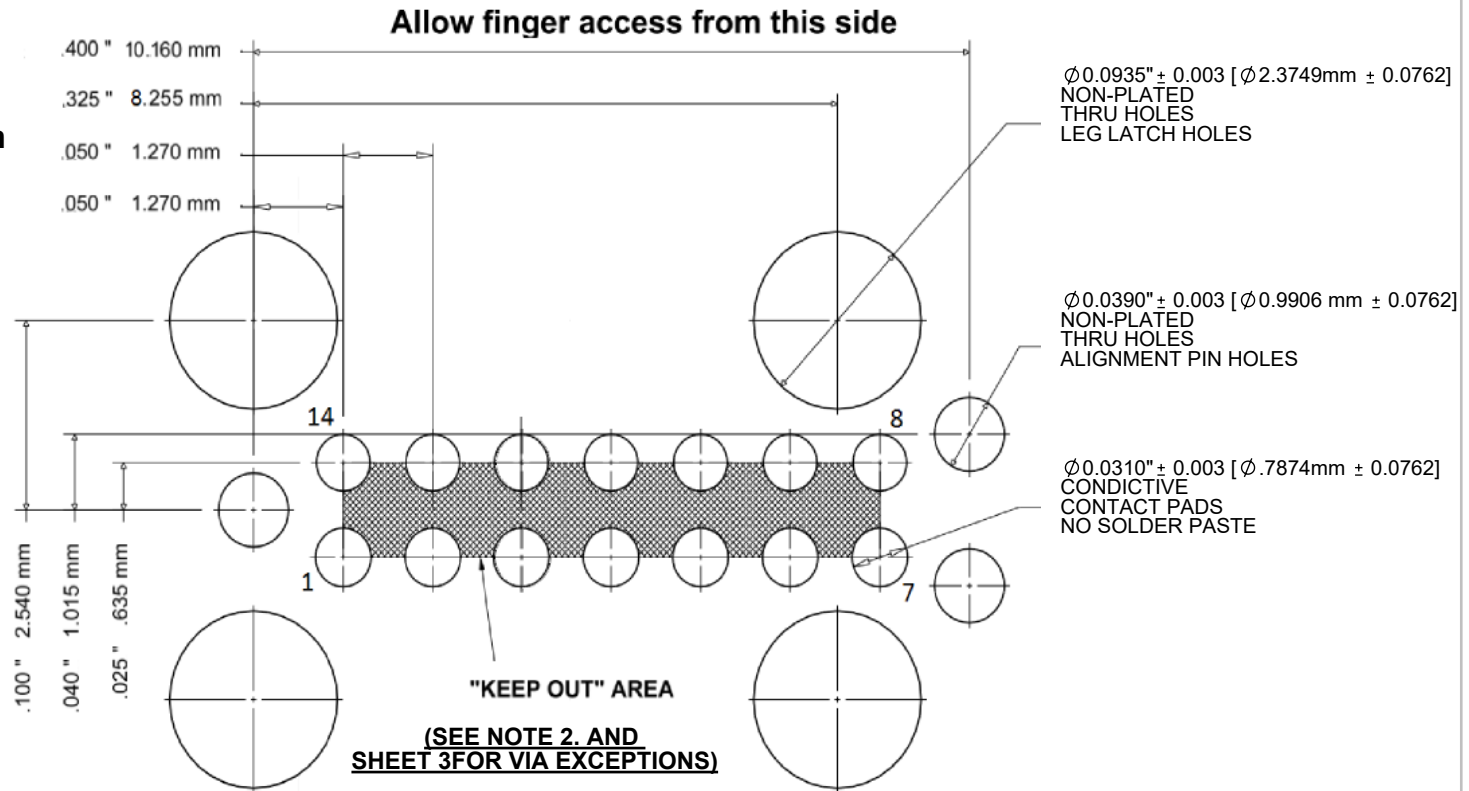


PCB LAYOUT NOTES:

- 1. Allow clearance for finger squeeze access from the two sides shown.**
- 2. No tracks or vias in the shaded "KEEP OUT" area.**
- 3. No other track or signal within 0.020" of any contact pad.**
- 4. Do not allow solder paste on the contact pads. It is essential to eliminate any hole in the solder paste-mask (solder stencil) layer. If this is not possible make the contact pads thru-hole with finished hole size of 0.012" or less.**
- 5. To avoid ordering confusion, please specify DNL in your BOM.**
- 6. Leg and alignment holes may be plated and used as vias but ensure minimum finished hole size meets specified tolerances.**

TC2070-IDC PLUG-OF-NAILS(TM) CABLE			
REV	DESCRIPTION	DATE	REV BY
C	CORRECTED .225" [5.715mm] LEG SPACING TO .325"[8.255mm].	12/16/2017	B.EASTMAN

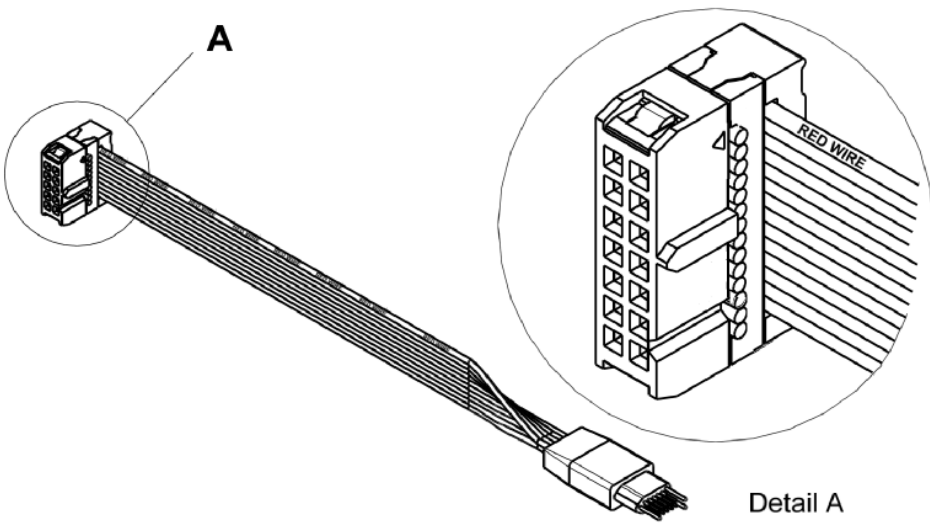
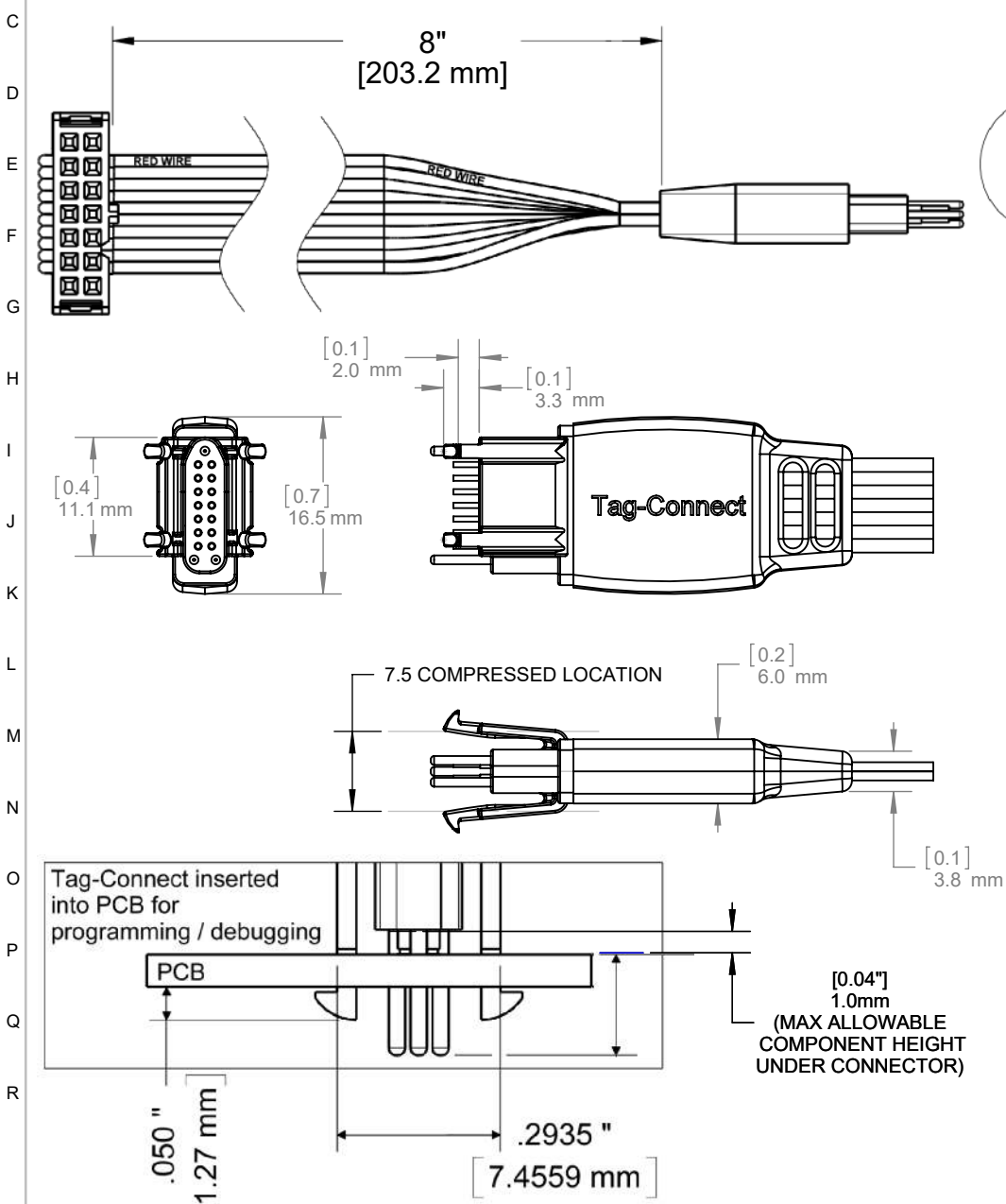


Allow finger access from this side
FOOTPRINT TO BE LABELED "TC2070-FP" ON LAYOUT / BOM

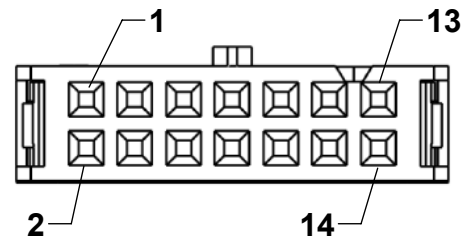
Use TC2070-FP (or TC2070-NL-FP) as the PCB "part" name – the cable must not appear on your BOM! Ensure the "part" in the PCB BOM is labelled as "Nothing to Purchase - Do Not Install" otherwise your CM's will try to buy one cable per PCB assembly!

SIZE A	FSCM NO.	DWG NO. TC2070-IDC	REV C
SCALE 1:5	www.TAG-CONNECT.com	SHEET 1 OF 3	

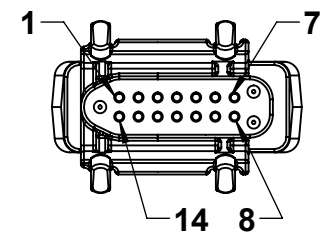
Note:
 Dimmensions subject to change.



**END VIEW
 2x7 0.1" PITCH
 IDC CONNECTOR**

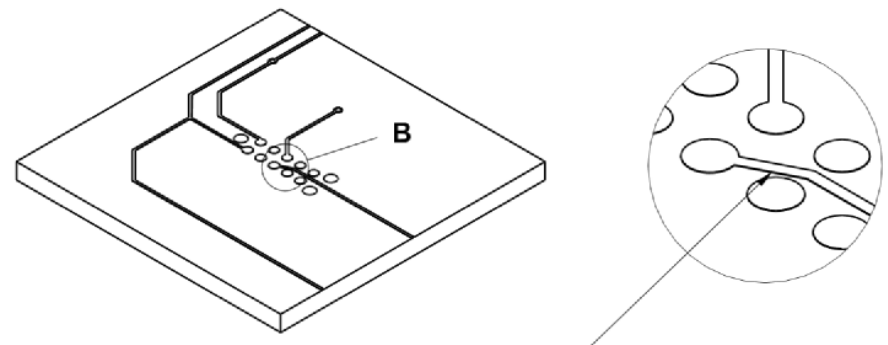
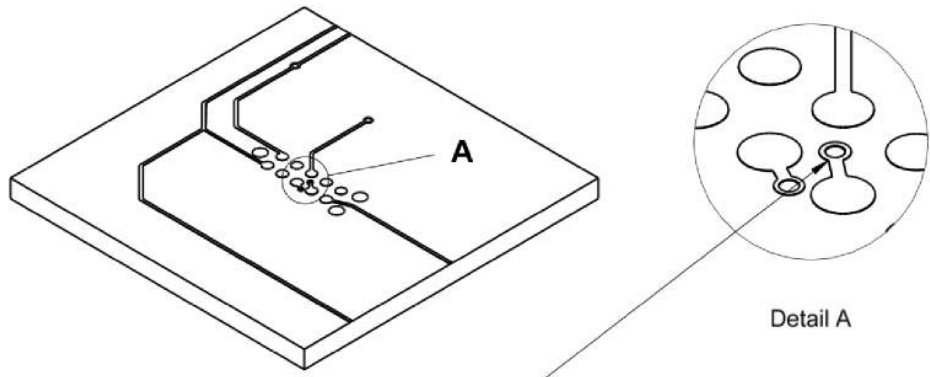


**END VIEW
 14 PIN
 TAG-CONNECT**



SIZE A	FSCM NO.	DWG NO. TC2070-IDC	REV C
SCALE 2:1	www.TAG-CONNECT.com		SHEET 2 OF 3

Layout Problems to Avoid

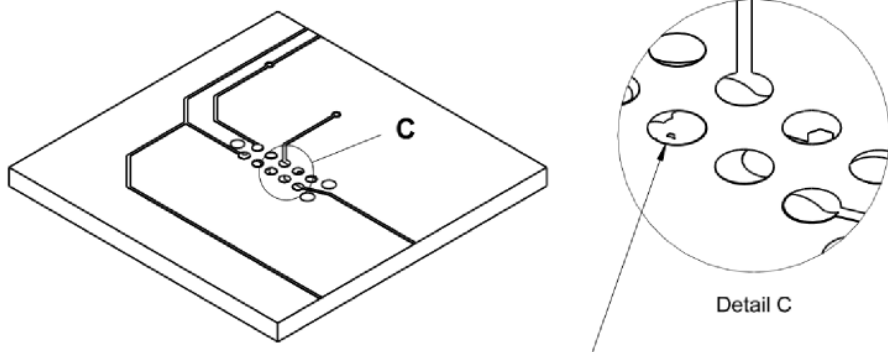


Vias between contact pads

OKAY

Traces less than .02" away from contact pad or in "KEEP OUT" area

NOT OKAY



Do not deposit solder paste on contact pads. View Solder Paste Mask (Solder Stencil) layer in pad-stack and eliminate any hole.

Notes:

- 1) It IS OK to have a conductive via (not filled, not soldermasked) in the center of any of the pads so long as the finished hole is 0.012" or smaller.
- 2) It's NOT OK to have a via between two pads without 0.02" between the via and a pad of a different signal.
- 3) It IS OK to have a small via centered between four pads.

SIZE A	FSCM NO.	DWG NO. TC2070-IDC	REV C
SCALE 2:1	www.TAG-CONNECT.com		SHEET 3 OF 3