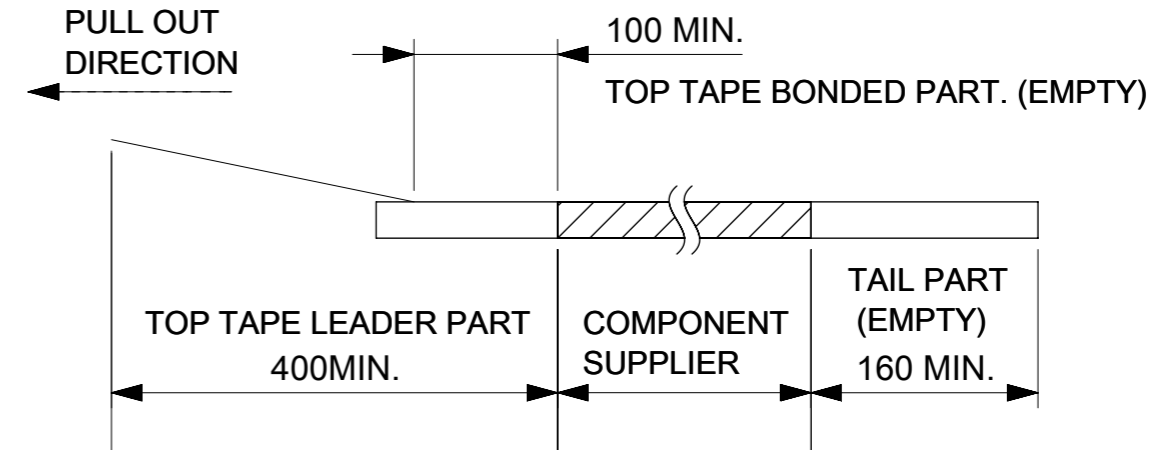
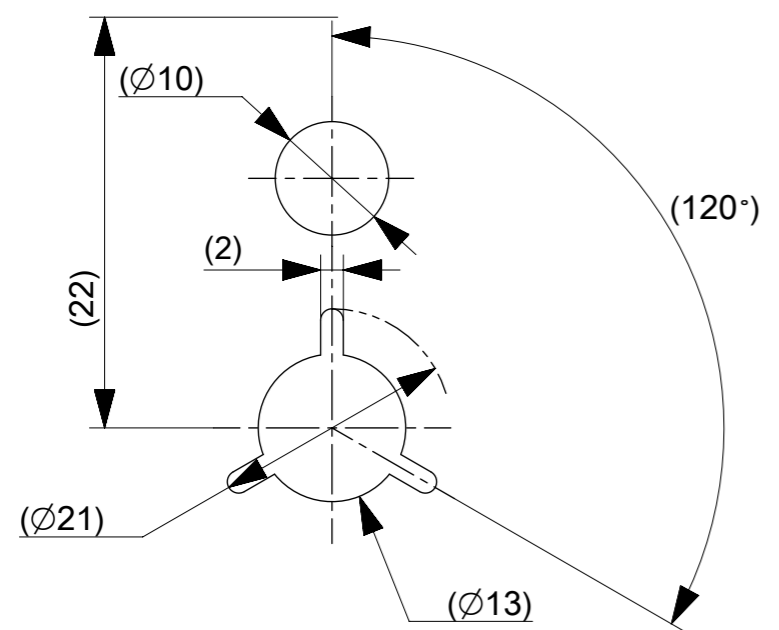


NOTES

1. RE DETAILED DIMENSION, SEE PRODUCT DRAWING.
2. NUMBER OF CONNECTORS : 20000PCS/REEL
3. LEAD TAPE LENGTH.

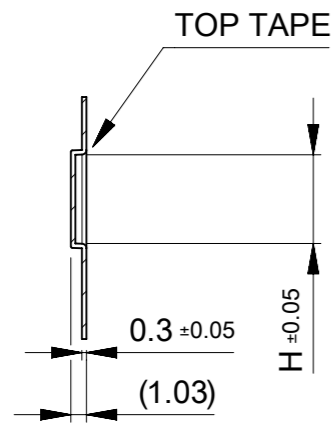


4. PEELING OFF FORCE OF THE TOP TAPE IS DEFINED BY IEC60286-3.
5. MATERIAL  
CARRIER TAPE : POLYSTYRENE OR PET  
TOP TAPE : PET , OTHER  
REEL : POLYSTYRENE (PS) < RECYCLE MATERIAL CONTAINED >
6. ELV AND RoHS COMPLIANT
7. CONFORM TO 2033899200-SPK\_PS200 FOR PACKAGING SPECIFICATION.
8. CONFORM TO 2033899200-SPK\_PS201 FOR PACKAGING SPECIFICATION.

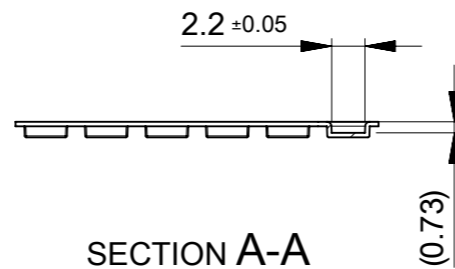
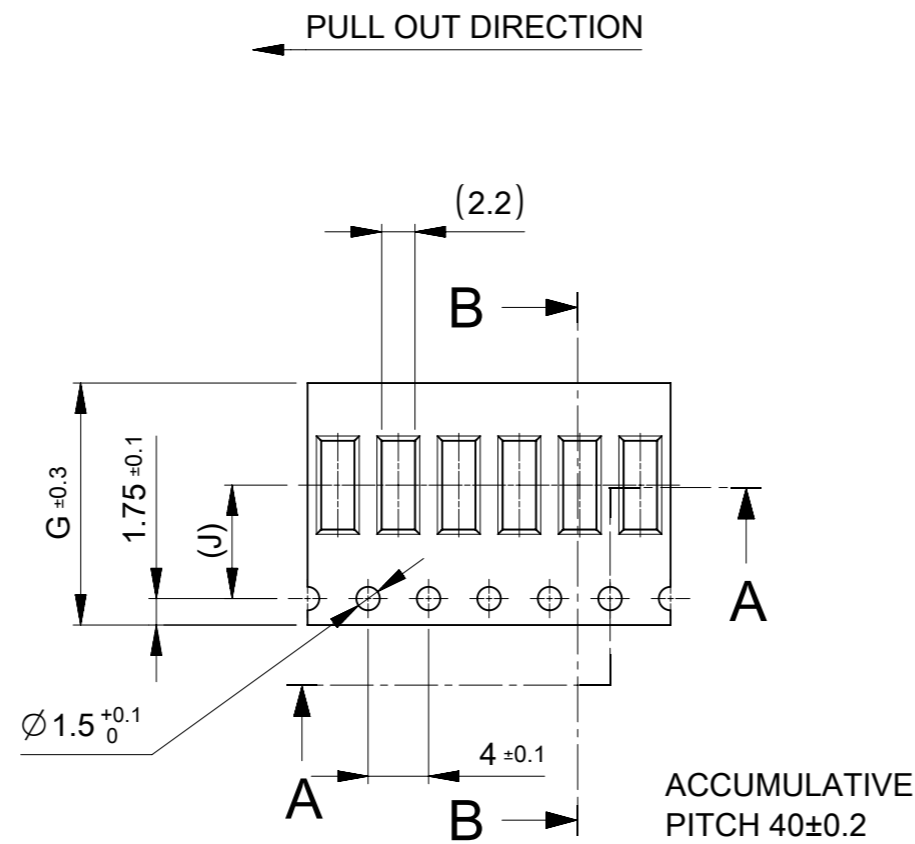


DETAIL "D"

THIS DRAWING CONTAINS INFORMATION THAT IS PROPRIETARY TO MOLEX ELECTRONIC TECHNOLOGIES, LLC AND SHOULD NOT BE USED WITHOUT WRITTEN PERMISSION										
DIMENSION UNITS	SCALE	CURRENT REV DESC:					<b>molex</b>			
mm	1:1									
GENERAL TOLERANCES (UNLESS SPECIFIED)							0.175BB H=0.6 QUADROW REC EMBS PACKAGE			
ANGULAR TOL		± 3.0 °				PRODUCT CUSTOMER DRAWING				
4 PLACES	± 0.03	EC NO: 725424		2022/10/20		DOCUMENT NUMBER				
3 PLACES	± 0.03	DRWN: AISHII		2022/10/20		2033890000-SD		DOC TYPE	DOC PART	REVISION
2 PLACES	± 0.05	CHK'D: YKOBAYASHI02		2022/10/21				PSD	000	E
1 PLACE	± 0.1	APPR: KSASAKI		2022/10/21						
0 PLACES	± 0.2	INITIAL REVISION:								
DRAFT WHERE APPLICABLE MUST REMAIN WITHIN DIMENSIONS		THIRD ANGLE PROJECTION	DRAWING	SERIES	MATERIAL NUMBER	CUSTOMER	SHEET NUMBER			
			A3-SIZE	203389	SEE CHART	GENERAL	1 OF 2			



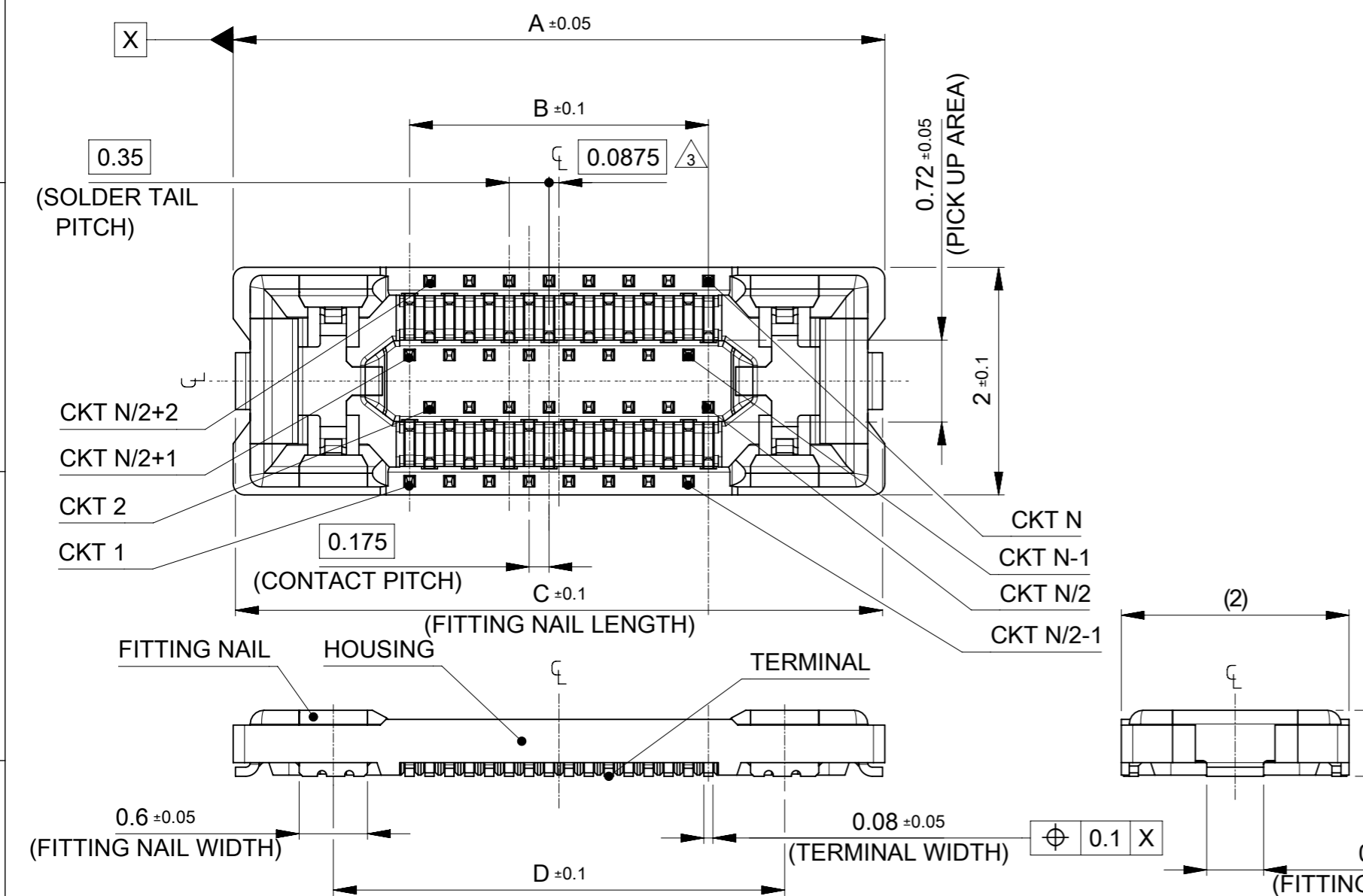
SECTION B-B



SECTION A-A

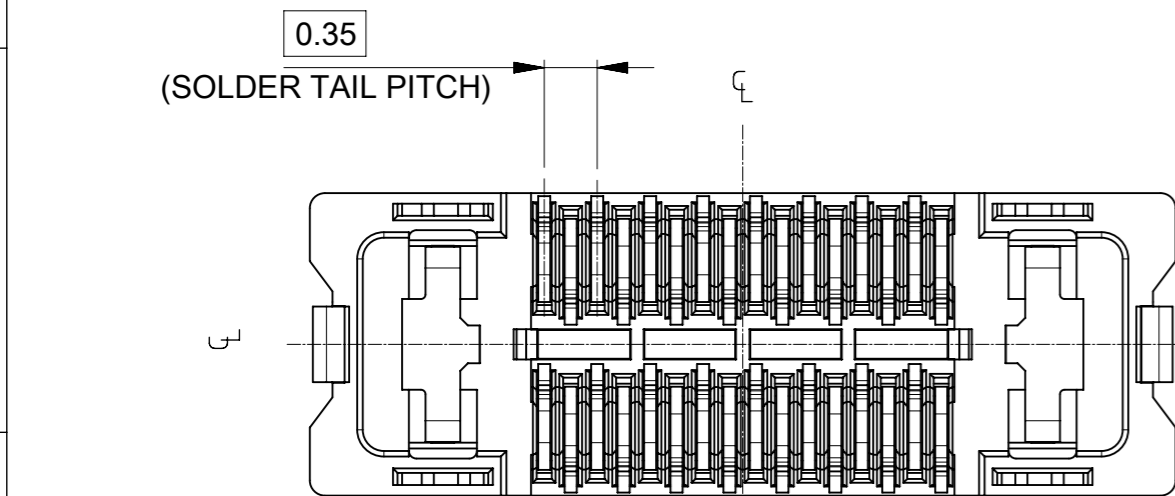
7.5	6.215	16	21.4	17.4	2033890363	2033890361	36
7.5	5.865	16	21.4	17.4	2033890323	2033890321	32
J	H	G	F	E	ORDER NO.	ORDER NO.	CIRCUIT
					PACKAGING SPEC: $\triangle_8$	PACKAGING SPEC: $\triangle_7$	
CONNECTOR SERIES No. 2033890***							

THIS DRAWING CONTAINS INFORMATION THAT IS PROPRIETARY TO MOLEX ELECTRONIC TECHNOLOGIES, LLC AND SHOULD NOT BE USED WITHOUT WRITTEN PERMISSION		CURRENT REV DESC:		<b>molex</b>			
DIMENSION UNITS	SCALE						
mm	2:1			PRODUCT CUSTOMER DRAWING			
GENERAL TOLERANCES (UNLESS SPECIFIED)				DOCUMENT NUMBER			
ANGULAR TOL ± 3.0 °				2033890000-SD		DOC TYPE	DOC PART
4 PLACES ± 0.03			EC NO: 725424		PSD	000	REVISION
3 PLACES ± 0.03			DRWN: AISHII 2022/10/20		E		
2 PLACES ± 0.05			CHK'D: YKOBAYASHI02 2022/10/20				
1 PLACE ± 0.1			APPR: KSASAKI 2022/10/21				
0 PLACES ± 0.2			INITIAL REVISION:				
DRAFT WHERE APPLICABLE MUST REMAIN WITHIN DIMENSIONS		THIRD ANGLE PROJECTION		DRAWING	SERIES	MATERIAL NUMBER	CUSTOMER
				A3-SIZE	203389	SEE CHART	GENERAL
							SHEET NUMBER
							2 OF 2



NOTES

- MATERIAL  
HOUSING : LIQUID CRYSTAL POLYMER UL94V-0(COLOR : BLACK)  
TERMINAL : COPPER ALLOY  
FITTING NAIL : COPPER ALLOY
  - PLATING  
TERMINAL  
CONTACT AREA : GOLD 0.1 μm MIN.  
TAIL AREA : GOLD 0.05 μm MIN.  
UNDER PLATING : NICKEL 1.0 μm MIN.  
\*DIVIDE INTO PARTS THE GOLD PLATING OF CONTACT AND THE TAIL PART BY THE NICKEL PLATING.  
\*EITHER GOLD OR NICKEL PLATING IS ACCEPTABLE IN THE AREA WHICH IS NOT SPECIFIED AS CONTACT , TAIL OR NICKEL BARRIER.  
FITTING NAIL  
CONTACT AREA : GOLD 0.1 μm MIN.  
TAIL AREA : GOLD 0.05 μm MIN.  
UNDER PLATING : NICKEL 1.0 μm MIN.  
\*DIVIDE INTO PARTS THE GOLD PLATING OF CONTACT AND THE TAIL PART BY THE NICKEL PLATING.  
\*EITHER GOLD OR NICKEL PLATING IS ACCEPTABLE IN THE AREA WHICH IS NOT SPECIFIED AS CONTACT , TAIL OR NICKEL BARRIER.
- △3 APPLY FOR (CIRCUIT/4)=EVEN  
 4. MATE WITH : 2033900\*\*1, 2033900\*\*3  
 5. TAIL AND FITTING NAIL COPLANARITY TO BE 0.08mm MAXIMUM.  
 △6 CONFORM TO 2033899200-SPK\_PS200 FOR PACKAGING SPECIFICATION.  
 △7 CONFORM TO 2033899200-SPK\_PS201 FOR PACKAGING SPECIFICATION.

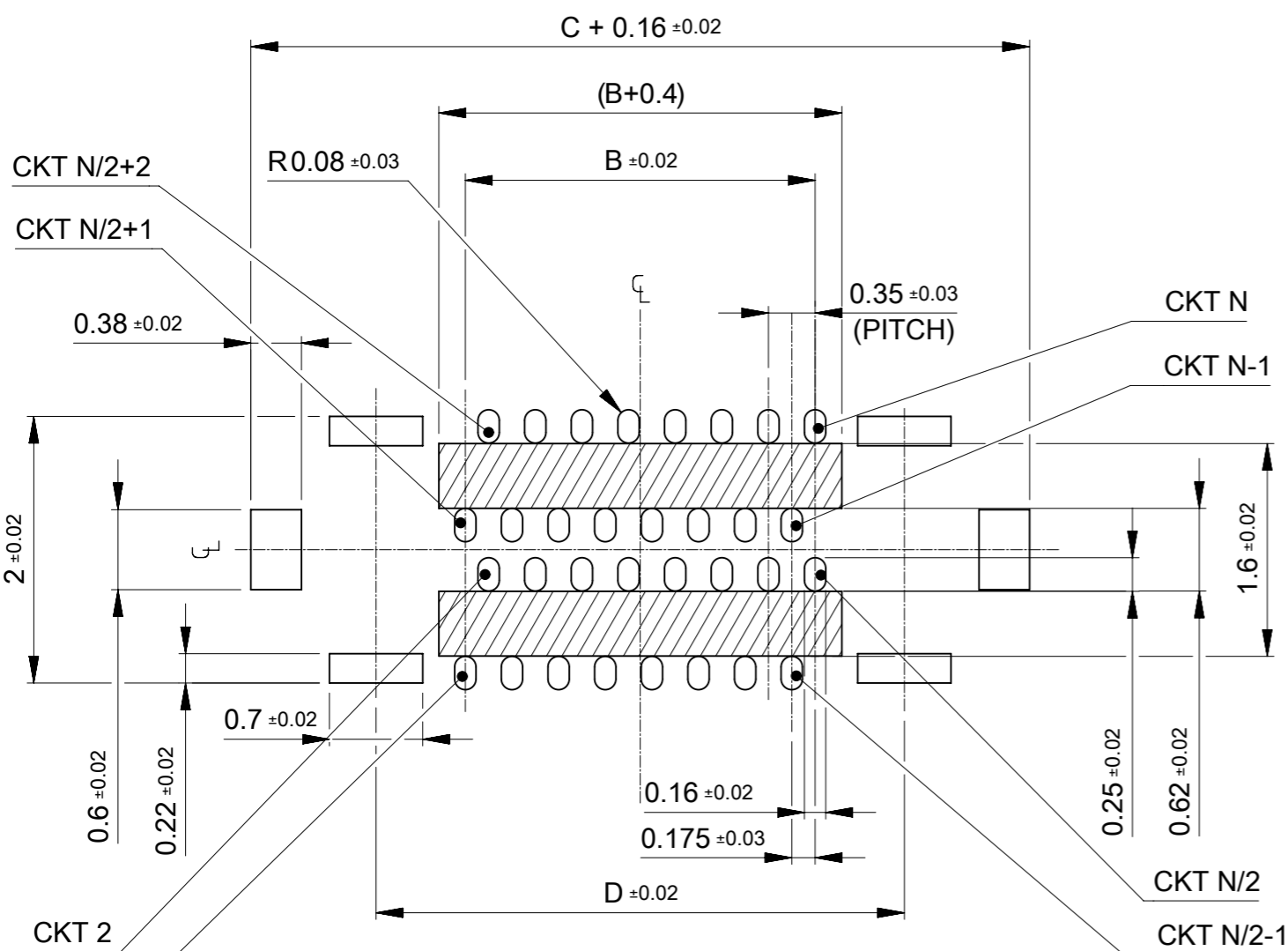


4.315	6.035	2.975	6.075	2033890363	2033890361	36
3.965	5.685	2.625	5.725	2033890323	2033890321	32
D	C	B	A	EMBOSSED TAPE PACKAGE	EMBOSSED TAPE PACKAGE	CIRCUIT
				ORDER No.	ORDER No.	
				PACKAGING SPEC: △7	PACKAGING SPEC: △6	

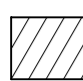
CONNECTOR SERIES No. : 2033891\*\*1

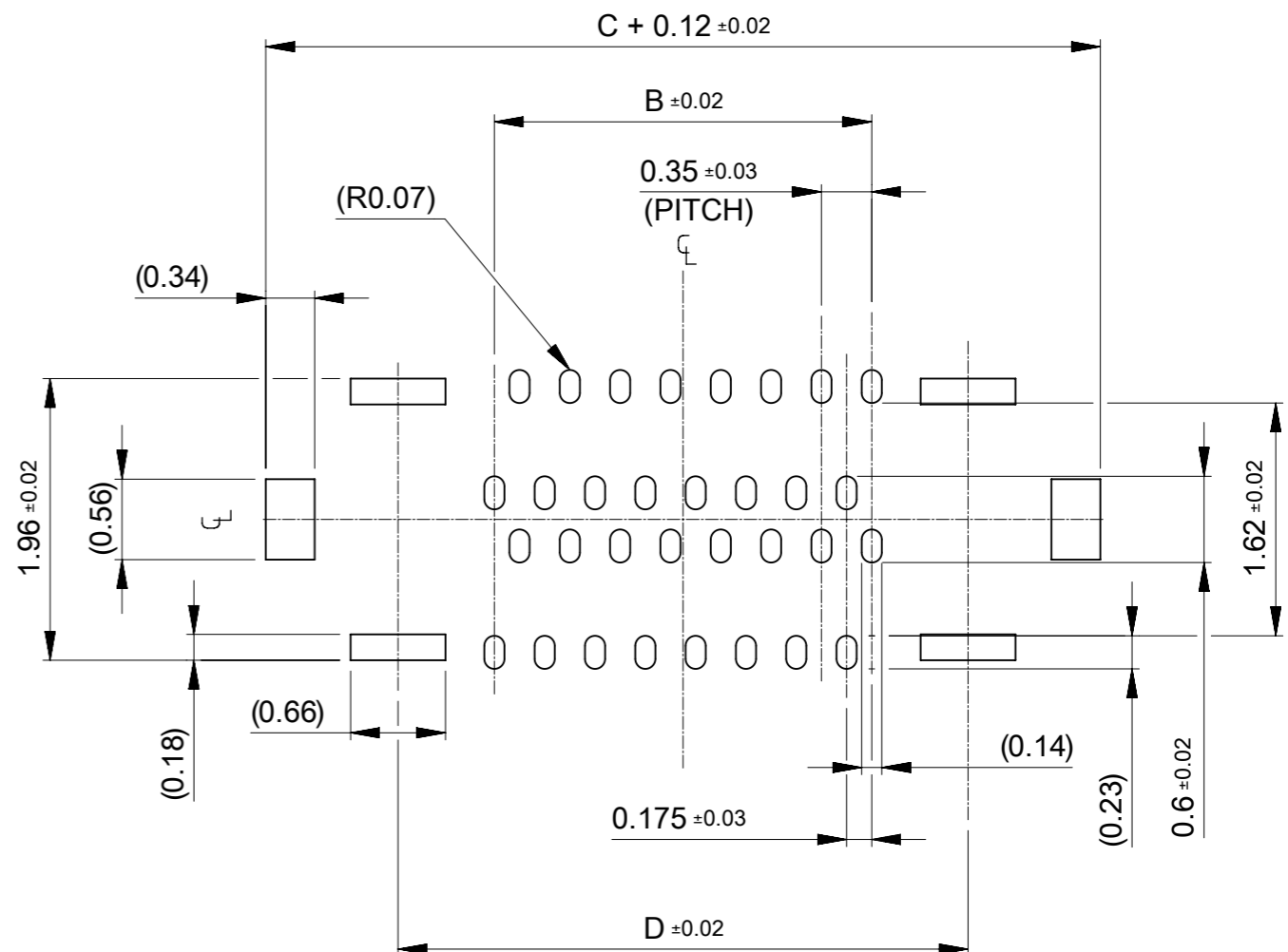
THIS DRAWING CONTAINS INFORMATION THAT IS PROPRIETARY TO MOLEX ELECTRONIC TECHNOLOGIES, LLC AND SHOULD NOT BE USED WITHOUT WRITTEN PERMISSION

DIMENSION UNITS	SCALE	CURRENT REV DESC:		<b>molex</b>
mm	20:1			
GENERAL TOLERANCES (UNLESS SPECIFIED)		EC NO: 725424		0.175 BB H=0.6 QUAD ROW REC ASSY
ANGULAR TOL ± 3.0°		DRWN: AISHII 2022/10/20		
4 PLACES ± 0.03		CHK'D: YKOBAYASHI02 2022/10/20		PRODUCT CUSTOMER DRAWING
3 PLACES ± 0.03		APPR: KSASAKI 2022/10/21		
2 PLACES ± 0.05		INITIAL REVISION:		DOCUMENT NUMBER
1 PLACE ± 0.1		DRWN: DGONDO 2020/06/25		
0 PLACES ± 0.2		APPR: YKOBAYASHI02 2020/07/07		2033891000-SD
DRAFT WHERE APPLICABLE MUST REMAIN WITHIN DIMENSIONS		THIRD ANGLE PROJECTION	DRAWING	SERIES
			A3-SIZE	203389
		MATERIAL NUMBER	CUSTOMER	SHEET NUMBER
		SEE CHART	GENERAL	1 OF 2



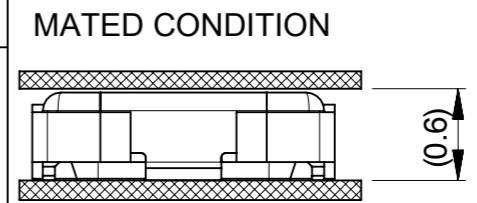
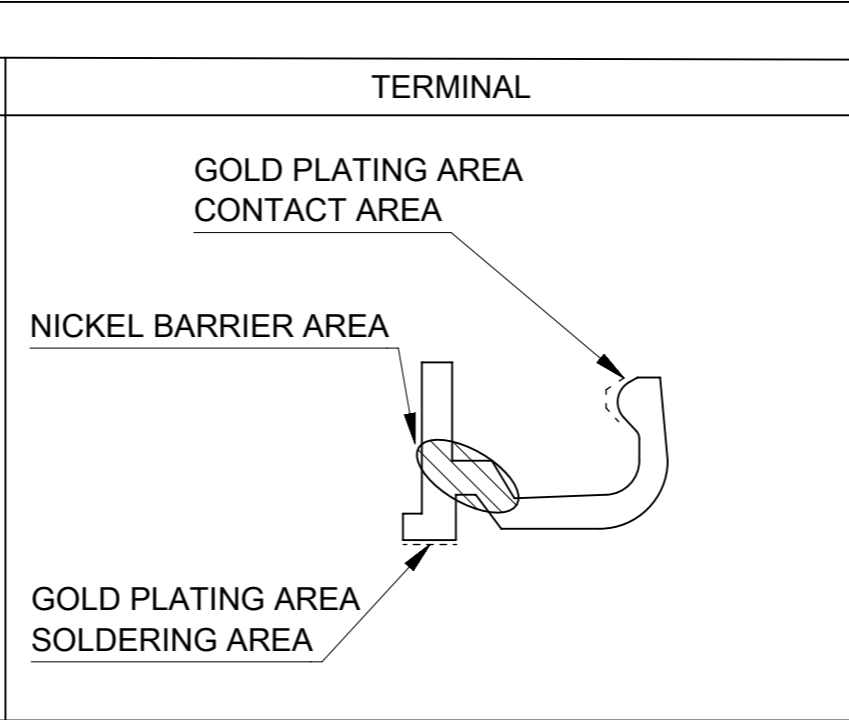
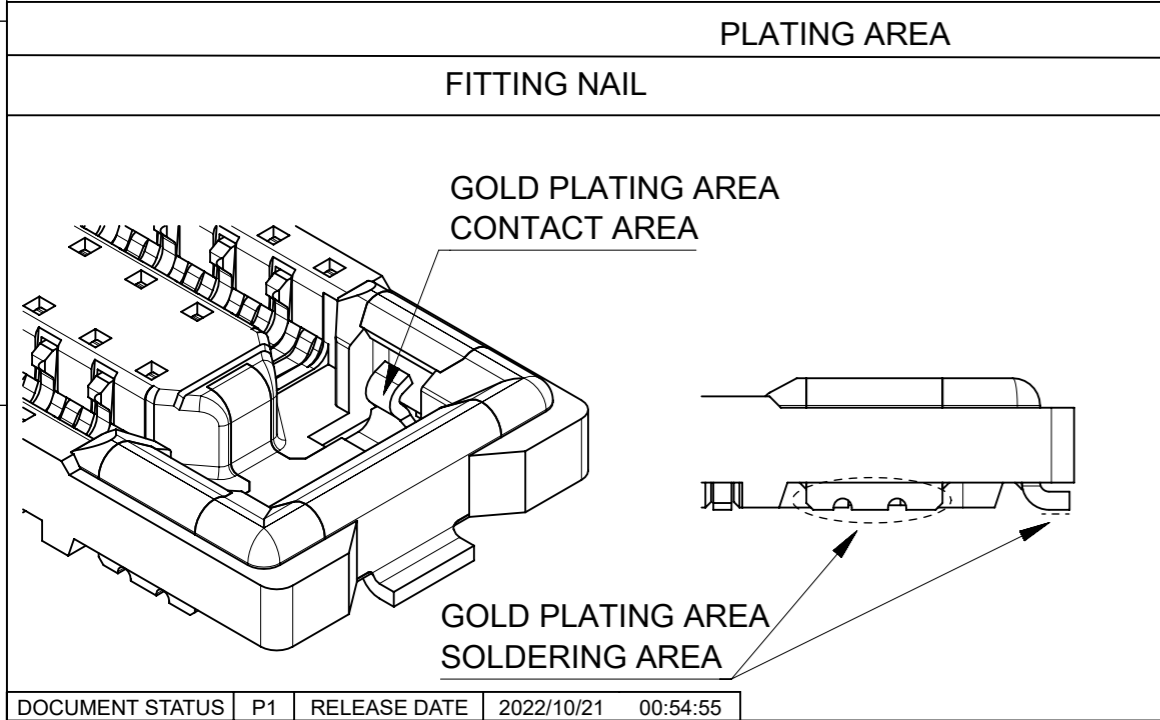
RECOMMENDED P.W. BOARD PATTERN LAYOUT (REFERENCE)  
(SM OPENING DIMENSION)

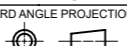
 SOLDERING PROHIBITED AREA  
WHEN WIRING IS LOCATED,  
THE WIRING MUST BE MASKED BY COVER LAY OR RESIST FILM.



RECOMMENDED METAL MASK LAYOUT (REFERENCE)

RECOMMENDED THICKNESS OF METAL MASK : t=0.08mm  
RECOMMENDED OPEN APERTURE RATIO OF METAL MASK : 80%



THIS DRAWING CONTAINS INFORMATION THAT IS PROPRIETARY TO MOLEX ELECTRONIC TECHNOLOGIES, LLC AND SHOULD NOT BE USED WITHOUT WRITTEN PERMISSION											
DIMENSION UNITS		SCALE		CURRENT REV DESC:							
mm		20:1									
GENERAL TOLERANCES (UNLESS SPECIFIED)											
ANGULAR TOL ± 3.0°											
4 PLACES ± 0.03											
3 PLACES ± 0.03											
2 PLACES ± 0.05											
1 PLACE ± 0.1											
0 PLACES ± 0.2											
DRAFT WHERE APPLICABLE MUST REMAIN WITHIN DIMENSIONS											
THIRD ANGLE PROJECTION			DRAWING		SERIES		MATERIAL NUMBER		CUSTOMER		SHEET NUMBER
			A3-SIZE		203389		SEE CHART		GENERAL		2 OF 2
EC NO: 725424				DRWN: AISHII				2022/10/20			
3 PLACES ± 0.03				CHK'D: YKOBAYASHI02				2022/10/20			
2 PLACES ± 0.05				APPR: KSASAKI				2022/10/21			
1 PLACE ± 0.1				INITIAL REVISION:				DOCUMENT NUMBER			
0 PLACES ± 0.2				DRWN: DGONDO				2033891000-SD			
				APPR: YKOBAYASHI02				PSD 000 E			
				2020/06/25							
				2020/07/07							

**molex**

0.175 BB H=0.6 QUAD ROW REC ASSY

PRODUCT CUSTOMER DRAWING