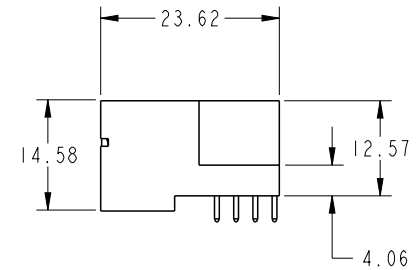
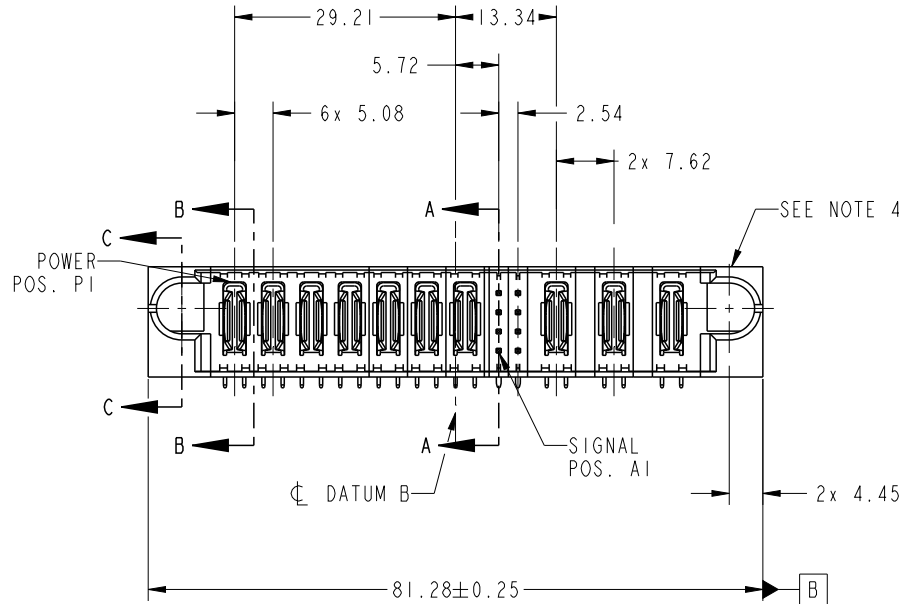


PRODUCT NO.	ROWS	POWER							S	POWER					
		E1	P1	P2	P3	P4	P5	P6	P7	1	2	P8	P9	P10	E2
51939-1012LF	DCBA		PA	PA	PA	PA	PA	PA	PA	HH GG FF EE		PA	PA	PA	



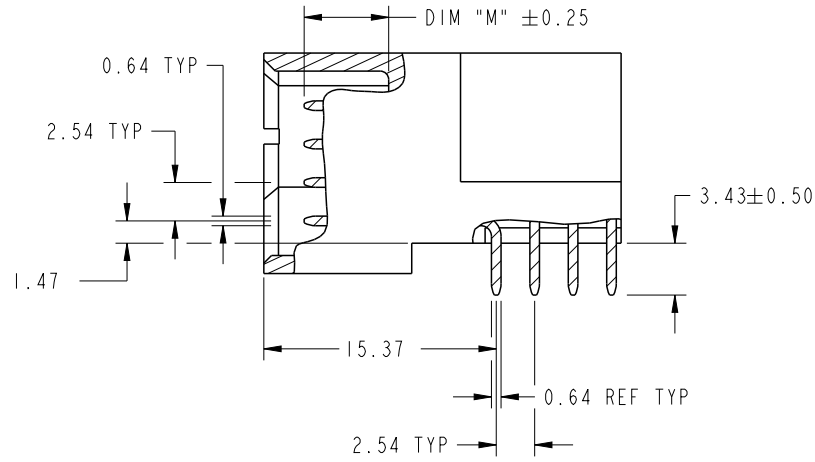
CODE	DIM "M" MATING LENGTH	CONTACT TYPE
H	[5.59]	SIGNAL
G	[5.59]	SIGNAL
F	[5.59]	SIGNAL
E	[5.59]	SIGNAL
PA	[N/A]	POWER

spec ref	See Notes		dr	Fang Qian	2016/03/18	projection 	MM ←→	size	A4	scale	1:1
tolerance std	TOLERANCES UNLESS OTHERWISE SPECIFIED		eng	Fang Qian	2016/04/07			ecn no	-		
See Notes			chr	Fancy Zhang	2016/04/07			rel level	Released		
surface	linear	0.X ±0.5 0.XX ±0.25 0.XXX ±0.1	appr	Pei-Ming Zheng	2016/04/07	product family	PwrBlade	rev	A		
	angular	0° ±2°	Amphenol FCi		7P + 8S + 3ACP RIGHT ANGLE STB HEADER		dwg no	51939-1012	sheet 1 of 4		
			cat. no.	-	Product - Customer Drw						

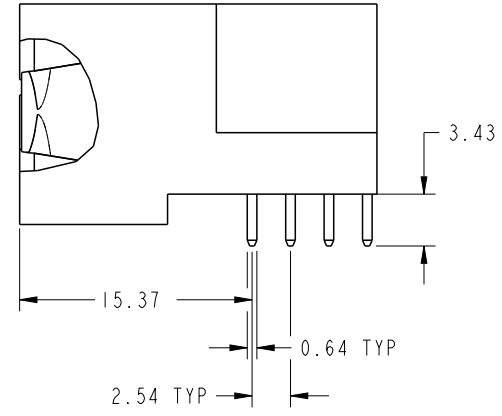
Creo File - REV E - 2016-02-12

PRODUCT NUMBER

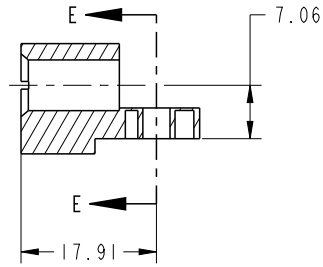
51939-1012LF



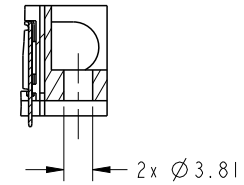
BROKEN-OUT SECTION A-A  
SCALE 2:1



BROKEN-OUT SECTION B-B  
SCALE 2:1

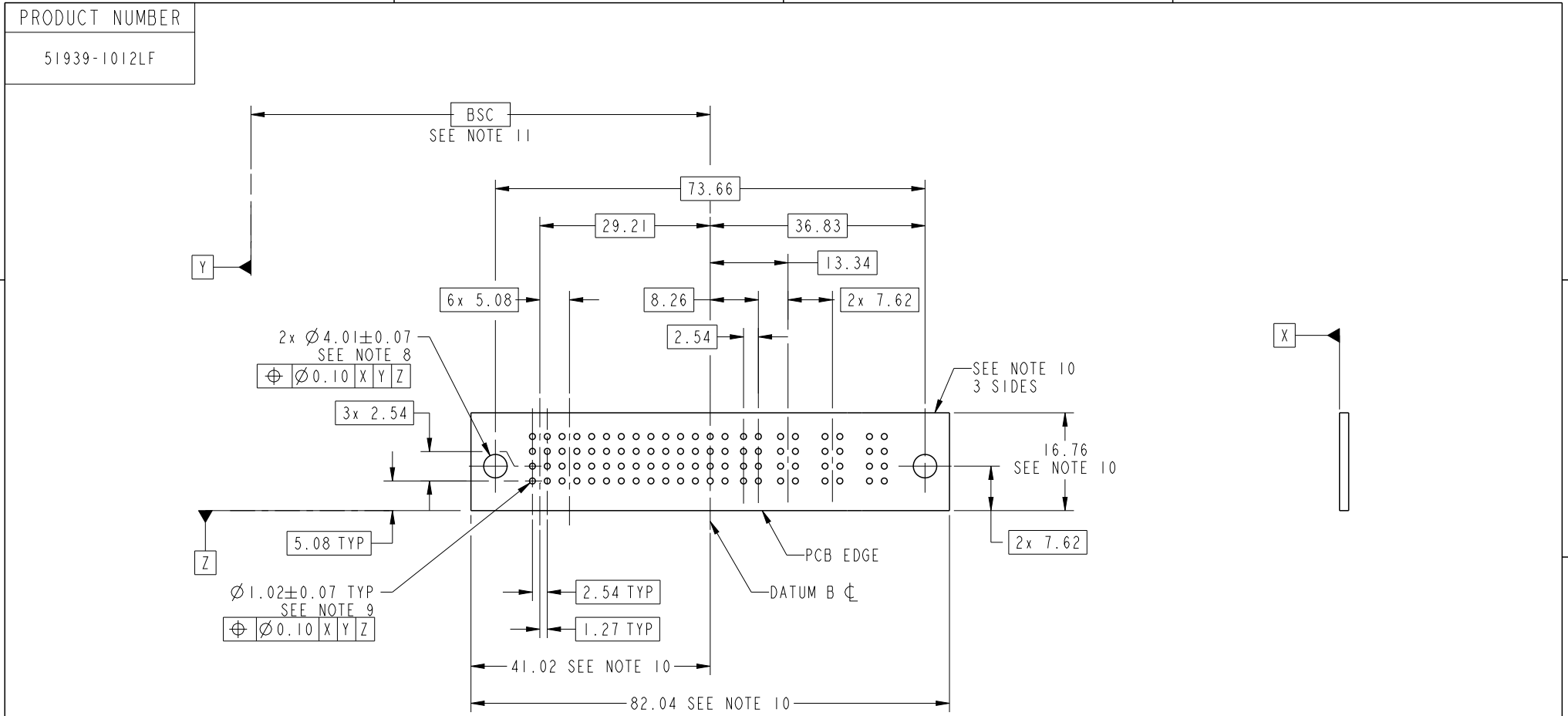


SECTION C-C



PARTIAL SECTION E-E

spec ref		See Notes		dr	Fang Qian	2016/03/18	projection 	MM ←→	size	A4	scale	1:1		
tolerance std		TOLERANCES UNLESS OTHERWISE SPECIFIED		eng	Fang Qian	2016/04/07			ecn no	-				
See Notes				chr	Fancy Zhang	2016/04/07								
surface		linear	0.X ±0.5	appr	Pei-Ming Zheng	2016/04/07	product family		PwrBlade	rel level	Released			
			0.XX ±0.25	Amphenol FCi		part no		7P + 8S + 3ACP		dwg no		51939-1012	rev	A
			0.XXX ±0.1	RIGHT ANGLE STB HEADER		cat. no.		-		Product - Customer Drw		sheet 2 of 4		
		angular	0° ±2°											



RECOMMENDED PCB LAYOUT

spec ref	See Notes			dr	Fang Qian	2016/03/18	projection 	MM ←→	size	A4	scale	1:1
tolerance std	TOLERANCES UNLESS OTHERWISE SPECIFIED			eng	Fang Qian	2016/04/07			ecn no	-		
See Notes				chr	Fancy Zhang	2016/04/07						
surface	linear	0.X	±0.5	appr	Pei-Ming Zheng	2016/04/07	product family	PwrBlade	rel level	Released		
		0.XX	±0.25	<b>Amphenol FCI</b> 7P + 8S + 3ACP RIGHT ANGLE STB HEADER			dwg no	51939-1012		rev	A	
	angular	0°	±2°				cat. no.	-	Product - Customer Drw	sheet 3 of 4		

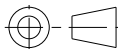

PRODUCT NUMBER  
51939-1012LF

NOTES:

1. DIMENSIONS AND TOLERANCES ARE IN ACCORDANCE WITH ASME Y14.5M, 1994 UNLESS OTHERWISE SPECIFIED.

CONNECTOR NOTES:

- 2. HOUSING MATERIAL: UL 94 V-0 GLASS FILLED HIGH-TEMP THERMOPLASTIC  
POWER CONTACT MATERIAL: COPPER ALLOY  
SIGNAL PIN MATERIAL: COPPER ALLOY
  - 3. SEE FCI PLATING SPEC 10064183.
  - 4. MANUFACTURER'S NAME, DATE CODE AND OPTIONAL P/N TO APPEAR ON THIS SURFACE. THE MARK CAN BE OMITTED IF THERE IS NOT ENOUGH SPACE ON THIS SURFACE.
  - 5. PRODUCT SPECIFICATION GS-12-149.  
APPLICATION SPECIFICATION BUS-20-067.
  - 6. PACKAGED IN TRAYS.
- PCB NOTES:
- 7. ALL HOLE DIAMETERS ARE FINISHED HOLE SIZE.
  - 8. MOUNTING HOLES, WHERE APPLICABLE, ARE UNPLATED.
  - 9.  $\varnothing 1.151 \pm 0.025$  DRILLED HOLES PLATED WITH  
0.008 MIN SnPb OR Sn OVER 0.03  
TO 0.08 Cu PLATING TO ACHIEVE  
 $\varnothing 1.02 \pm 0.07$  HOLE.
  - 10. CONNECTOR KEEP-OUT ZONE.
  - 11. DATUM AND BASIC DIMENSIONS ARE ESTABLISHED BY CUSTOMER.

spec ref		See Notes		dr	Fang Qian	2016/03/18	projection 	MM 	size	A4	scale	1:1	
tolerance std		TOLERANCES UNLESS OTHERWISE SPECIFIED		eng	Fang Qian	2016/04/07			ecn no	-			
See Notes				chr	Fancy Zhang	2016/04/07			product family	PwrBlade		rel level	Released
surface	linear	0.X	$\pm 0.5$	Amphenol FCi	title	7P + 8S + 3ACP RIGHT ANGLE STB HEADER		dwg no	51939-1012		rev	A	
		0.XX	$\pm 0.25$										
		0.XXX	$\pm 0.1$										
	angular	0°	$\pm 2^\circ$	cat. no.	-	Product - Customer Drw		sheet 4 of 4					