

# Type CBS-xxP Automotive Circuit Breaker Rail Interior Mounting



www.optifuse.com

(619) 593-5050

## To be used with ACB-N or MOCB-N Circuit Breakers.

CBS-2P can accommodate up to 2 Circuit Breakers.

CBS-4P can accommodate up to 4 Circuit Breakers.

CBS-6P can accommodate up to 6 Circuit Breakers.

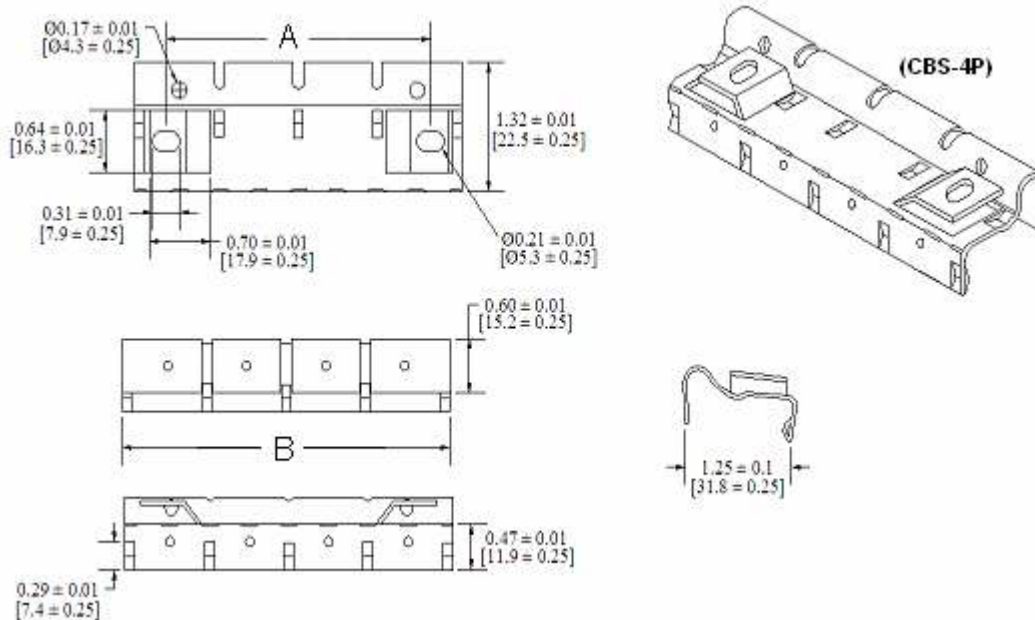
CBS-8P can accommodate up to 8 Circuit Breakers.

CBS-10P can accommodate up to 10 Circuit Breakers.

## Specifications:

**Material:** Steel plated with yellow zinc dichromate

## Mechanical Dimensions: Inches [mm]



Part Number	Circuit Breakers	A = Mounting Hole Spacing	B= Overall Length
CBS-2P	2	1.21±0.01 [30.7±0.25]	1.94±0.01 [49.4±0.25]
CBS-4P	4	3.01±0.01 [76.5±0.25]	3.76±0.01 [95.6±0.25]
CBS-6P	6	4.81±0.01 [122.3±0.25]	5.58±0.01 [141.8±0.25]
CBS-8P	8	6.62±0.01 [168.1±0.25]	7.40±0.01 [188.0±0.25]
CBS-10P	10	8.42±0.01 [213.9±0.25]	9.22±0.01 [234.2±0.25]