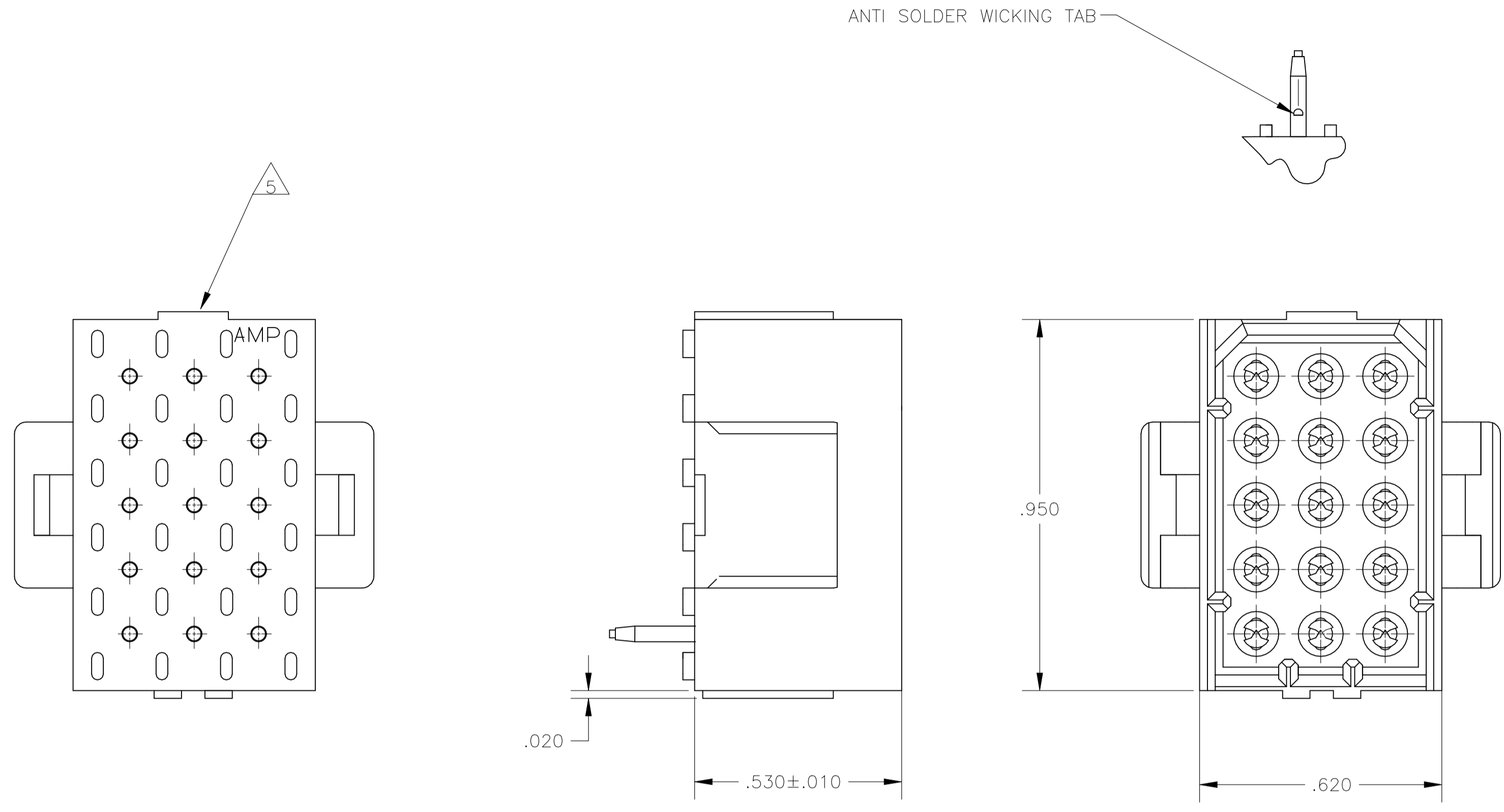
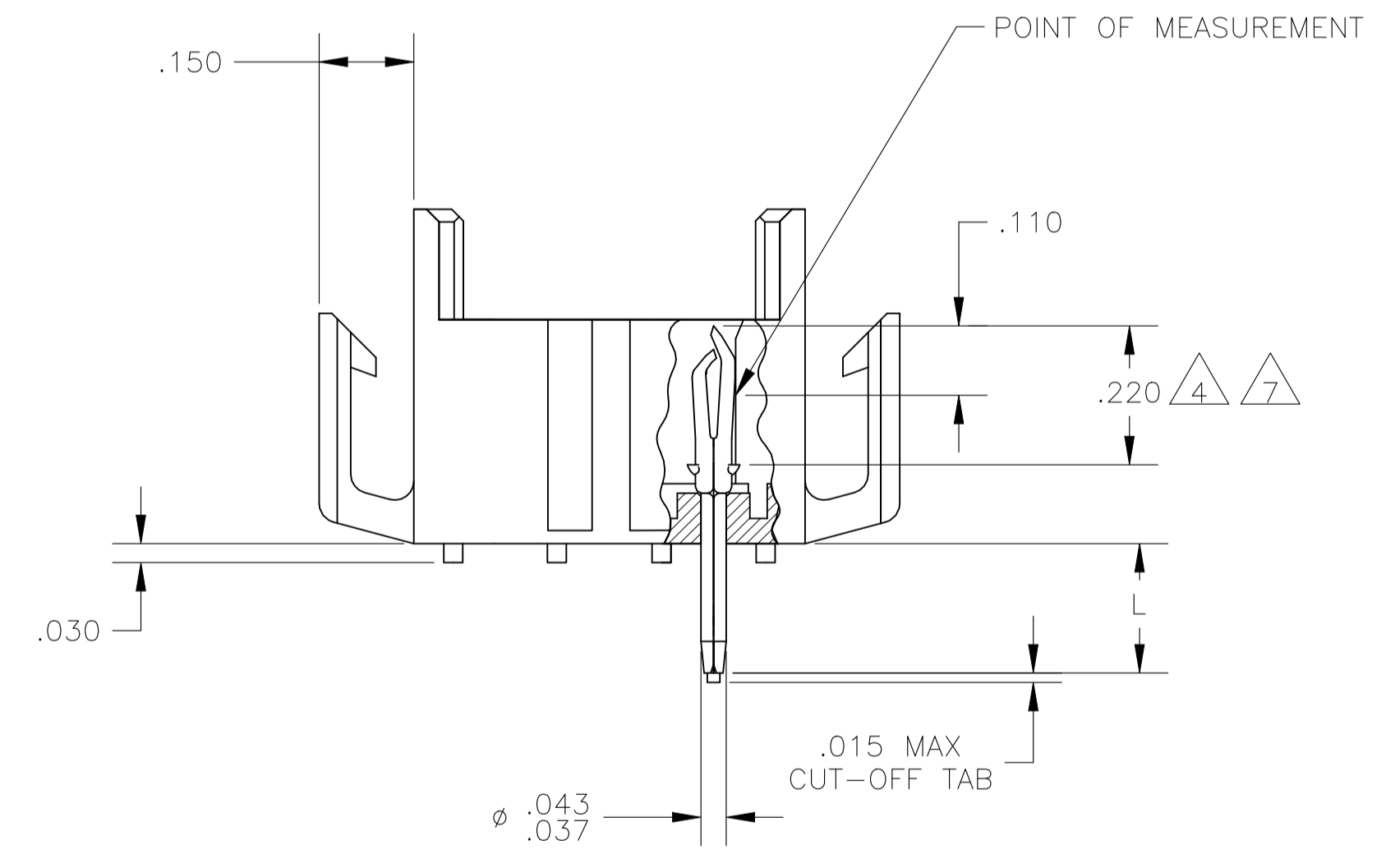
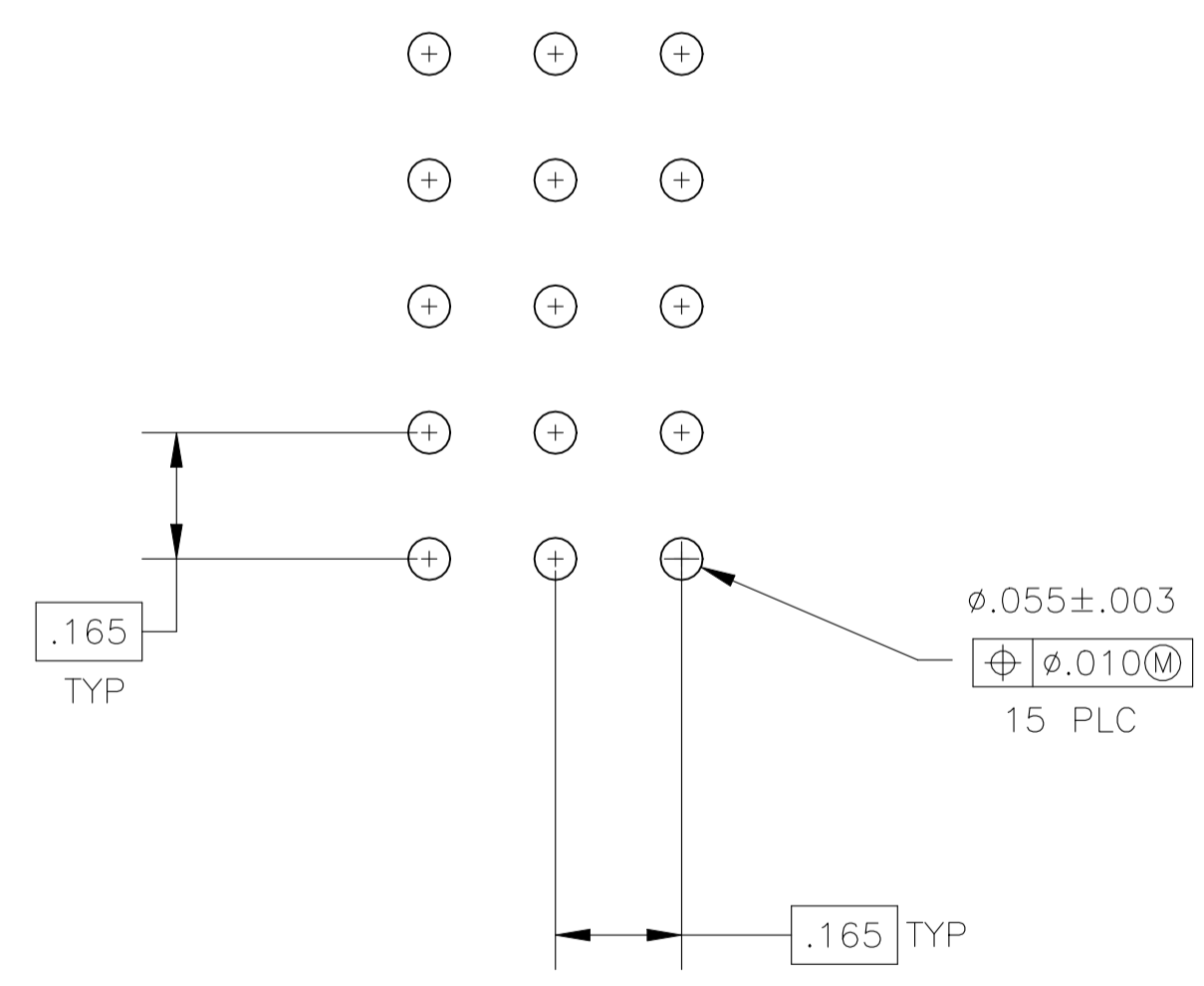


REVISIONS					
P	LTR	DESCRIPTION	DATE	DN	APVD
S		ECO-21-006877	14DEC2021	RK	MZ



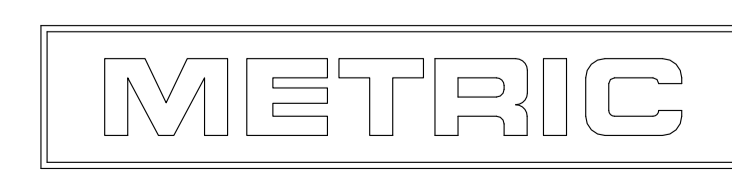
1. FITS SOCKET HOUSING 640523.
2. ASSEMBLY CONFORMS TO AMP SOLDERABILITY SPEC. 109-11-3.
3. FOR USE WITH .063 THICK P.C. BOARD.
4. CONTACT IS PLATED OVERALL WITH .000050 NICKEL, THEN .000030 GOLD OVER CONTACT LENGTH INDICATED AND .000150 MATTE TIN-LEAD ON SOLDER TAIL END.
5. UL AND CSA LOGO LOCATED ON THIS SURFACE.
6. FOR USE WITH .120 THICK P.C. BOARD.
7. CONTACT IS PLATED OVERALL WITH .000050 NICKEL, THEN .000030 GOLD OVER CONTACT LENGTH INDICATED AND .000150 MATTE TIN ON SOLDER TAIL END.
8. HOUSING MATERIAL: PA66, BLACK, UL 94 V-0 RATED
CONTACT MATERIAL: PHOSPHOR BRONZE



.210	6	GOLD	7	2-640503-4
.150	3	GOLD	7	2-640503-2
.210	6	GOLD	4	640503-4
.210	6	PRE-TIN		640503-3
.150	3	GOLD	4	640503-2
.150	3	PRE-TIN		640503-1
"L"	+0.10 -.020	PIN FINISH		PART NUMBER

IN	MM	IN	MM	IN	MM	IN	MM
.010	0.25	.055	1.40	.220	5.59	-	-
.008	0.20	.043	1.09	.210	5.33	-	-
.005	0.13	.037	0.94	.165	4.19	-	-
.003	0.08	.030	0.76	.150	3.81	.950	24.13
.000050	0.00127	.020	0.51	.110	2.79	.620	15.75
.000030	0.00076	.015	0.38	.063	1.60	.530	13.46

CONVERSION TABLE



THIS DRAWING IS A CONTROLLED DOCUMENT.

DIN J. HUFFMAN 28 APR 98
CHK R. SWING 28 APR 98
T. REDDICK 28 APR 98

TE Connectivity

NAME: HEADER ASSEMBLY, PIN, 15 POSITION, MR.

SIZE: A1 CAGE CODE: 00779 DRAWING NO: 640503

SCALE: 4:1 SHEET 1 of 1 REV S