

1 | 2

1 | 2

3 |

3 |

4

4

mot'l. code		tolerances unless otherwise specified		CUSTOMER COPY		title	
lir	ecn no	dr	dtte	lineor	projection	product family	code
C	T06-0078	S.Lin	5/12/06	.XX ± 0.20	MM	SATA	TWN
D	T06-0139	S.Lin	07/31/06	.XXX ± 0.10	MM	SATA	TWN
E	T07-1010	S.Lin	4/11/07	0° ± 2°	MM	SATA	TWN
F	T07-1010	S.Lin	4/11/07	JPEEH	MM	SATA	TWN
G	T07-1101	S.Lin	6/07/07	JPEEH	MM	SATA	TWN
				chr GL Lo	11/16/04		
				oppl JDEY NG	11/16/04		
sheet index	revision	sheet	sheet	sheet	sheet	sheet	sheet
1	G	1	G	1	G	1	G
2	G	2	G	2	G	2	G
	G	3	G	3	G	3	G

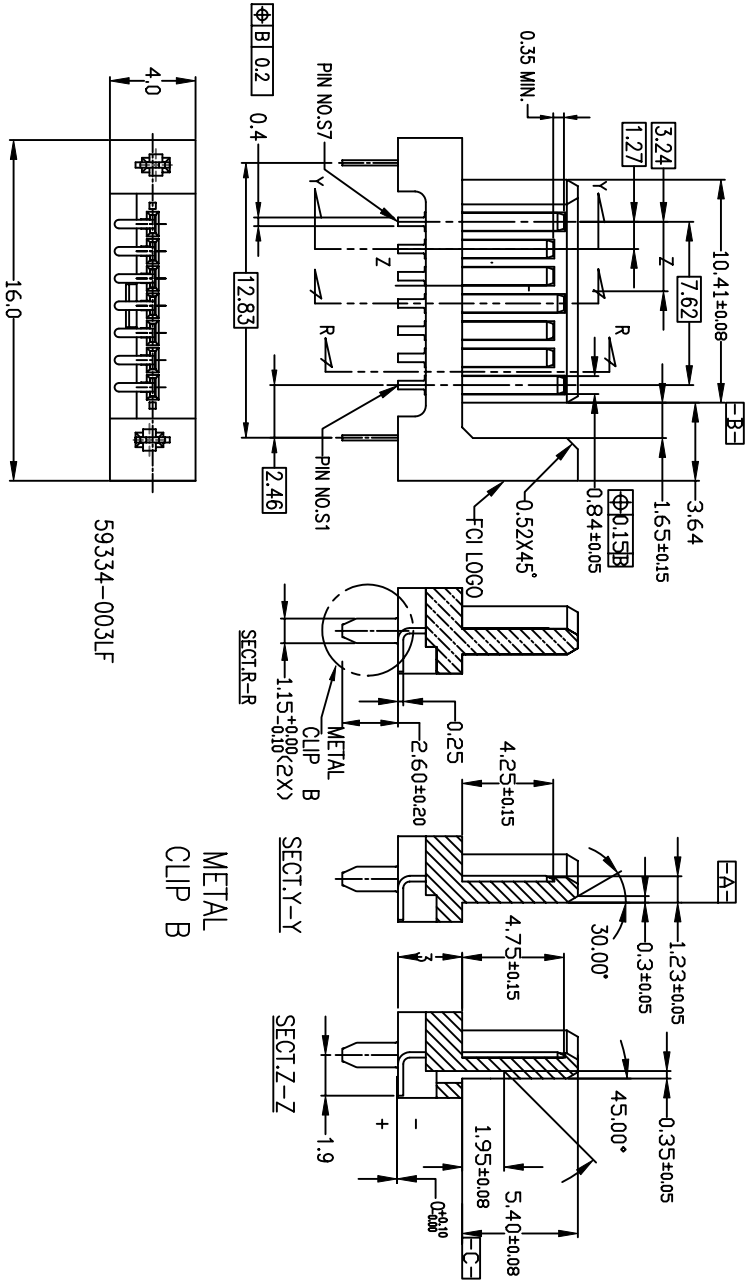
CONFIDENTIAL



www.fciconnect.com

ACJAD

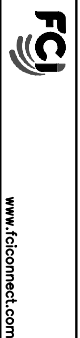
cage code



METAL CLIP B

59334-003LF

CONFIDENTIAL



S-ATA SIGNAL PLUG  
SMT VERTICAL TYPE ASS'Y

mat'l. code	ecn no	dr	dtte	tolerances unless otherwise specified	CUSTOMER COPY	projection	title	product family	code
C	T06-0078	S.Lin	5/12/06	.XX ± 0.20	MM	→	S-ATA SIGNAL PLUG	SATA	TWN
D	T06-0139	S.Lin	07/31/06	.XXX ± 0.10	MM	→	SMT VERTICAL TYPE ASS'Y	SATA	2 of
E	T07-1010	S.Lin	4/11/07	0° ± 2°	MM	→			
F	T07-1010	S.Lin	6/7/07		MM	→			
G	T07-1101	S.Lin	4/15/03		MM	→			
			11/16/04		MM	→			
			11/16/04		MM	→			
sheet index	revision								
1	G								
2	G								
3	G								
4	G								

1 2

ACAD

3

4



- NOTE
1. THIS PRODUCT MEETS THE SATA SPEC REV.1.0a
  2. MATERIAL
    - i) HOUSING : HIGH TEMPERATURE THERMOPLASTIC UL94V-0
    - ii) TERMINAL : COPPER ALLOY
    - iii) HOLD DOWN : COPPER ALLOY
  3. P/N : 59334-XXXXLF
    - i) TERMINAL : Au PLATING AT CONTACT POINT WITH NICKEL UNDERPLATE
    - ii) HOLD DOWN : MATT Sn PLATING
  4. THE HOUSING WILL WITHSTAND EXPOSURE TO 260 C PEAK TEMPERATURE FOR 10 SECONDS IN A CONNECTION, INFRA-RED OR VAPOR PHASE REFLOW OVEN.
  5. FOR P/N NO: 59334-XXXXLF, THIS PRODUCT MEETS EUROPEAN UNION DIRECTIVES AND OTHER COUNTRY REGULATIONS AS DESCRIBED IN GS-22-008.
  6. PRODUCT NUMBERING:
    - 59334 - X X X L F - LEAD FREE

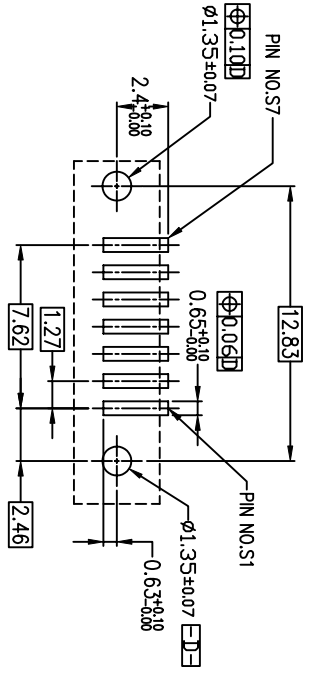
59334 - X X X L F - LEAD FREE

HOUSING COLOR:  
BLANK : BLACK

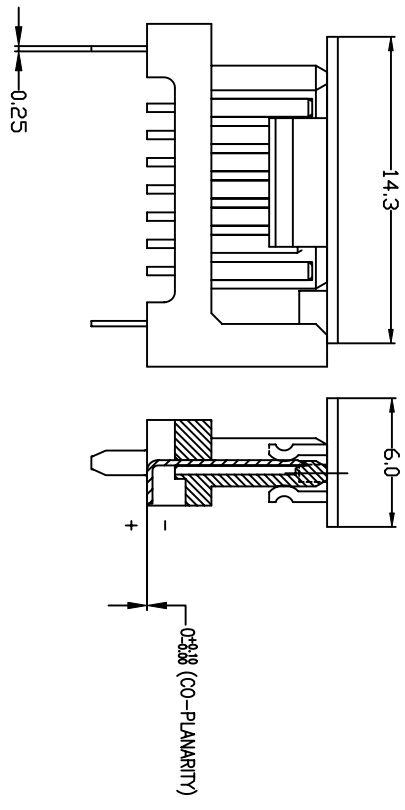
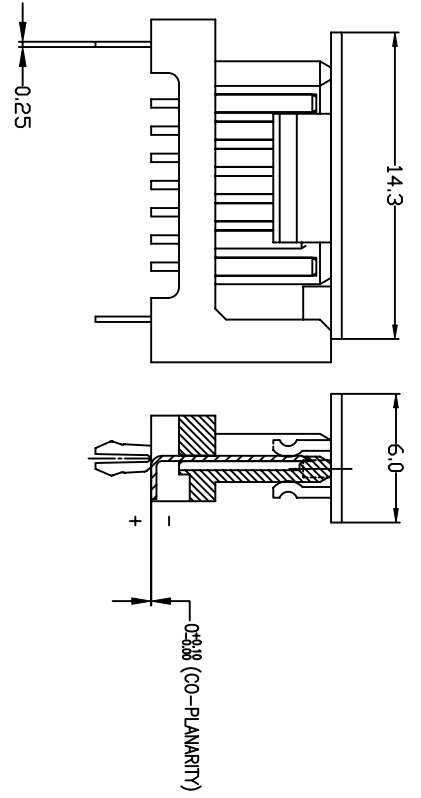
2: CLIP TYPE A  
3: CLIP TYPE B

PACKAGING:  
0: TUBE  
1: TRAY WITH CAP  
2: TAPE & REEL WITH CAP

PLATING AT CONTACT AREA  
0: 15 U" GOLD  
1: 5U" GOLD

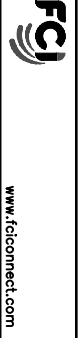


RECOMMENDED MOUNTING LAYOUT  
RECOMMENDED PCB T = 1.60mm  
TOLERANCE UNLESS OTHERWISE : ±0.1



mot'l. code	ecn no	dr	dtte	linear	angles	dr	engr	chr	GL	LOO	scale	product family	title
A	S03-0057	JPEH	04/15/03	.XX ± 0.20			JPEH				MM	SATA	S-ATA SIGNAL PLUG
B	S04-0170	JPEH	08/04/04	.XXX ± 0.10	0° ± 2°		JPEH				NA	SATA	SMT VERTICAL TYPE ASS'Y
C	S04-0244	GLL	11/16/04				JPEH				NA	SATA	
D	T06-0078	S.Lin	5/12/06				JPEH				MM	SATA	
E	T06-0139	S.Lin	7/31/06				JPEH				MM	SATA	
F	T07-1010	S.Lin	4/11/07				JPEH				MM	SATA	
G	T07-1101	S.Lin	6/07/07				JPEH				MM	SATA	

CONFIDENTIAL



www.fciconnect.com

ACAD

cage code