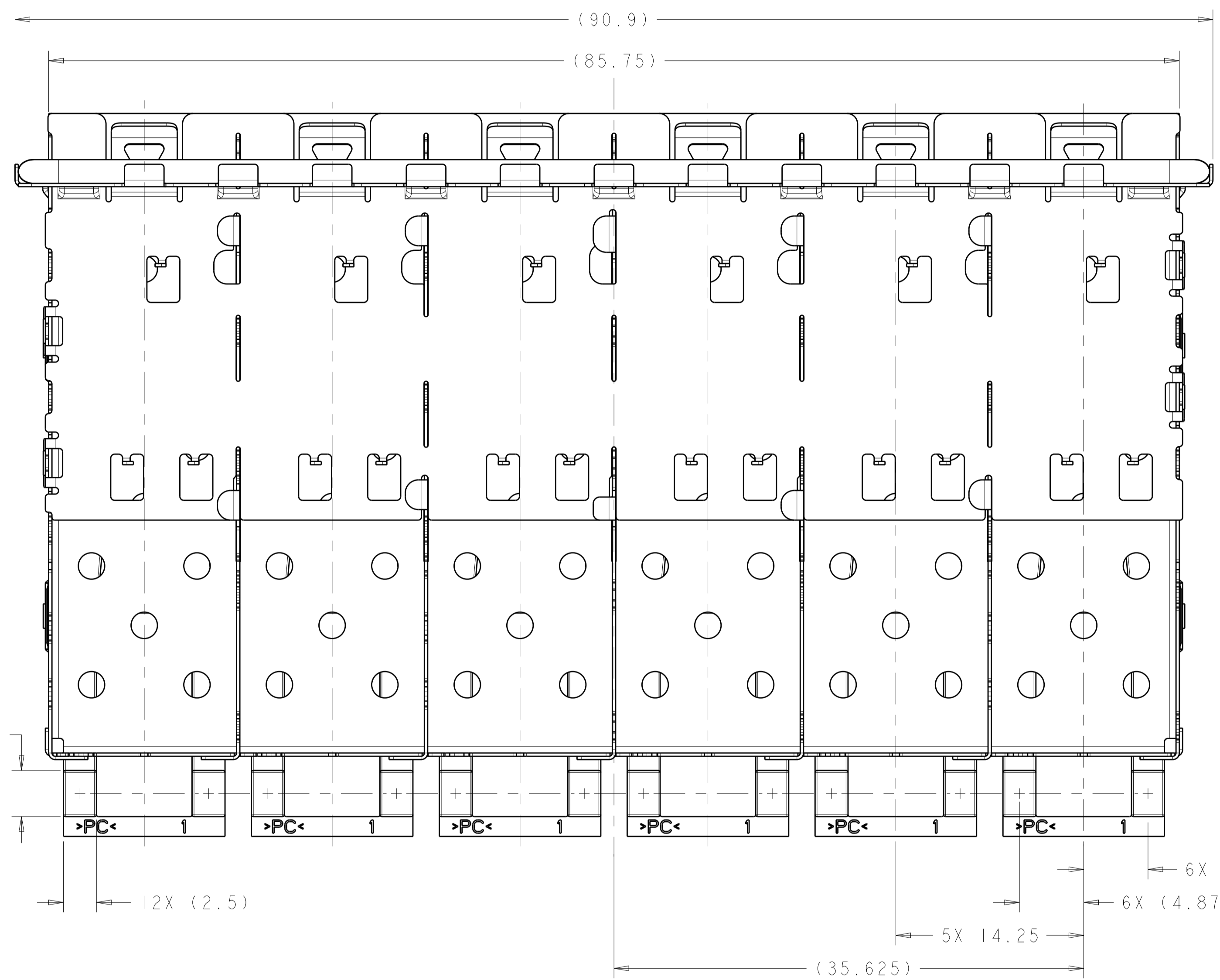
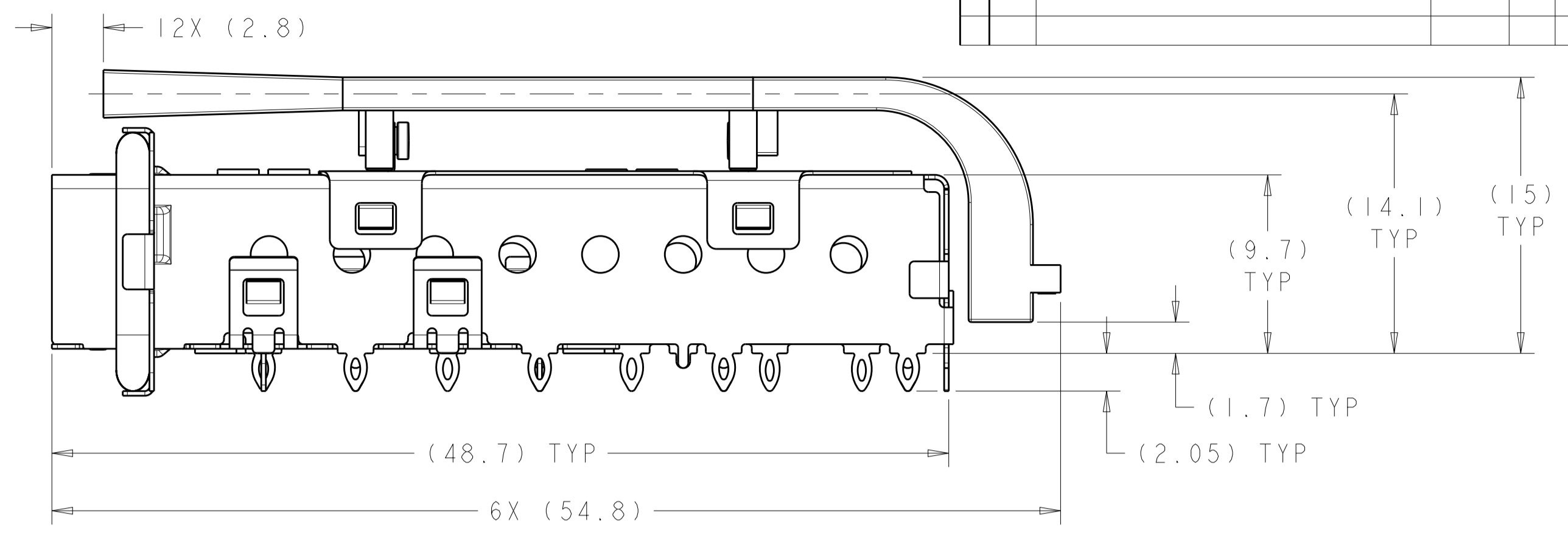
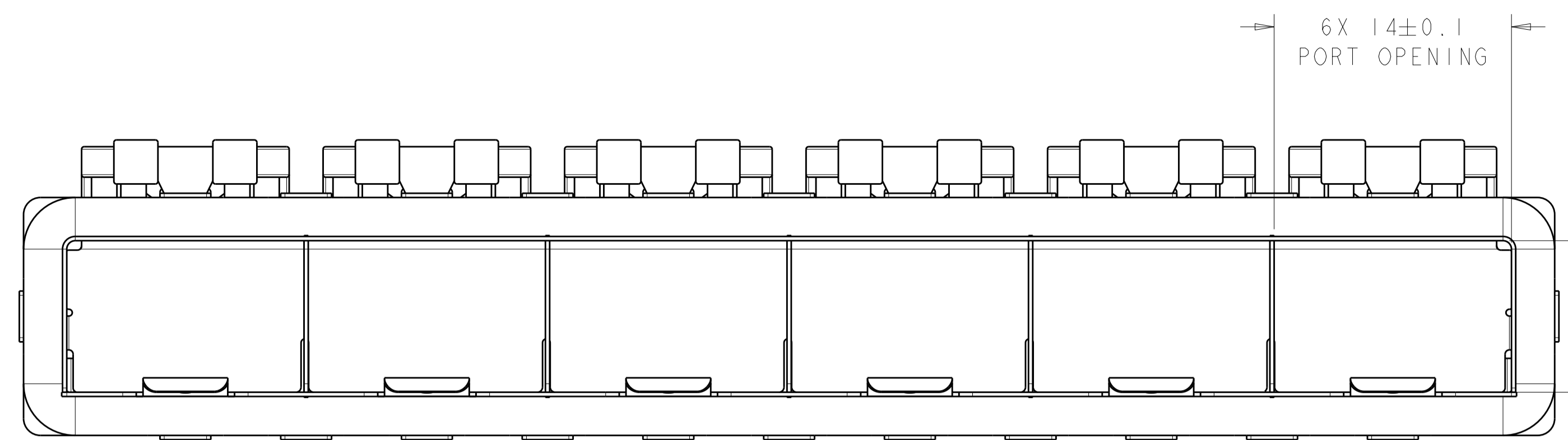
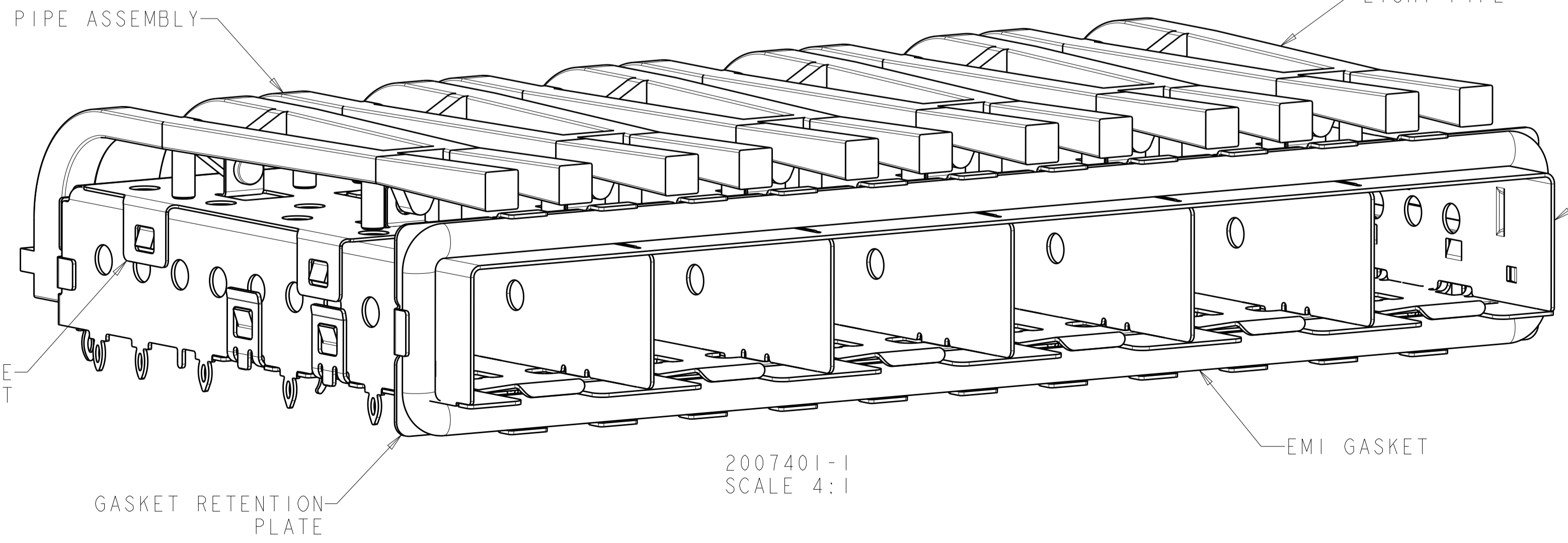


LOC	DIST	REVISIONS					
GP	00	P	LTN	DESCRIPTION	DATE	DWN	APVD
		D		REVISED PER ECO-12-014021	10DEC2012	JY	AC



- △ MATERIAL:
 CAGE ASSEMBLY: 0.25mm THICK NICKEL SILVER ALLOY
 GASKET RETENTION PLATE: STAINLESS STEEL
 GASKET: PLATED FILLED SILICONE
 LIGHT PIPE BRACKET: STAINLESS STEEL
 LIGHT PIPE: POLYCARBONATE, CLEAR
- △ LIGHT PIPE ASSEMBLY SHIPPED UNASSEMBLED TO CAGE ASSEMBLY. CAGE ASSEMBLY TO BE PRESSED INTO THE PCB PRIOR TO ATTACHING THE LIGHT PIPE ASSEMBLY TO THE CAGE.
3. MATES WITH SFP MSA COMPLIANT TRANSCEIVERS.
- △ PADS AND VIAS CHASSIS GROUND.
5. INTERPRETATION OF DATUM REFERENCE FRAME IN ACCORDANCE WITH SECT 4.4.1.1 OF ASME Y14.5M-1994.
- △ MINIMUM PC BOARD THICKNESS = 1.50mm.
- △ HOLE PATTERN REPEATS FOR EACH PORT. SPACING BETWEEN PORTS IS 14.25mm.
- △ DATUM AND BASIC DIMENSION ESTABLISHED BY CUSTOMER.
- △ REFERENCE APPLICATION SPEC. 114-13120, HOLE A, FOR RECOMMENDED DRILL HOLE DIAMETER AND PLATING THICKNESS.
- △ REFERENCE APPLICATION SPEC. 114-13120, HOLE B, FOR RECOMMENDED DRILL HOLE DIAMETER AND PLATING THICKNESS.
11. PRODUCT COMPLIES WITH SPECIFICATION SFF-8433 IMPROVED PLUGGABLE FORM FACTOR FOR SFP+ GANGED CAGES.

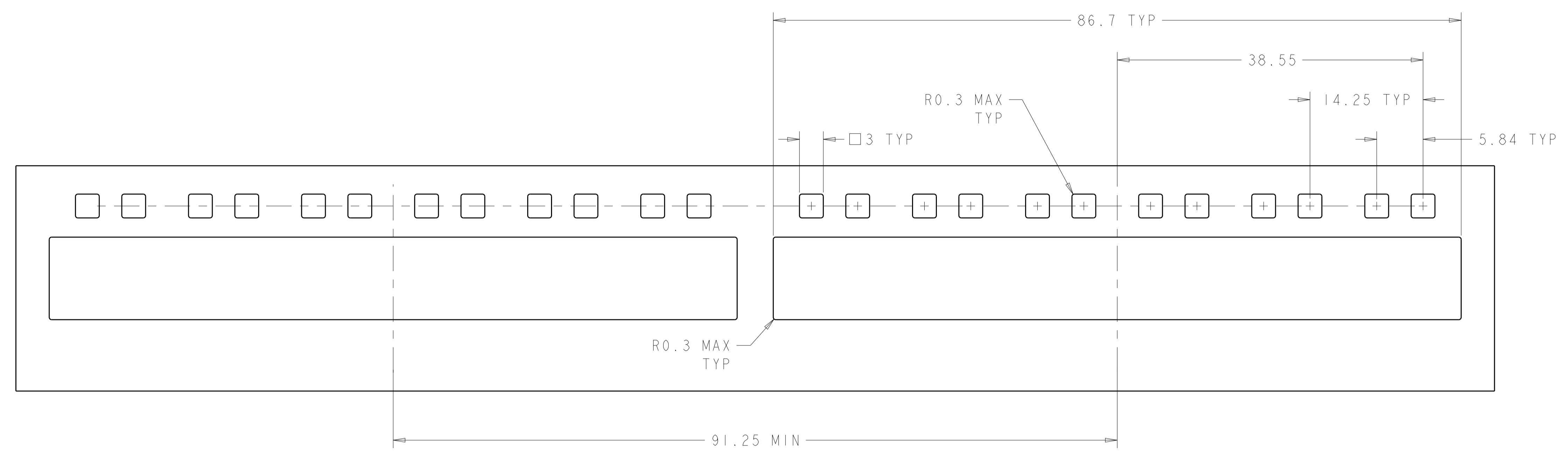


2007401-1
SCALE 4:1

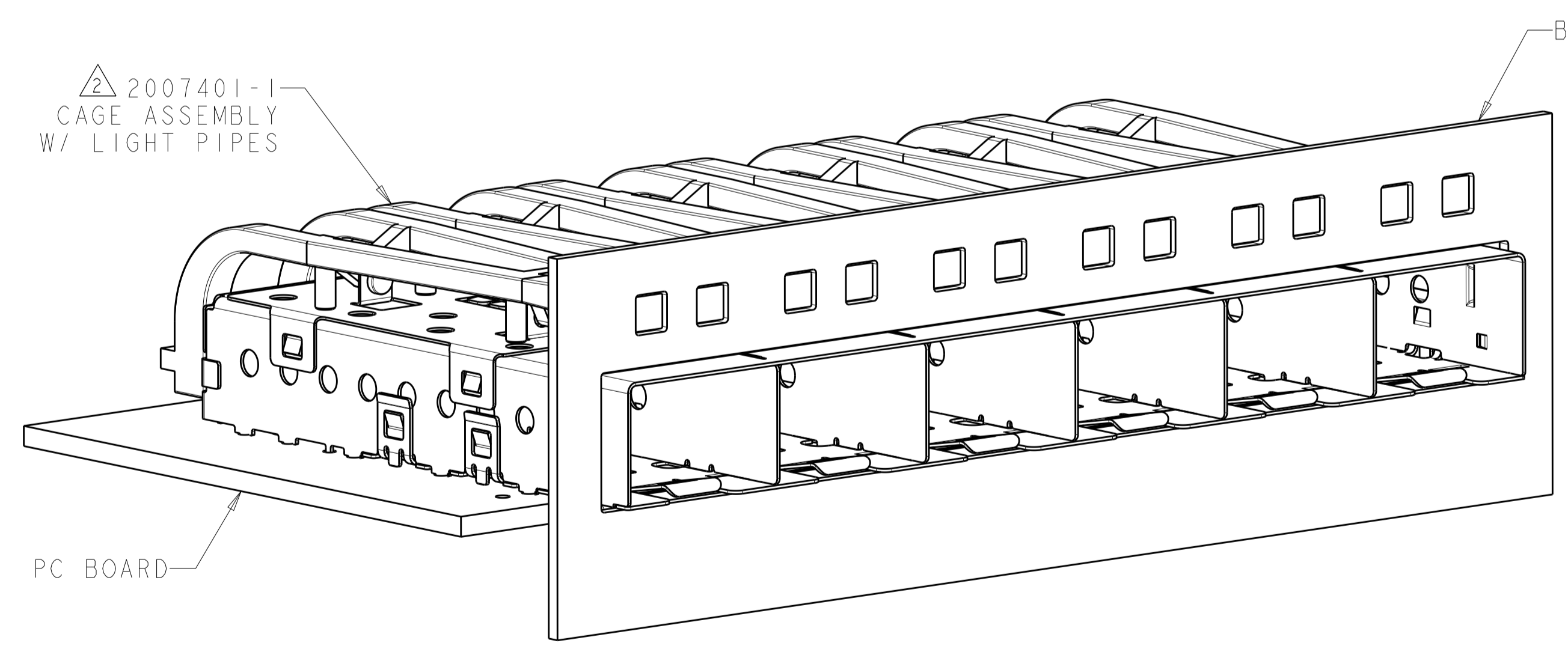
2007401-1
PART NUMBER

THIS DRAWING IS A CONTROLLED DOCUMENT.		DWN: Z.M.BEAM 25OCT2007	TE Connectivity
DIMENSIONS: mm		CHK: M.R.SCHMITT 25OCT2007	
TOLERANCES UNLESS OTHERWISE SPECIFIED:		APVD: R.H.WERTZ 25OCT2007	
0 PLC ±0.1 1 PLC ±0.1 2 PLC ±0.1 3 PLC ±0.1 4 PLC ±0.1 ANGLES ±1°		NAME: SFP+ 1X6 CAGE ASSEMBLY PRODUCT SPEC: 108-2364 APPLICATION SPEC: 114-13120 WEIGHT: - Customer Drawing	
MATERIAL: △		SIZE: A1	CAGE CODE: 2007401 SCALE: 4:1 SHEET: 1 OF 3 REV: D

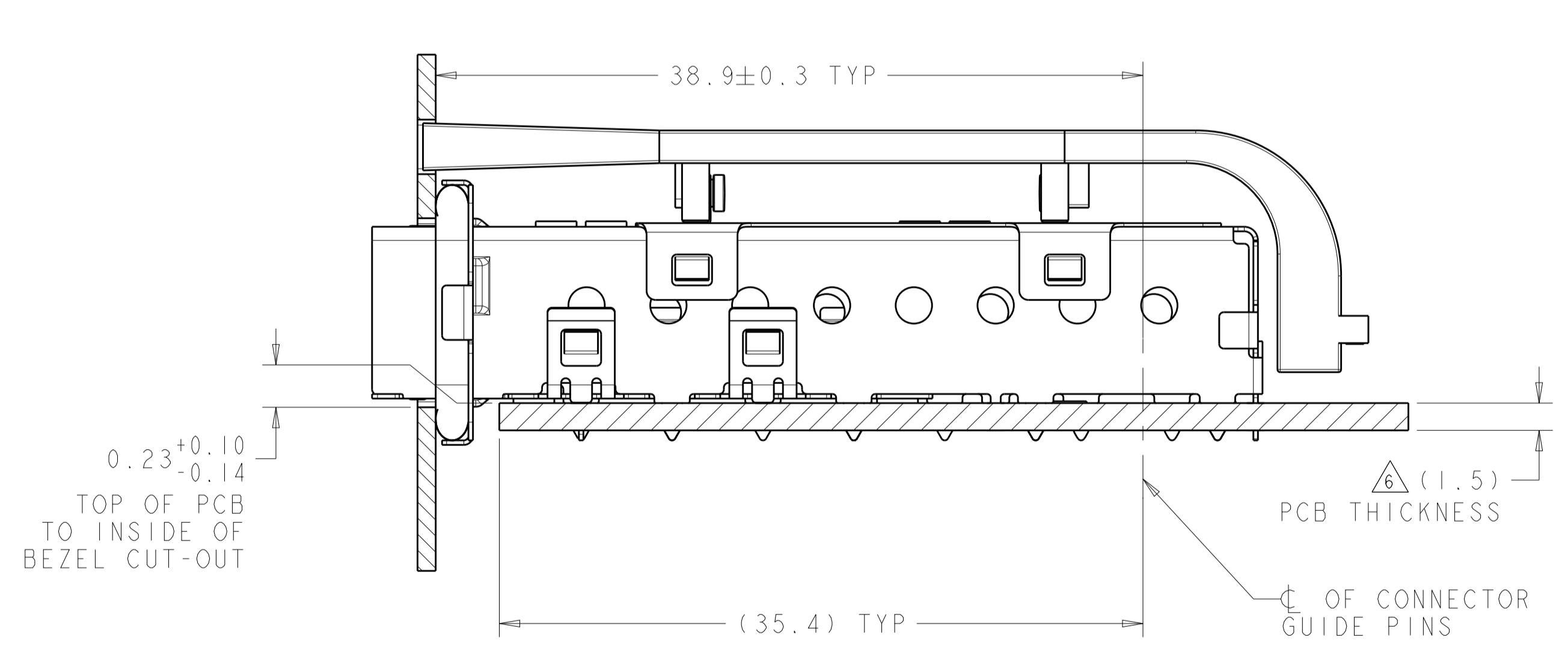
LOC	DIST	REVISIONS					
GP	00	P	LTN	DESCRIPTION	DATE	DMN	APVD
		-		SEE SHEET 1	-	-	-



RECOMMENDED BEZEL CUTOUT
 SCALE 3:1



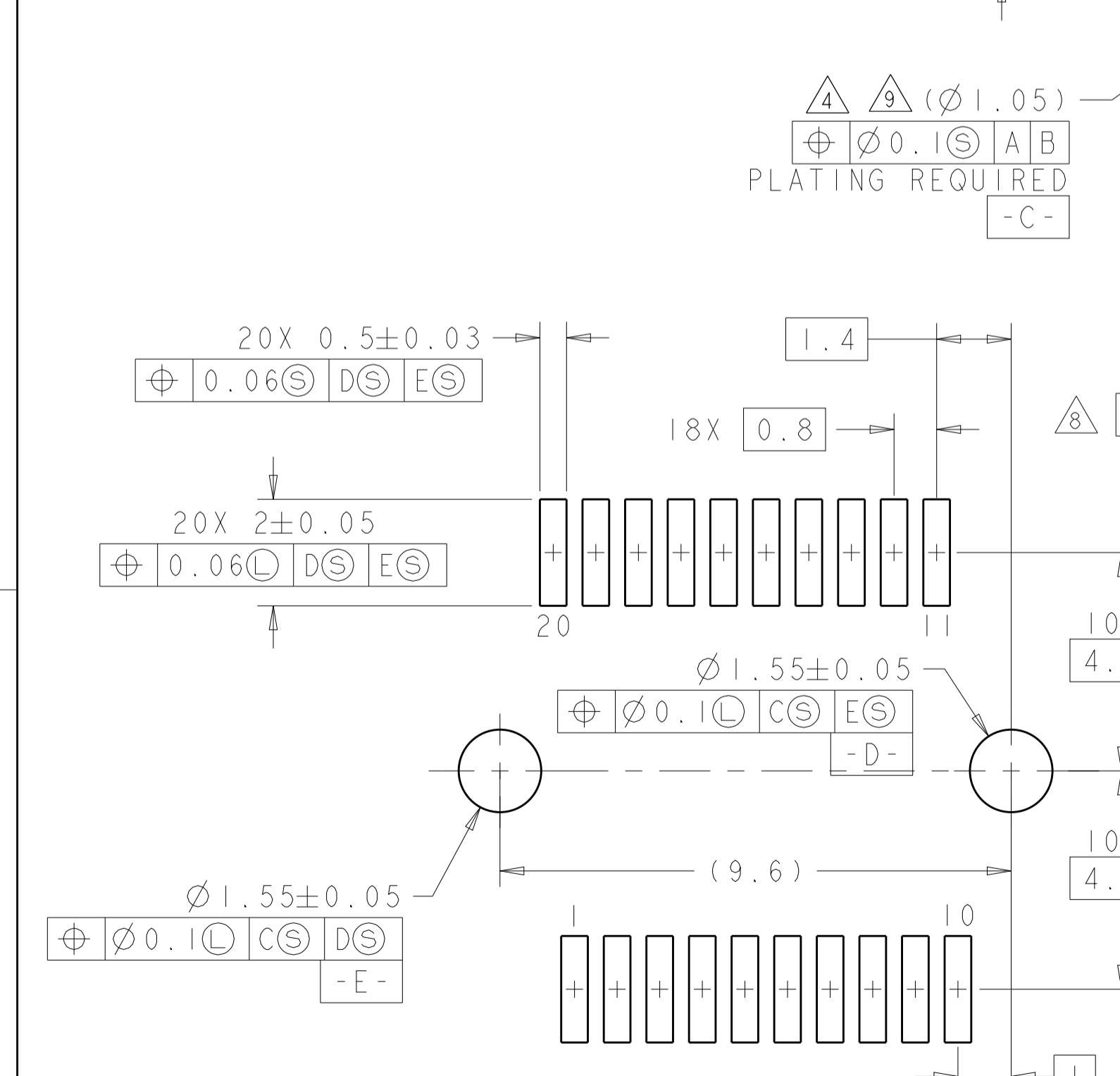
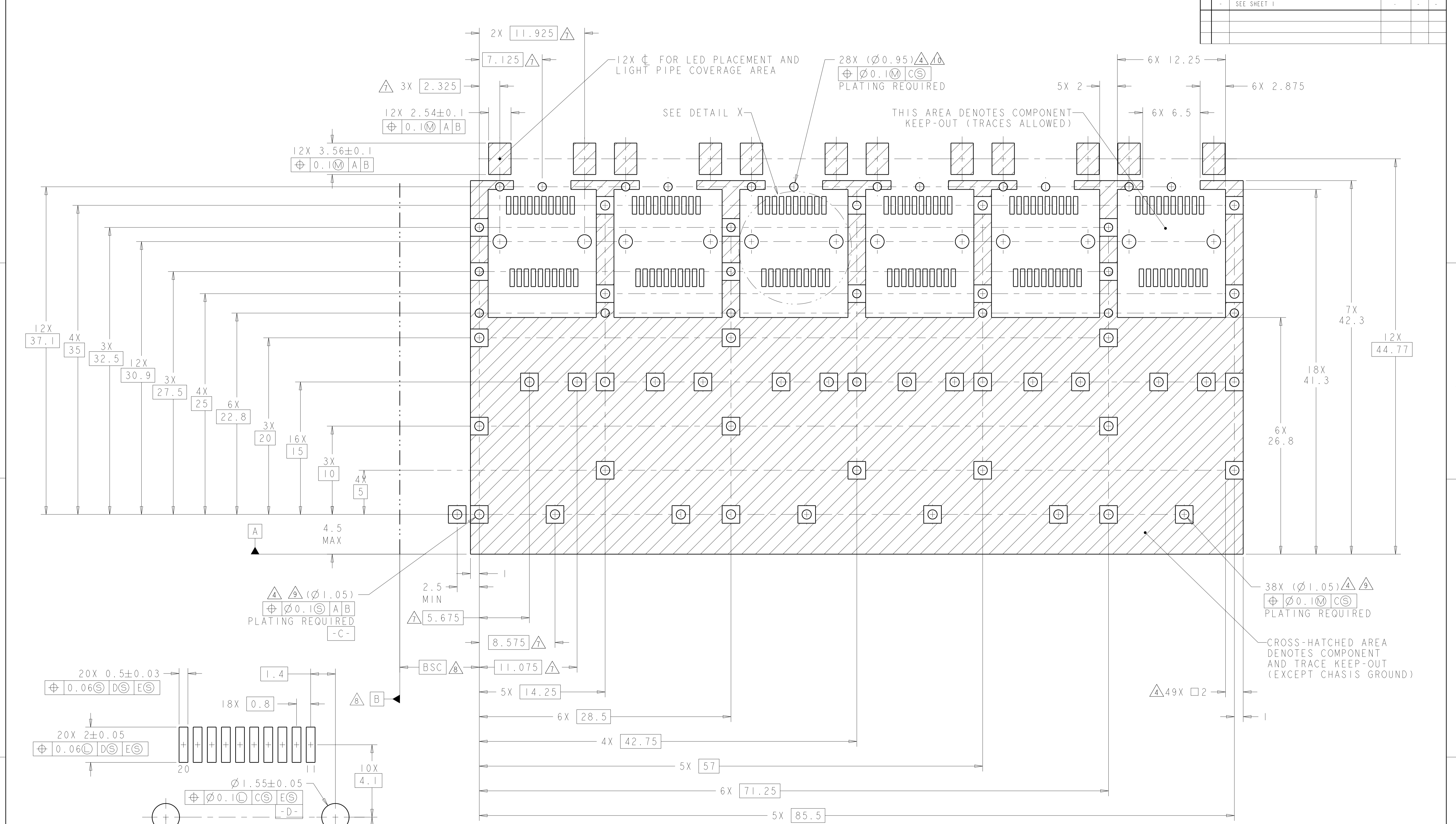
2007401-1
 MOUNTED ON PC BOARD SHOWN
 THRU RECOMMENDED BEZEL
 SCALE 3:1



2007401-1
 MOUNTED ON PC BOARD SHOWN
 THRU RECOMMENDED BEZEL

THIS DRAWING IS A CONTROLLED DOCUMENT.		DMN Z. M. BEAM	25OCT2007	STE TE Connectivity
DIMENSIONS: mm		CHK M. R. SCHMITT	25OCT2007	
TOLERANCES UNLESS OTHERWISE SPECIFIED:		APVD R. H. WERTZ	25OCT2007	NAME SFP+ 1X6 CAGE ASSEMBLY PRESS FIT, EMI GASKET, W/ REDUCED LENGTH SQUARE LIGHT PIPES
0 PLC ±0.1		PRODUCT SPEC	108-2364	
1 PLC ±0.1		APPLICATION SPEC	114-13120	SIZE A1
2 PLC ±0.1		WEIGHT	-	CAGE CODE 00779
3 PLC ±0.1		FINISH	-	DRAWING NO. 2007401
4 PLC ±0.1		Customer Drawing	SCALE 4:1	SHEET 2 OF 3
ANGLES ±1°				REV D

LOC	DIST	REVISIONS		
GP	00	REV	DATE	APPROV
-	-	SEE SHEET 1		
-	-	-	-	-



DETAIL X
 RECOMMENDED PT CONNECTOR LAYOUT
 6X INDIVIDUALLY
 SCALE 10:1

RECOMMENDED PCB CONFIGURATION
 WITH KEEP-OUT AREAS
 SCALE 5:1

THIS DRAWING IS A CONTROLLED DOCUMENT.		DWN: Z.M.BEAM 25OCT2007 CHG: M.B.SCHMITT 25OCT2007 APVD: R.H.WERTZ 25OCT2007	STE TE Connectivity		
DIMENSIONS: mm		PRODUCT SPEC: 108-2364 APPLICATION SPEC: 114-13120 WEIGHT: - Customer Drawing	NAME: SFP+ 1X6 CAGE ASSEMBLY PRESS FIT, EMI GASKET, W/ REDUCED LENGTH SQUARE LIGHT PIPES		
TOLERANCES UNLESS OTHERWISE SPECIFIED: 0 PLC ±0.1 1 PLC ±0.1 2 PLC ±0.1 3 PLC ±0.1 4 PLC ±0.1 ANGLES ±0.1°		SIZE: A100779C=2007401 SHEET 3 OF 3 SCALE 4:1 REV D			