



REED SWITCH DEVELOPMENTS CORP.

2524 Norwood Court

Racine, WI 53403

Ph: (262)883-9060

sales@reedswitchdevelopments.com

SPECIFICATION SHEET

2020-1960-100

Alternate Part Numbers:

AM2020-1960-10-01

3730-2020-1960-100-ND

Active / Equivalent Part Numbers:

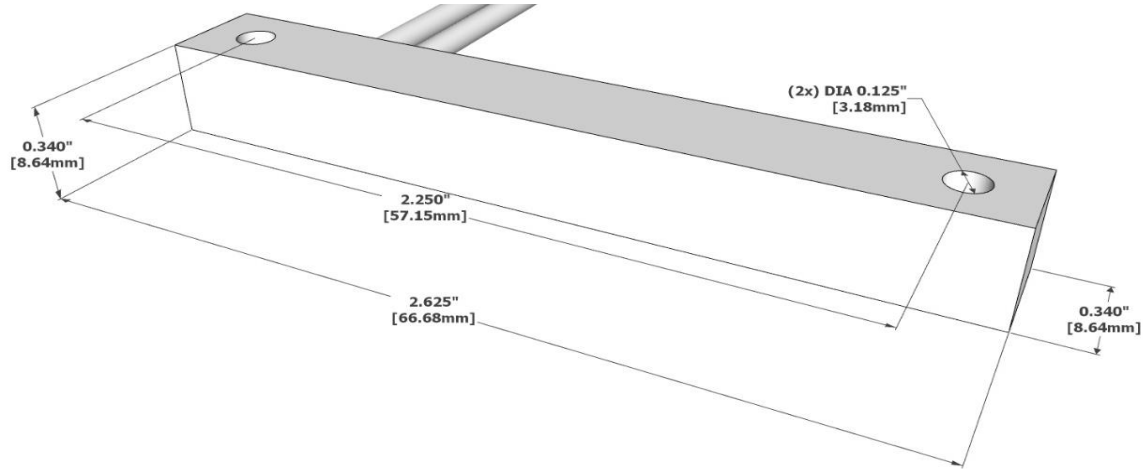
2020-1960-100 - Magnetic Reed Sensor Only

AM2020-1960-10-01 - Magnetic Reed Sensor Only

3730-2020-1960-100-ND - Magnetic Reed Sensor Only

Sensor (Reed) - Specifications		1960
Physical	Configuration	SPST
	Form	A
	Contact Position	CENTER
	Glass L	24.50 mm
	Glass D	3.80 mm
	Total L*	55.00 mm
	Wire D	0.80 mm
	Gap Location	CENTER
	Mount Spec*	THRU
	Contact Material	RHODIUM
	Max Vibration Resistance	35 G
	Max Shock Resistance (11ms)	50 G
	Lead Tensile Strength	N/A KG
Operating	Pull in (+/- 2AT)*	35 - 40 AT
	Drop out*	15 AT
	Operate Time	2.50 ms
	Bounce Time	0.50 ms
	Release Time	0.10 µs
	Resonant Frequency	2400 Hz
	Max Operating Frequency	200 Hz
	Operating Temperature Range	-40 - 105 °C
Electrical	Storage Temperature	N/A °C
	DC Contact Rating	60 W
	AC Contact Rating	60 VA
	DC Switching Voltage	400 VDC
	AC Switching Voltage	400 VAC
	DC Switching Current	3.00 A
	AC Switching Current	3.00 A
	DC Max Carry Current	4.00 A
	AC Max Carry Current	4.00 A
	Min Breakdown Voltage	1000 VDC
	Max Initial Contact Resistance	80 mOhm
	Typical Initial Contact Resistance	N/A mOhm
	Max Contact Capacitance	0.50 pF
Min Insulation Resistance	10 ¹¹ Ohm	

* Pre-processed, bare reed element



All measurements are in Inches [millimeters]

Sensor - Wire/Cable Characteristics (cont.)

Type	Wire
Conductor Count	2
Length	6.0"/152.4mm
Colors	BLK
Insulation Material	PVC
Gauge	22 AWG
Stranded Copper	7 STR-TC
Maximum Temp	105°C

Housing Characteristics 2020

Rectangular w/ Mounting Holes	
Length	2.625"/66.68mm
Width	0.340"/8.64mm
Height	0.340"/8.64mm
Material	Celanex 3316

Standard Sensor/Actuator - Min. Actuation Distance

2020-4100-000	0.69"/17.5mm
---------------	--------------

Assembly Certifications

UL Recognized (File #: E102207)	Y
RoHS / Reach Compliant	Y
Conflict Free Material	Y

REV DATE: 04/20/2023

DISCLAIMER NOTICE: INFORMATION FURNISHED IS PROPRIETARY, AND IS BELIEVED TO BE ACCURATE AND RELIABLE, AND IS SUBJECT TO CHANGE WITHOUT NOTICE. IT SHALL BE THE RESPONSIBILITY OF THE BUYER TO ENSURE THAT THE GOODS ARE SUFFICIENT AND SUITABLE FOR THE PURPOSE OR PURPOSES INTENDED (WHETHER BY THE BUYER OR BY ANY THIRD PARTY) AND THAT THEIR CAPACITY AND PERFORMANCE IS NOT ADVERSELY AFFECTED BY ANY ITEMS USED IN THEIR INSTALLATION (WHERE RELEVANT) AND/OR IN CONNECTION WITH THEM.

WBE Certified - State of Wisconsin - MFR CAGE CODE: 32604

www.reedswitchdevelopments.com