



# ATP22 Series Anti-Vandal Sealed Pushbutton Switch

Pushbutton  
A

## Features/Benefits

- Momentary or Lock version
- IP67 sealed & IK10 (Stainless steel bushing)
- Capable of up to 3A resistive load
- 50,000 life cycle at full load
- Various colors of LED illuminate indicator
- Choices of pushbutton with symbol on spot, ring or power logo

## Typical Applications

- Control Panels including car park and traffic light
- Industrial Instruments
- Lifts / Escalator
- Communication equipment
- Alarm, safety and security systems



CK  
US

## Specifications

FUNCTION: Single pole and double poles  
CONTACT ARRANGEMENT: N.O. and N.C.  
MOUNTING TYPE: Threaded front panel mount  
TORQUE FOR THREADED BODY: 5-14 Nm

## Mechanical

OPERATING LIFE: Momentary 1,000,000 cycles  
Self-lock 500,000 cycles  
TOTAL TRAVEL: about 3.2 mm  
OPERATING FORCE: 1 pole 2.5 ± 1N  
2 pole 3.5 ± 1N

## Electrical

CONTACT RATING: 1th 5A/250VAC  
3A / 250VAC  
3A / 28VDC  
OPERATING LIFE: 50,000 make-and-break cycles at full load  
DIELECTRIC STRENGTH: 2,000 V RMS @ sea level  
INSULATION RESISTANCE: 1,000 MΩ min. @ 500 VDC  
INITIAL CONTACT RESISTANCE : 50 mΩ max @1A 12VDC

## Materials

BUSHING: Stainless steel / Aluminum alloy  
BASE: PBT (UL 94-A0), PC (UL 94-V2)  
ACTUATOR: PC; Stainless steel / Aluminum alloy  
INTERNAL ASSEMBLY: POM / PA66  
SPRING: Steel  
SEALING / O-ring: Silicone  
TERMINALS: Brass with silver or gold plated  
CONTACT: Copper, silver plated

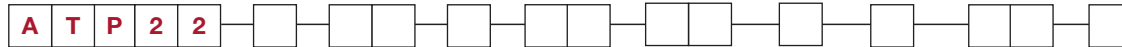
## Operating Environment

OPERATING TEMPERATURE: -20°C to +55°C  
SEALING / PROTECTION: IP67 / IK10 (Stainless steel bushing)

**NOTE:** Specifications and materials listed above are for switches with standard options. For information on specific and custom switches, please contact Customer Service.

## Build-A-Switch

To order, simply select desired option from each category and place in the appropriate box.



Designation  
**ATP22** Series

Actuator Style  
**S** Standard

Actuator Indicator  
**L0** Without LED  
**L3** Moving ring  
**L6** Ring LED\*  
**L7** Ring LED + power logo\*\*  
**L8** Ring LED + power logo\*\*\*

### Illumination

Color	Dual color
<b>0</b> Without LED	<b>A</b> Red & Green
<b>2</b> White	<b>B</b> Red & Blue
<b>3</b> Red	<b>D</b> Blue & Yellow
<b>5</b> Yellow	<b>G</b> Red & Yellow
<b>6</b> Green	<b>H</b> Green & Yellow
<b>7</b> Blue	<b>J</b> Orange & Green

### LED voltage (20mA)

**00** Without LED  
**03** 3V  
**06** 6V  
**12** 12V  
**24** 24V  
**36** 36V  
**A1** 110V AC  
**A2** 220V AC

Terminal plating  
**Q** Silver  
**G** Gold

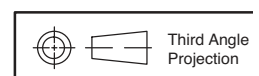
Termination  
**03** STD solder lug  
**W1** Wire lead 500mm\*\*\*\*\*  
**W2** Wire lead 1,000mm\*\*\*\*\*

Mechanical function  
**A** Momentary  
**E** Lock

Contact arrangement  
**S** SPDT  
**D** DPDT

Bushing type  
**B0** Stainless (Round)  
**B3** Al alloy: black anodized (Round)  
**M0** Stainless (Double D-shape)\*\*\*\*

\* Available on ring color CAP of red/green/blue only  
\*\* Power logo and ring with clear color CAP available on double D-shape bushing only  
\*\*\* Power logo and ring with red/green/blue color CAP available on double D-shape bushing only  
\*\*\*\* Not available on L0/L3/L6 actuator indicator  
\*\*\*\*\* Available upon request, please contact your sales representative for details



Dimensions are shown: mm (inches)  
Specifications and dimensions subject to change

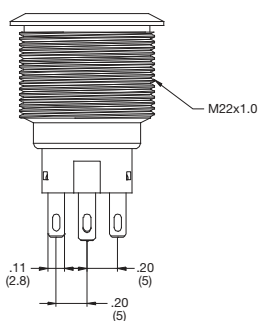
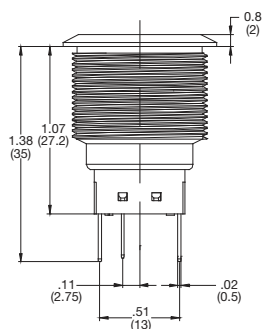
# ATP22 Series Anti-Vandal Sealed Pushbutton Switch



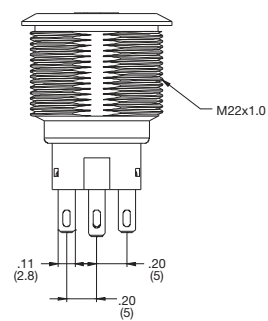
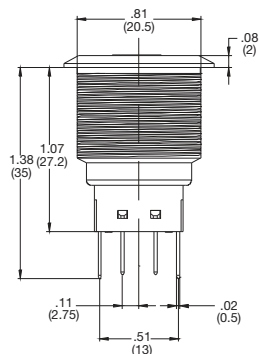
A  
Pushbutton

## STANDARD VIEW

ROUND BUSHING

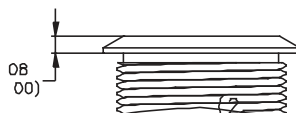


DOUBLE-D BUSHING



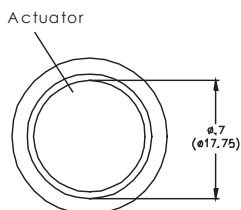
## ACTUATOR STYLE

**S** STANDARD

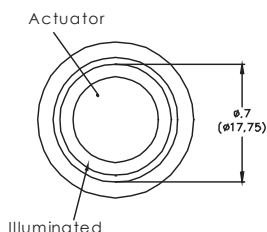


## ACTUATOR INDICATOR

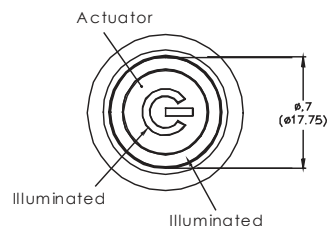
**L0** WITHOUT LED



**L3 & L6** RING LED



**L7 & L8** POWER & RING





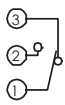
# ATP22 Series Anti-Vandal Sealed Pushbutton Switch

Pushbutton

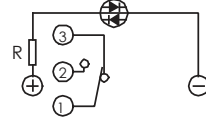
A

## CIRCUIT

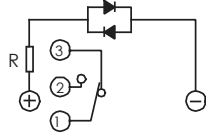
SPDT



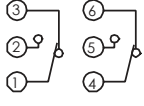
SPDT - SINGLE COLOR LED



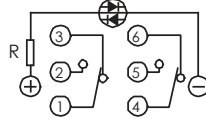
SPDT - DUAL COLOR LED



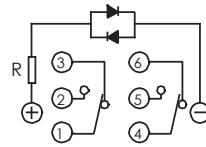
DPDT



DPDT - SINGLE COLOR LED

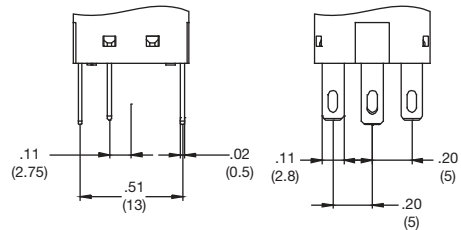


DPDT - DUAL COLOR LED

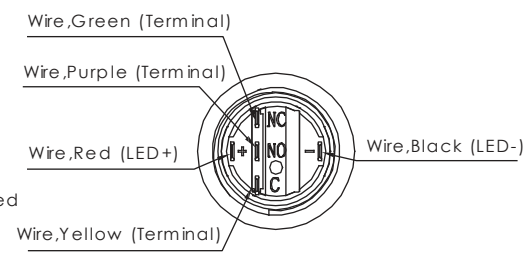
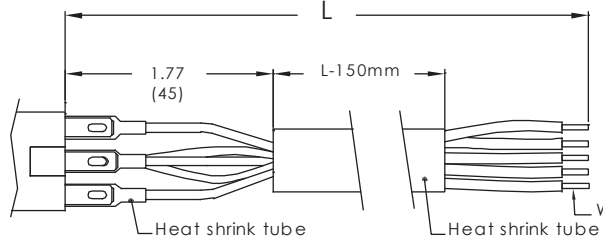


## TERMINATION

**03 SOLDERLUG**



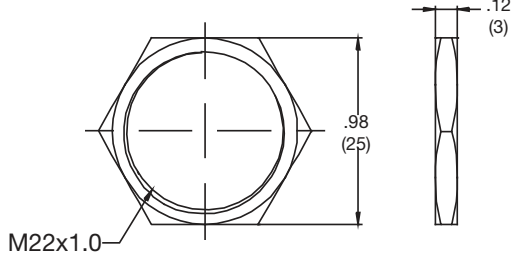
**W1 OR W2 WIRE LEAD**



## HARDWARE

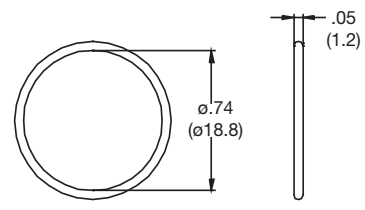
**HEX NUT**

Order PN: ATP22-HN



**O RING**

Order PN: ATP22-OR



5 May 21

Dimensions are shown: mm (inches)  
Specifications and dimensions subject to change