

Customer Information Sheet

DRAWING No.: M80-879XXXX

SHEET 2 OF 2

IF IN DOUBT - ASK

©

NOT TO SCALE

THIRD ANGLE PROJECTION

ALL DIMENSIONS IN mm

SPECIFICATIONS:

MATERIAL:

MOULDING = GLASS-FILLED PBT,
UL94V-0, BLACK

CONTACTS = PHOSPHOR BRONZE

LATCH = BERYLLIUM COPPER

FINISH:

CONTACTS:

05 = 0.75µ GOLD

22 = 0.75µ GOLD ON CONTACT AREA.

3.0µ 90/10 TIN/LEAD ON TAILS

LATCH = 1.25µ NICKEL

MECHANICAL:

DURABILITY = 500 OPERATIONS

INSERTION FORCE (∅0.5mm GAUGE) = 2.8N MAX

WITHDRAWAL FORCE (∅0.5mm GAUGE) = 0.2N MIN

PACKING:

TUBE

ELECTRICAL:

CURRENT RATING AT 25°C = 3.0A MAX.

CURRENT RATING AT 85°C = 2.2A MAX.

WORKING VOLTAGE = 800V AC/DC

VOLTAGE PROOF = 1200V AC/DC

CONTACT RESISTANCE (INITIAL) = 20 mΩ MAX.

CONTACT RESISTANCE (AFTER CONDITIONING) = 25 mΩ MAX.

INSULATION RESISTANCE (INITIAL) = 1000 MΩ MIN.

INSULATION RESISTANCE (AFTER CONDITIONING) = 100 MΩ MIN.

ENVIRONMENTAL:

TEMPERATURE RANGE = -55°C TO +125°C

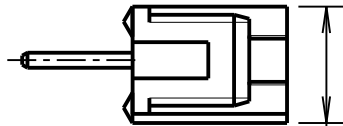
FOR COMPLETE SPECIFICATION, SEE COMPONENT SPECIFICATION C005XX (LATEST ISSUE)

NOTES:

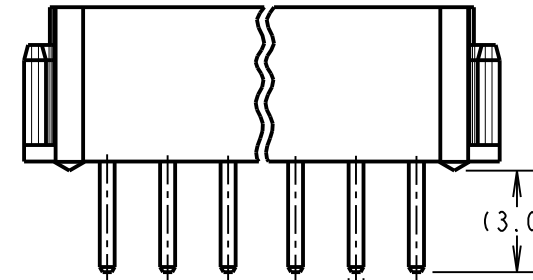
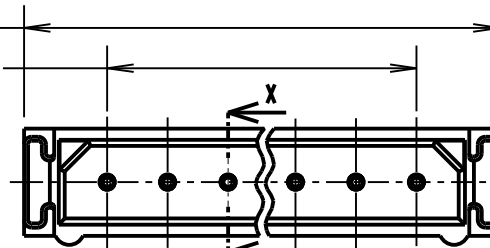
- 2-OFF STRAIN RELIEF STRAPS M80-0030006 CAN BE ORDERED SEPARATELY IF REQUIRED.
- FOR RoHS COMPLIANT EQUIVALENT PRODUCT USE M80-852XXXX.

2.00 x No. OF WAYS + 3.55 MAX

2.00 x No OF PITCHES



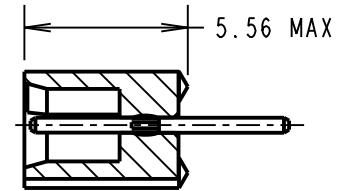
3.98 MAX



2.00 TYP

(3.0)

∅0.50 TYP



SECTION X-X

5.56 MAX

2.00 x No. OF PITCHES

2.25 TYP

∅0.80 MAX TYP

4.75

2.00 TYP

∅0.90 MIN TYP
STRAIN RELIEF
STRAP HOLES (OPTIONAL)

RECOMMENDED PCB LAYOUT

BRITISH STANDARD ORDER CODE: TO BS9525 F0033

B5743-1XX-M-T-X

TOTAL No. OF WAYS _____

02 - 07, 17, 22.

FINISH: _____

0 = SELECTIVE GOLD

2 = GOLD

ORDER CODE:

M80-879XXXX

TOTAL No. OF WAYS _____

02 - 07, 17, 22.

FINISH: _____

05 = GOLD

22 = SELECTIVE GOLD

SB	14	06.03.12	11672
NAME	ISS.	DATE	C/NOTE
APPROVED:		S.BENNETT	
CHECKED:		S.FLOWER	
DRAWN:		W.J.BOURNE	
CUSTOMER REF.:			
ASSEMBLY DRG:			

HARWIN

www.harwin.com
technical@harwin.com

THIS DRAWING AND ANY INFORMATION OR DESCRIPTIVE MATTER SET OUT HEREON ARE CONFIDENTIAL AND COPYRIGHT PROPERTY OF THE HARWIN GROUP AND MUST NOT BE DISCLOSED, LOANED, COPIED OR USED FOR MANUFACTURING, TENDERING OR FOR ANY OTHER PURPOSE WITHOUT THEIR WRITTEN PERMISSION.

TOLERANCES

X. = ±1mm
X.X = ±0.25mm
X.XX = ±0.10mm
X.XXX = ±0.01mm

ANGLES = ±5°
UNLESS STATED

MATERIAL:

SEE ABOVE

FINISH:

SEE ABOVE

S/AREA:

mm²

TITLE: DATAMATE 2mm PITCH
VERTICAL MALE PC TAIL SIL
ASSEMBLY - UNLATCHED

DRAWING NUMBER:

M80-879XXXX

SHT
2 OF 2