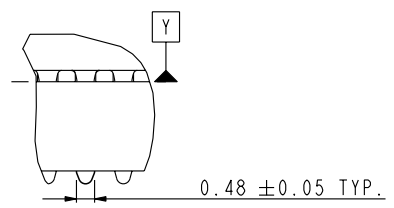
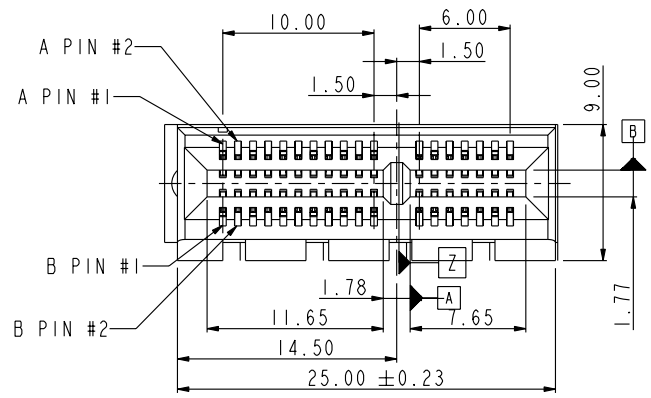
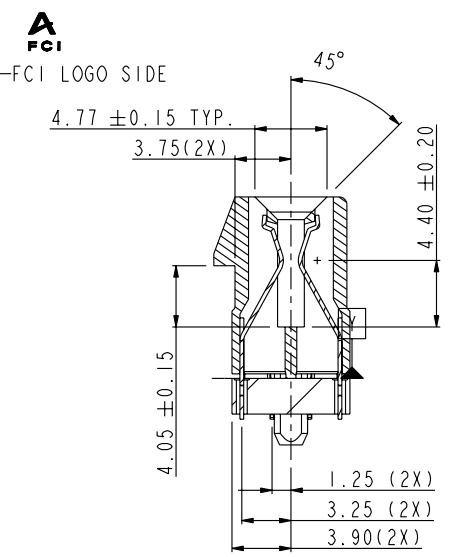
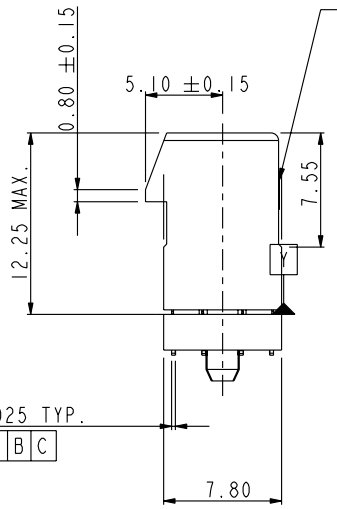
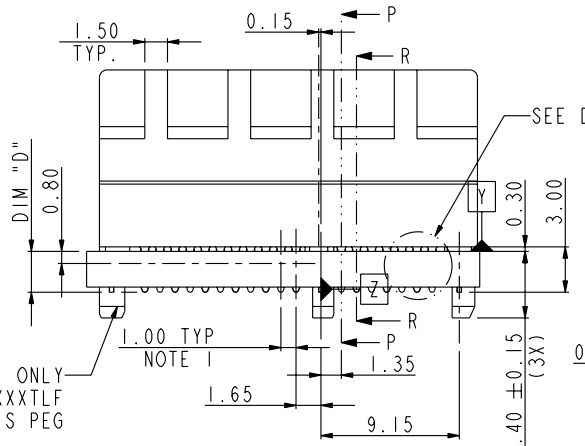




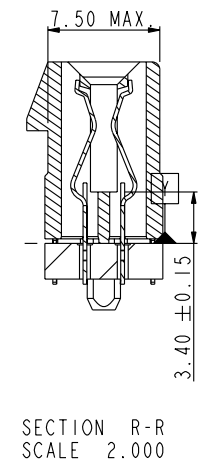
Copyright FCI.



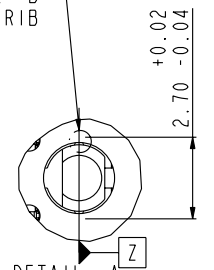
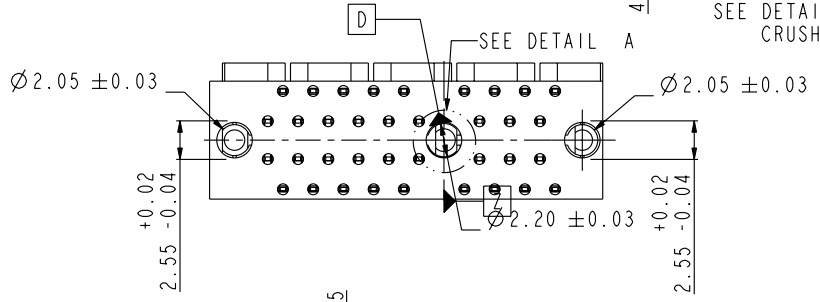
DETAIL T  
SCALE 5.000



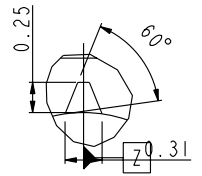
SECTION P-P  
SCALE 2.000



SECTION R-R  
SCALE 2.000



DETAIL A  
SCALE 4.000



DETAIL B  
SCALE 16.000

rev	ecn no	dr	date
A	DG06-0028	K W	01/25/06
B	DG07-0058	P M	02/12/07
C	DG07-0479	C L	11/29/07
D	DG07-0508	C L	12-20-07
-	-	-	-
-	-	-	-
-	-	-	-

www.fciconnect.com		surface	<input checked="" type="checkbox"/>	tolerance std	projection	MM
		TOLERANCES UNLESS OTHERWISE SPECIFIED				
Dr	MAGGIE WU	09/30/05	ANGULAR	0.X	±.3	size A4
Eng	R Y LIU	09/30/05	LINEAR	0.XX	±.2	Scale 1.000
Chr	PAUL WANG	09/30/05	0° ±2°	0.XXX	±.1	ECN
Appr	JOSEPH HSIA	09/30/05	Product family		Spec ref	
FCI		title		dwg no		Rev.
		PCI Express ExpressModule CARD Edge 36Ppress-fit ass'y		10061854		D
		catalog no		CUSTOMER		sheet 1 of 4

1

2

3

4

A

B

C

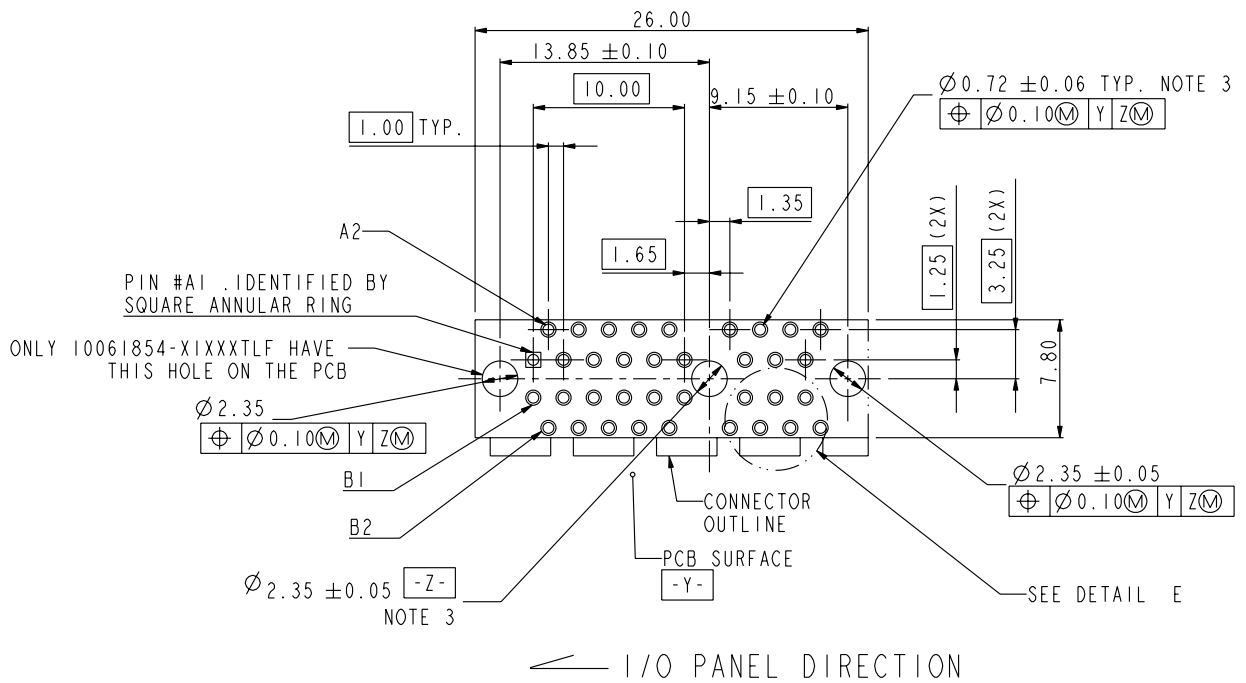
D

A

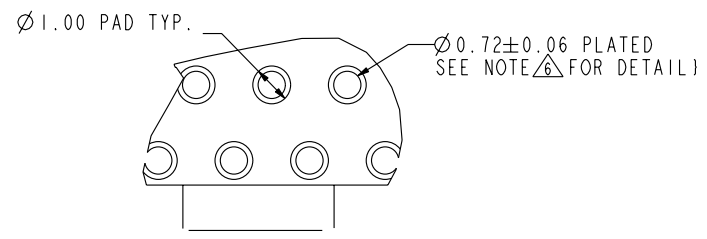
B

C

D



RECOMMENDED FOOTPRINT

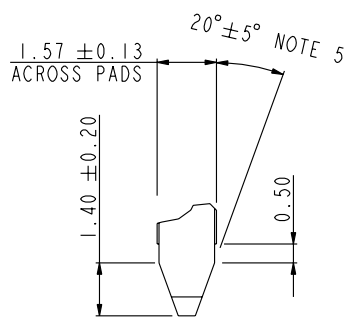
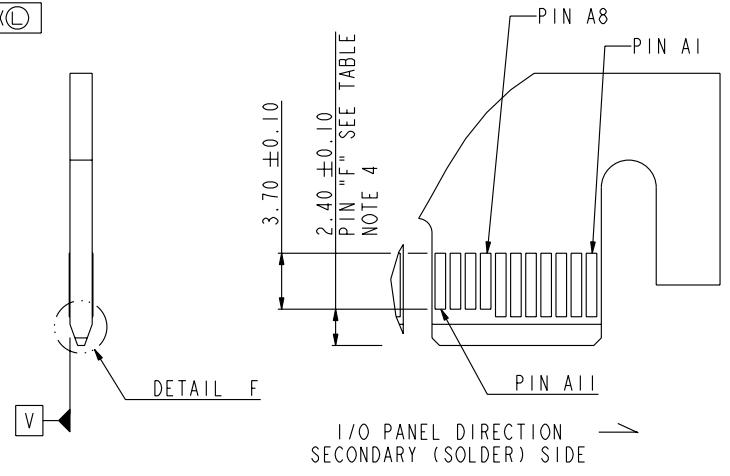
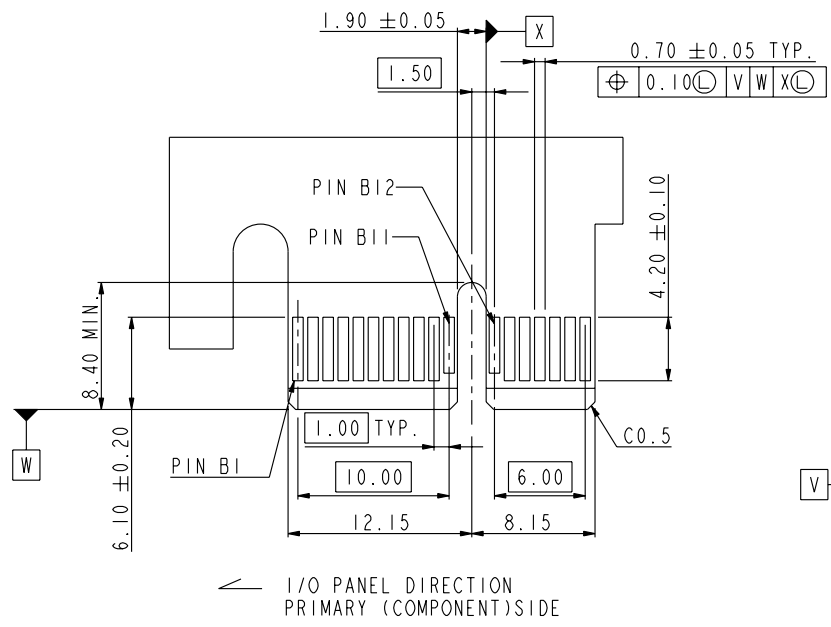


Copyright FCI.

	title	PCI Express ExpressModule CARD Edge 36Ppress-fit ass'y	dwg no	10061854	Rev.	D
	catalog no	*	CUSTOMER	sheet 2 of 4		



Copyright FCI.



DETAIL F  
SCALE 5.000

CONNECTOR LINK WIDE	#POS REF.	"F" NOTE 4
XI	36	A8, A9, A10, A11 B11, B12

	title PCI Express ExpressModule CARD Edge 36Ppress-fit ass'y	dwg no 10061854	Rev. D
	catalog no	* CUSTOMER	sheet 3 of 4

NOTES:

- 1. MATERIAL:
  - HOUSING: HIGH TEMPERATURE NYLON, GLASS FILLED UL94V-0 RATED. SUITABLE FOR REFLOW SOLDERING.
  - TERMINAL: COPPER ALLOY
  - PLATING: 50u" NICKEL UNDERPLATE ALL OVER
  - CONTACT AREA PLATING - SEE PRODUCT NUMBER CODE
  - SOLDER TAIL: TIN - 100u" MIN. OVER 50u" NICKEL OR TIN/LEAD 100u" MIN. SEE PRODUCT NUMBER CODE
- 2. PRODUCT SPECIFICATION: GS-12-319
- 3. THE HORIZONTAL AXIS FOR THE HOLE PATTERN IS ESTABLISHED BY A LINE THROUGH THE CENTER OF THE TWO Ø2.35 HOLES. THE VERTICAL AXIS IS 90° TO THE HORIZONTAL AXIS, THROUGH THE CENTER OF DATUM Z.
- 4. NO TIE BAR PERMITTED FROM CARD EDGE TO LEADING EDGE OF PAD FOR PINS A1 AND PIN NUMBERS "F".
- 5. CHAMFER EDGES MUST BE FREE OF CUTTING BURRS.
- 6. ALL PLATED THRU HOLES SHOULD BE 0.76~0.83 mm DIA DRILLED AND 0.025mm ~ 0.05mm. ELECTRO-DEPOSITED COPPER THK ON THROUGH HOLE WALL.
- 7. RoHS COMPATIBLE PRODUCT SPECIFICATIONS
  - a-PLATING:
    - "LF" MEANS THE PRODUCT IS LEAD-FREE, 2um MINIMUM MATTE TIN OVER 1.27um MINIMUM NICKEL UNDERPLATE.
  - b-MANUFACTURING PROCESS COMPATIBILITY
    - THE HOUSING WILL WITHSTAND EXPOSURE TO 260°C±5°C SOLDER BATH TEMPERATURE FOR 10 SECONDS IN A REFLOW SOLDER APPLICATION WITH A 2.36mm AND 4.19mm MIN THICK CIRCUIT BOARD.

PRODUCT NUMBER CODE

10061854 - X X X X X X X X

HOUSING COLOR OPTIONS  
1-BLACK

PEGS OPTIONS  
0-WITH 2 PLASTIC PEGS  
1-WITH 3 PLASTIC PEGS

TERMINAL PLATING OPTIONS  
0-50u" Ni UNDERPLATE  
30u" Au CONTACT AREA  
100u" TIN TAIL AREA -----RoHS COMPATIBLE

3-50u" Ni UNDERPLATE  
30u" Au CONTACT AREA  
100u" TIN/LEAD TAIL AREA -----NOT RoHS COMPLIANT

LEAD FREE OPTION  
"LF" FOR TERMINAL PLATING OPTION 0  
LEAVE BLANK FOR TERMINAL PLATING OPTION 3

PACKAGING OPTIONS  
T-TRAY PACKAGING

CRUSH RIBS  
0- NO CRUSH RIB  
1- WITH CRUSH RIB ON THE PEGS

TAIL LENGTH OPTIONS

	DIM "D"	SUGGESTED PCB THICKNESS
0	2.00±0.20	2.36
1	3.25±0.20	4.19



Copyright FCI.



PCI Express ExpressModule  
CARD Edge 36Ppress-fit ass'y

catalog no \*

dwg no 10061854

CUSTOMER sheet 4 of 4

Rev. D