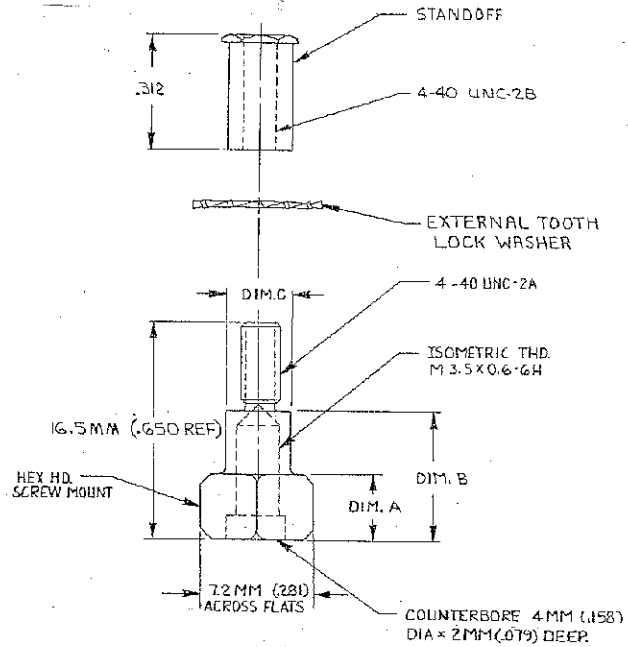


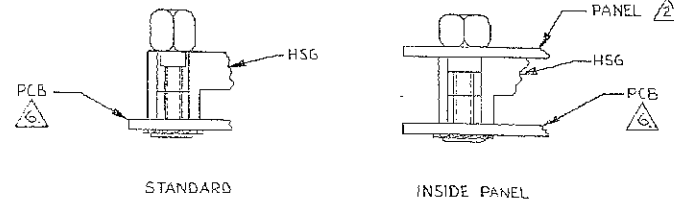
© COPYRIGHT 1978 BY AMP INCORPORATED, HARRISBURG, PA.
 ALL INTERNATIONAL RIGHTS RESERVED. AMP INCORPORATED PRODUCTS
 COVERED BY U. S. AND FOREIGN PATENTS AND/OR PATENTS PENDING.

REVISIONS				LOC	DIST
P	F	ZONE	LTR	AA	20
G			G		
			DESCRIPTION	DATE	APPROVED
			REV: ECN AA-5814	3-10-79	LHB
			H 085: -2; EC 0515-0015-03	4-17-79	DD RM



- PARTS SHIPPED UNASSEMBLED.
- MTG HOLE IN PANEL SHALL BE .189 DIA.
- ALL DIM SHOWN ARE FOR REF ONLY.
- DIM SHOWN IN PARENTHESIS () ARE IN INCHES.
- MATL: STUD MOUNT STANDOFF-CARBON STEEL, BLACK OXIDE COATED; SELF CLINCH STANDOFF-STAINLESS STEEL.
- HOLE IN PC BOARD SHALL BE .171 TO ACCOMMODATE STANDOFF.

SUGGESTED APPLICATIONS



OBSELETE	INSIDE PANEL	4.7 MM (.185)	8.5 MM (.335)	4.9 MM (.193)	552767-2
	STANDARD	4.2 MM (.165)	8.6 MM (.339)	6.5 MM (.256)	552767-1
	MTG TYPE	DIM. C	DIM. G	DIM. A	PART NO

UNLESS OTHERWISE SPECIFIED DIMENSIONS ARE IN INCHES. TOLERANCES ON: DECIMALS ± .001 ANGLES ± .1°	CONTRACT NO	AMP INCORPORATED Harrisburg, Pa.		
	DRD 2-21-78	NAME		
	CHK RE Raich 2/22/78	KIT, SCREWLOCK, VERT MTG, METRIC		
	APPD S. H. 2/22/78	SIZE CODE IDENT NO DRAWING NO		
MATERIAL	APPD R. D. 4/6/79	C	00779	552767
FINISH	DSGN APPD	SCALE	SHEET 1 OF 1	
	OTHER APPD	CUSTOMER DRAWING		