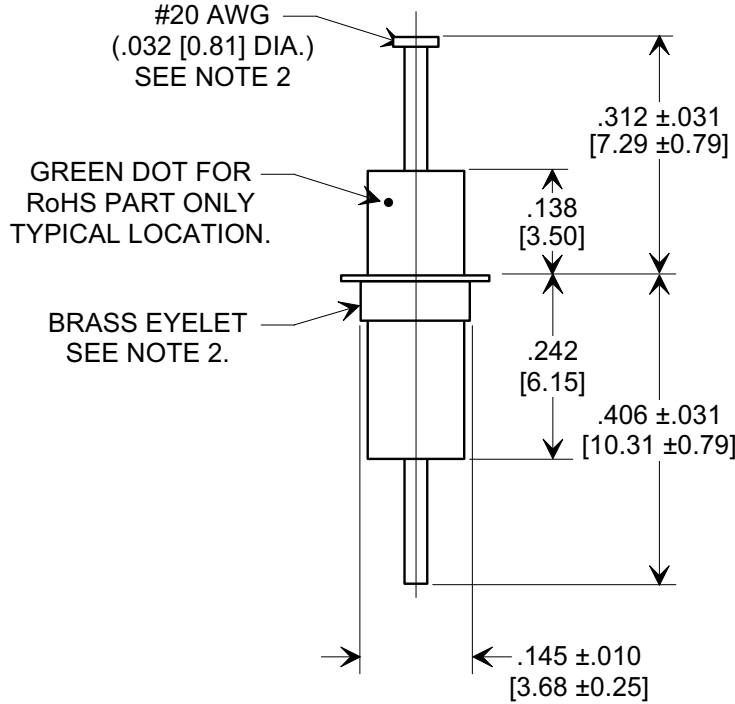
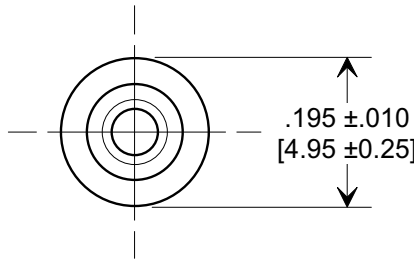
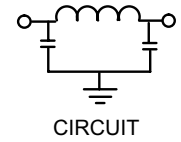
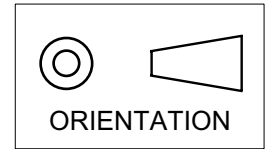


MARKETING SALES DRAWING

DIMENSIONS IN INCHES - DO NOT SCALE THIS DRAWING
DIMENSIONS IN METRIC - []

Electrical Testing
 per Tusonix standard
 test plans and Mil-Std-202
 Test Methods.



Notes:

- Tusonix Standard part number: 4101-051.
 Tusonix RoHS compliant part number: 4101-051 LF.
 Customer must specify Standard or RoHS part number when ordering.
- Lead finish: Silver Plated.
- Part Marking: Standard has no marking. RoHS part: Green Dot.

CAP. (pF)	WORKING VOLTAGE		CURRENT Idc.	I.R. MIN. @ 100 (VDC.)	DWW (VDC)	MINIMUM NO LOAD INSERTION LOSS (dB) AT 25°C PER MIL-STD-220			
	85°C	125°C				10MHz	100MHz	1GHz	10GHz
1500/ 3000	350	200	10A	10 G Ω	700	3	45	70	70

X-2015 Rev-0 REVISION RECORD Original Release C.O. 970908-2-01 ADDED NOTES, METRIC, IR & DWV. S.M. 09-15-05 20050829-1-23	0	1	--TOLERANCES-- Unless Otherwise Specified		Title <h2 style="text-align: center;">EYELET STYLE EMI FILTER</h2>	
	DECIMAL ±.015 [0.38]		Drawn L.E. 09-10-97		Scale 4 X	
	ANGLES ±		Approved B.Mc. 09-10-97			
	TUSONIX TUCSON, ARIZONA		A	4101-051		