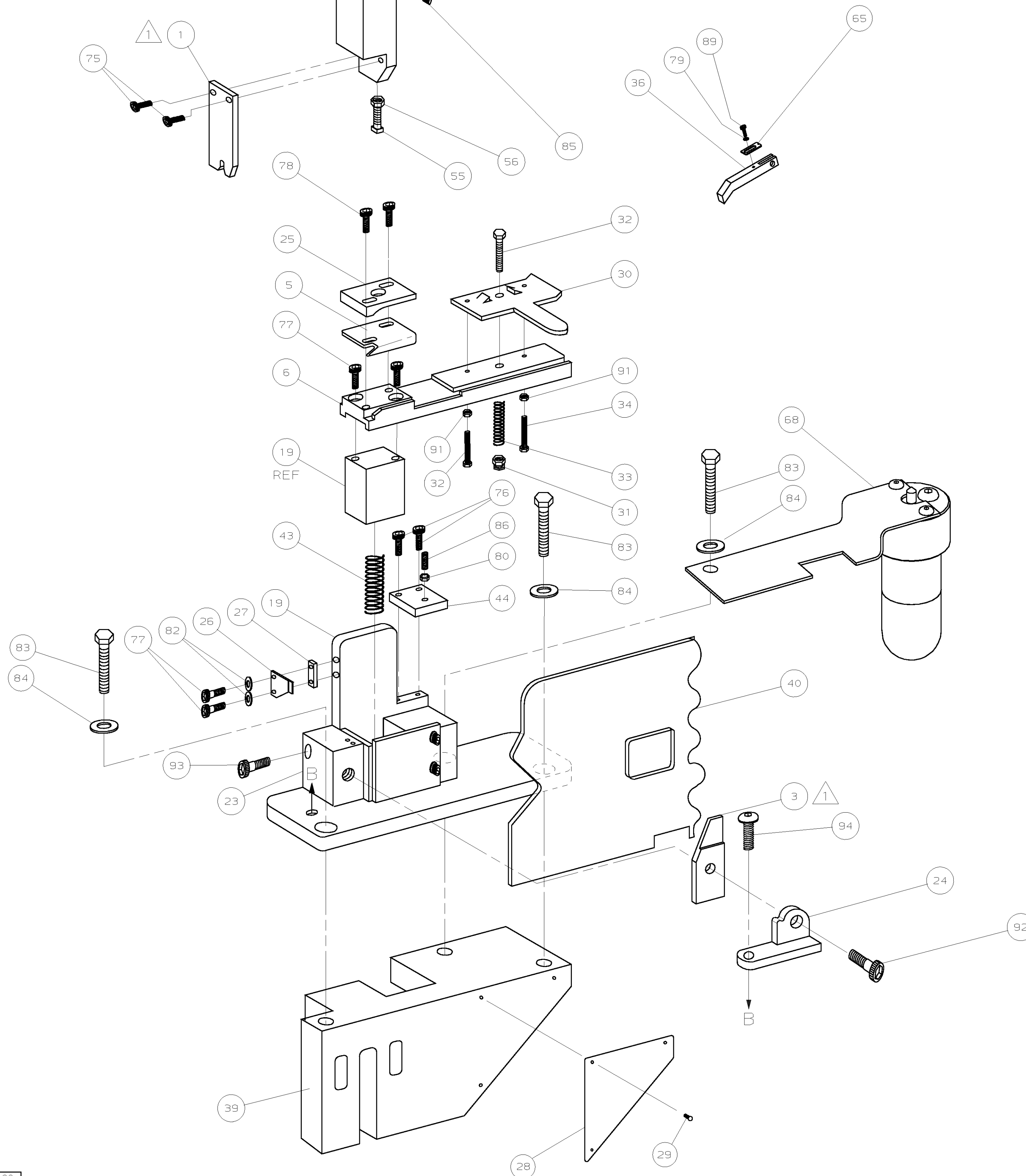


PART NUMBER	REV	FIRST USED
670786-3	R	1-471273-3

- 1 RECOMMENDED SPARE PARTS.
- 2 CRIMP HEIGHT FOR INITIAL SET-UP ONLY.



TERMINAL NAME:	
40504	LENGTHWISE THRU SPLICE
40868	
40881	
40933	
41132	
42262	
42931	
61492	
41397	
TERM APPL SPEC	114-2088

CRIMPING DATA			
CRIMP HEIGHT	WIRE SIZE		
.076	2 (18)		
CRIMP	SIZE	TYPE	RANGE
WIRE	.120	F	2048-5250 CMA
INSUL			
FEED	APPL INST	SET UP GAGE	LAYOUT
.202			
WIRE STRIP LENGTH			

-	-	-	-	-	129
-	-	-	-	-	128
-	-	-	-	-	127
-	-	-	-	-	126
-	-	-	-	-	125
-	-	-	-	-	124
-	-	-	-	-	123
-	-	-	-	-	122
-	-	-	-	-	121
-	-	-	-	-	120
-	-	-	-	-	119
-	-	-	-	-	118
-	-	-	-	-	117
-	-	-	-	-	116
-	-	-	-	-	115
-	-	-	-	-	114
-	-	-	-	-	113
-	-	-	-	-	112
-	-	-	-	-	111
-	-	-	-	-	110
-	-	-	-	-	109
-	-	-	-	-	108
-	-	-	-	-	107
-	-	-	-	-	106
-	-	-	-	-	105
-	-	-	-	-	104
-	-	-	-	-	103
-	-	-	-	-	102
-	-	-	-	-	101
-	-	-	-	-	100
-	-	-	-	-	99
-	-	-	-	-	98
-	-	-	-	-	97
-	-	-	-	-	96
-	-	-	-	-	95
1	-	A	4-21002-1	SCR, BSHC 5/16-18 x .75	94
1	-	A	3-21001-4	SCR, SHC, 3/8-16 x .88	93
1	-	A	21001-5	SCR, SHC, 1/4-20 x .88	92
2	-	A	21018-7	NUT, HEX, 10-32	91
-	-	-	-	-	90
1	-	A	2-21000-5	SCR, SHC, 8-32 x .25	89
-	-	-	-	-	88
-	-	-	-	-	87
1	-	A	3-21000-9	SCR, SOC SET, 10-32 x 1.00	86
1	-	A	2-21549-3	SCR, SOC SET, 1/4-20 x .25	85
3	-	A	371178	WASHER, FLAT, 3/8	84
3	-	A	3-21015-2	SCR, HEX HD, 3/8-16 x 1.25	83
2	-	A	21024-5	WASHER, LOCK, #10	82
-	-	-	-	-	81
1	-	A	21018-7	NUT, HEX 10-32	80
1	-	A	21055-6	WASHER, FLAT, #8	79
2	-	A	3-21000-7	SCR, SHC, 10-32 x .75	78
4	-	A	3-21000-6	SCR, SHC, 10-32 x .62	77
2	-	A	3-21000-4	SCR, SHC, 10-32 x .38	76
2	-	A	21001-3	SCR, SHC, 1/4-20 x .62	75
-	-	-	-	-	74

-	-	-	-	-	73
-	-	-	-	-	72
-	-	-	-	-	71
-	-	-	-	-	70
-	-	-	-	-	69
1	-	-	465184-2	LUBRICATOR ASSY	68
-	-	-	-	-	67
-	-	-	-	-	66
1	-	A	374999	TENSION ADJ PLATE	65
-	-	-	-	-	64
-	-	-	-	-	63
-	-	-	-	-	62
-	-	-	-	-	61
-	-	-	-	-	60
-	-	-	-	-	59
-	-	-	-	-	58
-	-	-	-	-	57
1	-	-	22202-1	NUT, HEX JAM, 1/4-20	56
1	-	-	21077-7	SCR, SQ HD SET, 1/4-20 x 1.50	55
-	-	-	-	-	54
-	-	-	-	-	53
-	-	-	-	-	52
-	-	-	-	-	51
-	-	-	-	-	50
-	-	-	-	-	49
-	-	-	-	-	48
-	-	-	-	-	47
-	-	-	-	-	46
-	-	-	-	-	45
1	-	-	372998	RETAINER, FEED PLATE	44
1	-	A	2-24017-7	SPRING SLIDE	43
-	-	-	-	-	42
-	-	-	-	-	41
1	-	-	460582-1	GUARD	40
1	-	C	570238	BASE CASTING	39
-	-	-	-	-	38
-	-	-	-	-	37
1	-	-	811432-1	FEED FINGER	36
-	-	-	-	-	35
2	-	A	372997	ADJ. SCREW, STOCK DRAG	34
1	-	A	23846-7	SPRING, STOCK DRAG	33
1	-	-	21015-8	STUD, STOCK DRAG	32
1	-	A	21022-4	NUT, STOCK DRAG HANDLE	31
-	-	-	-	-	30
3	-	A	21017-6	SCR, DRIVE 4-40X.25	29
1	-	A	452373-1	PLATE, IDENTIFICATION	28
1	-	-	375570	SPACER, CLEANER	27
1	-	-	810995-2	STRIPPER	26
1	-	-	376945	WIRE GUIDE	25
1	-	-	378975	AUX. ANVIL HOLDER	24
1	-	-	374348	ANVIL HOLDER	23
-	-	-	-	-	22
-	-	-	-	-	21
-	-	-	-	-	20
1	-	C	473933	APPLICATOR MOUNT ASSY	19
-	-	-	-	-	18
-	-	-	-	-	17
-	-	-	-	-	16
1	-	B	471057	RAM	15
-	-	-	-	-	14
-	-	-	-	-	13
-	-	-	-	-	12
-	-	-	-	-	11
-	-	-	-	-	10
-	-	-	-	-	9
-	-	-	-	-	8
-	-	-	-	-	7
1	-	A	373158	PLATE, FEED	6
1	-	B	376894	BLADE, SHEAR	5
-	-	-	-	-	4
1	-	B	373164	ANVIL	3
-	-	-	-	-	2
1	-	C	456423-7	CRIMPER, WIRE	1

QTY	REQD	PER	ASSY	PARTS LIST
-3	U/M	DWG	SIZE	PART NO DESCRIPTION ITEM NO

QTY	REQD	PER	ASSY	PARTS LIST
-3	U/M	DWG	SIZE	PART NO DESCRIPTION ITEM NO

THIS DRAWING IS A CONTROLLED DOCUMENT.

THIS DRAWING IS UNRELEASED. RELEASED FOR PUBLICATION BY AMP INCORPORATED. ALL RIGHTS RESERVED. COPYRIGHT 19

LOC A  
DIST 4

DIMENSIONS IN INCHES. DO NOT SCALE PRINT. TOLERANCES UNLESS OTHERWISE SPECIFIED:  
 2 PLC DEC ±  
 3 PLC DEC ±  
 4 PLC DEC ±  
 ANGLES ±  
 SURF TEXTURE: ✓  
 REMOVE BURRS, BREAK SHARP EDGES R.015 MAX

DR	5/17/93	APP	2-14-94
R	LEHR/UTA	B	WOLFE
CHK	2-14-94	REL	3/10/94
C	ERISMAN	B.	MORGAN

NAME: END FEED STANDARD APPLICATOR MACHINE REF: STD APPL  
 SCALE: 1:4 DWG NO: 670786-3 SHEET 1 OF 1 REV R1

CUSTOMER AND ASSEMBLY DRAWING