

Customer Information Sheet

DRAWING No.: M80-415XX98

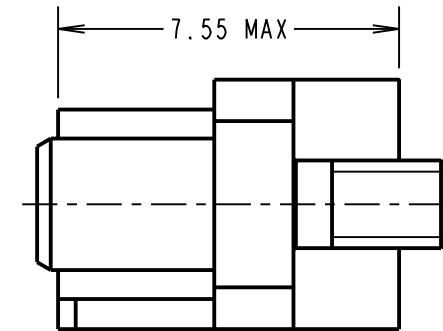
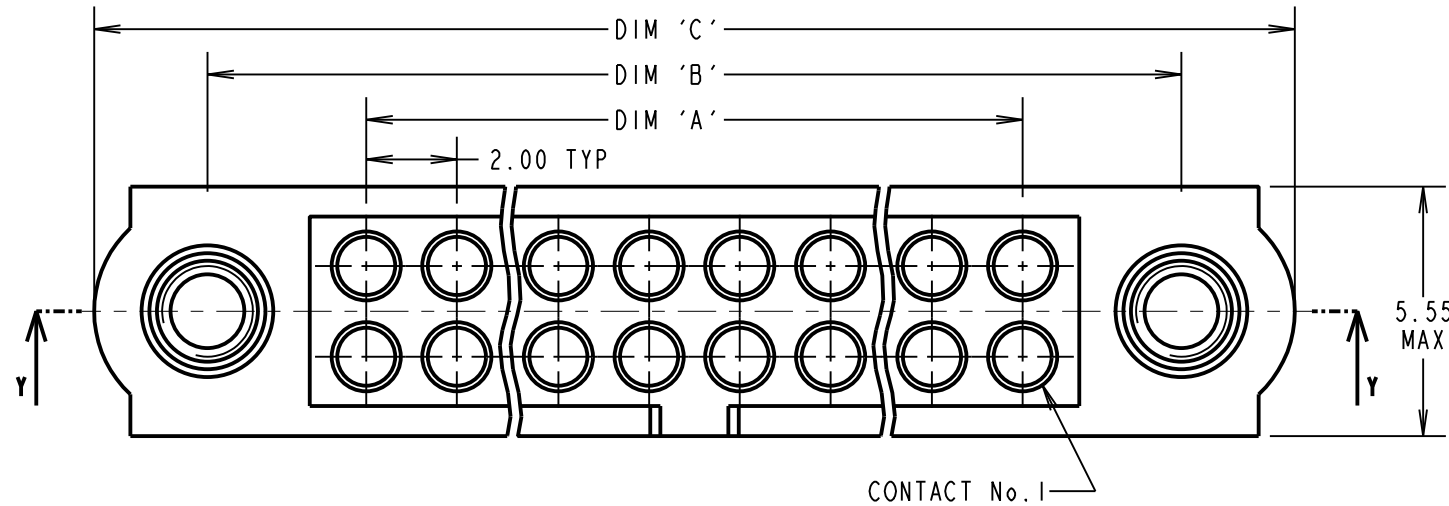
IF IN DOUBT - ASK

©

NOT TO SCALE

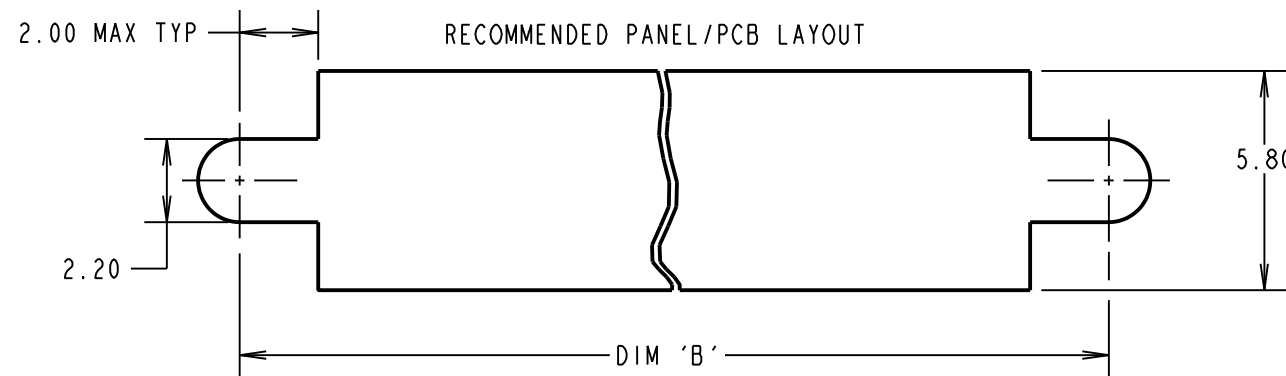
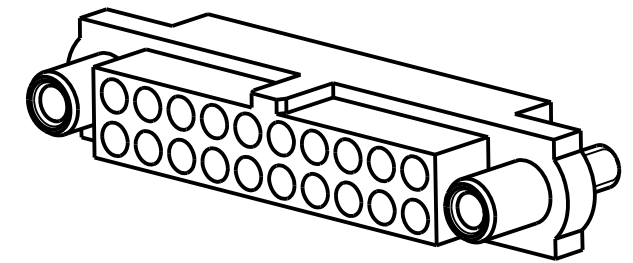
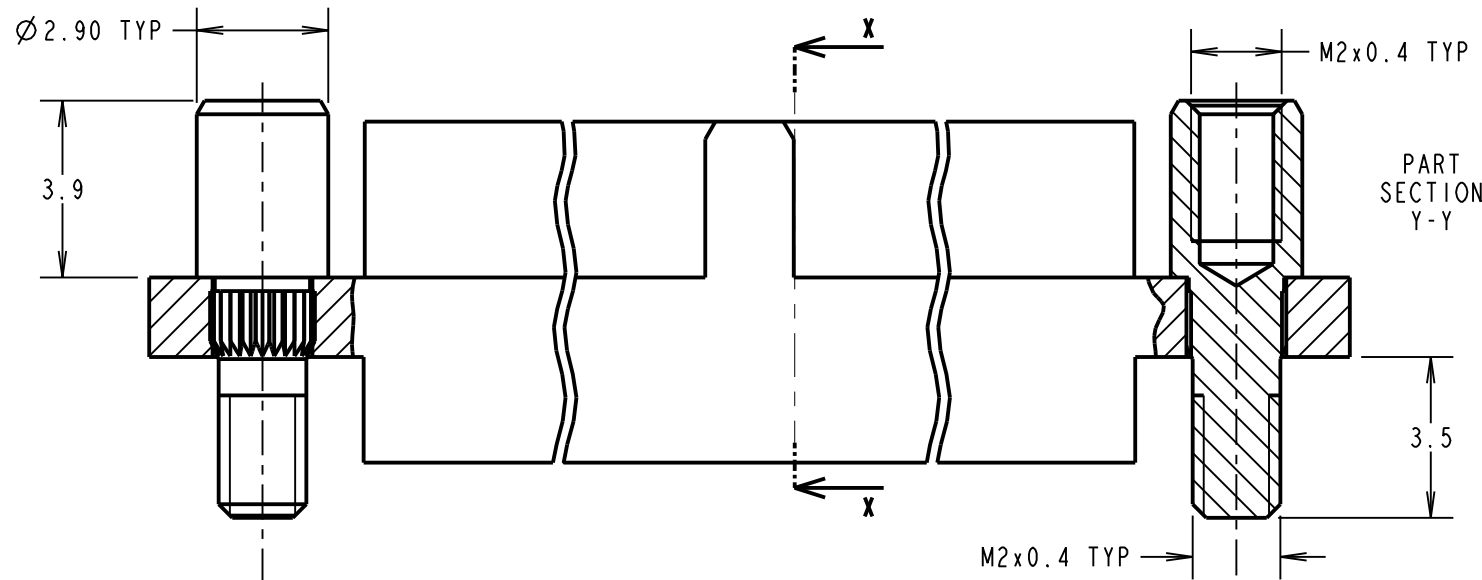
THIRD ANGLE PROJECTION

ALL DIMENSIONS IN mm



SPECIFICATIONS:

MATERIAL:
 MOULDING: GLASS FILLED PPS, UL94V-0, BLACK
 ENVIRONMENTAL:
 TEMPERATURE RANGE = -55°C TO +125°C
 PACKING:
 BAG
 FOR COMPLETE SPECIFICATION SEE COMPONENT SPECIFICATION C005XX (LATEST ISSUE)



DIMENSION	CALCULATION
DIM 'A'	TOTAL No. OF POSITIONS - 2
DIM 'B'	TOTAL No. OF POSITIONS + 5
DIM 'C'	TOTAL No. OF POSITIONS + 10

EXAMPLE: HOUSING WITH 20 POSITIONS AND FIXINGS, M80-4152098

DIM 'A' = 18.00mm, DIM 'B' = 25.00mm,
 DIM 'C' = 30.00mm

NOTES:

- HOUSING TO BE USED WITH M80-2060005 CONTACTS. CONTACTS ARE SOLD SEPERATELY.
- FOR ASSEMBLY INSTRUCTION, SEE IS-25.
- JACKSCREW NUTS SOLD SEPERATELY. USE PART NUMBER M80-2130000B OR M80-2430000B FOR A BAG OF 12 NUTS.

ORDER CODE:

M80-415XX98

TOTAL No. OF POSITIONS: _____
 04 TO 50
 (EVEN NUMBERS ONLY)

MSP	1	12.04.17	-----
NAME	ISS.	DATE	C/NOTE
APPROVED: M.PERREN			
CHECKED: S.BENNETT			
DRAWN: M.PERREN			
CUSTOMER REF.:			
ASSEMBLY DRG:			

HARWIN

www.harwin.com
 technical@harwin.com

THIS DRAWING AND ANY INFORMATION OR DESCRIPTIVE MATTER SET OUT HEREON ARE CONFIDENTIAL AND COPYRIGHT PROPERTY OF THE HARWIN GROUP AND MUST NOT BE DISCLOSED, LOANED, COPIED OR USED FOR MANUFACTURING, TENDERING OR FOR ANY OTHER PURPOSE WITHOUT THEIR WRITTEN PERMISSION.

TOLERANCES
 X. = ±1mm
 X.X = ±0.25mm
 X.XX = ±0.10mm
 X.XXX = ±0.01mm
 ANGLES = ±5°
 UNLESS STATED

MATERIAL: SEE ABOVE
 FINISH: SEE ABOVE
 S/AREA: mm²

TITLE: FEMALE T-CONTACT J-TEK CRIMP HOUSING WITH REV.FIX BOARDMOUNT JACKSCREW

DRAWING NUMBER: **M80-415XX98**
 SHT 2 OF 2