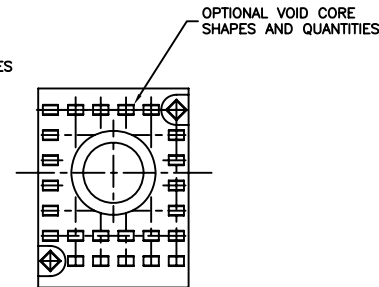
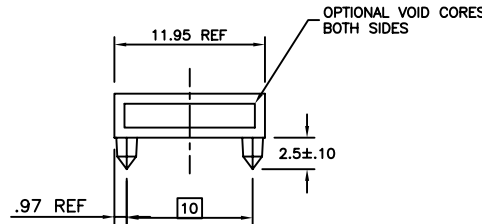
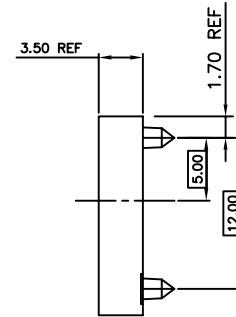
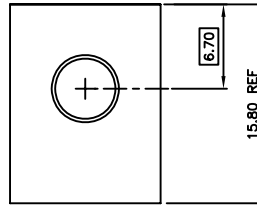
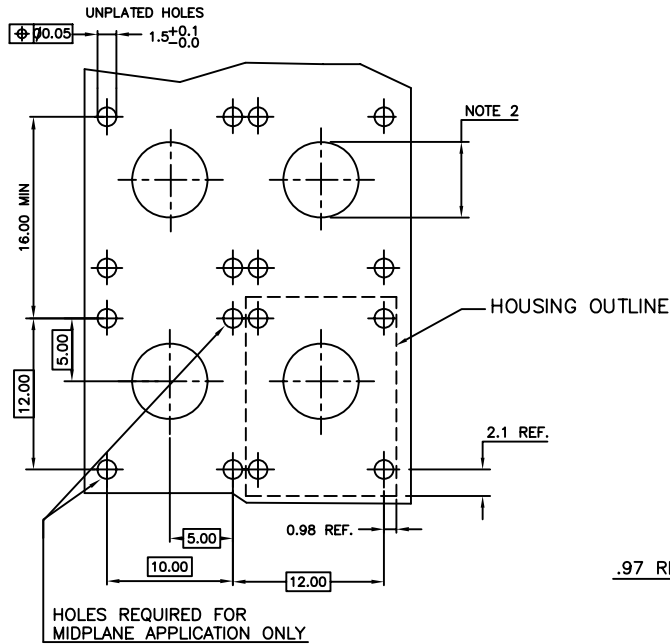


| |
|-------------|
| PRODUCT NO |
| 63735-101 |
| 63735-101LF |



RECOMMENDED P.C.B. HOLE PATTERN.

NOTES

1. MATERIAL: LCP, 30% GLASS FILLED, FLAME RETARDANT ACC. TO UL 94-V0 COLOR: NATURAL
2. -WHEN USED WITH GUIDE PIN, HOLE DIAMETER TO BE 3.25±0.10 AND UNPLATED.
-WHEN USED WITH STR. SCREW-TO-BOARD HIGH POWER INSERT, HOLE DIAMETER TO BE 3.25±0.10 AND PLATED WITH 5.00 MIN. PAD DIAMETER.
-WHEN USED WITH A PLUG/PLUG HIGH POWER COUPLER OR A RECEPTACLE/RECEPTACLE COAX COUPLER, HOLE DIAMETER TO BE 6.00+0.10/-0.00 AND UNPLATED.
3. MAX. FLASH 0.1MM
4. LEAST MATERIAL CONDITION ACC. TO ANSI Y14.5

5. FOR LEAD FREE NUMBERS, ADD AN 'LF' SUFFIX. PART NUMBERS THAT DO NOT END IN 'LF' ARE LEAD FREE. EXAMPLE: 63735-101LF
 6. THE PRODUCTS WHERE THE PART NUMBER ENDS IN LF AND THE NONE LF PART NUMBERS MEET THE EUROPEAN UNION DIRECTIVES AND OTHER COUNTRY REGULATIONS AS DESCRIBED IN GS-22-008.
 7. ALL PRODUCTS WILL WITHSTAND EXPOSURE TO 260°C FOR 60 SECONDS IN A CONVECTION, INFRA-RED OR VAPOUR PHASE REFLOW OVEN.
- | | | | |
|---|----------|-----|---------|
| A | V90642 | MDF | 6/3/99 |
| B | V91703 | MDF | 7/19/99 |
| C | V94015 | MDF | 9/22/99 |
| D | V00020 | JWS | 1/25/00 |
| E | V05-0458 | TAB | 5/16/05 |
| F | V06-0077 | JRV | 3/14/06 |

| | | | | | | | | | | | |
|-------------|----------|----------------|------------|---------------------------------------|--|------------|--|--------------|--|--------------------------|--|
| mat'l. code | | | | surface | | tolerance | | projection | | product family | |
| NOTE 1 | | | | ASME Y14.5 | | ASME Y14.5 | | MM | | METRAL (tm) | |
| ltr | ecn no | dr | date | tolerances unless otherwise specified | | angles | | MM | | title | |
| D | V00020 | JWS | 2000-01-25 | | | X*3 | | | | 4 ROW HYBRID HEADER HSG. | |
| E | V05-0458 | TAB | 2005-05-16 | | | XX*13 | | | | COAX, W/O WALLS, 12mm | |
| F | V06-0077 | JRV | 2006-03-14 | 0° ±2' | | XXX*051 | | scale 2.25:1 | | dwg no | |
| G | V06-0606 | JRV | 2006-06-21 | dr | | M. FETROW | | 1999-06-03 | | sheet 1 of 1 | |
| | | | | engr | | D. McCLUNE | | 1999-06-03 | | size | |
| | | | | chr | | D. McCLUNE | | 1999-06-03 | | 63735 | |
| | | | | appd | | D. McCLUNE | | 1999-06-03 | | A4 | |
| sheet index | | revision sheet | | G | | | | | | type | |
| | | 1 | | | | | | | | CUSTOMER Drawing | |