

4

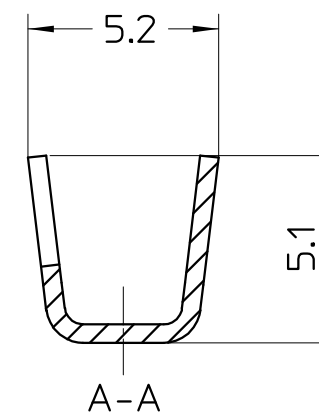
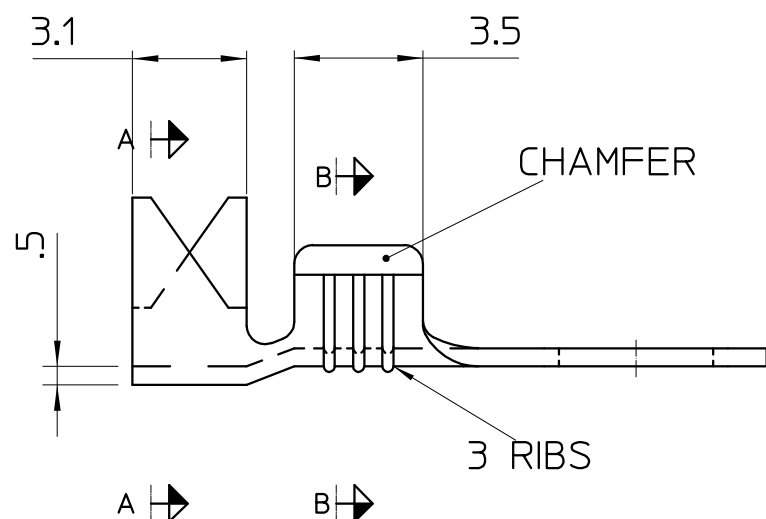
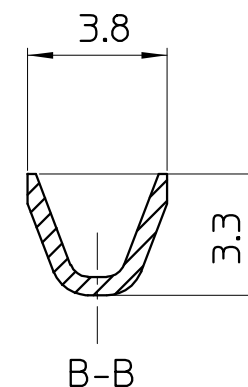
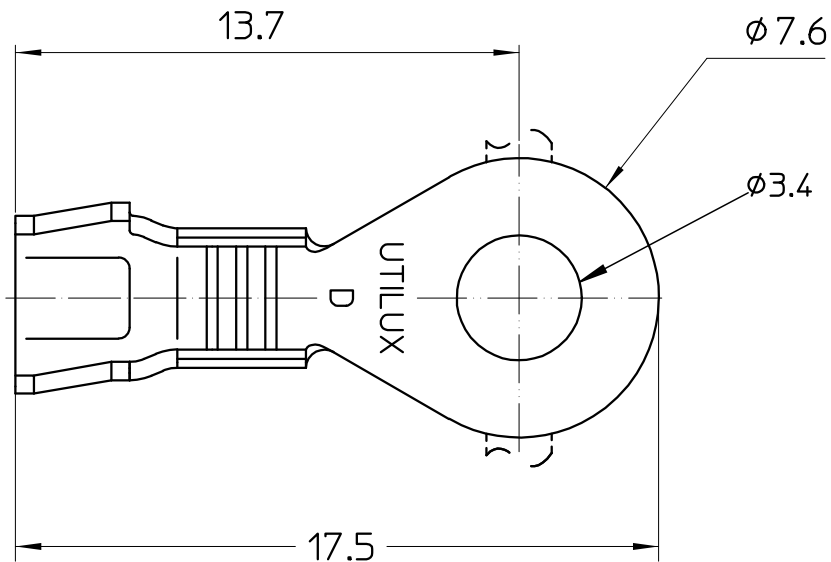
3

2

1

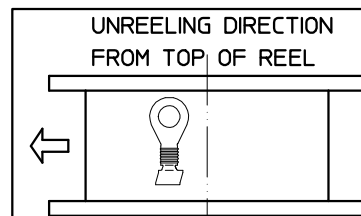
THIS DRAWING IS UNPUBLISHED. RELEASED FOR PUBLICATION  
 © COPYRIGHT BY TYCO ELECTRONICS CORPORATION. ALL RIGHTS RESERVED.

LOC	DIST	REVISIONS			
P	LTR	DESCRIPTION	DATE	DWN	APVD
U	-	A	REVISED PER ECR-20-005216	11MAY2020	GK CS



OBSOLETE	LOOSE PIECE	BRASS	TERMINAL, RING TONGUE, LOOSE PIECE	1-1627169-3
OBSOLETE	REEL FORM	BRASS PRE-TIN	TERMINAL, RING TONGUE H3930ET	1-1627169-2
	REEL FORM	BRASS	TERMINAL, RING TONGUE H3930	1-1627169-0
	REMARKS	MATERIAL	DESCRIPTION	PART No.

NOTES:  
 1. WIRE RANGE  
 CONDUCTOR: 0.5mm<sup>2</sup> - 1.5mm<sup>2</sup>  
 INSULATION DIA: 2.2mm - 3.2mm



THIS DRAWING IS A CONTROLLED DOCUMENT.		DWN: T. THAI 1.7.05
ALL DIMENSIONS IN mm:		CHK: W. RIEDE 1.7.05
TOLERANCES UNLESS OTHERWISE SPECIFIED:		APVD: W. RIEDE 2.7.05
DIMENSION (mm)	TOLERANCE (+mm)	PRODUCT SPEC: -
LESS THAN 10	0.4	APPLICATION SPEC: -
OVER 10 TO 30	0.5	WEIGHT: -
OVER 30 TO 80	0.7	
OVER 80 TO 250	1.0	
ANGLES	+2°	
MATERIAL	SEE TABLE	
FINISH	SEE TABLE	

**STE** TE Connectivity

NAME: TERMINAL, RING TONGUE

SIZE	CAGE CODE	DRAWING NO	RESTRICTED TO
A3		© 1627169	-

CUSTOMER DRAWING SCALE 5:1 SHEET 1 OF 1 REV A

THIS INFORMATION IS CONFIDENTIAL AND PROPRIETARY TO TYCO ELECTRONICS CORPORATION AND ITS WORLDWIDE SUBSIDIARIES AND AFFILIATES. IT MAY NOT BE DISCLOSED TO ANYONE OTHER THAN TYCO ELECTRONICS PERSONNEL WITHOUT THE WRITTEN AUTHORIZATION OF TYCO ELECTRONICS CORPORATION, HARRISBURG, PENNSYLVANIA, USA.