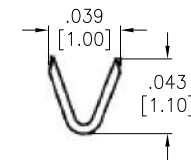
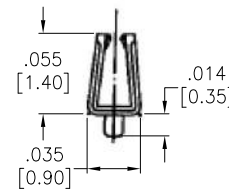
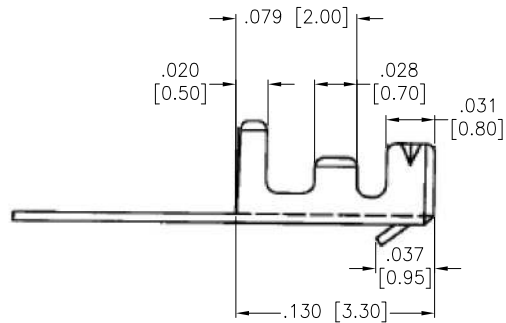
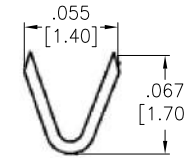
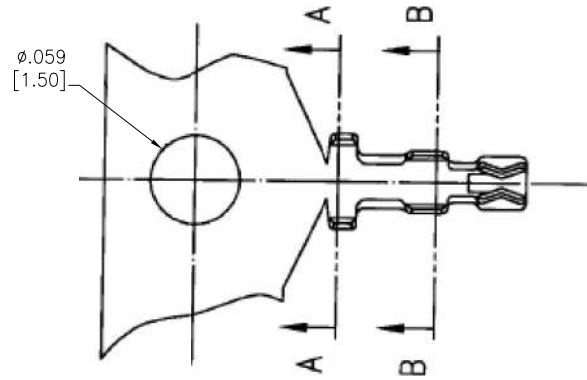


APPROVED: \_\_\_\_\_  
 DATE: \_\_\_\_\_ TITLE: \_\_\_\_\_

Rev	AWO #	Description	Date	Appr
-		RELEASED	03/24/05	
A		REDRAWN	9/16/21	LH/RC



**SPECIFICATIONS:**

Material: Phospher Bronze 0.15mm thick

Plating: Tin Plated 60u"

Mechanical:

Wire Range: 28-32 AWG.

Insulation Range: 1.00mm Max.

Packaging: Chain Reel, 10K pcs / reel

Environmental:

Lead free, RoHS Compliant



UNLESS OTHERWISE SPECIFIED ALL DIMENSIONS ARE INCHES [MM]. TOLERANCES: EXCEPT AS NOTED

INCHES		HOLES	
.X	± .10	Ø.X	± .10
.XX	± .020	Ø.XX	± .015
.XXX	± .015	Ø.XXX	± .010



909 Rahway Avenue,  
 Union, NJ 07083  
 Phone: 908-687-5000  
 Fax: 908-687-5710

DRAWN	SS	03/24/05
CHECKED		
APPROVED		

TITLE	CRIMP TERMINAL 1.25mm FOR 125CH-A-XX HOUSING	
SIZE	PART NO.	REV.
X	125CTA-R	-

THIS DRAWING CONTAINS INFORMATION THAT IS PROPRIETARY AND SHOULD NOT BE USED WITHOUT PRIOR WRITTEN PERMISSION FROM ADAM TECH

REF:	S00016T	SCALE:	NTS	SHEET	1 OF 1
------	---------	--------	-----	-------	--------