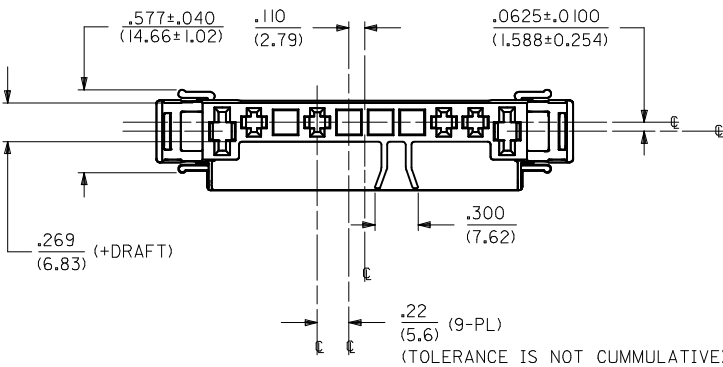
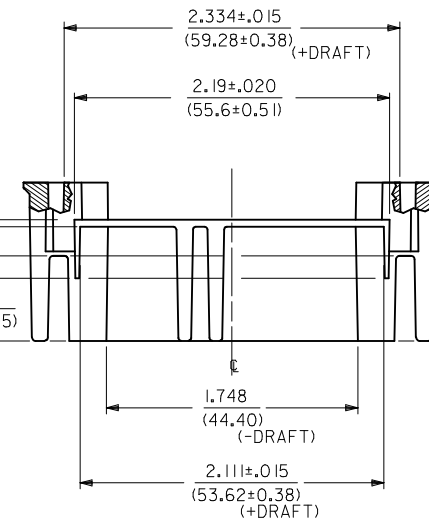
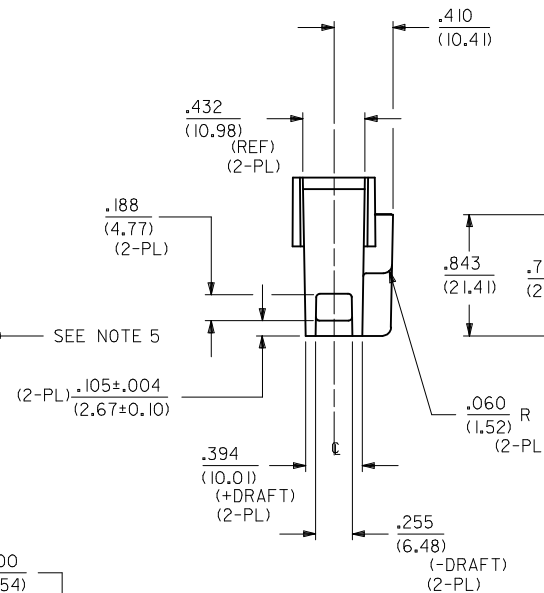
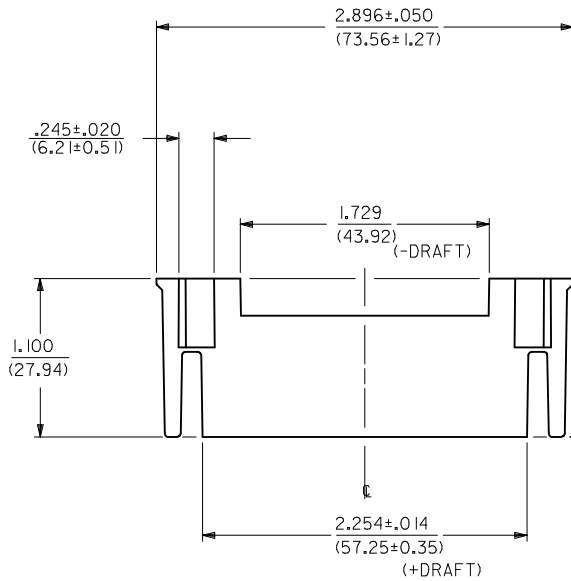
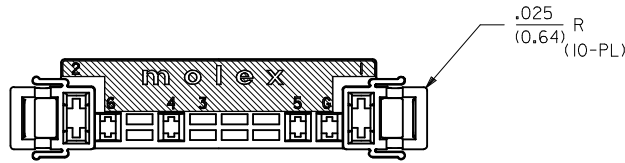


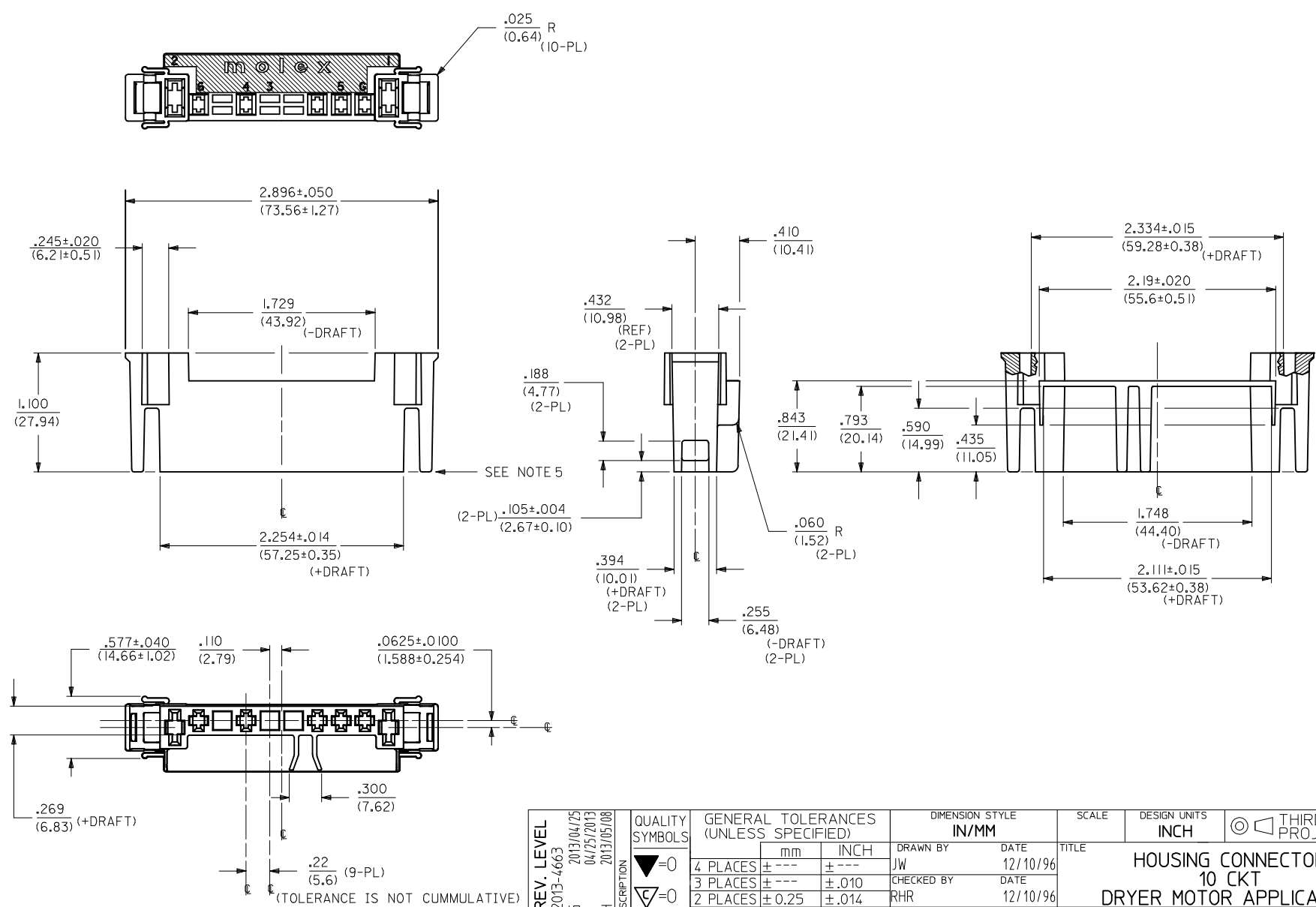
# NOTES

1. MATERIAL: NYLON 6/6, 94V-2. COLOR: NATURAL (WHITE/TRANSLUCENT)
2. FINISH: NONE.
3. PRODUCT SPECS: PSX-42865-0001, PSX-42865-0002 & PS-43374-0001 APPLY.
4. PACKAGING SPECS: HOUSINGS ARE PACKED ACCORDING TO PK-42865-001.
5. THE OUTSIDE EDGES ASSOCIATED WITH THIS SURFACE TO HAVE .02/(0.51) RADII.
6. 42865-0001 CONNECTOR HOUSING IS FOR USE WITH TERMINALS:
  - .125/(3.18) SPADE: 1508\*\* & 43374-\*\*\*1 (4-PL MAX)
  - .250/(6.35) SPADE: 41422-3\*\*\*5\*\* (2-PL MAX)
7. 42865-0002 CONNECTOR HOUSING IS FOR USE WITH TERMINALS:
  - .125/(3.18) SPADE: 1508\*\* & 43374-\*\*\*1 (5-PL MAX)
  - .250/(6.35) SPADE: 41422-3\*\*\*5\*\* (2-PL MAX)
8. PART CONFORMS TO CLASS B REQUIREMENTS OF COSMETIC SPECS PS-45499-002.



42865-0001	006-02-3104
ENG. NO.	PART NO.

REMOVE SMES-128-A EC NO: UCP2013-4663 DRW: AELHAG 2013/04/25 CHKD: JBEL 04/25/2013 APPR: FSMITH 2013/05/08	QUALITY SYMBOLS	GENERAL TOLERANCES (UNLESS SPECIFIED)	DIMENSION STYLE	SCALE	DESIGN UNITS	THIRD ANGLE PROJECTION
	▽=0	mm INCH	IN/MM	1:1	INCH	
	▽=0	4 PLACES ± --- ± ---	DRAWN BY DATE	TITLE		
		3 PLACES ± --- ± .010	CHECKED BY DATE	HOUSING, CONNECTOR		
		2 PLACES ± 0.25 ± .014	KBP 10/17/1991	10 - CIRCUITS		
	1 PLACE ± 0.35 ± ---	KBP 10/17/1991	DRYER MOTOR APPLICATION			
	ANGULAR ± 1/2°	APPROVED BY DATE	MOLEX MOLEX INCORPORATED			
		RAS 10/17/1991	SEE CHART			
		MATERIAL NO.	DOCUMENT NO.		SHEET NO.	
			SD-42865-0001		1 OF 2	
			THIS DRAWING CONTAINS INFORMATION THAT IS PROPRIETARY TO MOLEX INCORPORATED AND SHOULD NOT BE USED WITHOUT WRITTEN PERMISSION			



42865-0002	006-02-3105
ENG. NO.	PART NO.

UPDATE REV. LEVEL  
 EC NO: UCP2013-4663  
 DRW: NAEHAG 2013/04/25  
 CHKD: JBEL 04/25/2013  
 APPR: FSLTH 2013/05/08

QUALITY SYMBOLS  
 ▽=0  
 ▽=0

GENERAL TOLERANCES (UNLESS SPECIFIED)

	mm	INCH
4 PLACES ±	---	---
3 PLACES ±	---	±.010
2 PLACES ±	0.25	±.014
1 PLACE ±	0.35	---

ANGULAR ±1/2°

DRAFT WHERE APPLICABLE MUST REMAIN WITHIN DIMENSIONS

DIMENSION STYLE  
 IN/MM

DRAWN BY: JW DATE: 12/10/96  
 CHECKED BY: RHR DATE: 12/10/96  
 APPROVED BY: RE DATE: 12/10/96

MATERIAL NO. SEE CHART  
 SIZE C

SCALE: INCH  
 DESIGN UNITS: INCH  
 THIRD ANGLE PROJECTION

TITLE: HOUSING CONNECTOR 10 CKT DRYER MOTOR APPLICATION

MOLEX INCORPORATED

DOCUMENT NO. SD-42865-0001 SHEET NO. 2 OF 2

THIS DRAWING CONTAINS INFORMATION THAT IS PROPRIETARY TO MOLEX INCORPORATED AND SHOULD NOT BE USED WITHOUT WRITTEN PERMISSION