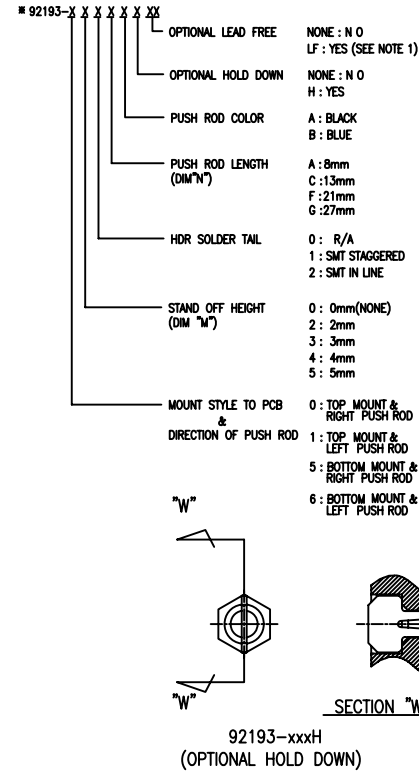


PRODUCT NO.
92193

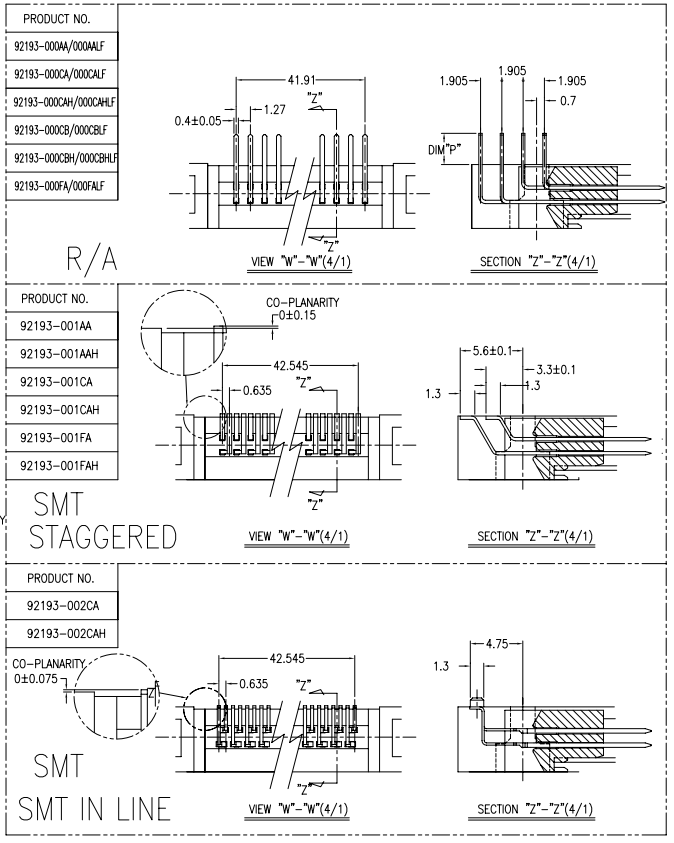
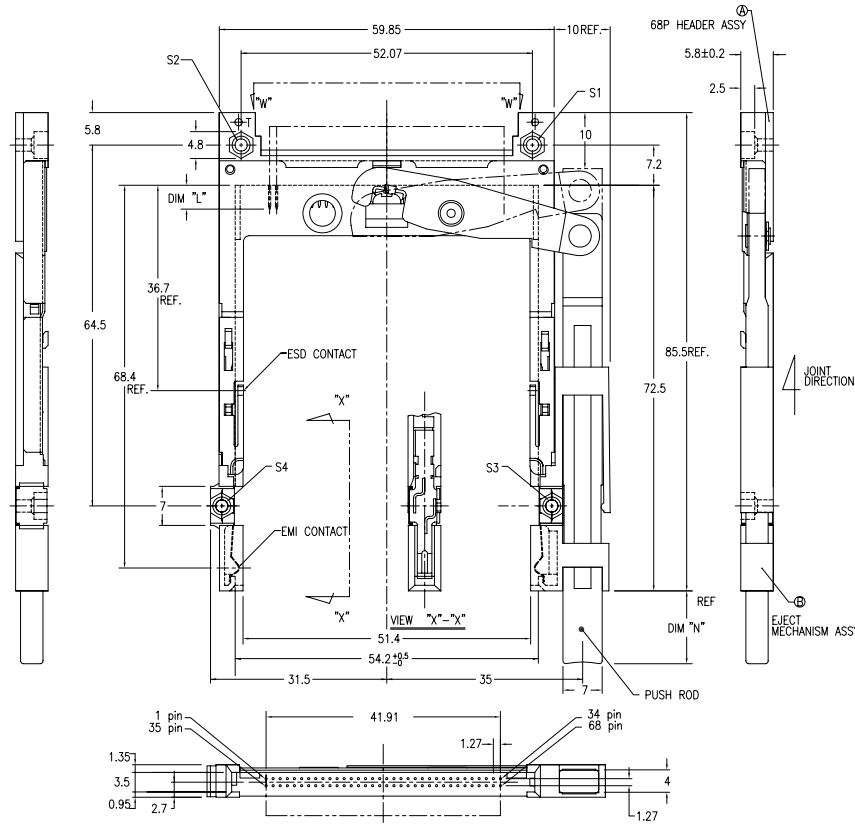
PRODUCT NO. 92193-XXXXX	STAND OFF(mm)	DIM "N" (mm)	PUSH ROD COLOR	HDR SOLDER TAIL	HOLD DOWN	MECH ASSY 92192-XXXXX	HDR ASSY 92140-XXXXX	DIM "P" (mm)	HDR COLOR	SHEET NO.	MOUNT STYLE TO PCB & DIRECTION OF PUSH ROD				
000AALF	0	8	BLACK	R/A	NONE	00AA	000LF	2.8	BLACK	NO.2					
000CALF	0	13	BLACK	R/A	NONE	00CA	000LF	2.8							
000CAHLF	0	13	BLACK	R/A	YES	00CAH	000HLF	2.8							
000CBLF	0	13	BLUE	R/A	NONE	00CB	000LF	2.8							
000CBHLF	0	13	BLUE	R/A	YES	00CBH	000HLF	2.8							
000FALF	0	21	BLACK	R/A	YES	00FA	000LF	2.8							
001AA	0	8	BLACK	SMT STAGGERED	NONE	00AA	001	-							
001AAH	0	8	BLACK	SMT STAGGERED	YES	00AAH	001H	-							
001CA	0	13	BLACK	SMT STAGGERED	NONE	00CA	001	-							
001CAH	0	13	BLACK	SMT STAGGERED	YES	00CAH	001H	-							
001FA	0	21	BLACK	SMT STAGGERED	NONE	00FA	001	-							
001FAH	0	21	BLACK	SMT STAGGERED	YES	00FAH	001H	-							
002CA	0	13	BLACK	SMT IN LINE	NONE	00CA	002	-							
002CAH	0	13	BLACK	SMT IN LINE	YES	00CAH	002H	-							
020CALF	2	13	BLACK	R/A	NONE	02CA	040LF	2.5	BLACK	NO.3					
040CALF	4	13	BLACK	R/A	NONE	04CA	010LF	2.8							
050CALF	5	13	BLACK	R/A	NONE	05CA	020LF	2.8							
050CAHLF	5	13	BLACK	R/A	YES	05CAH	020HLF	2.8							
100CALF	0	13	BLACK	R/A	NONE	10CA	000LF	2.8							
100CAHLF	0	13	BLACK	R/A	YES	10CAH	000HLF	2.8							
101CA	0	13	BLACK	SMT STAGGERED	NONE	10CA	001	-	BLACK			NO.4			
101CAH	0	13	BLACK	SMT STAGGERED	YES	10CAH	001H	-							
101FA	0	21	BLACK	SMT STAGGERED	NONE	10FA	001	-							
101FAH	0	21	BLACK	SMT STAGGERED	YES	10FAH	001H	-							
102CA	0	13	BLACK	SMT IN LINE	NONE	10CA	002	-							
102CAH	0	13	BLACK	SMT IN LINE	YES	10CAH	002H	-							
120CALF	2	13	BLACK	R/A	NONE	12CA	040LF	2.5	BLACK	NO.5					
120GALF	2	13	BLACK	R/A	NONE	12GALF	040LF	2.5							
120CAHLF	2	13	BLACK	R/A	YES	12CAH	040HLF	2.5							
120FALF	2	21	BLACK	R/A	NONE	12FA	040LF	2.5							
130CALF	3	13	BLACK	R/A	NONE	13CA	050LF	2.8							
130CAHLF	3	13	BLACK	R/A	YES	13CAH	050HLF	2.8							
140CALF	4	13	BLACK	R/A	NONE	14CA	010LF	2.8							
150CALF	5	13	BLACK	R/A	NONE	15CA	020LF	2.8							
500CALF	0	13	BLACK	R/A	NONE	10CA	500LF	2.8							
500CAHLF	0	13	BLACK	R/A	YES	10CAH	500HLF	2.8							
500FALF	0	21	BLACK	R/A	NONE	10FA	500LF	2.8							
501CA	0	13	BLACK	SMT STAGGERED	NONE	10CA	501	-	NATURAL			NO.6			
501CAH	0	13	BLACK	SMT STAGGERED	YES	10CAH	501H	-							
502CA	0	13	BLACK	SMT IN LINE	NONE	10CA	502	-							
502CAH	0	13	BLACK	SMT IN LINE	YES	10CAH	502H	-							
502FA	0	21	BLACK	SMT IN LINE	NONE	10FA	502	-							
520CALF	2	13	BLACK	R/A	NONE	12CA	540LF	2.5	NATURAL	NO.7					
540CALF	4	13	BLACK	R/A	NONE	14CA	510LF	2.8							
550CALF	5	13	BLACK	R/A	NONE	15CA	520LF	2.8							
600CALF	0	13	BLACK	R/A	NONE	00CA	500LF	2.8							
600CAHLF	0	13	BLACK	R/A	YES	00CAH	500HLF	2.8							
601CA	0	13	BLACK	SMT STAGGERED	NONE	00CA	501	-	NATURAL					NO.8	
601CAH	0	13	BLACK	SMT STAGGERED	YES	00CAH	501H	-							
602CA	0	13	BLACK	SMT IN LINE	NONE	00CA	502	-							
602CAH	0	13	BLACK	SMT IN LINE	YES	00CAH	502H	-							
620CALF	2	13	BLACK	R/A	NONE	02CA	540LF	2.5	NATURAL			NO.9			
640CALF	4	13	BLACK	R/A	NONE	04CA	510LF	2.8							
650CALF	5	13	BLACK	R/A	NONE	05CA	520LF	2.8							



NOTE
1. THIS PRODUCT MEETS EUROPEAN UNION REGULATIONS AS DESCRIBED IN GS-22-008. DIRECTIVES AND OTHER COUNTRY

mat'l. code	surface ISO1302	tolerance ISO1101 ISO406	projection	product family PCMCIA
ltr	ecn no	dr	date	title
x				68P EJECTOR HEADER ASSY FOR TYPE I/II/III (FOR 5.0V)
	angles	internal	0.X±0.3	MM
		0°±2'	0.XX±0.13	scale 1:1
	dr	M.Hasegawa	4/25/05	FCI
	engr	M.Hasegawa	4/25/05	dwg no
	chr	M.Hasegawa	4/25/05	92193
	appd	M.Hasegawa	4/25/05	sheet. 2 of 10
sheet index	revision sheet			size A4
				type Product Customer Drawing

PRODUCT NO.
92193-00*****



- NOTE**
- EJECT FORCE 3.5kg MAX.
 - ASSY PROCESS
 - TO MOUNT PART ④ ON PWB WITH SCREW (S1,S2) AND SOLDER.
 - TO JOINT PART ⑤ INTO PART ④, THEN FIX PART ⑥ WITH 2 SCREWS (S3,S4).
 - EJECT TRAVEL 8.0mm
 - MATERIAL
 - PART ④ (HEADER ASSY)
 - HOUSING : HIGH TEMPERATURE THERMOPLASTIC UL94V-0
 - PIN : PHOSPHOR BRONZE
 - PART ⑤ (EJECT MECHANISM ASSY)
 - GUIDE : HIGH TEMPERATURE THERMOPLASTIC UL94V-0 BLACK
 - PUSH ROD : FLAME RETARDANT UL94V-0
 - PLATE : STAINLESS
 - EMI CONTACT : PHOSPHOR BRONZE
 - OPTIONAL HOLD-DOWN : BRASS

- ⑤ FINISH**
- PIN
 - UNDER PLATING : 0.5µm MIN. Ni
 - CONTACT AREA : 0.076 µm MIN. GOLD
 - SOLDER TAIL : 2.5µm MIN. Sn-Pb OR 2.5µm MIN. PURE Sn (FOR -*****F)
 - EMI CONTACT
 - UNDER PLATING : 2.0µm MIN. Ni
 - CONTACT AREA : 0.076 µm MIN. GOLD
 - OPTIONAL HOLD-DOWN : 2.5µm MIN. PURE Sn.
- 6. PIN NO.**
- | PIN No. | DIM "L" | | |
|---------|----------|---------|---------|
| | 4.25±0.1 | 3.5±0.1 | 5.0±0.1 |
| OTHERS | 36.67 | 36.21 | 36.21 |
- SEE TA-946 FOR PCB LAYOUT.
 - SEE 92140 FOR DETAILED HDR DIMENSION.
 - SEE SHEET1,2 REGARDING COMPONENTS.
 - GENERAL TOLERANCE : ±0.3
 - PRODUCT SPEC:110-263

PRODUCT NO.

92193-001AA
92193-001AAH
92193-001CA
92193-001CAH
92193-001FA
92193-001FAH

PRODUCT NO.

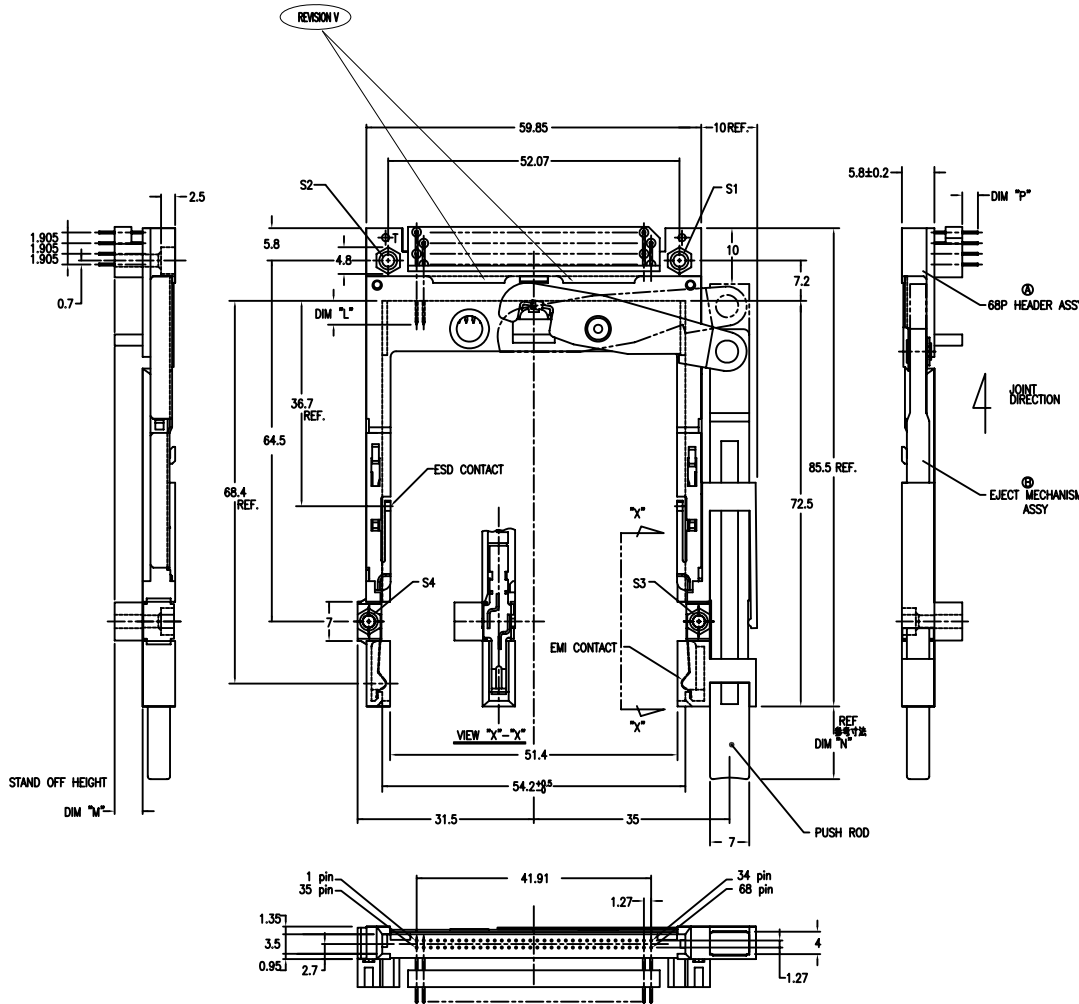
92193-002CA
92193-002CAH

CO-PLANARITY
0±0.075

mat'l. code	surface	tolerance	projection	product family
	ISO1302	ISO1101 ISO406		PCMCIA
ltr	ecn no	dr	date	title
x				68P EJECTOR HEADER ASSY FOR TYPE I/II/III (FOR 5.0V)
				dwg no
				92193
				sheet. 3 of 10
				size
				A4
				type
				Product Customer Drawing
sheet	revision			
index	sheet			



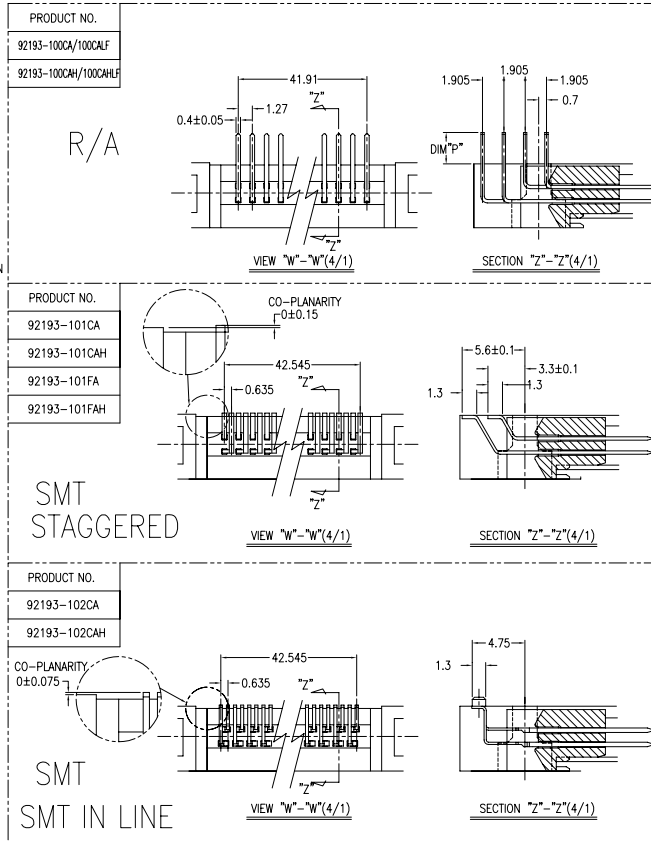
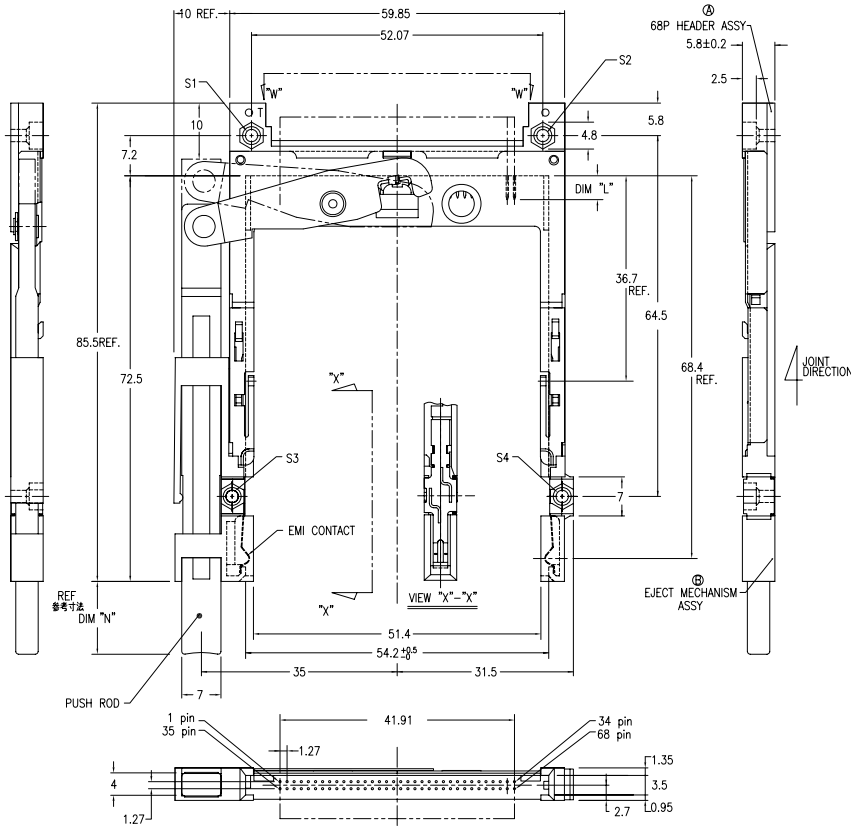
PRODUCT NO.
92193-020CA/020CAL
92193-040CA/040CAL
92193-050CA/050CAL
92193-050CAH/050CAHL



- NOTE
- EJECT FORCE 3.5kg MAX.
 - ASSY PROCESS
2.1 TO MOUNT PART ④ ON PWB WITH SCREW (S1,S2) AND SOLDER.
2.2 TO JOINT PART ④ INTO PART ⑤, THEN FIX PART ④ WITH 2 SCREWS (S3,S4).
 - EJECT TRAVEL 8.0mm
 - MATERIAL
4.1 PART ④ (HEADER ASSY)
HOUSING : HIGH TEMPERATURE THERMOPLASTIC UL94V-0
PIN : PHOSPHOR BRONZE
4.2 PART ⑤ (EJECT MECHANISM ASSY)
GUIDE : HIGH TEMPERATURE THERMOPLASTIC UL94V-0 BLACK
PUSH ROD : FLAME RETARDANT UL94V-0
PLATE : STAINLESS
EMI CONTACT : PHOSPHOR BRONZE
STANDOFF : ZINC ALLOYS DIE CASTING
 - FINISH
5.1 PIN
UNDER PLATING : 0.5µm MIN. Ni
CONTACT AREA : 0.076 µm MIN. GOLD
SOLDER TAIL : 2.5µm MIN. Sn-Pb
OR 2.5µm MIN. PURE Sn.(FOR -*****LF)
5.2 EMI CONTACT
UNDER PLATING : 2.0µm MIN. Ni
CONTACT AREA : 0.076 µm MIN. GOLD
5.3 STAND OFF : 3 ~5µm Ni, OVER 5 ~10µm Cu.
 - PIN NO.
- | PIN No. | DIM 'L' | | |
|---------|----------|---------|---------|
| | 4.25±0.1 | 3.5±0.1 | 5.0±0.1 |
| OTHERS | 36.67 | 34.78 | |
- SEE TA-946 FOR PCB LAYOUT.
 - SEE 92140 FOR DETAILED HDR DIMENSION.
 - SEE SHEET 1,2 REGARDING COMPONENTS.
 - GENERAL TOLERANCE : ±0.3.
 - PRODUCT SPEC:110-263

mat'l. code	surface ISO1302	tolerance ISO1101 ISO406	projection MM	product family PCMCIA
ltr	ecn no	dr	date	title
x				68P EJECTOR HEADER ASSY FOR TYPE I/II/III (FOR 5.0V)
				dwg no 92193 sheet. 4 of 10 size A4
				type Product Customer Drawing
sheet index	revision sheet			

PRODUCT NO.	92193-101FA
92193-100A/100CALF	92193-101FAH
92193-100AH/100CHLF	92193-102CA
92193-101CA	92193-102CAH
92193-101CAH	



NOTE

- EJECT FORCE 3.5kg MAX.
- ASSY PROCESS
 - TO MOUNT PART ① ON PWB WITH SCREW (S1,S2) AND SOLDER.
 - TO JOINT PART ② INTO PART ①, THEN FIX PART ③ WITH 2 SCREWS (S3,S4).
- EJECT TRAVEL 8.0mm
- MATERIAL
 - PART ① (HEADER ASSY)
 - HOUSING : HIGH TEMPERATURE THERMOPLASTIC UL94V-0
 - PIN : PHOSPHOR BRONZE
 - PART ② (EJECT MECHANISM ASSY)
 - GUIDE : HIGH TEMPERATURE THERMOPLASTIC UL94V-0 BLACK
 - PUSH ROD : FLAME RETARDANT UL94V-0
 - PLATE : STAINLESS
 - EMI CONTACT : PHOSPHOR BRONZE
- OPTIONAL HOLD-DOWN : BRASS

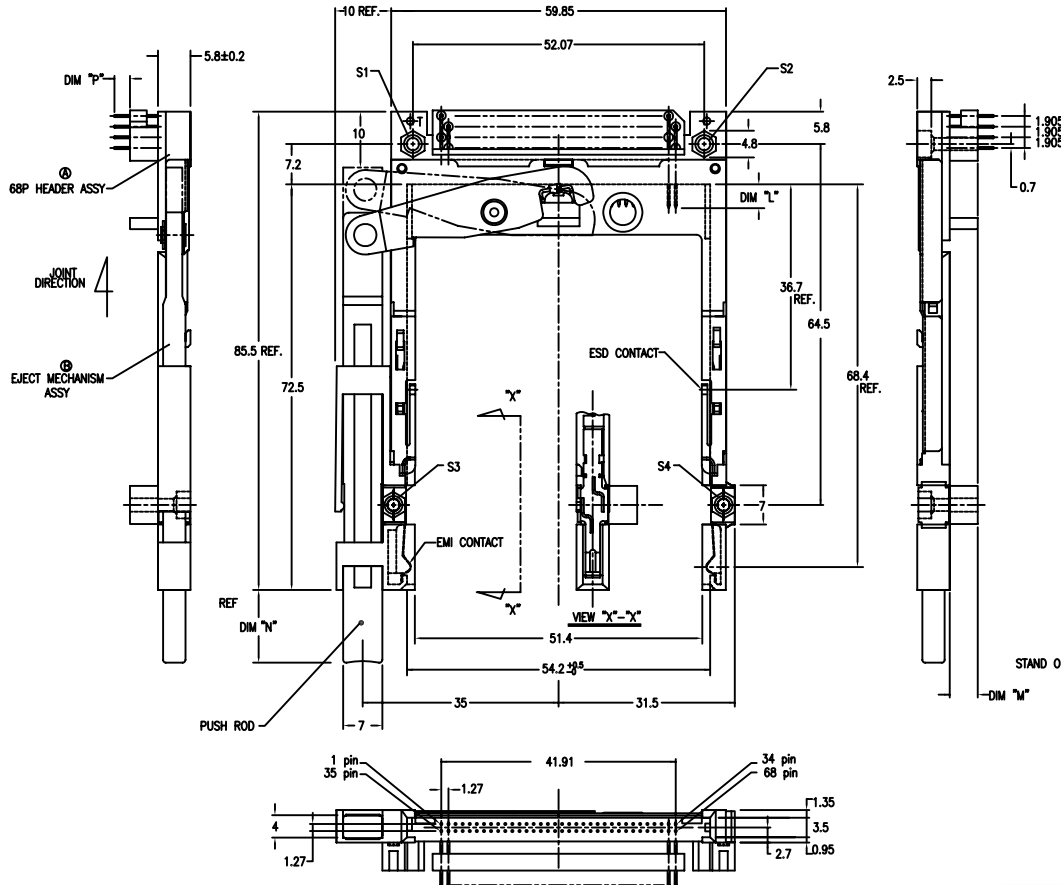
③ FINISH

- PIN
 - UNDER PLATING : 0.5µm MIN. Ni
 - CONTACT AREA : 0.076 µm MIN. GOLD
 - SOLDER TAIL : 2.5µm MIN. Sn-Pb OR 2.5µm MIN. PURE Sn.(FOR -*****LF)
- EMI CONTACT
 - UNDER PLATING : 2.0µm MIN. Ni
 - CONTACT AREA : 0.076 µm MIN. GOLD
- OPTIONAL HOLD-DOWN : 2.5µm MIN. PURE Sn
- PIN NO.

	4.25±0.1	3.5±0.1	5.0±0.1
PIN No.	OTHERS	36.67	36.67±0.08
- SEE TA-946 FOR PCB LAYOUT.
- SEE 92140 FOR DETAILED HDR DIMENSION.
- SEE SHEET 1,2 REGARDING COMPONENTS.
- GENERAL TOLERANCE : ±0.3
- PRODUCT SPEC:110-263

mat'l. code	surface	tolerance	projection	product family
	ISO1302	ISO1101 ISO406		PCMCIA
lfr	ecn no	dr	date	title
x				68P EJECTOR HEADER ASSY FOR TYPE I/II/III (FOR 5.0V)
				dwg no
				92193
				sheet. 5 of 10
				size
				A4
				type
				Product Customer Drawing
sheet	revision			
index	sheet			

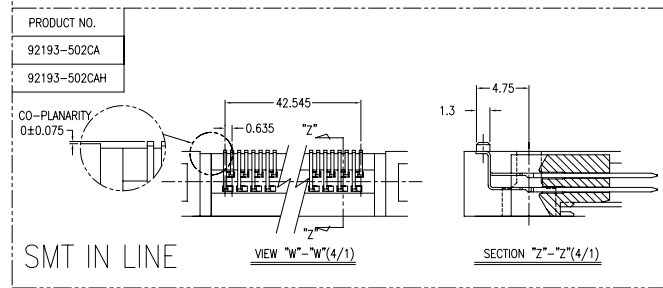
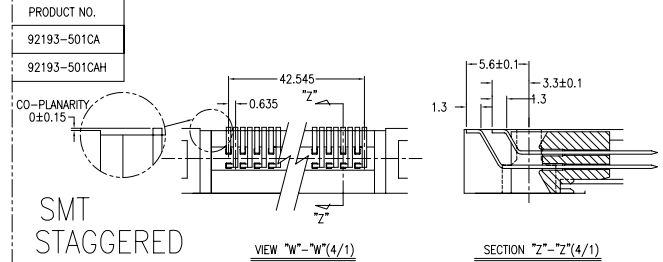
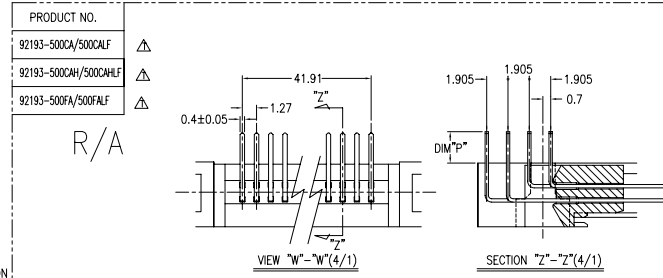
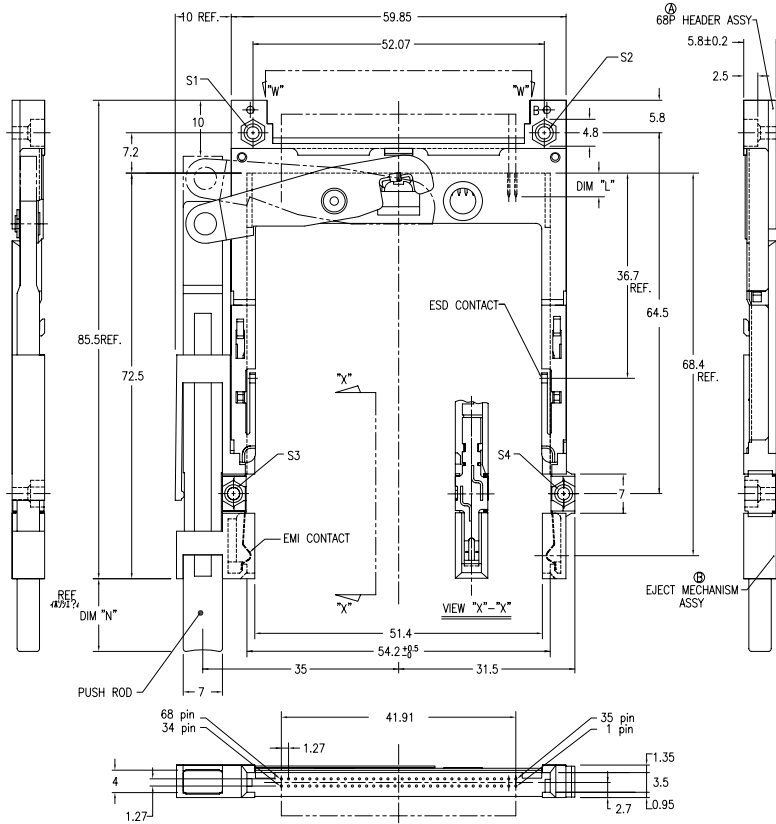
PRODUCT NO.
92193-120CA/120CALF
92193-120GA/120GALF
92193-120FA/120FALF
92193-130CA/130CALF
92193-130GA/130GALF
92193-130FA/130FALF
92193-140CA/140CALF
92193-150CA/150CALF



- NOTE
- EJECT FORCE 3.5kg MAX.
 - ASSY PROCESS
 - TO MOUNT PART ④ ON PWB WITH SCREW (S1,S2) AND SOLDER.
 - TO JOINT PART ④ INTO PART ④, THEN FIX PART ④ WITH 2 SCREWS (S3,S4).
 - EJECT TRAVEL 8.0mm
- ④ MATERIAL
- PART ④ (HEADER ASSY)
 - HOUSING : HIGH TEMPERATURE THERMOPLASTIC UL94V-0
 - PIN : PHOSPHOR BRONZE
 - PART ④ (EJECT MECHANISM ASSY)
 - GUIDE : HIGH TEMPERATURE THERMOPLASTIC UL94V-0 BLACK
 - PUSH ROD : FLAME RETARDANT UL94V-0
 - PLATE : STAINLESS
 - EMI CONTACT : PHOSPHOR BRONZE
 - STANDOFF : ZINC ALLOYS DIE CASTING
- ⑤ FINISH
- PIN
 - UNDER PLATING : 0.5µm MIN. Ni
 - CONTACT AREA : 0.076 µm MIN. GOLD
 - SOLDER TAIL : 2.5µm MIN. Sn-Pb OR 2.5µm MIN. PURE Sn.(FOR -*****LF)
 - EMI CONTACT
 - UNDER PLATING : 2.0µm MIN. Ni
 - CONTACT AREA : 0.076 µm MIN. GOLD
 - STAND OFF : 3 ~5µm Ni, OVER 5 ~10µm Cu.
6. PIN NO.
- | | DIM "L" | | |
|------------------|----------|---------|-------------|
| STAND OFF HEIGHT | 4.25±0.1 | 3.5±0.1 | 5.0±0.1 |
| PIN No. | OTHERS | 36,67 | 37,38,39,40 |
- SEE TA-946 FOR PCB LAYOUT.
 - SEE 92140 FOR DETAILED HDR DIMENSION.
 - SEE SHEET 1, 2 REGARDING COMPONENTS.
 - GENERAL TOLERANCE : ±0.3.
 - PRODUCT SPEC:110-263

mat'l. code	surface	tolerance	projection	product family
	ISO1302	ISO1101 ISO406		PCMCIA
ltr	ecn no	dr	date	title
x				68P EJECTOR HEADER ASSY FOR TYPE I/II/III (FOR 5.0V)
				dwg no
				92193
				sheet. 6 of 10
				size A4
				type Product Customer Drawing
sheet index	revision sheet			

PRODUCT NO.	92193-501CA
92193-500CA/500CALF	92193-501CAH
92193-500CAH/500CAHLF	92193-502CA
92193-500FA/500FALF	92193-502CAH
92193-502FA	



NOTE

- EJECT FORCE 3.5kg MAX.
- ASSY PROCESS
2.1 TO MOUNT PART ④ ON PWB WITH SCREW (S1,S2) AND SOLDER.
2.2 TO JOINT PART ⑤ INTO PART ④, THEN FIX PART ④ WITH 2 SCREWS (S3,S4).
- EJECT TRAVEL 8.0mm
- MATERIAL
4.1 PART ④ (HEADER ASSY)
HOUSING : HIGH TEMPERATURE THERMOPLASTIC UL94V-0
PIN : PHOSPHOR BRONZE
4.2 PART ⑤ (EJECT MECHANISM ASSY)
GUIDE : HIGH TEMPERATURE THERMOPLASTIC UL94V-0 BLACK
PUSH ROD : FLAME RETARDANT UL94V-0
PLATE : STAINLESS
EMI CONTACT : PHOSPHOR BRONZE
- OPTIONAL HOLD-DOWN : BRASS

FINISH

- 5.1 PIN
UNDER PLATING : 0.5µm MIN. Ni
CONTACT AREA : 0.076 µm MIN. GOLD
SOLDER TAIL : 2.5µm MIN. Sn-Pb
OR 2.5µm MIN. PURE Sn (FOR -*****LF)

5.2 EMI CONTACT

- UNDER PLATING : 2.0µm MIN. Ni
CONTACT AREA : 0.076 µm MIN. GOLD
5.3 OPTIONAL HOLD-DOWN : 2.5µm MIN. PURE Sn

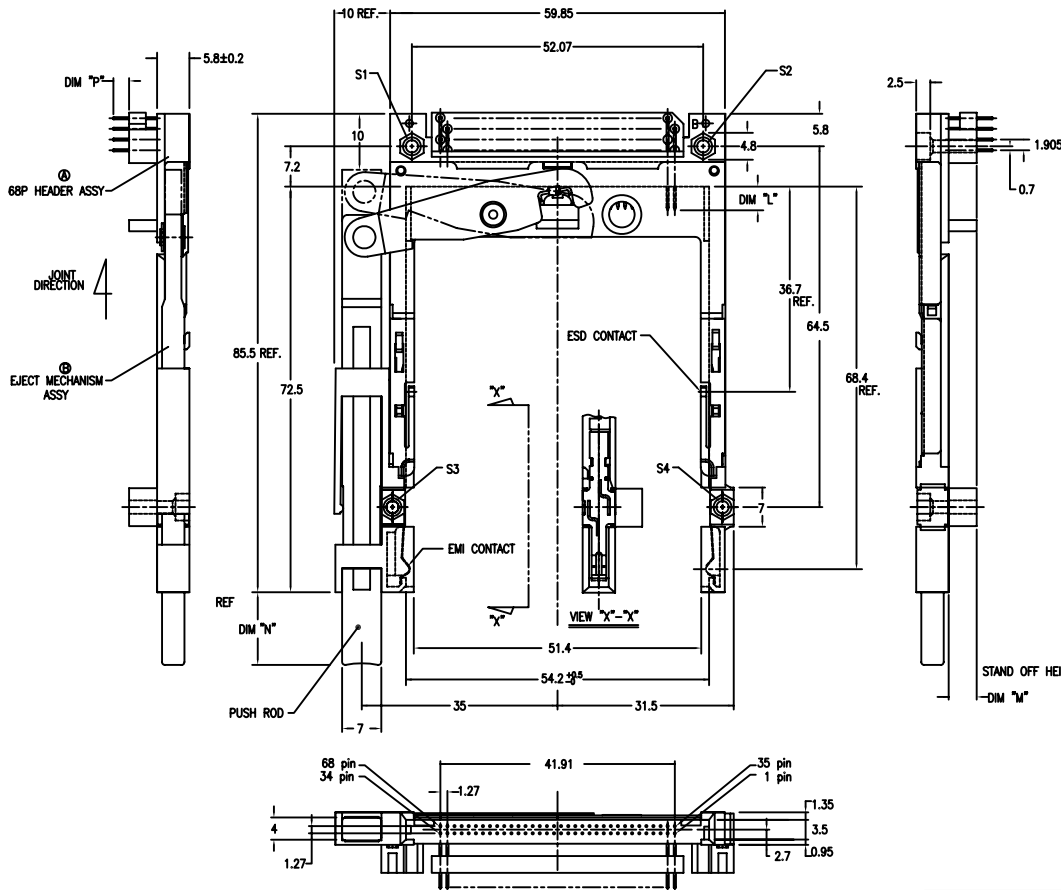
6. PIN NO.

DIM "L"		
PIN No.	OTHERS	36.67
4,25±0.1	3,5±0.1	5,0±0.1
		1,7±0.4
		35±0.08

- SEE TA-946 FOR PCB LAYOUT.
- SEE 92140 FOR DETAILED HDR DIMENSION.
- SEE SHEET 1, 2 REGARDING COMPONENTS.
- GENERAL TOLERANCE : ±0.3.
- PRODUCT SPEC:110-263

mat'l. code	surface	tolerance	projection	product family
	ISO1302	ISO1101 ISO406		PCMCIA
ltr	ecn no	dr	date	title
x				68P EJECTOR HEADER ASSY FOR TYPE I/II/III (FOR 5.0V)
			angles	scale 1:1
			0°±2'	MM
	dr	M.Hasegawa	4/25/05	dwg no
	engr	M.Hasegawa	4/25/05	sheet. 7 of 10 size
	chr	M.Hasegawa	4/25/05	92193 A4
	appd	M.Hasegawa	4/25/05	type Product Customer Drawing
sheet	revision			
index	sheet			

PRODUCT NO.
92193-500CA/500CALF
92193-540CA/540CALF
92193-550CA/550CALF



- NOTE
- EJECT FORCE 3.5kg MAX.
 - ASSY PROCESS
 - TO MOUNT PART ④ ON PWB WITH SCREW (S1,S2) AND SOLDER.
 - TO JOINT PART ④ INTO PART ④, THEN FIX PART ④ WITH 2 SCREWS (S3,S4).
 - EJECT TRAVEL 8.0mm
 - MATERIAL
 - PART ④ (HEADER ASSY)
 - HOUSING : HIGH TEMPERATURE THERMOPLASTIC UL94V-0
 - PIN : PHOSPHOR BRONZE
 - PART ④ (EJECT MECHANISM ASSY)
 - GUIDE : HIGH TEMPERATURE THERMOPLASTIC UL94V-0 BLACK
 - PUSH ROD : FLAME RETARDANT UL94V-0
 - PLATE : STAINLESS
 - EMI CONTACT : PHOSPHOR BRONZE
 - STANDOFF : ZINC ALLOYS DIE CASTING
 - FINISH
 - PIN
 - UNDER PLATING : 0.5µm MIN. Ni
 - CONTACT AREA : 0.076 µm MIN. GOLD
 - SOLDER TAIL : 2.5µm MIN. Sn-Pb OR 2.5µm MIN. PURE Sn (FOR -*****LF)
 - EMI CONTACT
 - UNDER PLATING : 2.0µm MIN. Ni
 - CONTACT AREA : 0.076 µm MIN. GOLD
 - STAND OFF : 3 ~5µm Ni, OVER 5 ~10µm Cu.
 - PIN NO.

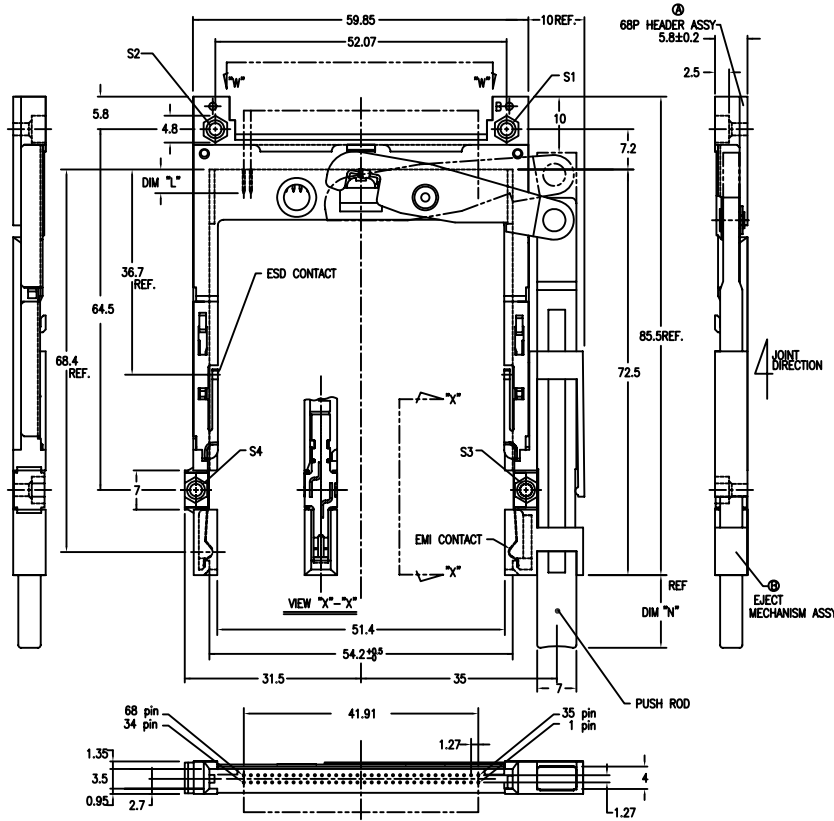
	4.25±0.1	3.5±0.1	5.0±0.1
PIN No.	OTHERS	36,67	37,78
- SEE TA-946 FOR PCB LAYOUT.
- SEE 92140 FOR DETAILED HDR DIMENSION.
- SEE SHEET 1,2 REGARDING COMPONENTS.
- GENERAL TOLERANCE : ±0.3.
- PRODUCT SPEC:110-263

STAND OFF HEIGHT

	4.25±0.1	3.5±0.1	5.0±0.1
PIN No.	OTHERS	36,67	37,78

mat'l. code	surface ISO1302	tolerance ISO1101 ISO406	projection 	product family PCMCIA
ltr	ecn no	dr	date	title
x				68P EJECTOR HEADER ASSY FOR TYPE I/II/III (FOR 5.0V)
				dwg no 92193 sheet. 8 of 10 size A4
				type Product Customer Drawing
sheet index	revision sheet			

PRODUCT NO.	92193-601CAH
92193-600CA/600CALF	92193-602CA
92193-600CAH/600CAHL	92193-602CAH
92193-601CA	



NOTE

- EJECT FORCE 3.5kg MAX.
- ASSY PROCESS
 - TO MOUNT PART ① ON PWB WITH SCREW (S1,S2) AND SOLDER
 - TO MOUNT PART ② INTO PART ①, THEN FIX PART ② WITH 2 SCREWS (S3,S4).
- EJECT TRAVEL 8.0mm
- MATERIAL
 - PART ① (HEADER ASSY)
 - HOUSING : HIGH TEMPERATURE THERMOPLASTIC UL94V-0
 - PIN : PHOSPHOR BRONZE
 - PART ② (EJECT MECHANISM ASSY)
 - GUIDE : HIGH TEMPERATURE THERMOPLASTIC UL94V-0 BLACK
 - PUSH ROD : FLAME RETARDANT UL94V-0
 - PLATE : STAINLESS
 - EMI CONTACT : PHOSPHOR BRONZE
- OPTIONAL HOLD-DOWN : BRASS

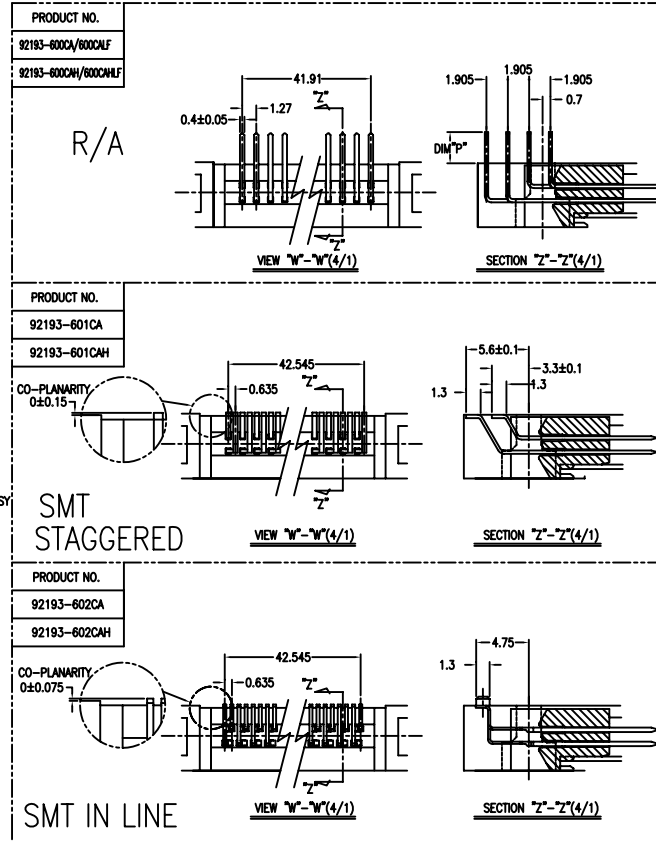
⑤ FINISH

- PIN
 - UNDER PLATING : 0.5µm MIN. Ni
 - CONTACT AREA : 0.076 µm MIN. GOLD
 - SOLDER TAIL : 2.5µm MIN. Sn-Pb OR 2.5µm MIN. PURE Sn.(FOR -*****LF)
- EMI CONTACT
 - UNDER PLATING : 2.0µm MIN. Ni
 - CONTACT AREA : 0.076 µm MIN. GOLD
- OPTIONAL HOLD-DOWN : 2.5µm MIN. PURE Sn

6. PIN NO.

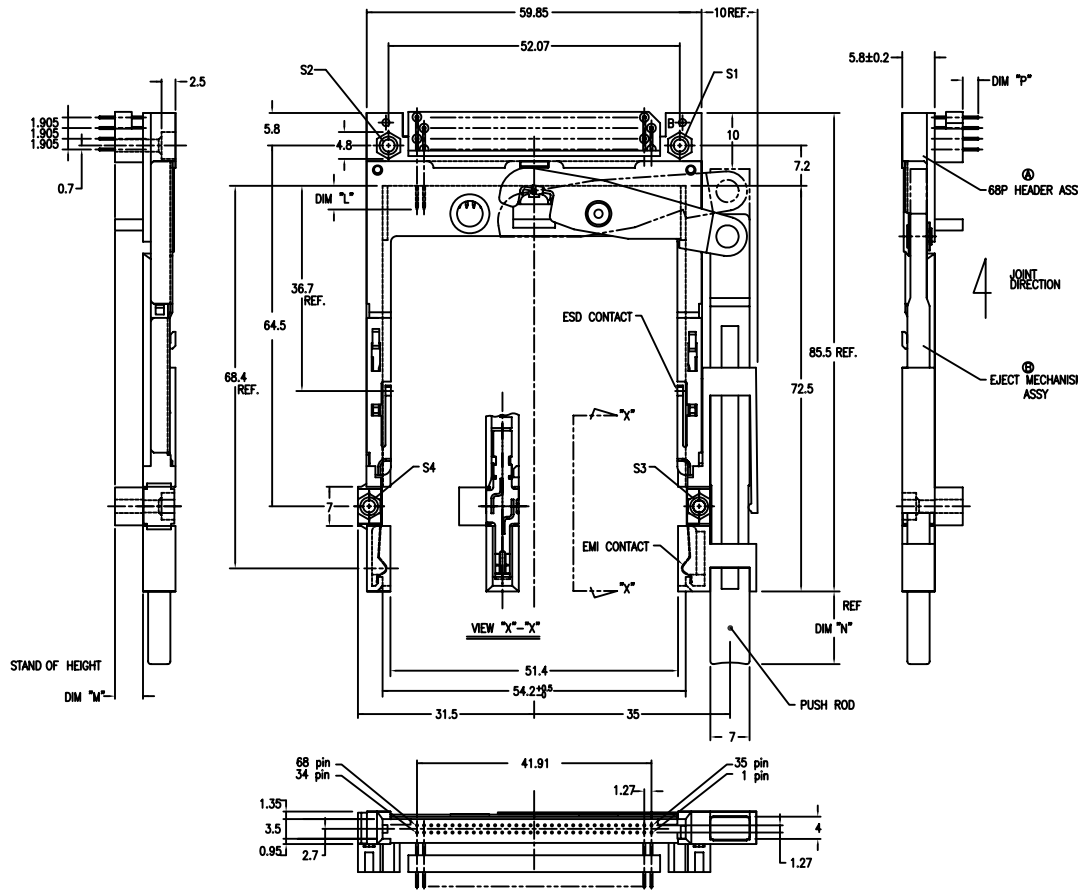
PIN NO.	DIM "L"	DIM "M"
1-34	42.5±0.1	35.5±0.1
35-68	36.67	34.67

- SEE TA-946 FOR PCB LAYOUT.
- SEE 92140 FOR DETAILED HDR DIMENSION.
- SEE SHEET 1,2 REGARDING COMPONENTS.
- GENERAL TOLERANCE : ±0.3
- PRODUCT SPEC:110-263



mat'l. code	surface	tolerance	projection	product family
	ISO1302	ISO1101 ISO406		PCMCIA
ltr	ecn no	dr	date	title
x				68P EJECTOR HEADER ASSY FOR TYPE I/II/III (FOR 5.0V)
				dwg no
				92193
				sheet. 9 of 10
				size A4
				type Product Customer Drawing
sheet	revision			
index	sheet			

PRODUCT NO.
92193-620CA/620CAL
92193-640CA/640CAL
92193-650CA/650CAL



- NOTE
- EJECT FORCE 3.5kg MAX.
 - ASSY PROCESS
 - TO MOUNT PART ④ ON PWB WITH SCREW (S1,S2) AND SOLDER.
 - TO JOINT PART ④ INTO PART ④, THEN FIX PART ④ WITH 2 SCREWS (S3,S4).
 - EJECT TRAVEL 8.0mm
- ④ MATERIAL
- PART ④ (HEADER ASSY)
 - HOUSING : HIGH TEMPERATURE THERMOPLASTIC UL94V-0
 - PIN : PHOSPHOR BRONZE
 - PART ④ (EJECT MECHANISM ASSY)
 - GUIDE : HIGH TEMPERATURE THERMOPLASTIC UL94V-0 BLACK
 - PUSH ROD : FLAME RETARDANT UL94V-0
 - PLATE : STAINLESS
 - EMI CONTACT : PHOSPHOR BRONZE
 - STANDOFF : ZINC ALLOYS DIE CASTING
- ⑤ FINISH
- PIN
 - UNDER PLATING : 0.5µm MIN. Ni
 - CONTACT AREA : 0.076 µm MIN. GOLD
 - SOLDER TAIL : 2.5µm MIN. Sn-Pb OR 2.5µm MIN. PURE Sn.(FOR *****LF)
 - EMI CONTACT
 - UNDER PLATING : 2.0µm MIN. Ni
 - CONTACT AREA : 0.076 µm MIN. GOLD
 - STAND OFF : 3 ~ 5µm Ni, OVER 5 ~ 10µm Cu.
6. PIN NO.
- | PIN No. | DIM "P" | |
|---------|----------|---------|
| | OTHERS | 5.0/0.1 |
| | 4.28±0.1 | 3.5±0.1 |
| | 36.67 | 36.67 |
- SEE TA-946 FOR PCB LAYOUT.
 - SEE 92140 FOR DETAILED HDR DIMENSION.
 - SEE SHEET 1, 2 REGARDING COMPONENTS.
 - GENERAL TOLERANCE : ±0.3
 - PRODUCT SPEC:110-263

A

A

B

B

mat'l. code	surface	tolerance	projection	product family
	ISO1302	ISO1101 ISO406		PCMCIA
ltr	ecn no	dr	date	title
x				68P EJECTOR HEADER ASSY FOR TYPE I/II/III (FOR 5.0V)
				dwg no
				92193
				sheet 10 of 10
				size A4
				type Product Customer Drawing
sheet index	revision sheet			