

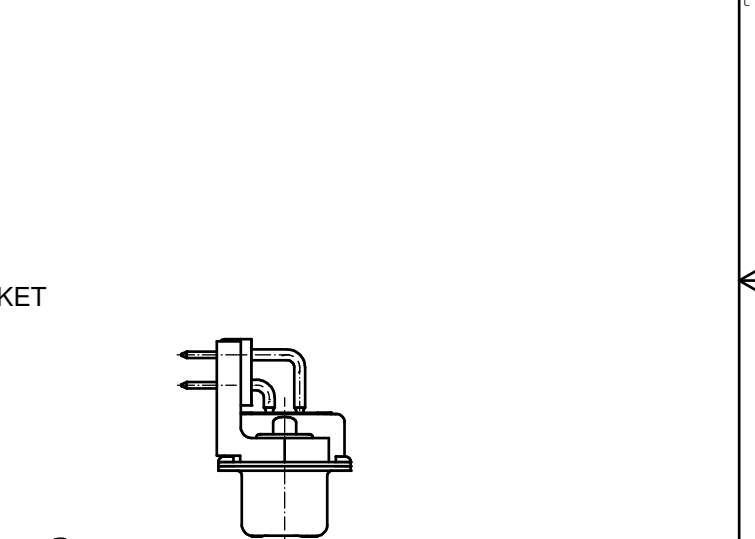
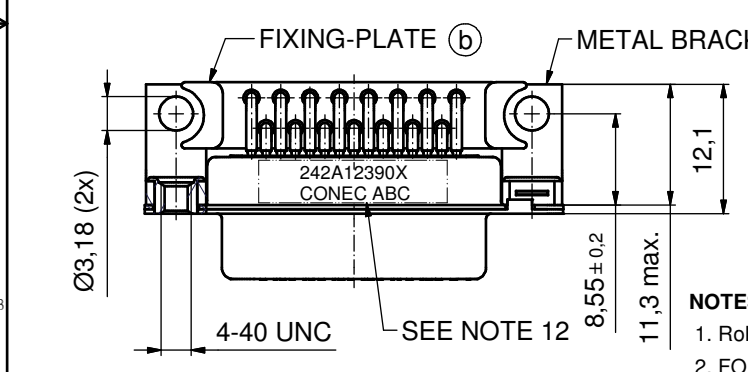
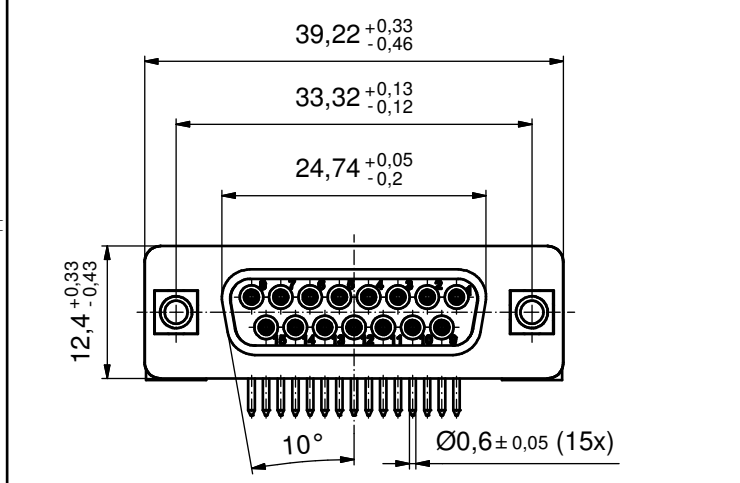
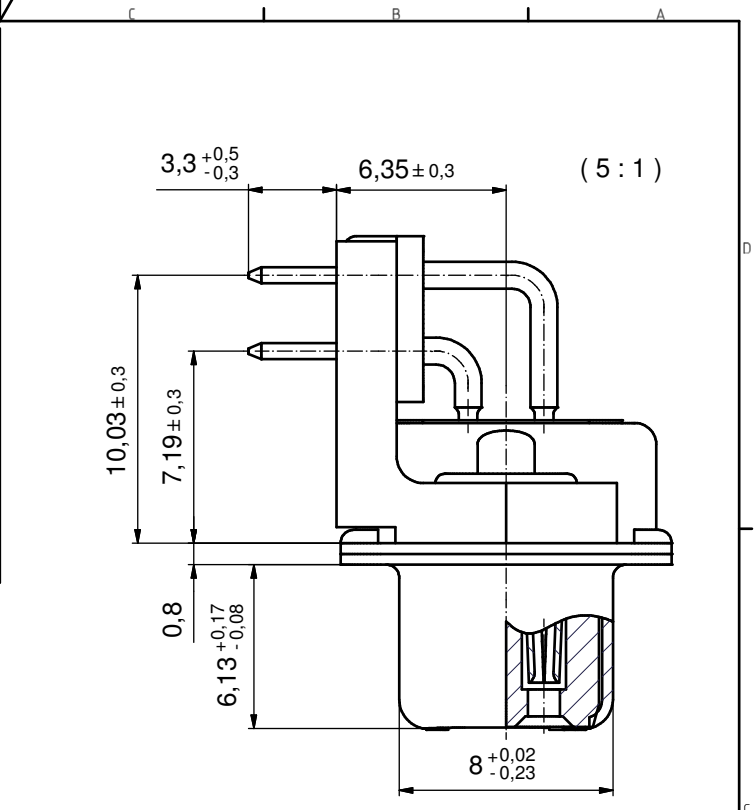
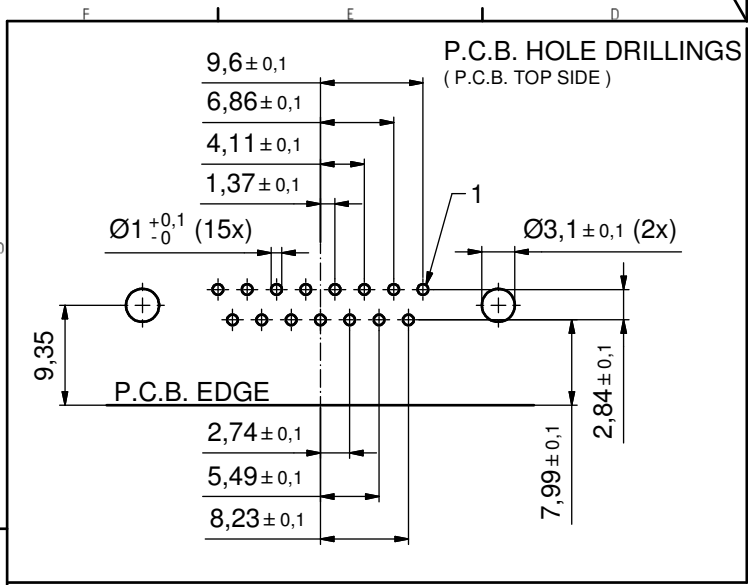
NOTES: (b)

1. RoHS COMPLIANT
2. FOR WAVESOLDERING (SOLDER BATH TEMPERATURE 260°C FOR 5 SEC. AND SOLDER PREHEAT 100°C FOR 30 SEC.)
3. METALSHELLS: STEEL; min. 315µm TIN over 40-80µm NICKEL
4. INSULATOR: HIGH TEMPERATURE PLASTIC UL 94 V-0; BLACK
5. CONTACTS: COPPER ALLOY
PLATING: GOLD FLASH over NICKEL
6. METAL BRACKETS: STEEL; min. 320µm TIN over 80µm NICKEL
7. THREADED INSERTS: COPPER ALLOY; min. 200µm TIN over 80µm NICKEL
8. FIXING PLATE: HIGH TEMPERATURE PLASTIC UL 94 V-0; BLACK
9. CAPACITANCE: 1300pF ± 20%
10. DIELECTRIC WITHSTANDING VOLTAGE: 424 VDC
11. MAXIMUM TORQUE VALUE FOR THREAD: 6 in.LB
12. CONNECTOR IS PART MARKED: 242A12380X CONEC ABC

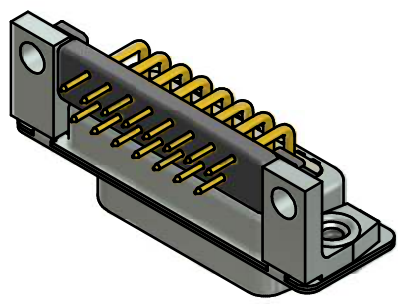
Directive 2002/95/EC RoHS compliant

THIS DRAWING MAY NOT BE COPIED OR REPRODUCED IN ANY WAY, AND MAY NOT BE PASSED ON TO A THIRD PARTY WITHOUT WRITTEN PERMISSION. OWNERSHIP AND COPYRIGHT OF CONEC GmbH DO NOT ALTER CAD DRAWING BY HAND	tolerance		dim. in mm		scale: 2:1 (5:1)	
					material: SEE NOTES	
			date		name	
			drawn 01.08.01		Parei	
			appd. 01.08.01		Mickenbecker	
		norm		DIN 41652		
		d-old				
3 x b		A3838	14.12.10	K.H.	title: D-SUB FILTER FEMALE 90° 9pos. SOLDER PIN ANGLED 0.318inch with threaded insert and metal bracket	
a		Origin			dwg no: 24K1A154A	
rev.		description	date	name	DIN-A3 sh: 1/6	
						part no: 242A12380X





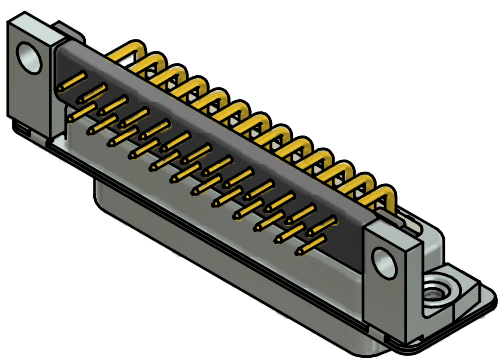
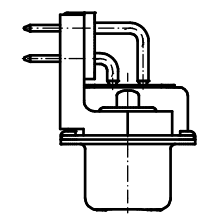
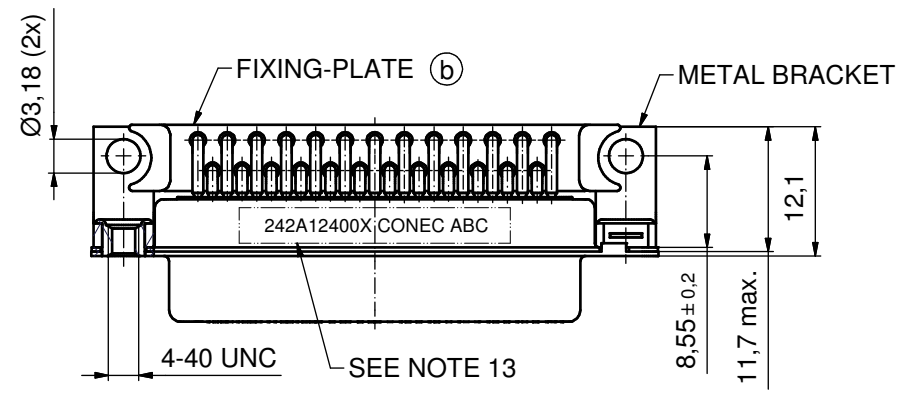
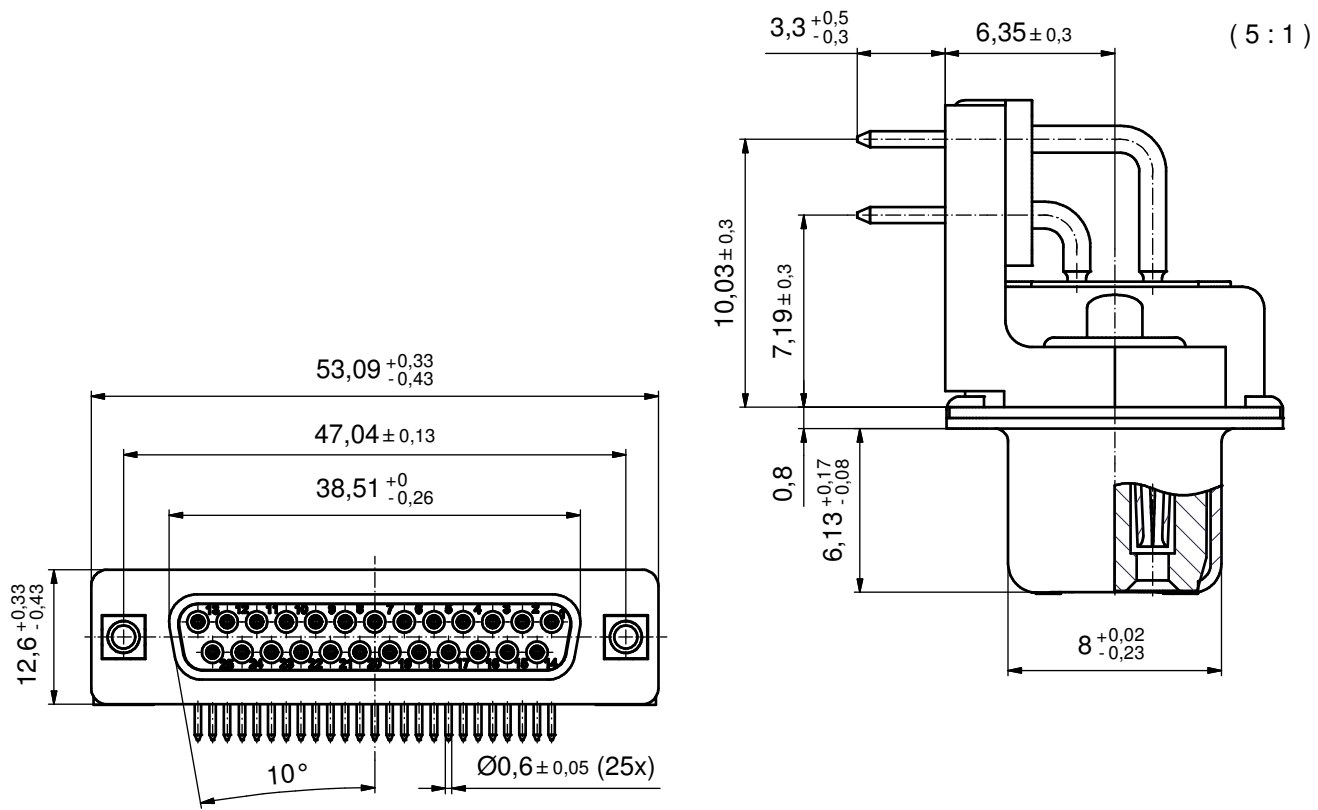
- NOTES:** (b)
1. RoHS COMPLIANT
 2. FOR WAVESOLDERING (SOLDER BATH TEMPERATURE 260°C FOR 5 SEC. AND SOLDER PREHEAT 100°C FOR 30 SEC.)
 3. METALSHIELDS: STEEL; min. 315µm TIN over 40-80µm NICKEL
 4. INSULATOR: HIGH TEMPERATURE PLASTIC UL 94 V-0; BLACK
 5. CONTACTS: COPPER ALLOY
PLATING: GOLD FLASH over NICKEL
 6. METAL BRACKETS: STEEL; min. 320µm TIN over 80µm NICKEL
 7. THREADED INSERTS: COPPER ALLOY; min. 200µm TIN over 80µm NICKEL
 8. FIXING PLATE: HIGH TEMPERATURE PLASTIC UL 94 V-0; BLACK
 9. CAPACITANCE: 1300pF ±20%
 10. DIELECTRIC WITHSTANDING VOLTAGE: 424 VDC
 11. MAXIMUM TORQUE VALUE FOR THREAD: 6 in.LB
 12. CONNECTOR IS PART MARKED: 242A12390X CONEC ABC



Directive 2002/95/EC RoHS compliant

THIS DRAWING MAY NOT BE COPIED OR REPRODUCED IN ANY WAY, AND MAY NOT BE PASSED ON TO A THIRD PARTY WITHOUT WRITTEN PERMISSION. OWNERSHIP AND COPYRIGHT OF CONEC GmbH DO NOT ALTER CAD DRAWING BY HAND	tolerance		dim. in mm		scale: 2:1 (5:1)	
					material: SEE NOTES	
	date		name		title:	
	drawn	01.08.01	Perei		D-SUB FILTER FEMALE 90°	
appd.	01.08.01	Mickenbecker		15pos. SOLDER PIN ANGLED 0.318inch		
norm	DIN 41652		d-old		with threaded insert and metal bracket	
3 x b	Ä38138	14.12.10	K.H.	dwg no:		DIN-A3
a	Origin			24K1A154A		(b) sh: 2/6
rev.	description	date	name	part no:		242A12390X





- NOTES:** (b)
1. RoHS COMPLIANT
 2. FOR WAVESOLDERING (SOLDER BATH TEMPERATURE 260°C FOR 5 SEC. AND SOLDER PREHEAT 100°C FOR 30 SEC.)
 3. METALSHIELDS: STEEL; min. 315µin TIN over 40-80µin NICKEL
 4. INSULATOR: HIGH TEMPERATURE PLASTIC UL 94 V-0; BLACK
 5. CONTACTS: COPPER ALLOY
PLATING: GOLD FLASH over NICKEL
 6. METAL BRACKETS: STEEL; min. 320µin TIN over 80µin NICKEL
 7. THREADED INSERTS: COPPER ALLOY; min. 200µin TIN over 80µin NICKEL
 8. FIXING PLATE: HIGH TEMPERATURE PLASTIC UL 94 V-0; BLACK
 9. CAPACITANCE: 1300pF ± 20%
 10. DIELECTRIC WITHSTANDING VOLTAGE: 424 VDC
 11. P.C.B. HOLE DRILLINGS ON SHEET 4
 12. MAXIMUM TORQUE VALUE FOR THREAD: 6 in.LB
 13. CONNECTOR IS PART MARKED: 242A12400X CONEC ABC

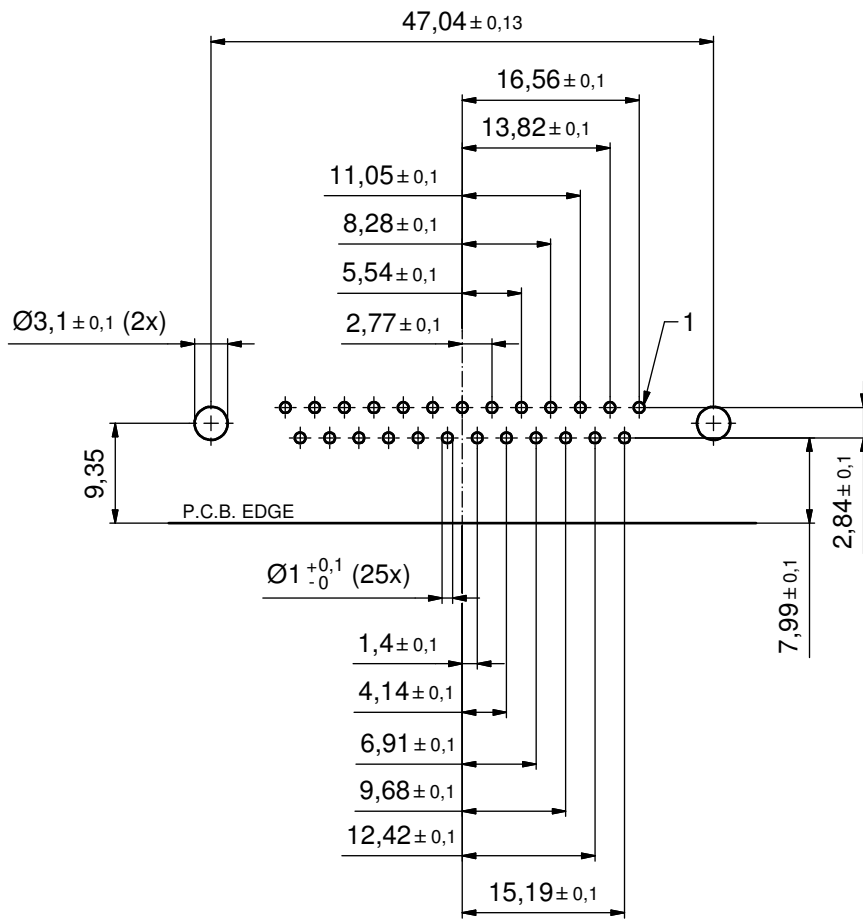
Directive 2002/95/EC RoHS compliant

THIS DRAWING MAY NOT BE COPIED OR REPRODUCED IN ANY WAY, AND MAY NOT BE PASSED ON TO A THIRD PARTY WITHOUT WRITTEN PERMISSION. OWNERSHIP AND COPYRIGHT OF CONEC GmbH DO NOT ALTER CAD DRAWING BY HAND	tolerance		dim. in mm		scale:	2:1 (5:1)
					material:	SEE NOTES
	date	name		title:		
	drawn	01.08.01	Parei		D-SUB FILTER FEMALE 90°	
appd.	01.08.01	Mickenbecker		25pos. SOLDER PIN ANGLED 0.318inch		
norm	DIN 41652		with threaded insert and metal bracket			
d-old						
3 x b	A3838	14.12.10	K.H.	dwg no:	DIN-A3	
a	Origin			24K1A154A		(b) sh: 3/6
rev.	description	date	name	part no:		242A12400X

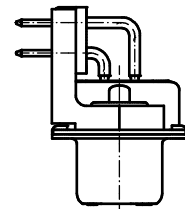
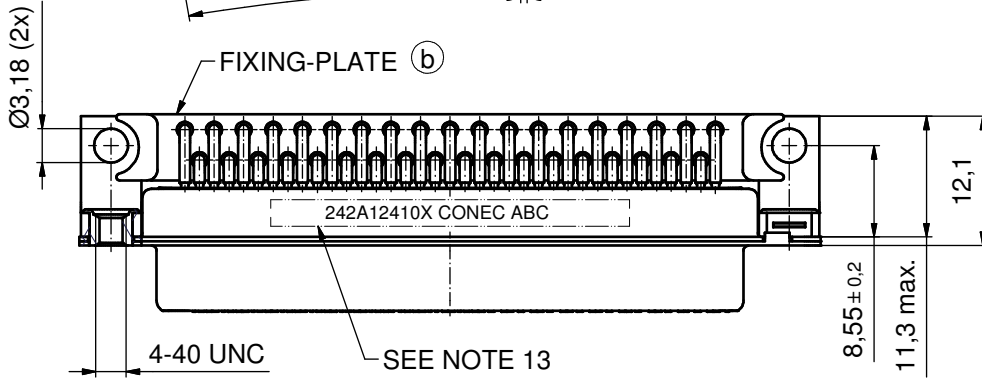
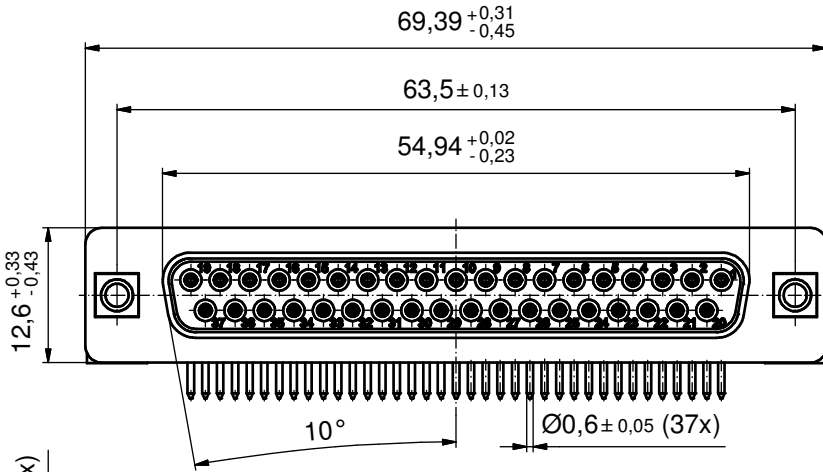
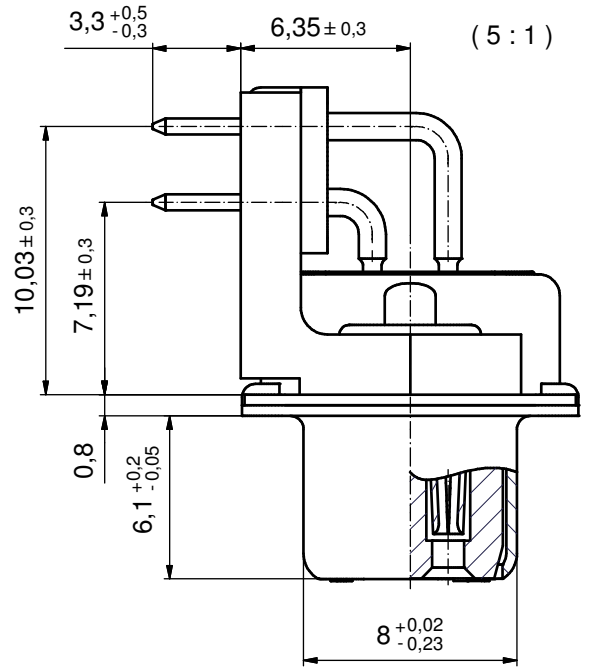
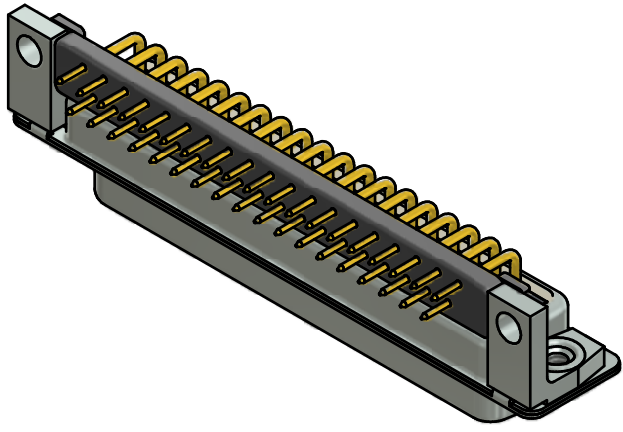


P.C.B. HOLE DRILLINGS

(P.C.B. TOP SIDE)



THIS DRAWING MAY NOT BE COPIED OR REPRODUCED IN ANY WAY, AND MAY NOT BE PASSED ON TO A THIRD PARTY WITHOUT WRITTEN PERMISSION. OWNERSHIP AND COPYRIGHT OF CONEC GmbH DO NOT ALTER CAD DRAWING BY HAND					tolerance		scale: 2:1
					date	name	material: SEE SHEET3
					drawn	01.08.10	Perei
					appd.	01.08.10	Mickenbecker
					norm		
					d-old		
					title: P.C.B. HOLE DRILLINGS		
					D-SUB Filter Female 25pos. 0.318inch with threaded insert and metal bracket		
					dwg no: 24K1A154A		DIN-A3
					part no: SEE SHEET3		sh: 4/6



NOTES: (b)

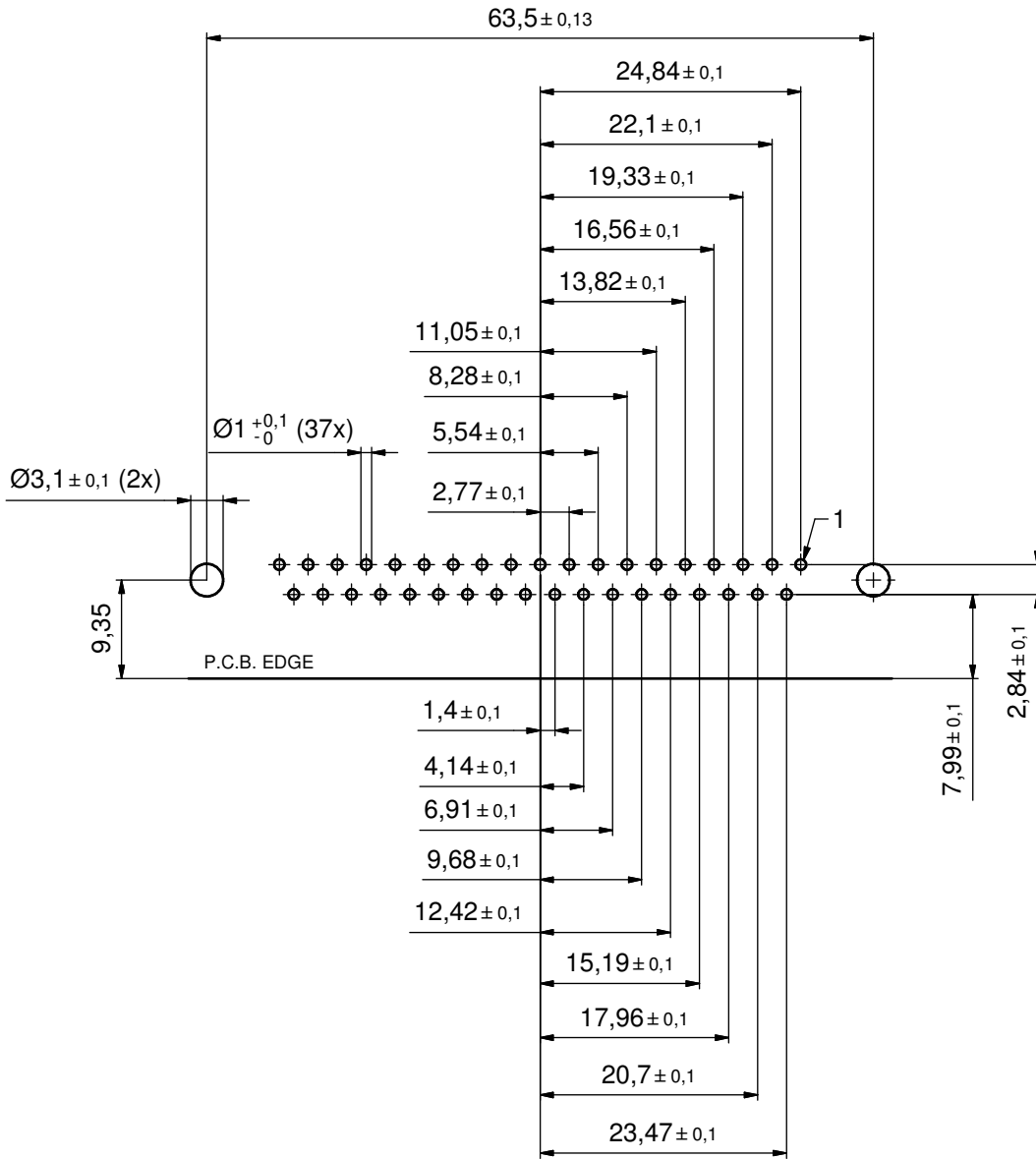
1. RoHS COMPLIANT
2. FOR WAVESOLDERING (SOLDER BATH TEMPERATURE 260°C FOR 5 SEC. AND SOLDER PREHEAT 100°C FOR 30 SEC.)
3. METALSHELLS: STEEL; min. 315µin TIN over 40-80µin NICKEL
4. INSULATOR: HIGH TEMPERATURE PLASTIC UL 94 V-0; BLACK
5. CONTACTS: COPPER ALLOY
PLATING: GOLD FLASH over NICKEL
6. METAL BRACKETS: STEEL; min. 320µin TIN over 80µin NICKEL
7. THREADED INSERTS: COPPER ALLOY; min. 200µin TIN over 80µin NICKEL
8. FIXING PLATE: HIGH TEMPERATURE PLASTIC UL 94 V-0; BLACK
9. CAPACITANCE: 1300pF ± 20%
10. DIELECTRIC WITHSTANDING VOLTAGE: 424 VDC
11. P.C.B. HOLE DRILLINGS ON SHEET 6
12. MAXIMUM TORQUE VALUE FOR THREAD: 6 in.LB
13. CONNECTOR IS PART MARKED: 242A12410X CONEC ABC

Directive 2002/95/EC RoHS compliant.

THIS DRAWING MAY NOT BE COPIED OR REPRODUCED IN ANY WAY, AND MAY NOT BE PASSED ON TO A THIRD PARTY WITHOUT WRITTEN PERMISSION. OWNERSHIP AND COPYRIGHT OF CONEC GmbH DO NOT ALTER CAD DRAWING BY HAND	tolerance		dim. in mm	scale: 2:1 (5:1)		
				material: SEE NOTES		
	3 x b	A3838	15.12.10	K.H.	title:	
	a	Origin			D-SUB FILTER FEMALE 90° 37pos. SOLDER PIN ANGLED 0.318inch with threaded insert and metal bracket	
rev.	description	date	name		dwg no: 24K1A154A part no: 242A12410X	
				DIN-A3 sh: 5/6		

P.C.B. HOLE DRILLINGS

(P.C.B. TOP SIDE)



Directive 2002/95/EC RoHS compliant

THIS DRAWING MAY NOT BE COPIED OR REPRODUCED IN ANY WAY, AND MAY NOT BE PASSED ON TO A THIRD PARTY WITHOUT WRITTEN PERMISSION. OWNERSHIP AND COPYRIGHT OF CONEC GmbH DO NOT ALTER CAD DRAWING BY HAND				tolerance		scale: 2:1
				date	name	material: SEE SHEET 5
				drawn	28.09.01	Parei
				appd.	28.09.10	Mickenbecker
			norm			title: P.C.B. HOLE DRILLINGS
			d-old			D-SUB Filter Female 37pos. 0.318inch
						with threaded insert and metal bracket
						dwg no:
						24K1A154A
						DIN-A3
						sh: 6/6
						part no: SEE SHEET 5

