

1 2 3 4 5 6 7 8

F

F

E

E

D

D

C

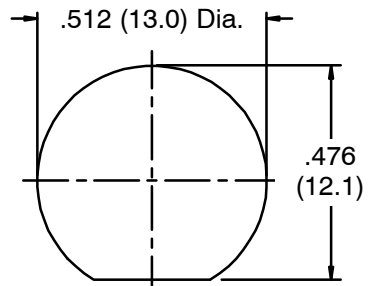
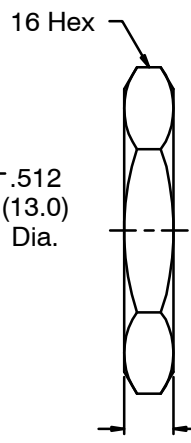
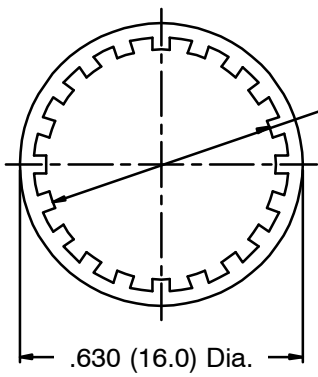
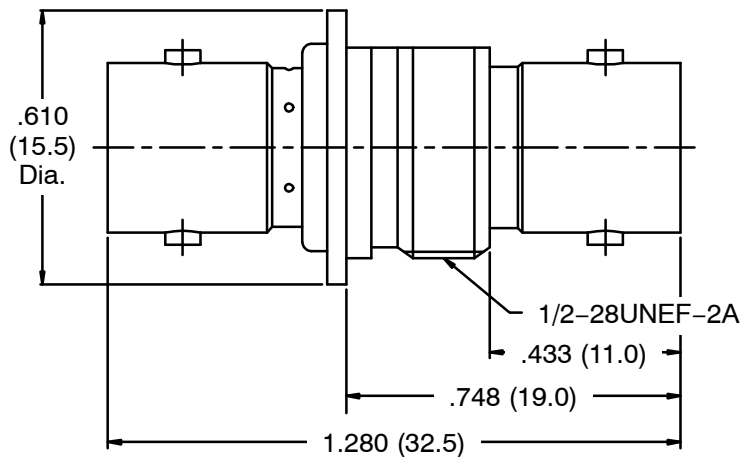
C

B

B

A

A



Recommended Mounting Hole

- NOTES: Finish (Plating Thickness in Micro-inches)
1. Brass
 2. Nickel Pl. 100 Min. Thick over Copper Pl. 50 Min. Thick
 3. Phosphor Bronze
 4. Gold Pl. 3 Min Thick over Nickel Pl. 50 Min. Thick over Copper Pl. 50 Min. Thick
 5. DELRIN

RoHS Compliant

8	Hex-Nut	Note 1	Note 2	1		Dimensions are in Inches Unless Otherwise Specified Tolerances 0.5-6 = ±0.2 6-30 = ±0.4 30-120 = ±0.6 120-315 = ±1 315-1000 = ±1.6 1000-2000 = ±2.4	Part No.		<h1>NTE Electronics</h1>	
7	Lock Washer	Note 1	Note 2	1			Approved	Date		Title
6	Housing	Note 1	Note 2	1			Checked	Date		
5	Body	Note 1	Note 2	1			Drawn	Date		Drawing No.
4	Insulator	Note 5	Natural	1				1-23-2013	06-B008	
3	Contact Pin	Note 3	Note 4	1				1-23-2013		
2	Insulator	Note 5	Natural	2				1-23-2013		
1	Body	Note 1	Note 2	1				1-23-2013	File No.	
No	Description	Material	Finish	Q'ty	Drawing No.	Scale	2.5/1	Issue	A	

1 2 3 4 5 6 7 8