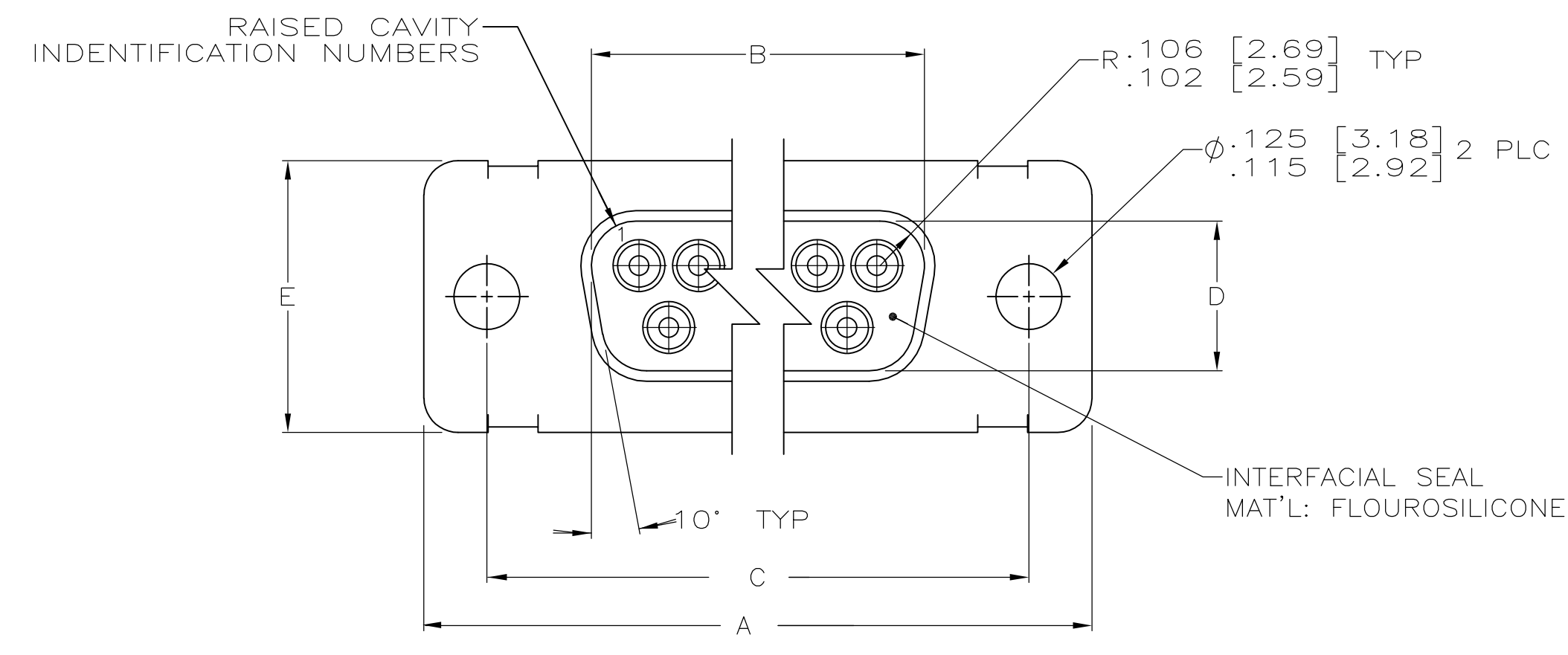
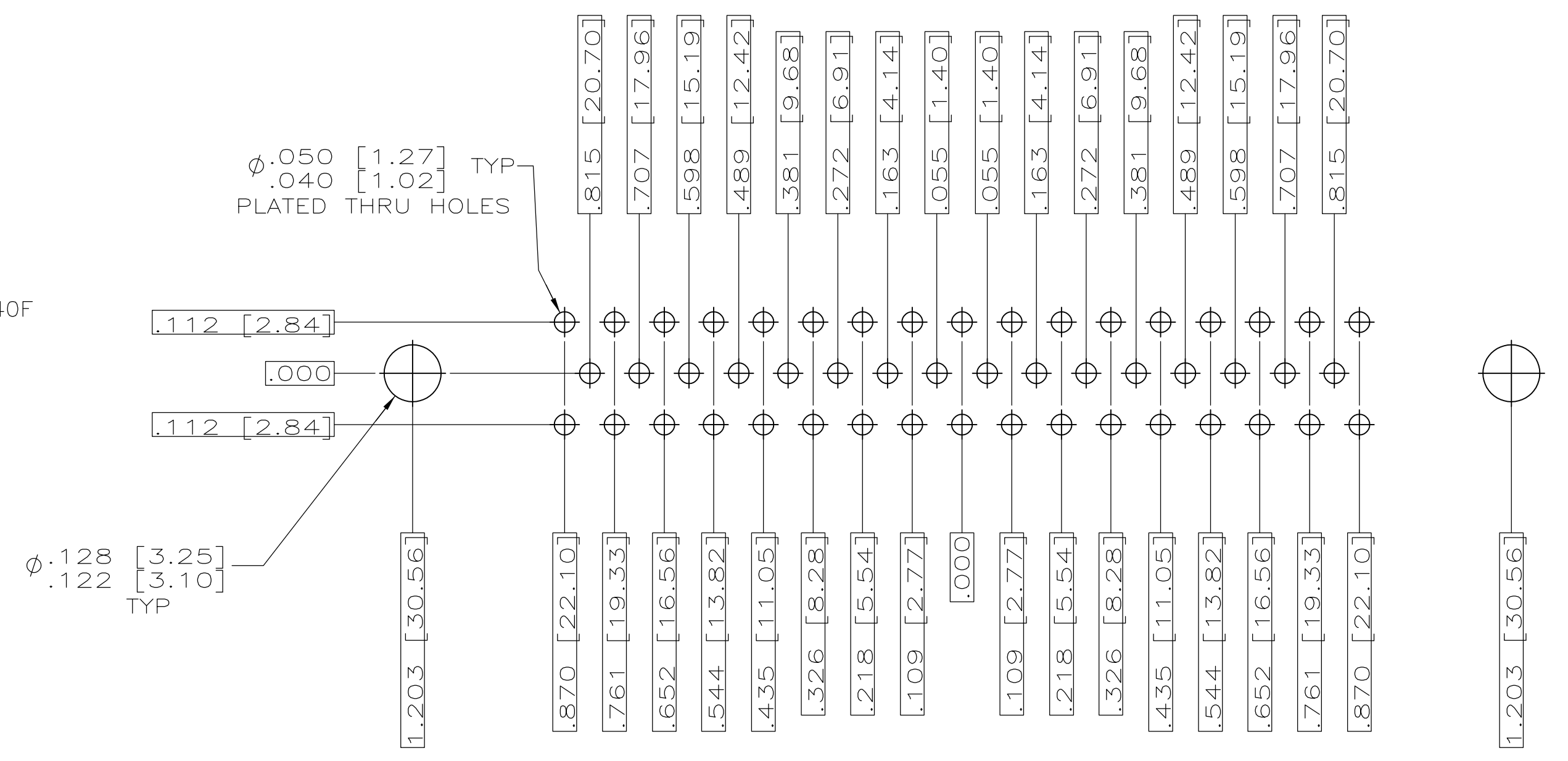
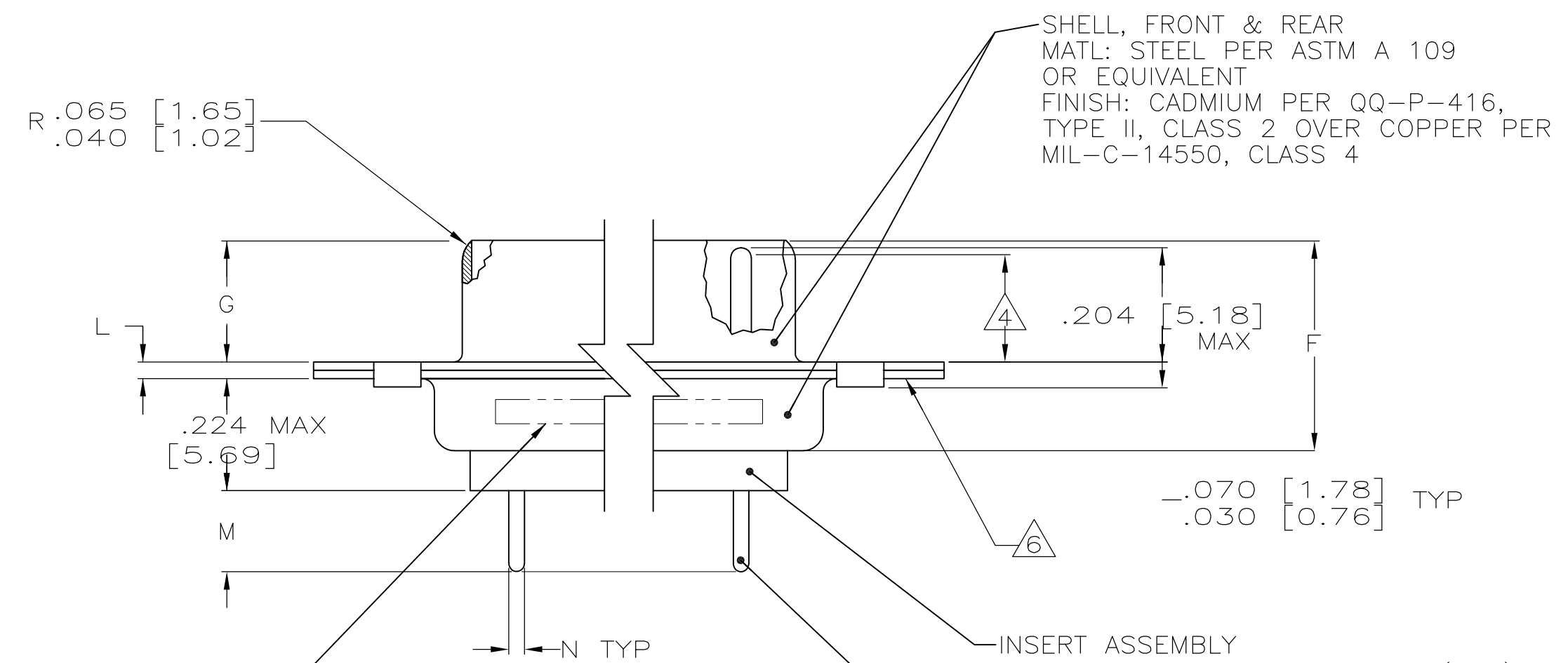


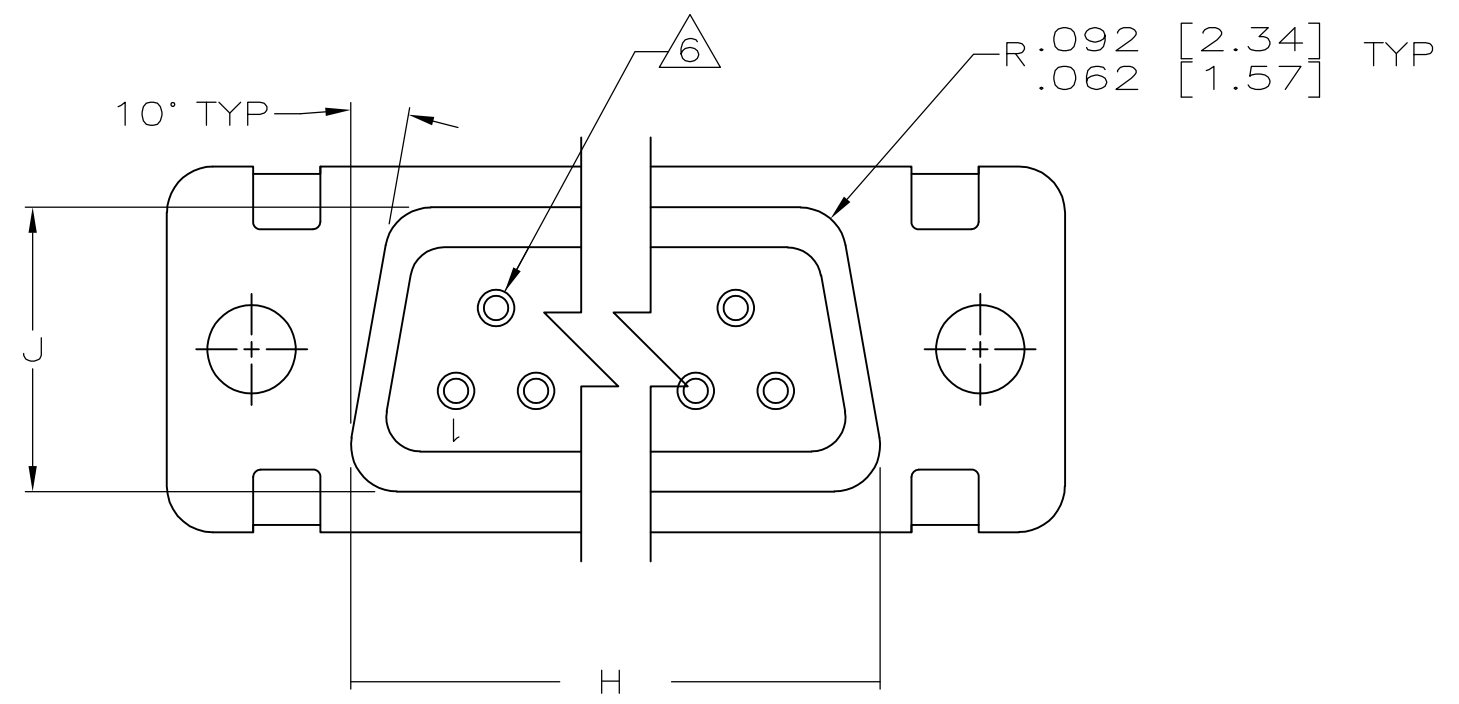
REVISONS		DATE	DWN	APVD
DF	D0	24NOV09	PY	DM
TP	LTR	DESCRIPTION		
A		REV PER ECO-09-25654		



- 1 TRUE POSITION TOLERANCE FOR P.C.BOARD LAYOUT IS .010 [0.25] AT MAX MATERIAL CONDITION. SUGGESTED BOARD THICKNESS IS .094 [2.39]
- 2 THE CONNECTORS DESCRIBED IN THIS DOCUMENT MEET THE REQUIREMENTS OF MIL-C-24308 AND MATE WITH ANY RECEPTACLE CONNECTOR WITH SAME INSERT ARRANGEMENT.
- 3 MARK WITH .047 [1.19]-.062 [1.57] HIGH CHARACTERS. FAR SIDE REFERS TO THE WIDE SIDE OF THE KEYSTONE. NEAR SIDE REFERS TO THE NARROW SIDE OF THE KEYSTONE. IF THE REAR SHELL IS TOO SMALL FOR "AMP", AMP PART NUMBER AND DATE CODE, THEN SPLIT AS FOLLOWS:
 A. AMP PART NUMBER ON REAR SHELL, FAR SIDE.
 B. "AMP" AND DATE CODE ON FRONT SHELL, FAR SIDE.
- 4 REQUIREMENT FOR FULL PIN DIAMETER EXTENSION:
 .159 [4.04] MIN, SHELL SIZES 1 AND 2.
 .150 [3.81] MIN, SHELL SIZES 3, 4, AND 5.
- 5 THIS DRAWING SHALL BE INTERPRETED IN ACCORDANCE WITH APPLICABLE STANDARDS LISTED IN MIL-STD-100.
- 6 APPLY EPOXY BETWEEN THE CONTACT AND INSERT AND BETWEEN THE FRONT AND REAR SHELLS AND INSERT.



3 MARK TE, TE PART NO AND DATE CODE, FAR SIDE.



.033 [0.84] / .027 [0.69]	.176 [4.47] / .136 [3.45]	.049 [1.24] / .029 [0.74]	.544 [13.82] / .524 [13.31]	2.188 [55.58] / 2.168 [55.07]	.236 [5.99] / .224 [5.69]	.436 [11.07] / .416 [10.57]	.620 [15.75] / .590 [14.99]	.446 [11.33] / .436 [11.07]	2.411 [61.24] / 2.401 [60.99]	2.084 [52.93] / 2.074 [52.68]	2.650 [67.31] / 2.620 [66.55]	MS18277-1	50	5	1663842-5	1663842-5
N	M	L	J	H	G	F	E	D	C	B	A	INSERT ARRANGEMENT	NO OF POS	SHELL SIZE	AMP P/N ON CONNECTOR	PART NUMBER

THIS DRAWING IS A CONTROLLED DOCUMENT.

DIMENSIONS: INCHES [mm]

TOLERANCES UNLESS OTHERWISE SPECIFIED:

Ø	±
PLC	±
PLC	±
PLC	±
PLC	±
PLC	±
ANGLES	±
FINISH	±

MATERIAL: SEE CALLOUTS

FINISH: SEE CALLOUTS

WEIGHT: -

CUSTOMER DRAWING

APVD: D.MILLER

DATE: 12-9-03

NAME: AMP/MLITE PLUG ASSY, LOW PROFILE SIZE 20 POSTED P.C. BOARD CONTACTS .030 DIA SHORT POST, SERIES 109 WITH INTERFACIAL SEAL AND EPOXY SEALING

SIZE: A

SCALE: 4:1

SHEET 1 OF 1

REV A