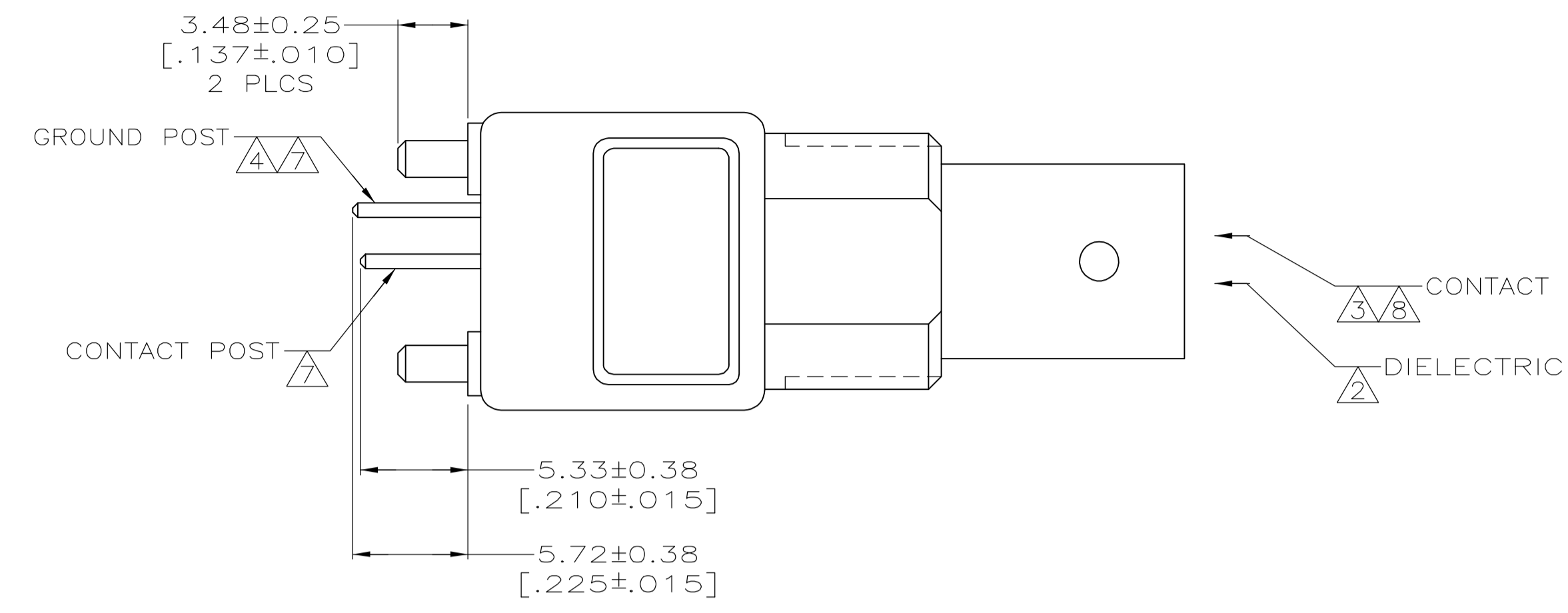
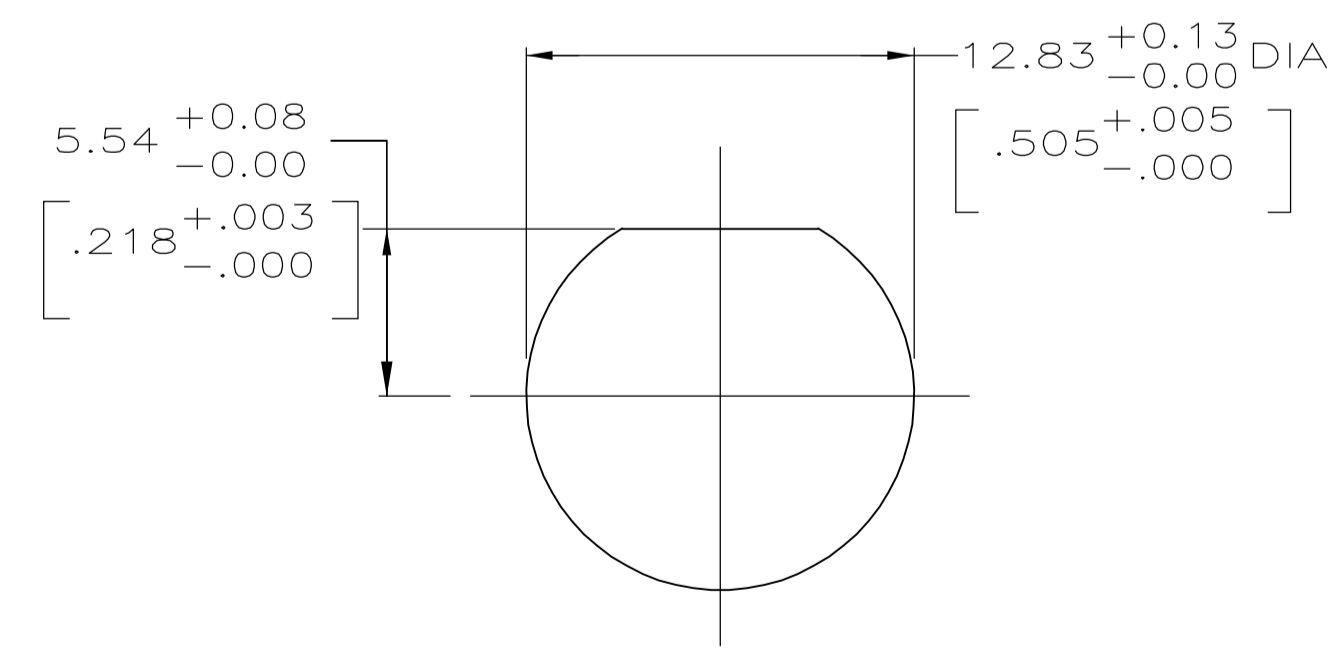
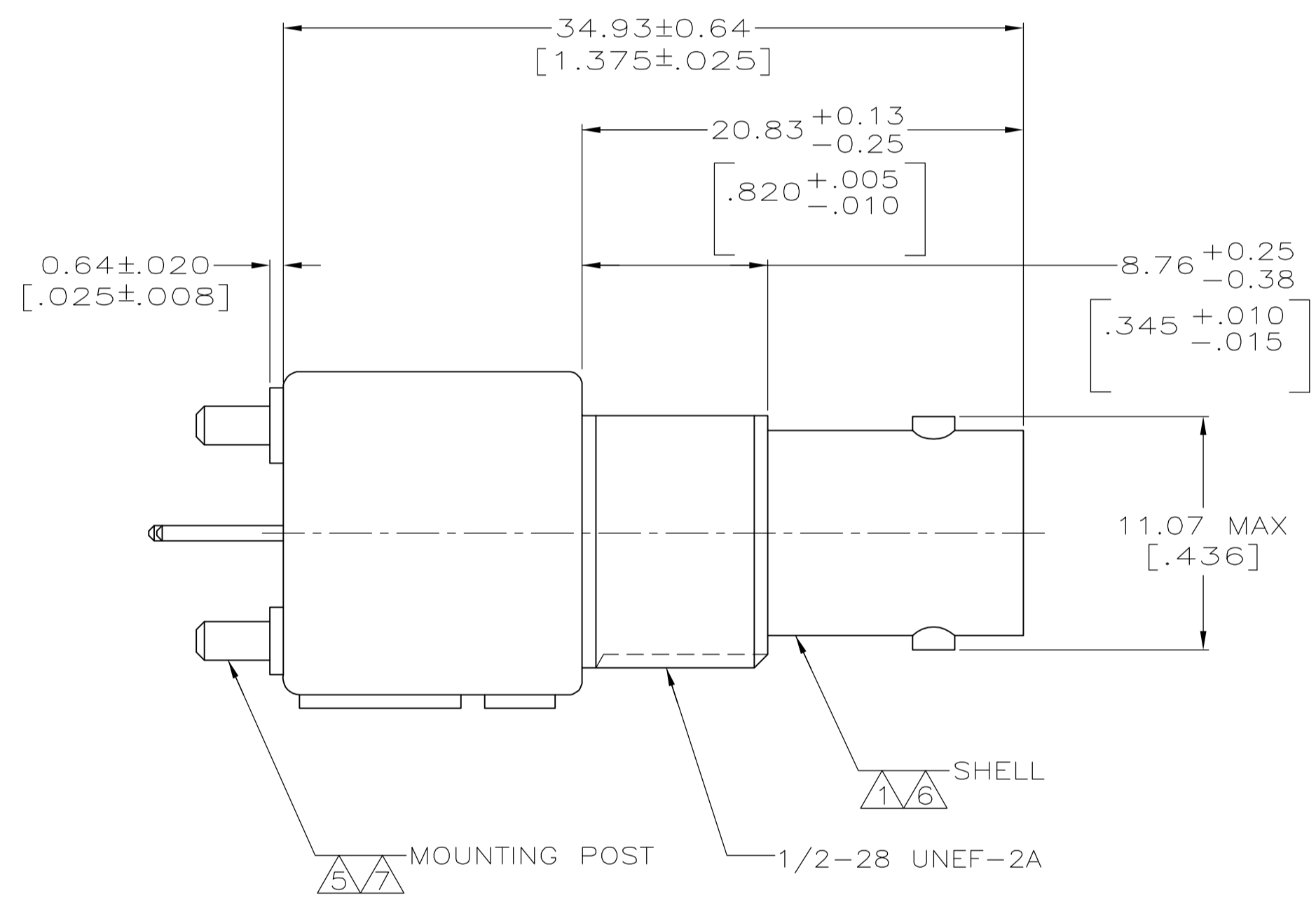
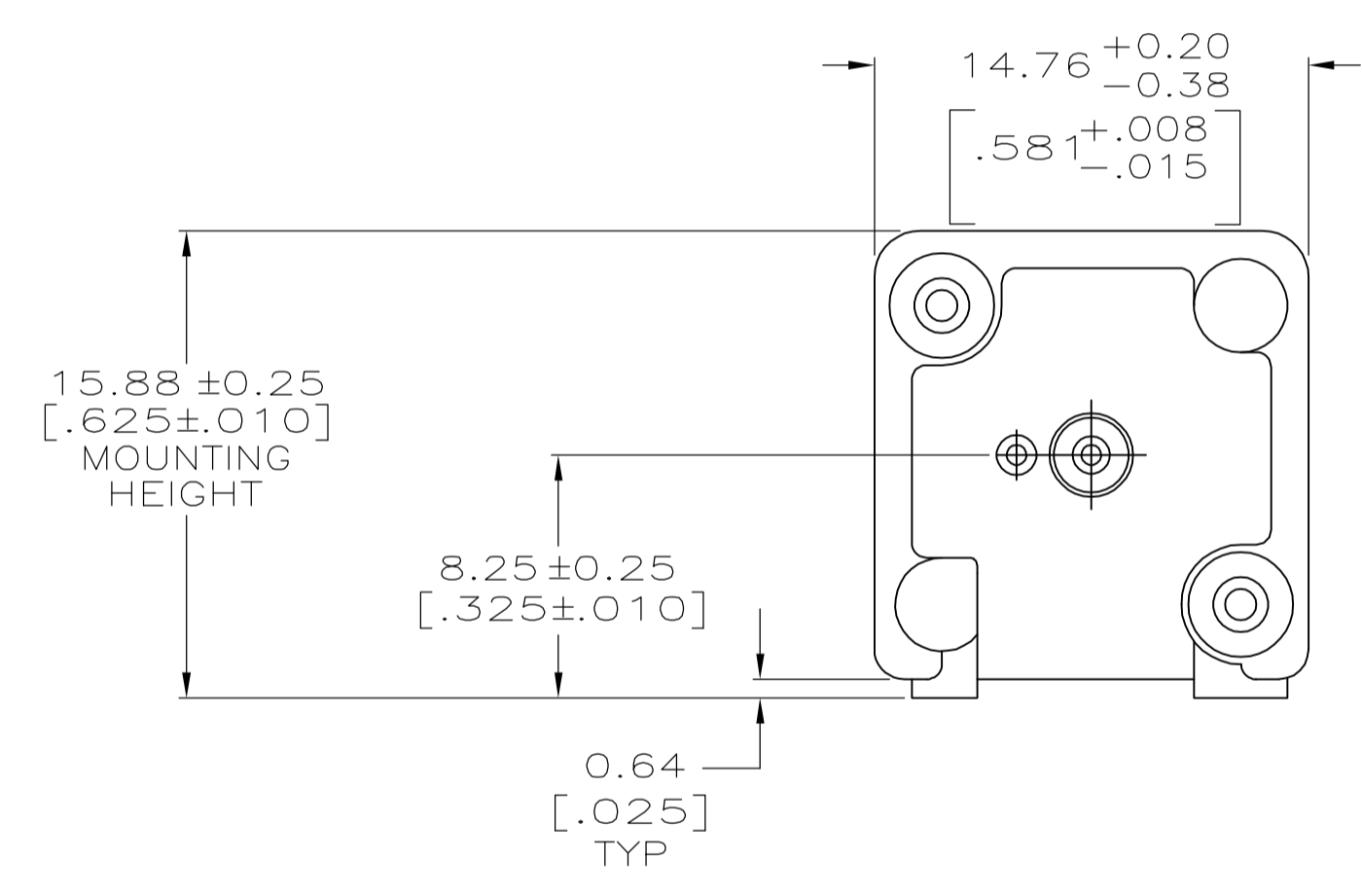


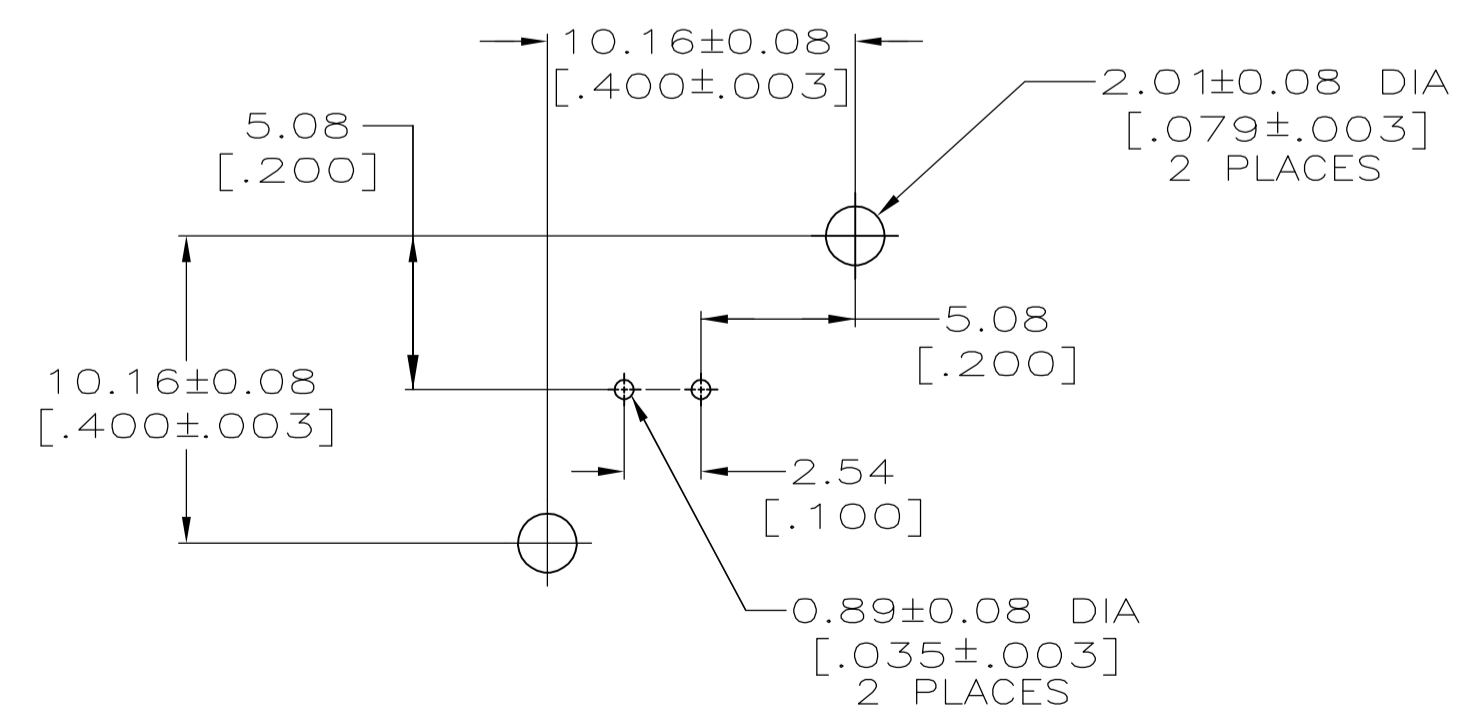
LOC		DIST		REVISIONS			
P	LTR	DESCRIPTION	DATE	BY	APVD		
D		PER EC 0514-0184-04	10JAN05	BM	JL		



- 1 ZINC PER QQ-Z-363.
- 2 POLYMETHYLPENTENE PER ASTM-D-1238.
- 3 PHOSPHOR BRONZE PER QQ-B-750.
- 4 BRASS PER ASTM-B-453.
- 5 BRASS PER ASTM-B-16.
- 6 NICKEL PLATE PER QQ-N-290, 3.81 μm [.000150] MINIMUM THICK.
- 7 TIN PLATE PER ASTM-B-545, 3.81 μm [.000150] MINIMUM THICK.
- 8 GOLD PLATE PER MIL-G-45204, 0.76 μm [.000030] MINIMUM THICK.
- 9. SEE INSTRUCTION SHEET 2769.



RECOMMENDED PANEL CUTOUT



PCB CONFIGURATION

227673-1
 PART NUMBER

THIS DRAWING IS A CONTROLLED DOCUMENT.		DIN J. LIPPERT 6-30-92		Tyco Electronics Corporation Harrisburg, PA 17105-3608	
DIMENSIONS: INCHES		CIK A. GABANY 7-2-92		NAME JACK, VERTICAL, PCB, 50 OHM, SERIES BNC	
TOLERANCES UNLESS OTHERWISE SPECIFIED:		APVD A. GABANY 7-2-92	PRODUCT SPEC 108-12078		
0 PLC ± - 1 PLC ± - 2 PLC ± 0.05 [.002] 3 PLC ± - 4 PLC ± - ANGLES ± -		APPLICATION SPEC		RESTRICTED TO	
MATERIAL SEE NOTES 1-5		WEIGHT		SCALE 4:1	
FINISH SEE NOTES 6-8		A1 00779 C=227673		SHEET 1 OF 1 REV D	
CUSTOMER DRAWING		SCALE 4:1		SHEET 1 OF 1 REV D	