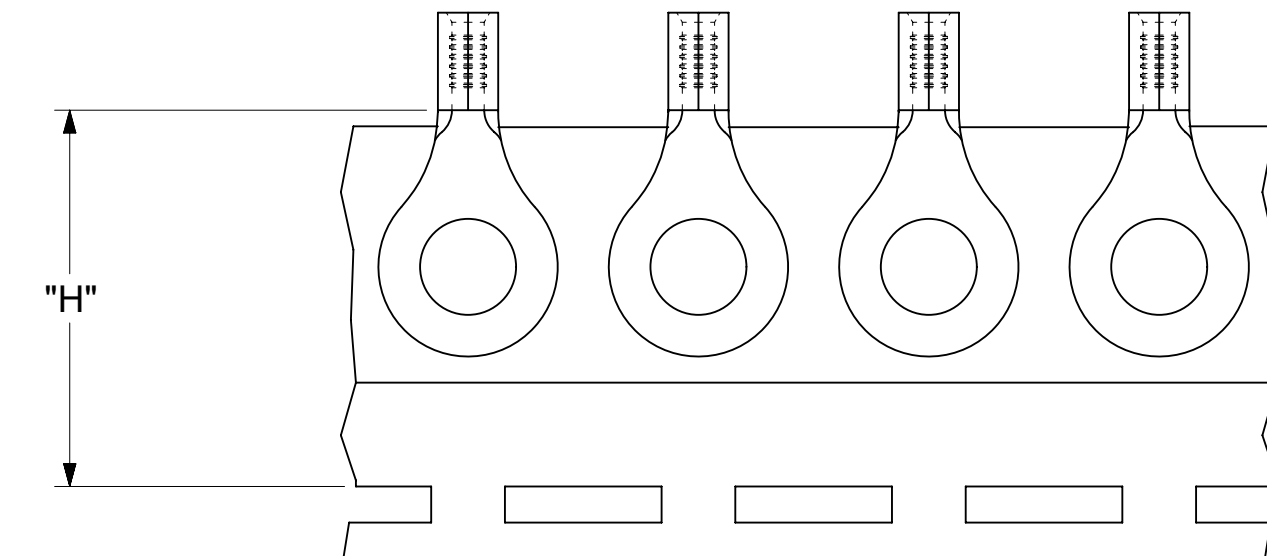
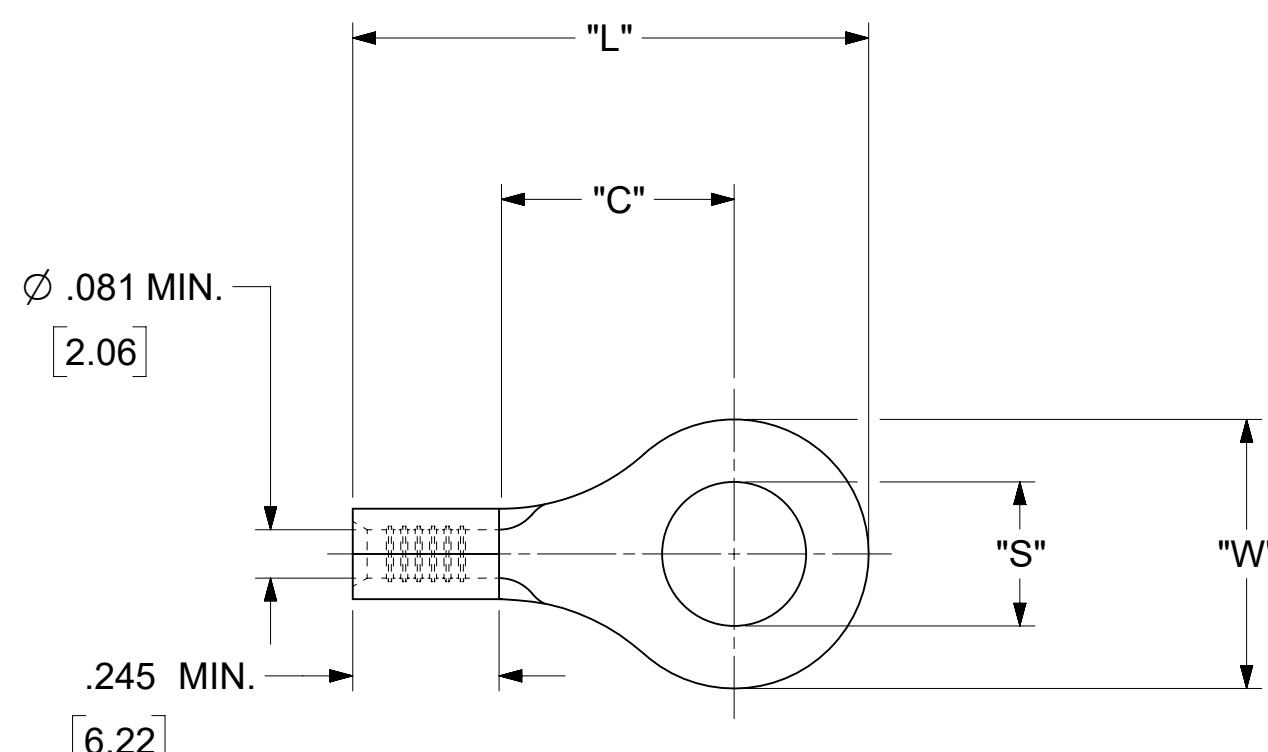


| LOOSE PIECE     |                    | TAPE MOUNTED    |                    | SPECIFICATIONS |                     |                     |              |               |               |
|-----------------|--------------------|-----------------|--------------------|----------------|---------------------|---------------------|--------------|---------------|---------------|
| MATERIAL NUMBER | ENGINEERING NUMBER | MATERIAL NUMBER | ENGINEERING NUMBER | STUD SIZE      | "S"<br>±.005 [0.13] | "W"<br>±.010 [0.25] | "C"<br>MIN.  | "L"<br>MAX.   | "H"           |
| 190440143       | B-118-10           | ---             | ---                | 10             | .198 [5.03]         | .534 [13.56]        | .554 [14.07] | 1.115 [28.32] | 1.172 [29.77] |
| 190440144       | B-118-14           | ---             | ---                | 14             | .265 [6.73]         |                     |              |               |               |
| 190440146       | B-118-38           | ---             | ---                | 38             | .390[9.91]          |                     |              |               |               |
| 190440148       | B-118-56           | ---             | ---                | 56             | .328 [8.33]         |                     |              |               |               |
| 190440150       | B-123-04           | ---             | ---                | 4              | .119 [3.02]         | .250 [6.35]         | .209 [5.31]  | .639 [16.23]  | .98 [24.89]   |
| 190440152       | B-123-06           | ---             | ---                | 6              | .146 [3.71]         |                     |              |               |               |
| 190440154       | B-123-08           | 190440155       | B-123-08T          | 8              | .173 [4.39]         |                     |              |               |               |
| 190440156       | B-125-10           | ---             | ---                | 10             | .198 [5.03]         | .467 [11.86]        | .388 [9.86]  | .916 [23.27]  | .98 [24.89]   |
| 190440158       | B-125-14           | 190440159       | B-125-14T          | 14             | .265 [6.73]         |                     |              |               |               |
| 190440160       | B-125-56           | ---             | ---                | 56             | .328 [8.33]         |                     |              |               |               |
| 190440028       | B-137-04           | ---             | ---                | 4              | .119 [3.02]         | .312 [7.92]         | .285 [7.24]  | .730 [18.54]  | .98 [24.89]   |
| 190440030       | B-137-06           | ---             | ---                | 6              | .146 [3.71]         |                     |              |               |               |
| 190440031       | B-137-08           | 190440176       | B-137-08T          | 6              | .173 [4.39]         |                     |              |               |               |
| 190440032       | B-137-10           | 190440177       | B-137-10T          | 10             | .198 [5.03]         |                     |              |               |               |
| 190440033       | B-139-04           | ---             | ---                | 4              | .119 [3.02]         | .342 [8.69]         | .310 [7.87]  | .775 [19.69]  | .98 [24.89]   |
| 190440035       | B-139-06           | ---             | ---                | 6              | .146 [3.71]         |                     |              |               |               |
| 190440037       | B-139-08           | ---             | ---                | 8              | .173 [4.39]         |                     |              |               |               |
| 190440039       | B-139-10           | ---             | ---                | 10             | .198 [5.03]         |                     |              |               |               |



PARTS ON TAPE

- NOTES:
1. MATERIAL: COPPER .031±.001 [0.79] THK.
  2. PLATING: ELECTRO-TIN (.0003 MIN).
  3. WIRE SIZE: 16-14 AWG  
1.0-2.5 MM<sup>2</sup>
  4. ALL DIMENSIONS IN INCHES/[MM].
  5. PARTS ARE ROHS COMPLIANT.
  6. DIMS. SHOWN ARE FOR REFERENCE ONLY.

|   |   |                        |         |   |  |  |  |                            |  |
|---|---|------------------------|---------|---|--|--|--|----------------------------|--|
| THIS DRAWING CONTAINS INFORMATION THAT IS PROPRIETARY TO MOLEX ELECTRONIC TECHNOLOGIES, LLC AND SHOULD NOT BE USED WITHOUT WRITTEN PERMISSION |   |                        |         |   |  |  |  |                            |  |
| DIMENSION UNITS<br><b>INCH/MM</b>   |   | SCALE<br><b>NTS</b>    |         | CURRENT REV DESC: OBSOLETE PART NUMBERS<br>AS PER PCN#512131. |  |  |  | <b>molex</b>               |  |
| GENERAL TOLERANCES (UNLESS SPECIFIED)   |   |                        |         | EC NO: 727779   |  | RING TONGUE TERMINAL<br>KRIMPTITE 100-SERIES |  |                            |  |
| 4 PLACES  | ± |                        | ±       | DRWN: ANIKES1   |  | 2022/09/29                                   |  | PRODUCT CUSTOMER DRAWING   |  |
| 3 PLACES  | ± |                        | ± 0.005 | CHK'D: GGA  |  | 2022/11/29                                   |  | DOCUMENT NUMBER            |  |
| 2 PLACES  | ± | 0.13                   | ± 0.01  | APPR: GGA   |  | 2022/11/29                                   |  | DOC TYPE DOC PART REVISION |  |
| 1 PLACE   | ± | 0.25                   | ±       | INITIAL REVISION:   |  |  |  | 190440143                  |  |
| 0 PLACES  | ± |                        | ±       | DRWN: JJ  |  | 1984/10/15                                   |  | PSD 000 A2                 |  |
| ANGULAR TOL ± 0.5 °   |   | THIRD ANGLE PROJECTION |         | APPR: JMACNEIL  |  | 2019/07/01                                   |  | MATERIAL NUMBER            |  |
| DRAFT WHERE APPLICABLE<br>MUST REMAIN<br>WITHIN DIMENSIONS  |   | DRAWING                |         | SERIES  |  | CUSTOMER                                     |  | SHEET NUMBER               |  |
|   |   | C-SIZE                 |         | 19044   |  | GENERAL MARKET                               |  | 1 OF 1                     |  |