

LOC		DIST		REVISIONS			
P	LTR	DESCRIPTION	DATE	DN	APPD		
A		INITIAL REVISION	120CT09	BM	ML		

Ausführung:
Werkmanship:

- Leichte Handhabung
- Gehäuse aus glasfaserverstärktem Kunststoff
- Housing made of glass fiber reinforced plastic material
- Farbe: schwarz
- Color: black
- Beanspruchte Teile gehärtet und vergütet
- stressed parts heat treated and tempered
- Griffhebel kunststoffbeschichtet
- plastic coated operating lever
- Farbe: schwarz (ähnl. RAL 9005)
- Colour: black (similar RAL 9005)

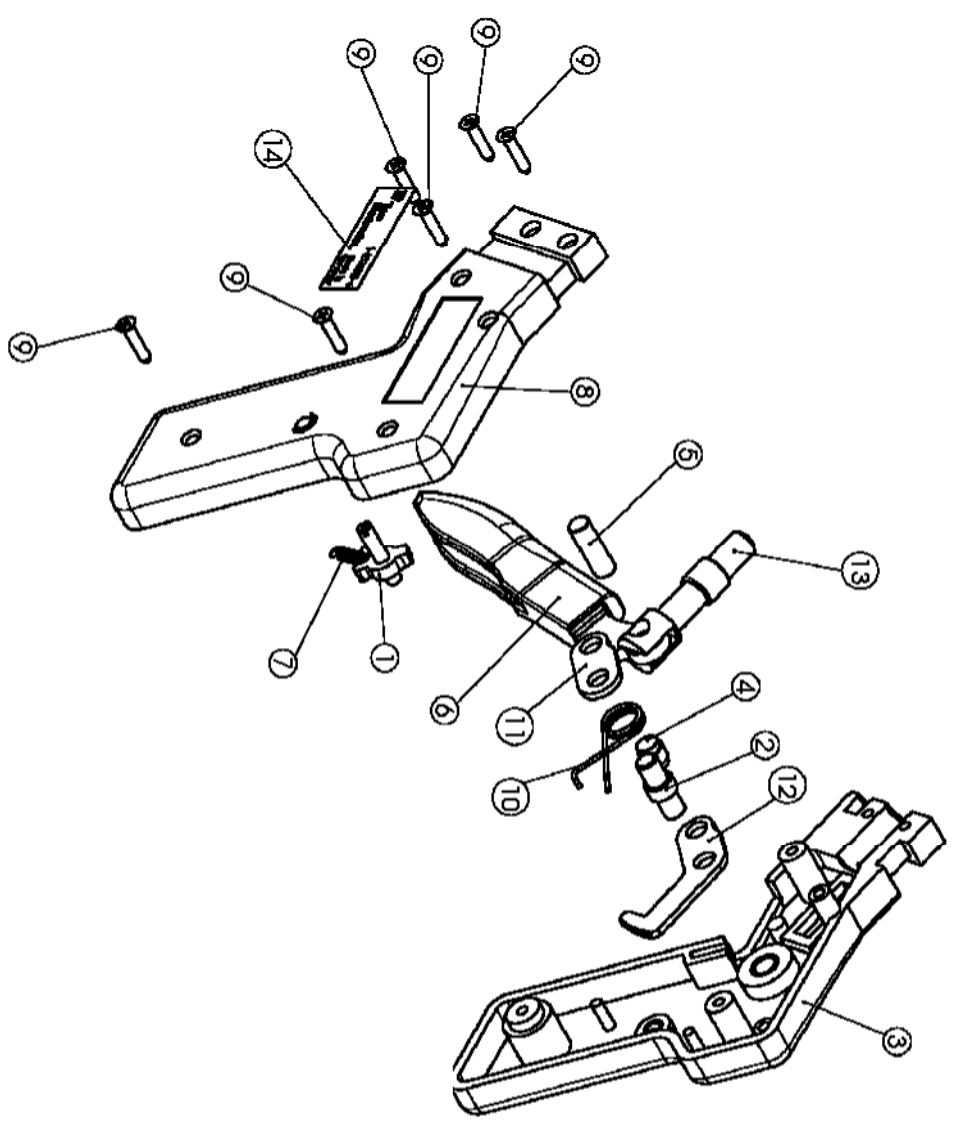
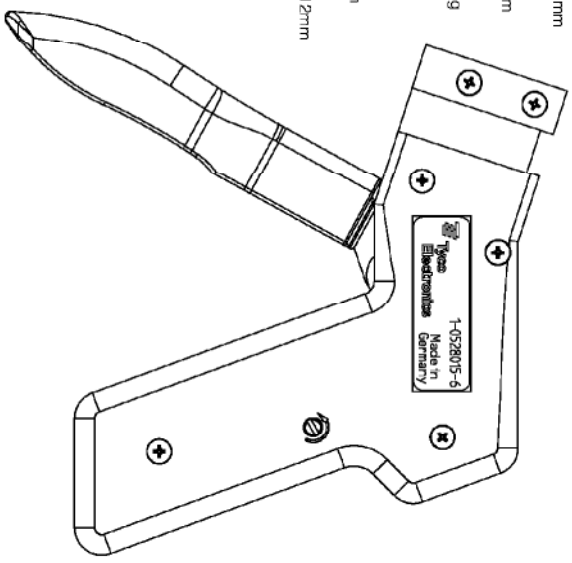
- Voll recycelbar:
- RohSt/Richtlinie: 2002/95/EG) konform
- Fully recyclable:
- RohSt/Directive: 2002/95/EC) compliant

Abmessungen:
Dimensionen:

- Länge: ca. 120 mm
- Length: approx. 110 mm
- Breite: ca. 24mm
- Width: approx. 24mm
- Gewicht: ca. 200 g
- Weight: approx. 200 g

Anwendungsbereich:
Application range:

- Wechselköpfe mit max. Hub von ca. 12mm
- Change heads with a max. stit of approx. 12mm



THIS DRAWING IS A CONTROLLED DOCUMENT.

DIMENSIONS		TOLERANCES UNLESS OTHERWISE SPECIFIED		DN		NAME		SIZE		CASE CODE		DRAWING NO		RESTRICTED TO	
mm		± -		B. MUTH		Tyco Electronics		A3		00779		1-528015-6		-	
0 PLC		± -		M L I P P		120CT2009		-		-		-		-	
1 PLC		± -		M L I P P		120CT2009		-		-		-		-	
2 PLC		± -		M L I P P		120CT2009		-		-		-		-	
3 PLC		± -		M L I P P		120CT2009		-		-		-		-	
4 PLC		± -		M L I P P		120CT2009		-		-		-		-	
5 PLC		± -		M L I P P		120CT2009		-		-		-		-	
FINISH		-		M L I P P		120CT2009		-		-		-		-	
MATERIAL		-		M L I P P		120CT2009		-		-		-		-	
WEIGHT		-		M L I P P		120CT2009		-		-		-		-	
APPLICATION SPEC		-		M L I P P		120CT2009		-		-		-		-	
PRODUCT SPEC		-		M L I P P		120CT2009		-		-		-		-	
CUSTOMER DRAWING		-		M L I P P		120CT2009		-		-		-		-	

