

SIM-EI- 24DC/TTL/100


Order No.: 2271154

The illustration shows version SIM-EI- 5DC/TTL/100



<http://eshop.phoenixcontact.de/phoenix/treeViewClick.do?UID=2271154>

Input optocoupler, with protection circuits in input and output circuits, input: 24 V DC, output: TTL logic level, max. 100 mA

Commercial data	
GTIN (EAN)	 4 017918 054199
sales group	G150
Pack	10 pcs.
Customs tariff	85364190
Catalog page information	Page 309 (IF-2009)

Product notes

WEEE/RoHS-compliant since:
06/04/2007



<http://www.download.phoenixcontact.com>
Please note that the data given here has been taken from the online catalog. For comprehensive information and data, please refer to the user documentation. The General Terms and Conditions of Use apply to Internet downloads.

Technical data

Input data	
Nominal input voltage U_N	24 V AC $\pm 10\%$
Input voltage range in reference to U_N	0.9 ... 1.1
Switching threshold "0" signal in reference to U_N	≤ 0.4
Switching threshold "1" signal in reference to U_N	≥ 0.8

Typical input current at U_N	5.1 mA
Type of protection	Protection against polarity reversal
Protective circuit/component	Polarity protection diode
Transmission frequency	4000 Hz

Output data

Output nominal voltage range	3 V DC ... 5.25 V DC
Limiting continuous current	100 mA
Fan out	1
Voltage drop at max. limiting continuous current	0.3 V
Output circuit	3-conductor, ground-referenced
Type of protection	Protection against polarity reversal
	Free running
Protective circuit/component	Polarity protection diode
	Damping diode
Output resistor	Approx. 390 Ω

General data

Width	13 mm
Height	29 mm
Depth	25 mm
Ambient temperature (operation)	-20 °C ... 50 °C
Ambient temperature (storage/transport)	-20 °C ... 70 °C
Mounting position	Any
Assembly instructions	Can be aligned with 2 mm spacing
Standards/regulations	DIN VDE 0110

Certificates / Approvals

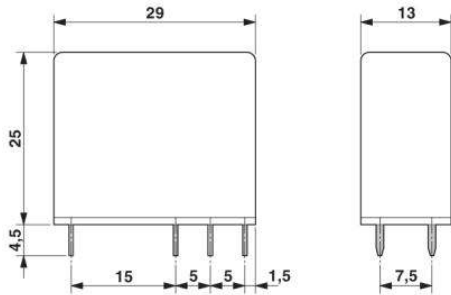


Certification

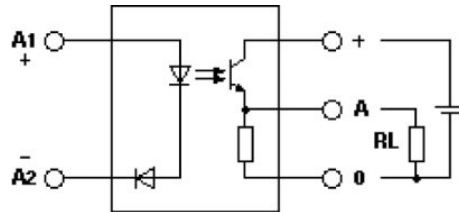
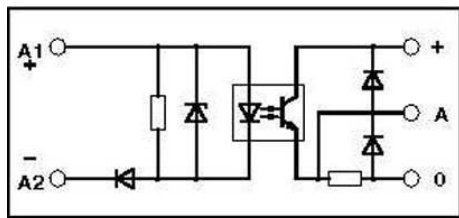
GOST

Diagrams/Drawings

Dimensioned drawing



Circuit diagram



Schematic diagram



SIM-EI- 24DC/TTL/100 Order No.: 2271154

<http://eshop.phoenixcontact.de/phoenix/treeViewClick.do?UID=2271154>

Address

PHOENIX CONTACT Deutschland GmbH
Flachmarktstr. 8
32825 Blomberg, Germany
Phone +49 5235 3 12000
Fax +49 5235 3 41200
<http://www.phoenixcontact.de>



© 2011 Phoenix Contact
Technical modifications reserved;