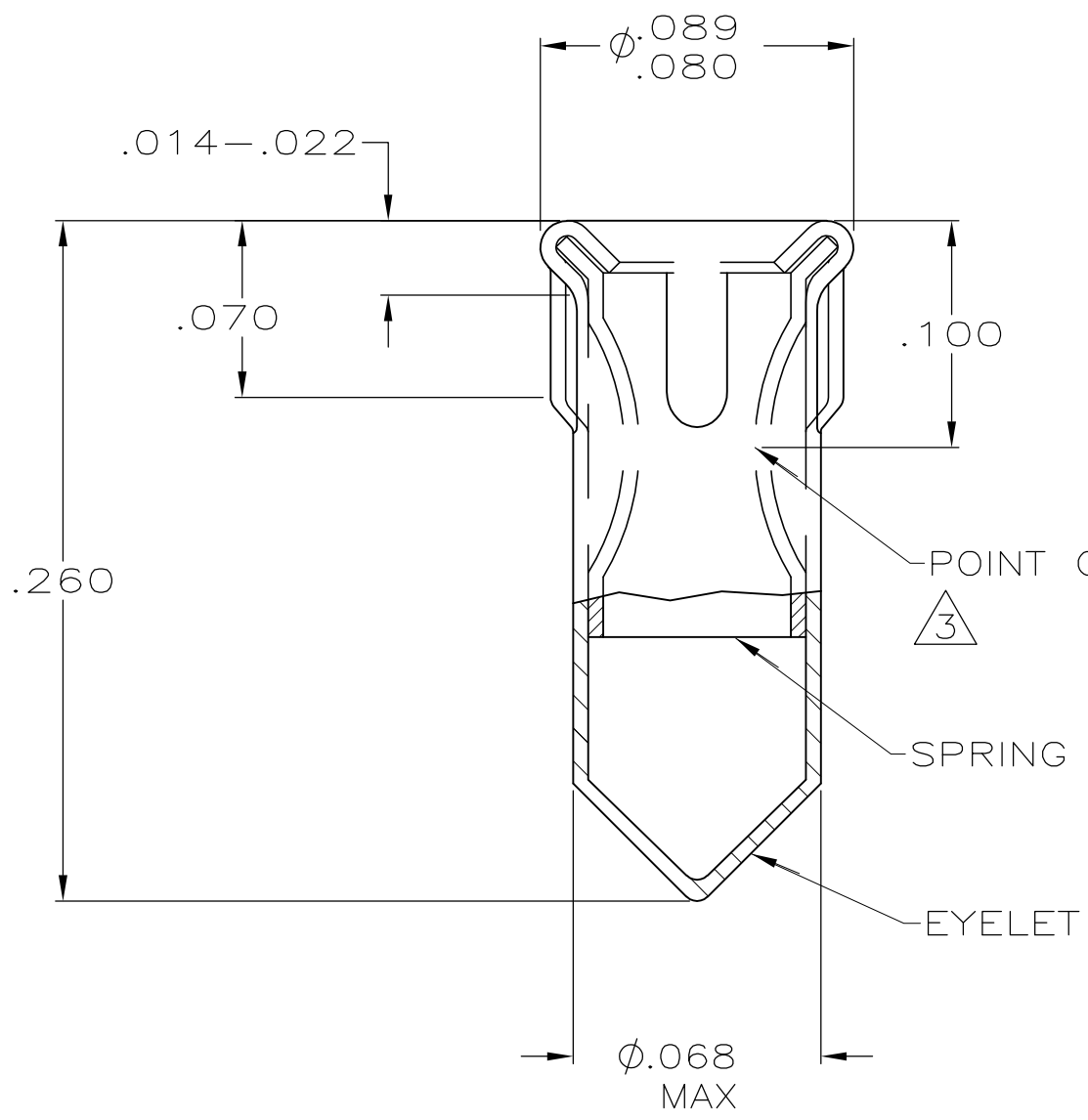
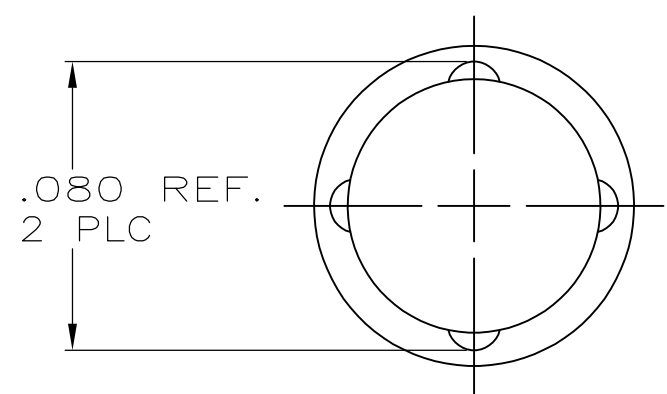


THIS DRAWING IS UNPUBLISHED. RELEASED FOR PUBLICATION
 © COPYRIGHT BY TYCO ELECTRONICS CORPORATION. ALL INTERNATIONAL RIGHTS RESERVED.

LOC	DIST	REVISIONS					
AG	53	P	LTR	DESCRIPTION	DATE	DWN	APVD
		E		REVISED PER ECO-09-026264	25MAR2010	HMR	DB



- MATERIAL: EYELET-COPPER (QQ-C-533)
 SPRING-BERYLLIUM COPPER (QQ-C-576).
- TIN PL. .000150 MIN THK
- NICKEL UNDERPLATE ALL OVER, MATING SURFACE PLATED TO MEET PERFORMANCE REQUIREMENTS OF TYCO PRODUCT SPECIFICATION 108-14008.
- RECOMMENDED HOLE SIZE FOR MACHINE INSERTION .069-.075
- TIN PLATE .000100 MIN THK
- TIN-LEAD PLATE .000150 MIN THK



	.037-.041	.100-.210	3	6	645500-3
	.037-.041		NOTE 5		645500-2
OBSOLETE	.037-.041	.100-.210	NOTE 3	NOTE 2	645500-1
	DIA	LENGTH	SPRING	EYELET	PART NUMBER
	PIN		FINISH		

THIS DRAWING IS A CONTROLLED DOCUMENT.		DWN L.A. McEACHIN 24-JUN-99	Tyco Electronics Corporation Harrisburg, PA 17105-3608		
DIMENSIONS: INCHES		CHK G.S. RIDGILL 19-JUL-99	NAME SOCKET, MSS, SERIES 4		
TOLERANCES UNLESS OTHERWISE SPECIFIED:		APVD G.S. RIDGILL 19-JUL-99	PRODUCT SPEC		
0 PLC ± -		APPLICATION SPEC			
1 PLC ± -		SIZE A3			
2 PLC ± -		CAGE CODE 00779			
3 PLC ± .010		DRAWING NO C-645500			
4 PLC ± -		RESTRICTED TO			
ANGLES ± -		SCALE NTS			
MATERIAL -		SHEET 1 OF 1			
FINISH SEE TABLE		REV E			
CUSTOMER DRAWING					