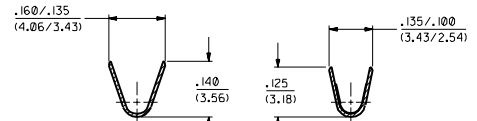
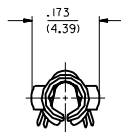


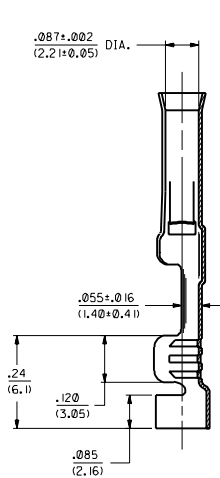
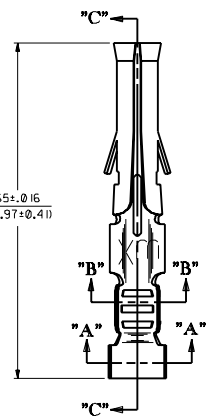
PART NO.	ENG. NO.
02-09-1122	2273-A(P90 I)
02-09-1123	2273-A(P90 IL)
-	-
-	-
-	-
-	-
-	-
-	-



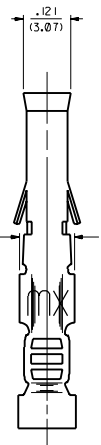
SECTION "A-A"

SECTION "B-B"

LEGEND
 2273-A(****)*
 * - FORM BLANK-CHAIN L-LOOSE
 ** - FINISH CODE
 P-PREPLATE BLANK-POSTPLATE



SECTION "C-C"

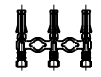


- NOTES:
1. TERMINAL FOR USE WITH .093/(2.36) SERIES HOUSINGS AND WILL ACCEPT 18 THRU 22 AWG WIRE.
 2. INSERTION FORCE: 2.0 LBS. AVG. WHEN TERMINAL IS INSERTED INTO AN .093 SERIES HOUSING.
 3. CONTACT RETENTION: 20 LBS. MIN.
 4. THIS PART CONFORMS TO PRODUCT SPEC. 02-09.

MATERIAL NOTES:
 1. CARTRIDGE BRASS, ALLOY *C26000
 .008/(0.20) THICK, SPRING TEMPER

FINISH CODES:
 901 HOT TIN DIP .000020/(0.0005) MIN.

CHAIN FORM
 FULL SCALE



DIMENSIONS SHOWN METRIC INCH		MFG. SH. REV. L.T.R. REVISIONS	
TITLE		REVISIONS	
CRIMP TERM., FEMALE .093/(2.36) DIA. FOR 18 THRU 22 AWG WIRE		REVISE PER EER US 0799 C/C 2/10/94 RW	
MOLDEX INCORPORATED		FINAL RELEASE ECP 11/975 C/C 4/5/91 RW	
PART NO. SD-2273-1		REV. NO. 101 1 4/5/91	
SEE CHART		SD-2273-A	
SCALE 6 : 1		DRAWN BY CWF	
CHECKED BY RW		DATE 10/1/91	
APPROVED BY GWF		MOLDEX INC. THIS DRAWING SHOULD NOT BE USED WITHOUT WRITTEN PERMISSION.	