

A

B

C

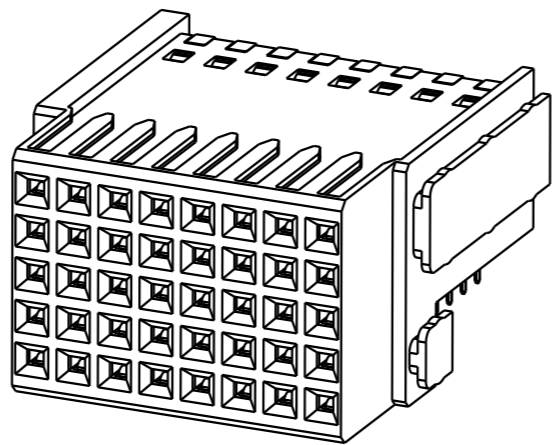
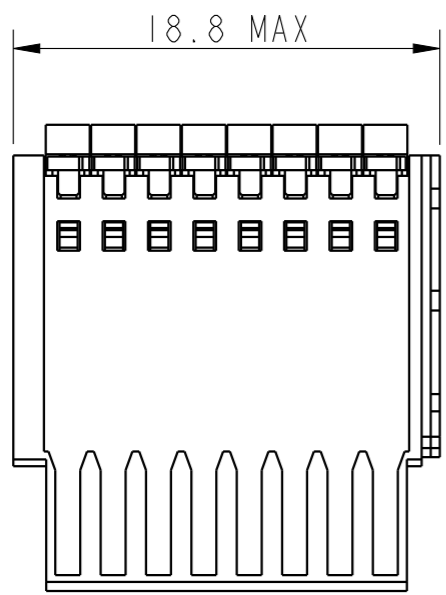
D

A

B

C

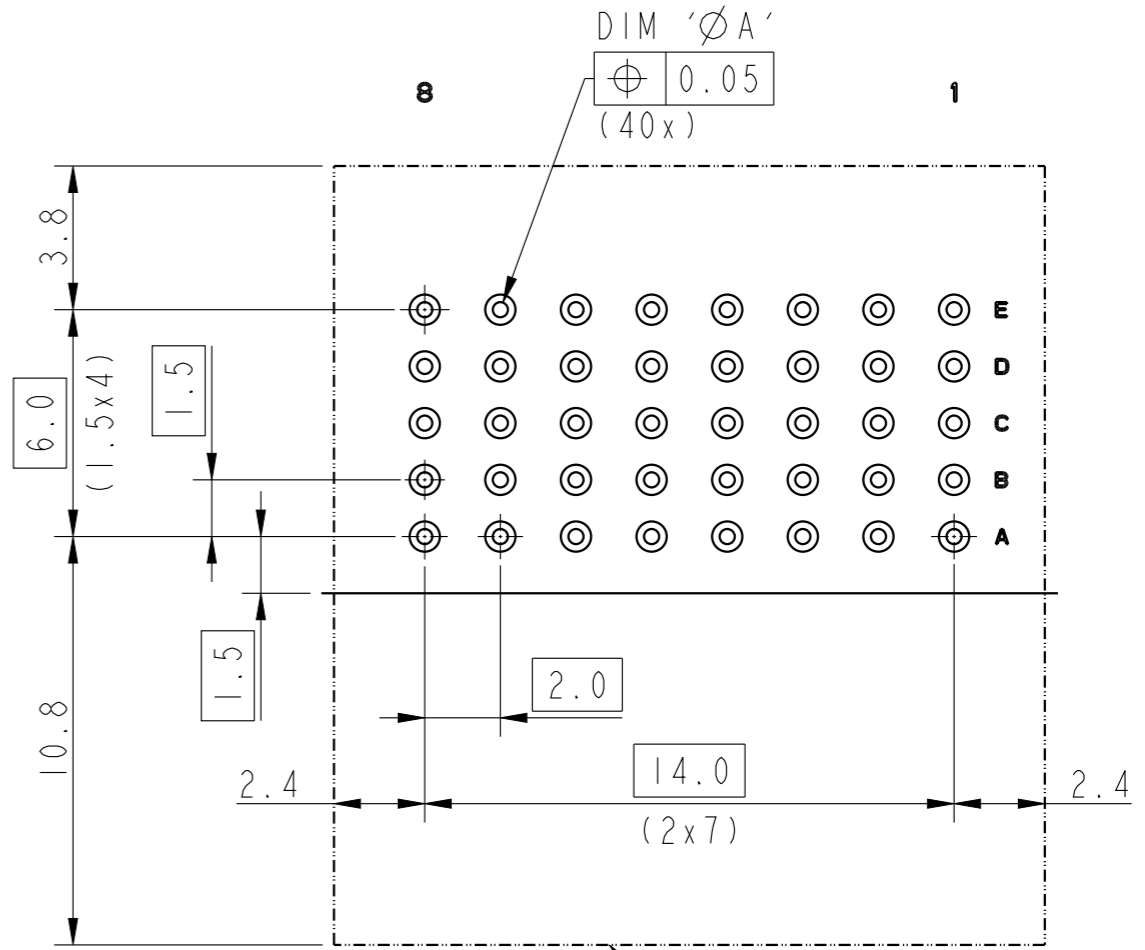
D



10164741-x0xLF

LOADING PATTERN (SEE PAGE-2)

PLATING CODE (9-GXT)



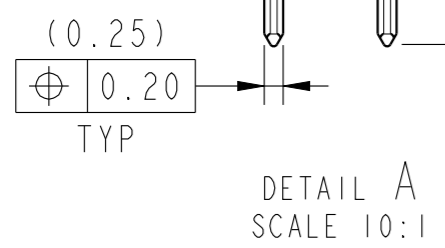
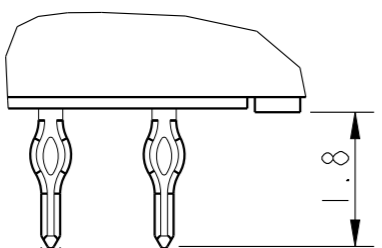
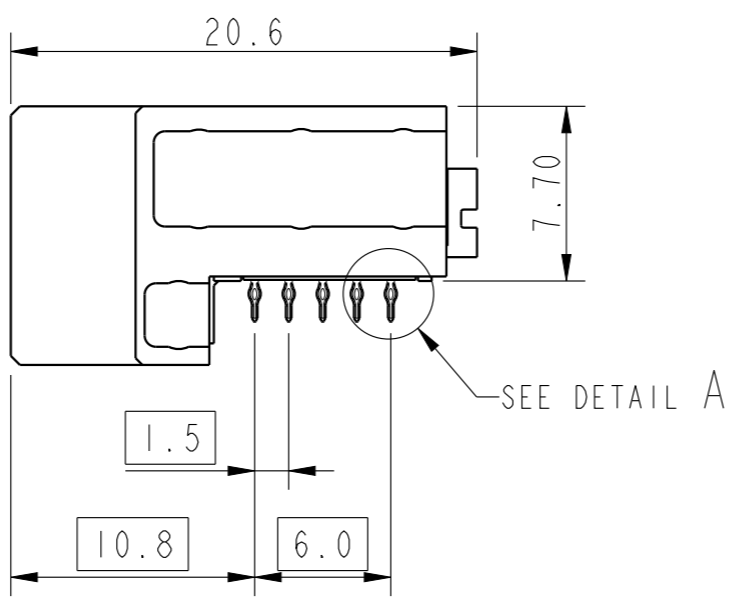
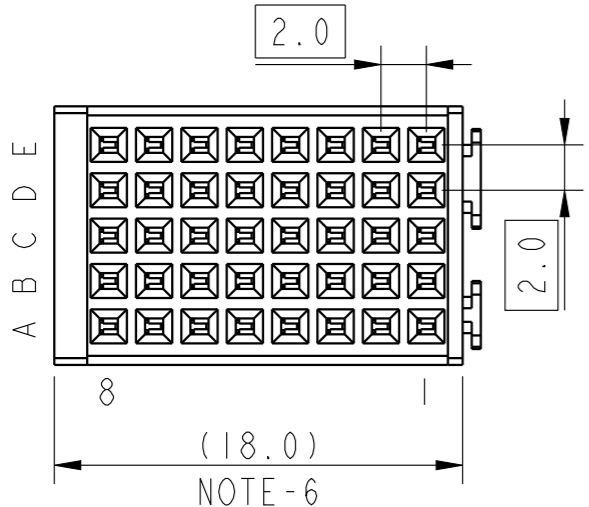
CONNECTOR SPACING

RECOMMENDED PLATED THROUGH HOLE DIMENSIONS

DIM	FINISHED HOLE DIA	Cu. THICKNESS	Sn THICKNESS	DRILLED HOLE DIA	LAND DIA
A	0.35-0.45	0.02-0.05	0.0008-0.0012	0.45-0.49	0.80

NOTES:

- MATERIALS
 - HOUSING & IMLA'S : THERMOPLASTIC (UL94 V-0)
 - CONTACT : COPPER ALLOY
- FINISH
 - CONTACT AREA : GXT OVER Ni
 - TERMINAL AREA : Sn OVER Ni
- MATES WITH IEC 61076-4-101 SERIES 2MM HM HEADERS WITH CONTACT MATING LEVEL 1 & 2 IN SIGNAL ROWS.
- MOUNTING STYLE : PRESS FIT, FLAT ROCK INSERTION.
- MINIMUM PCB THICKNESS : 1.40 MM
- PITCH FOR SCALING



spec ref	dr	Aswin T-S	2023/02/17	projection	MM	size	A3	scale	3:1
tolerance std	eng	Aswin T-S	2023/02/20			ecn no	rel level	Released	rev
ISO 406 ISO 1101	chr	-	-						
surface	linear	0.X	±0.3	product family	MILLIPACS	rel level	Released	dwg no	10164741
		0.XX	±0.20						
ISO 1302	angular	0°	±3°	cat. no.	10164741-xxxLF	Product - Customer Drw	sheet 1 of 2		

10164741-x01LF								
0	0	0	0	0	0	0	0	
HS	G	HS	G	HS	G	HS	G	
HS	G	HS	G	HS	G	HS	G	
G	G	G	G	G	G	G	G	
HS	G	HS	G	HS	G	HS	G	
HS	G	HS	G	HS	G	HS	G	
0	0	0	0	0	0	0	0	
01							08	

10164741-x04LF								
0	0	0	0	0	0	0	0	
LS	LS	LS	LS	LS	LS	LS	LS	
LS	LS	LS	LS	LS	LS	LS	LS	
LS	LS	LS	LS	LS	LS	LS	LS	
LS	LS	LS	LS	LS	LS	LS	LS	
LS	LS	LS	LS	LS	LS	LS	LS	
0	0	0	0	0	0	0	0	
01							08	

10164741-x02LF								
0	0	0	0	0	0	0	0	
HS	G	HS	G	HS	G	HS	G	
HS	G	HS	G	HS	G	HS	G	
LS	G	LS	G	LS	G	LS	G	
HS	G	HS	G	HS	G	HS	G	
HS	G	HS	G	HS	G	HS	G	
0	0	0	0	0	0	0	0	
01							08	

10164741-x03LF								
0	0	0	0	0	0	0	0	
HS	LS	HS	LS	HS	LS	HS	LS	
HS	LS	HS	LS	HS	LS	HS	LS	
LS	LS	LS	LS	LS	LS	LS	LS	
HS	LS	HS	LS	HS	LS	HS	LS	
HS	LS	HS	LS	HS	LS	HS	LS	
0	0	0	0	0	0	0	0	
01							08	

HS	HIGH SPEED SIGNAL
LS	LOW SPEED SIGNAL
G	GROUND
0	EMPTY

spec ref	dr	Aswin T-S	2023/02/17	projection	MM	size	A3	scale	3:1		
tolerance std	eng	Aswin T-S	2023/02/20		←→	ecn no		rel level			
ISO 406 ISO 1101	chr	-	-					Released			
surface	linear	ISO 1302	0.X	±0.3	Amphenol FCi	product family		MILLIPACS			
			0.XX	±0.20		MILLIPACS RA RECEPTACLE TYPE B8 SCALABLE		dwg no	10164741	rev	A
			0.XXX	±0.15		VERTICAL PINNING_NON-SHIELDED					
	angular		0°	±3°	cat. no.	10164741-xxxLF		Product - Customer Drw			
						sheet 2 of 2					