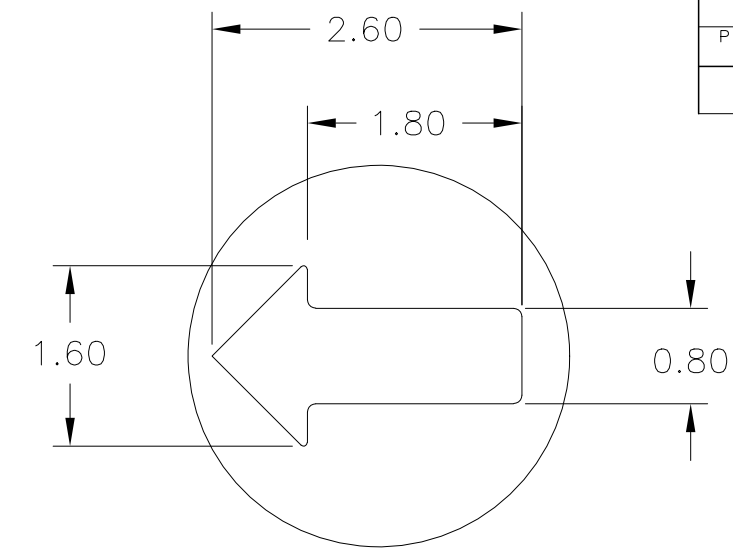
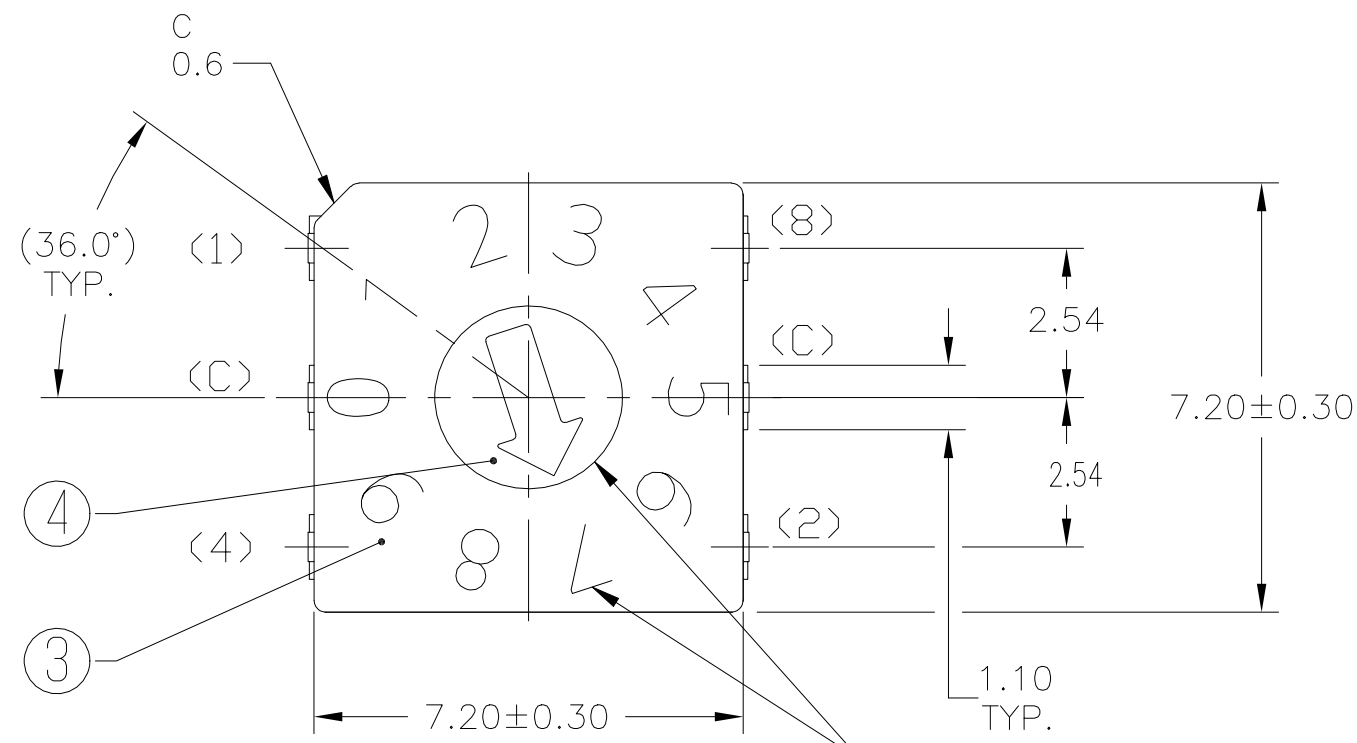
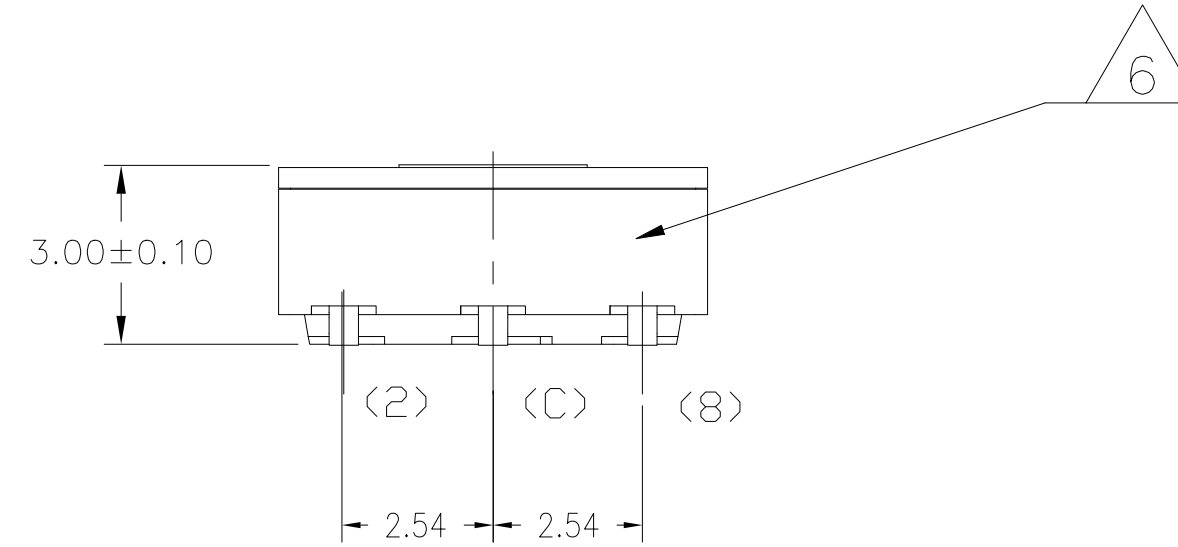
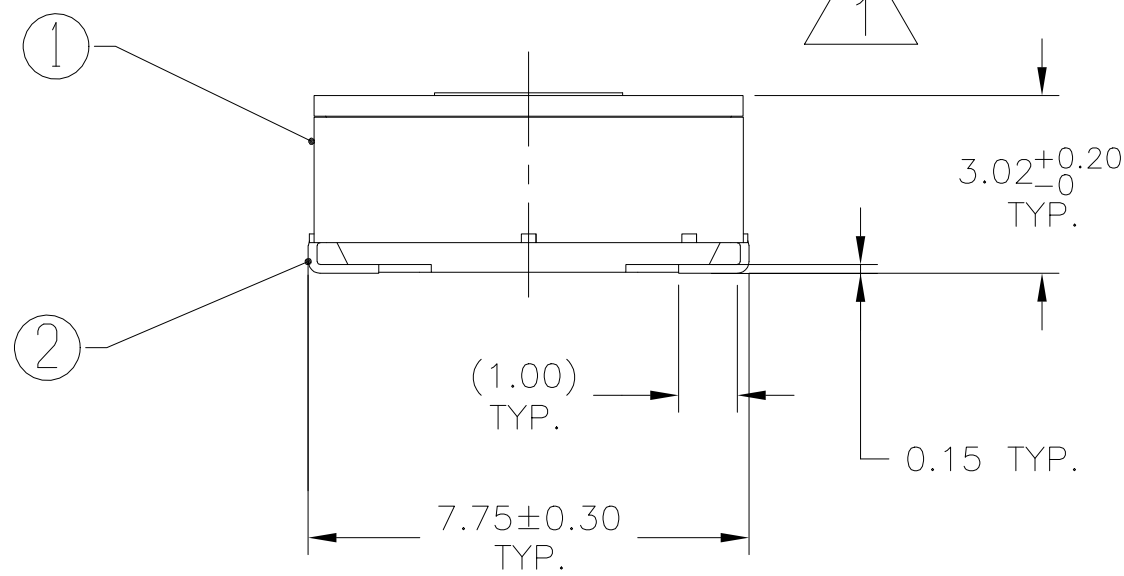


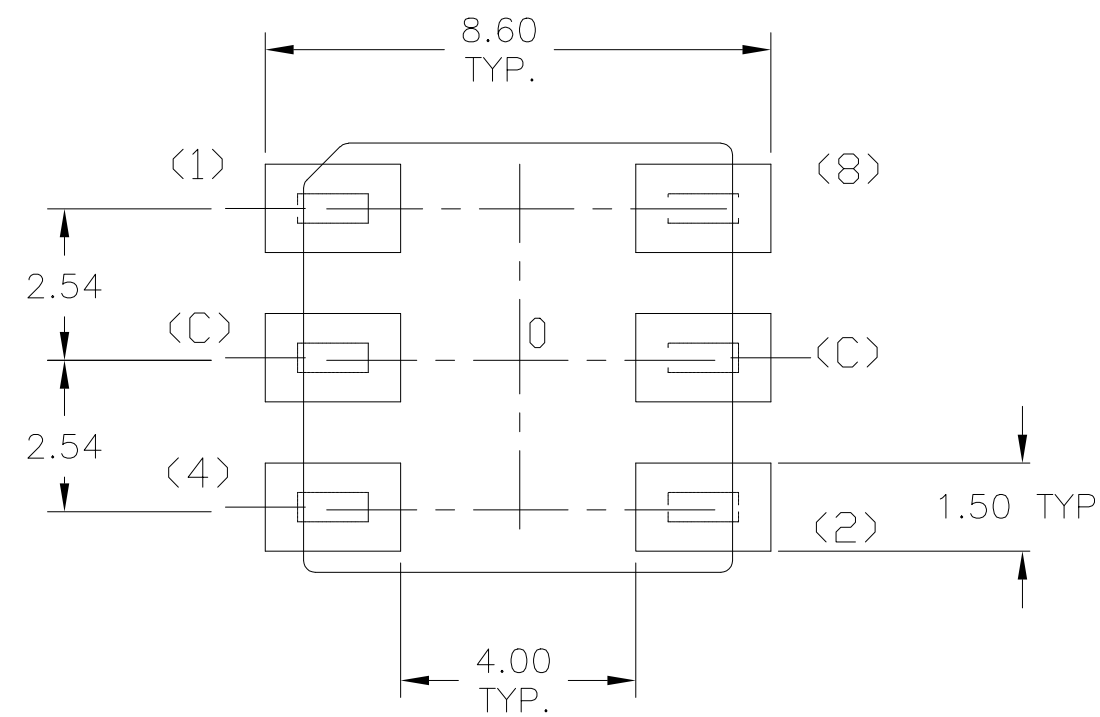
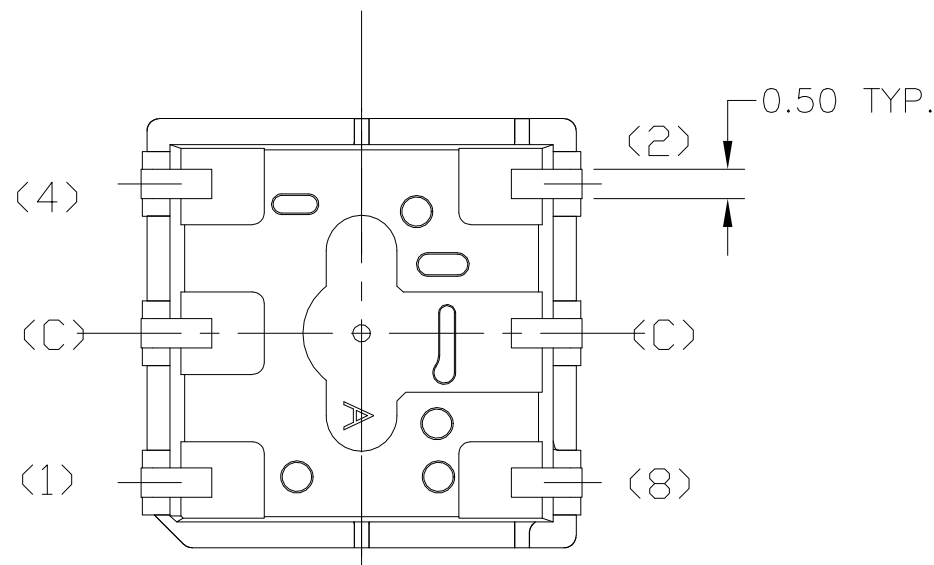
REVISIONS				
P	LTR	DESCRIPTION	DATE	APVD
1		NEW DRAWING	19JUL2022	GSK AS



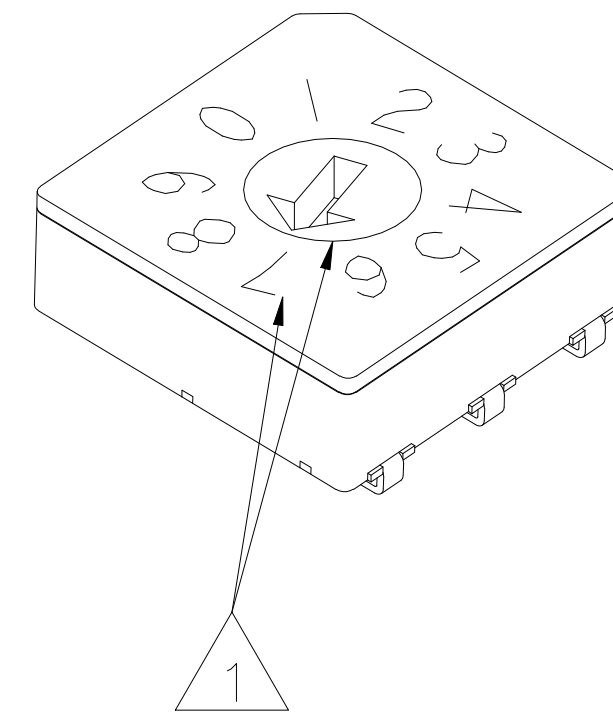
SEE SHEET 12 FOR CODE IDENTIFIER



CODE BINARY  
 (COMPLEMENT/GRAY/REAL)  
 J-LEAD TERMINALS  
 COVER COLOR GRAY  
 LASER MARKING  
 10 POSITION



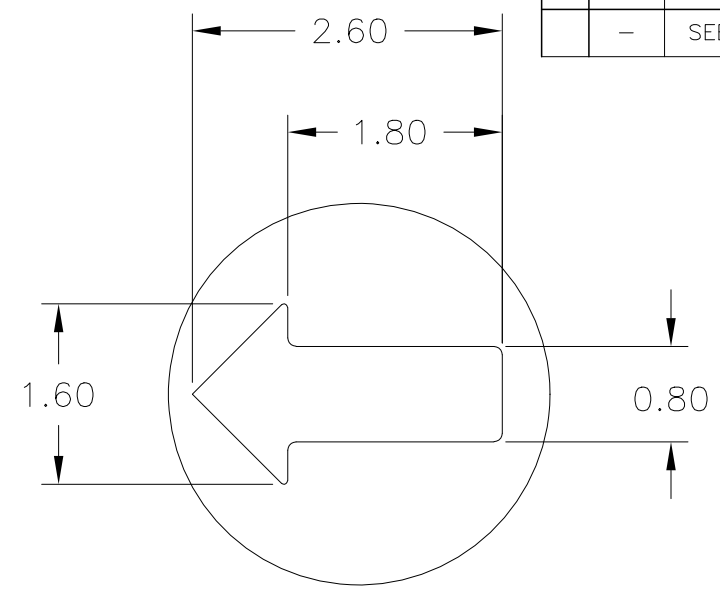
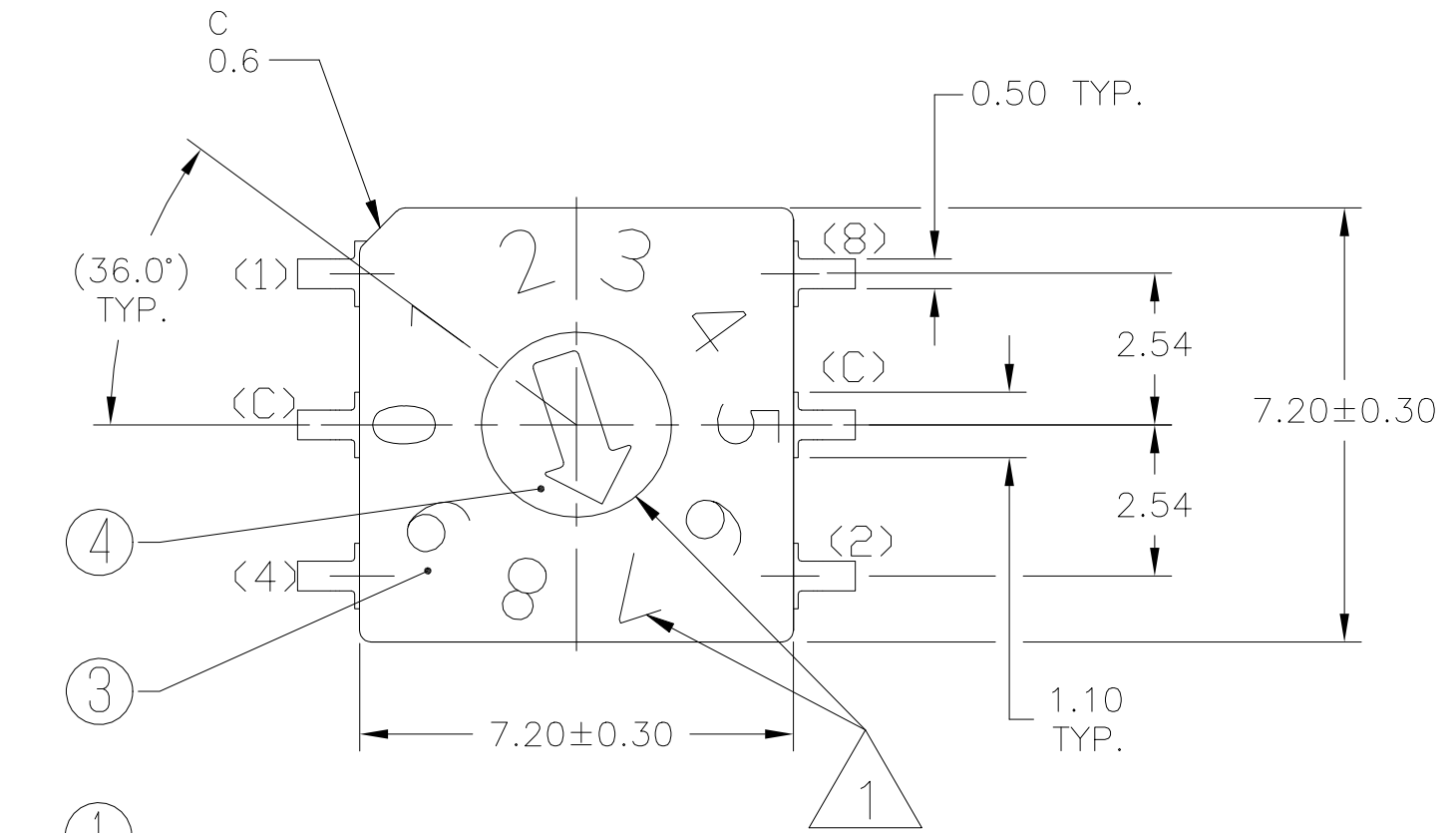
PCB Layout



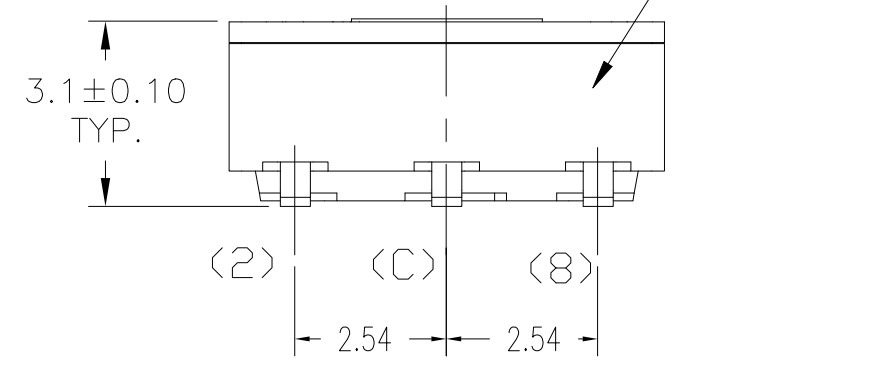
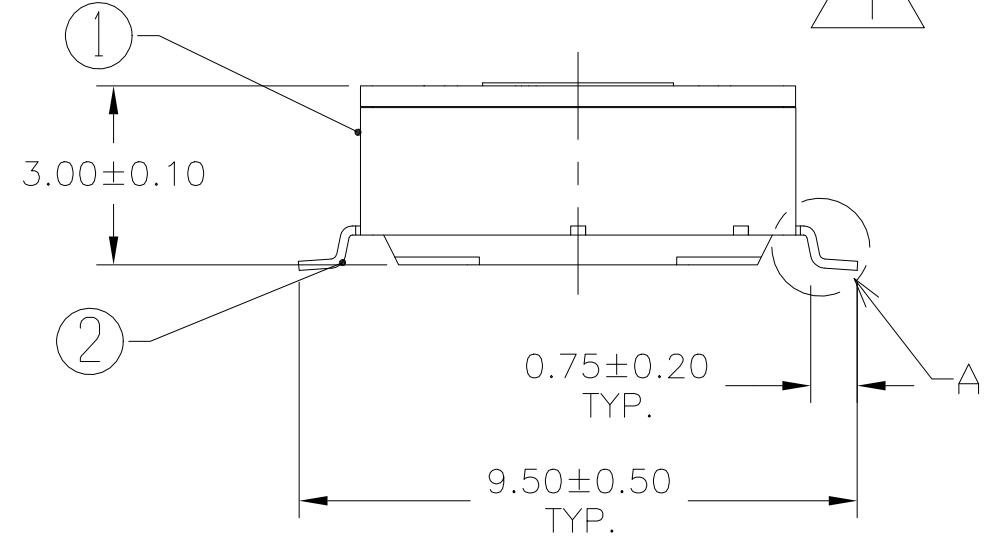
**PRELIMINARY**

THIS DRAWING IS A CONTROLLED DOCUMENT.		DWN 19JUL2022 SATHISH KUMAR_G	<b>TE</b> TE Connectivity																
DIMENSIONS: mm		CHK 19JUL2022 ALEXANDER, SHARPE																	
TOLERANCES UNLESS OTHERWISE SPECIFIED: ±0.15		APVD 19JUL2022 ALEXANDER, SHARPE	NAME MRSS, MINIATURE ROTARY SWITCH SERIES, VERTICAL, 2.54 GRAY, LASER MARKING																
<table border="1"> <tr><td>0 PLC</td><td>±</td><td>-</td></tr> <tr><td>1 PLC</td><td>±</td><td>-</td></tr> <tr><td>2 PLC</td><td>±</td><td>-</td></tr> <tr><td>3 PLC</td><td>±</td><td>-</td></tr> <tr><td>4 PLC</td><td>±</td><td>-</td></tr> </table>		0 PLC	±	-	1 PLC	±	-	2 PLC	±	-	3 PLC	±	-	4 PLC	±	-	PRODUCT SPEC	SIZE	CAGE CODE
0 PLC	±	-																	
1 PLC	±	-																	
2 PLC	±	-																	
3 PLC	±	-																	
4 PLC	±	-																	
MATERIAL		APPLICATION SPEC	A2	00779															
FINISH		WEIGHT	DRAWING NO C=2396233																
		CUSTOMER DRAWING	SCALE	SHEET															
			8:1	1 OF 12															
				REV 1															

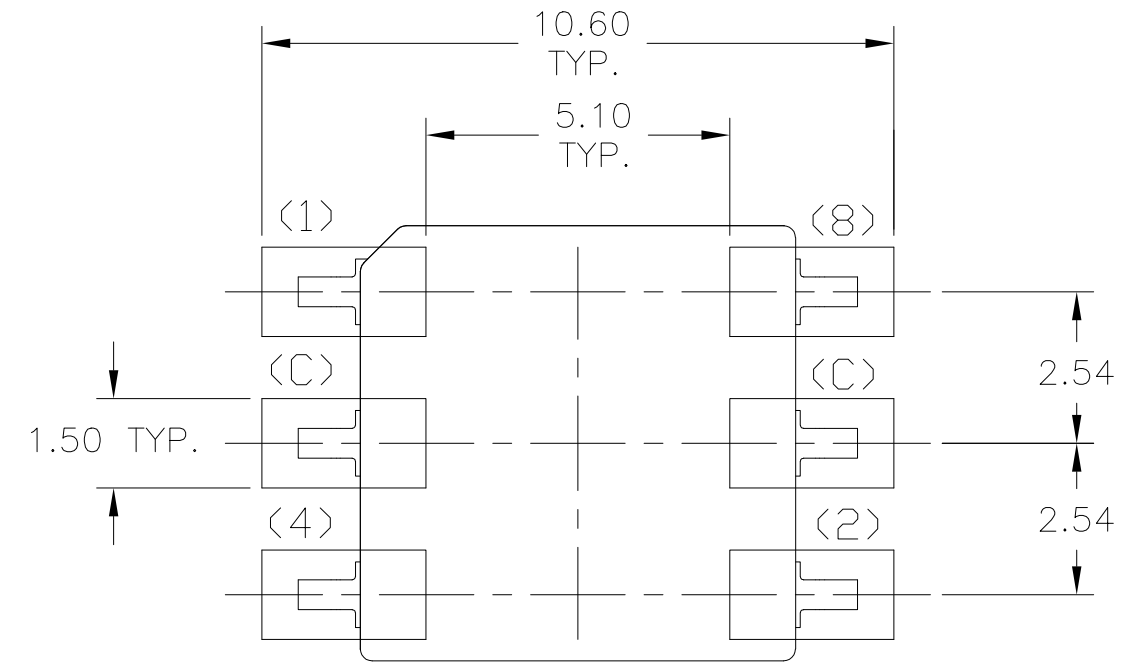
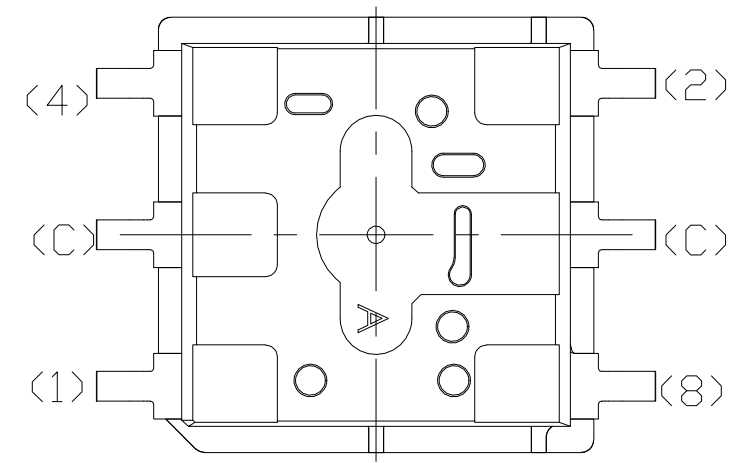
REVISIONS					
P	LTR	DESCRIPTION	DATE	DWN	APVD
-	-	SEE SHEET 1	-	-	-



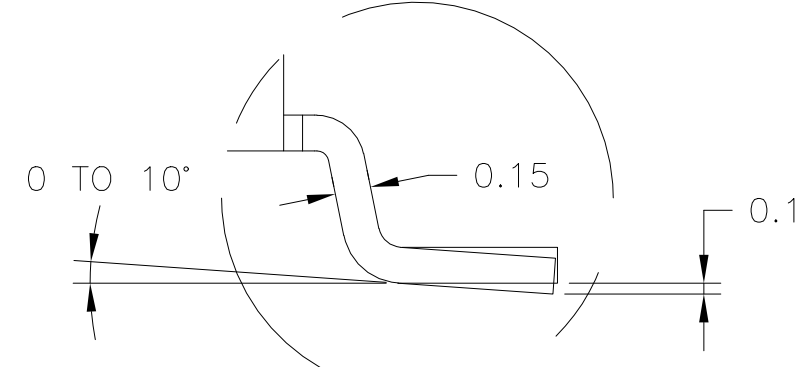
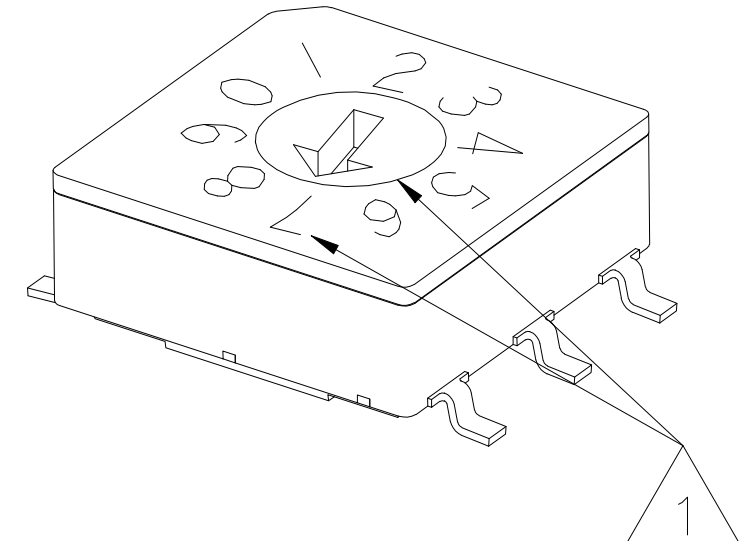
SEE SHEET 12 FOR CODE IDENTIFIER



CODE BINARY  
 (COMPLEMENT/GRAY/REAL)  
 GULLWING TERMINALS  
 COVER COLOR GRAY  
 LASER MARKING  
 10 POSITIONS



PCB Layout

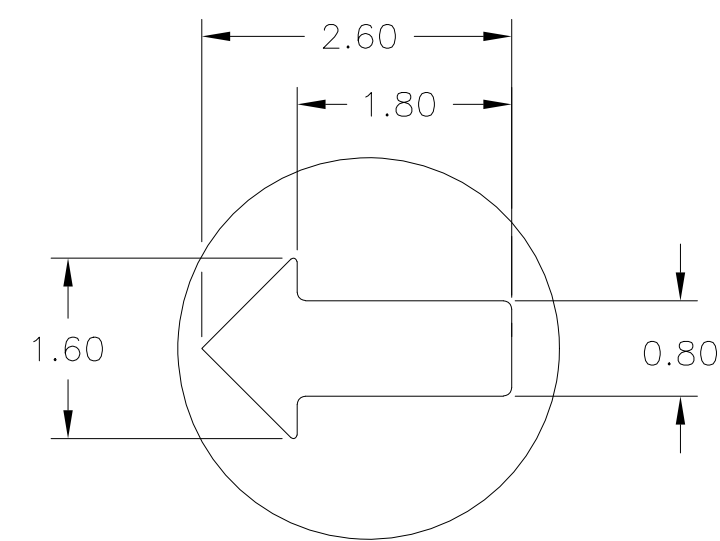
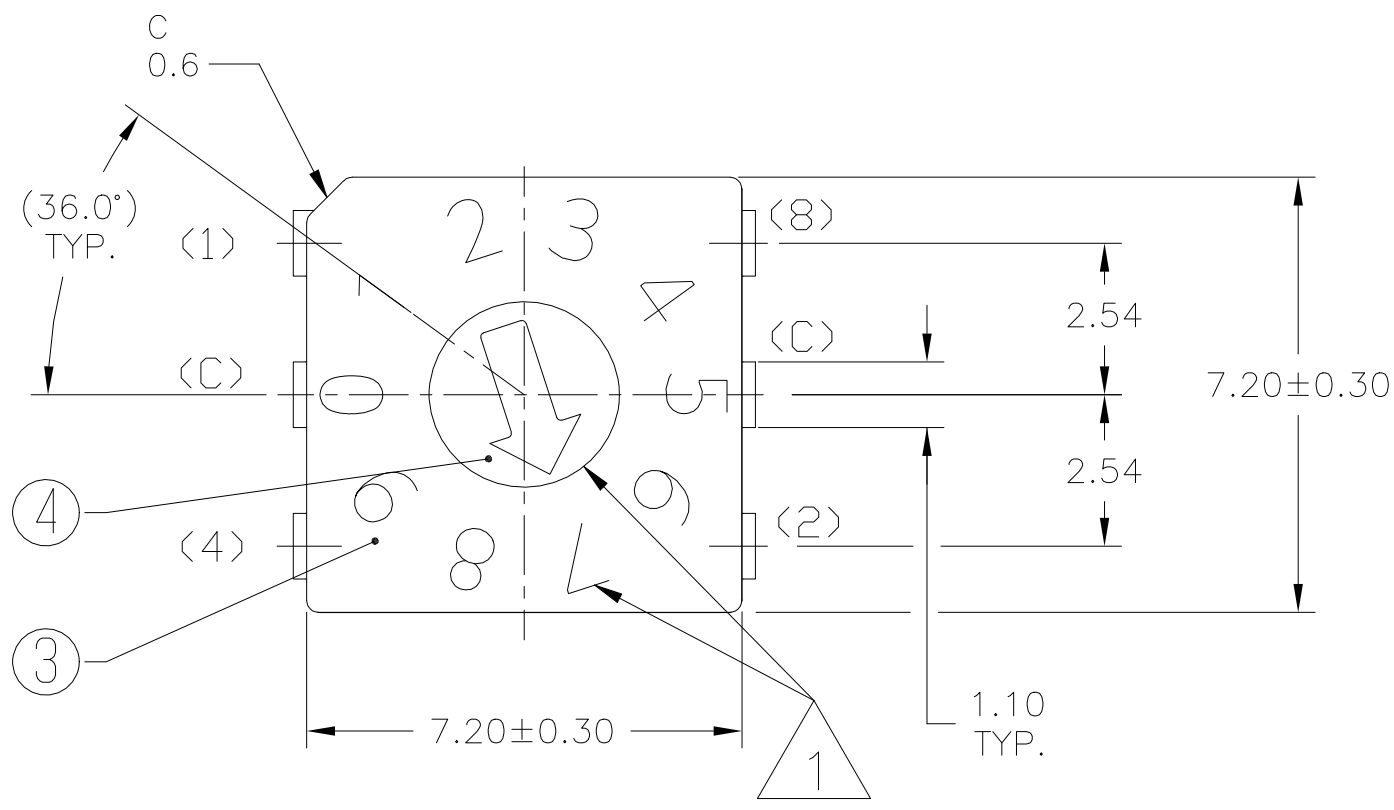


A DETAIL TYP.

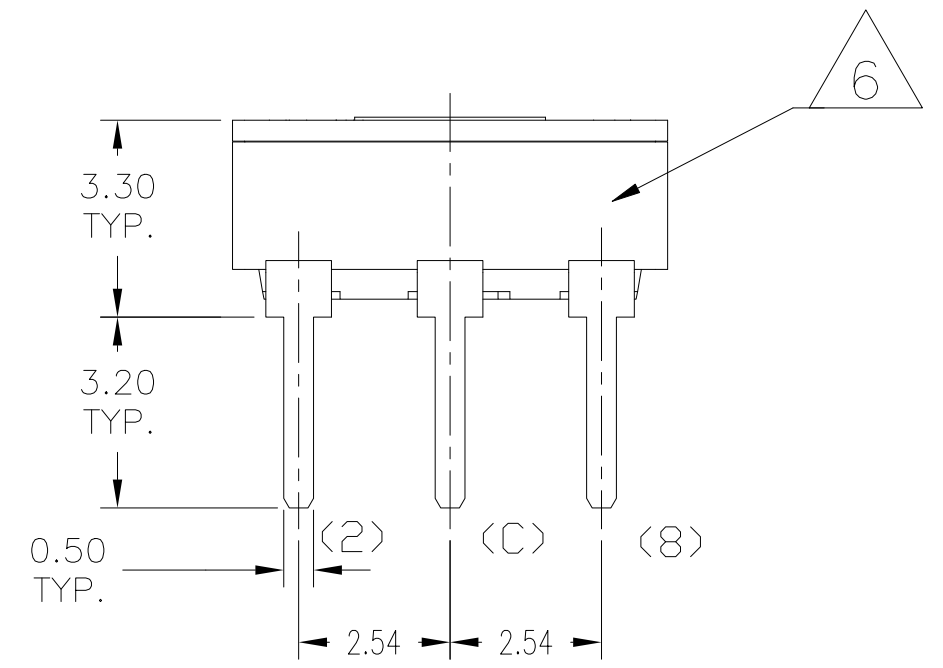
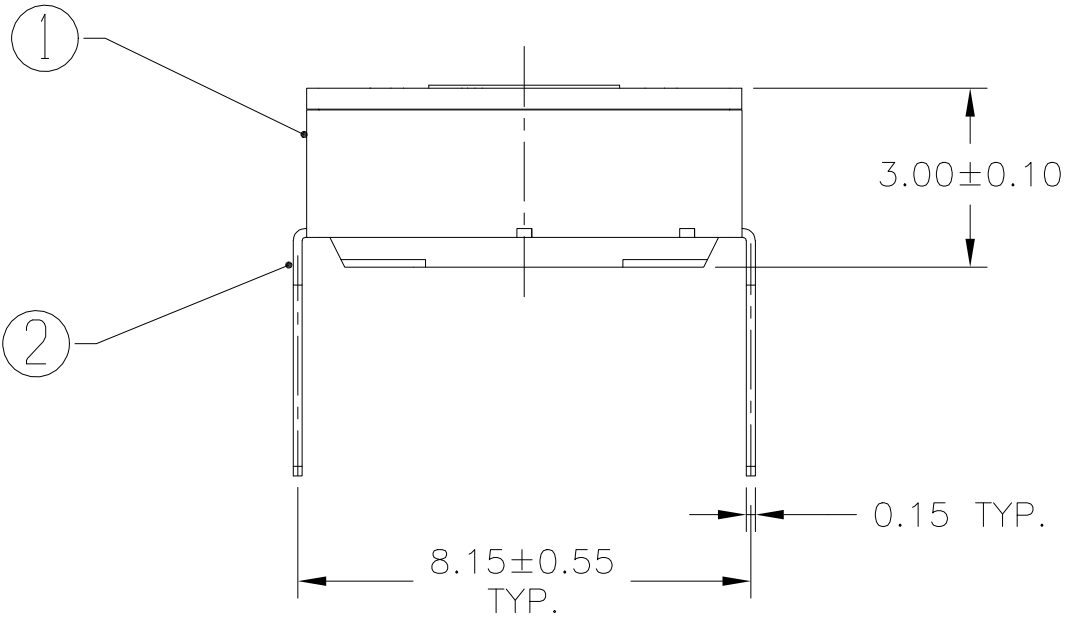
PRELIMINARY

THIS DRAWING IS A CONTROLLED DOCUMENT.		DWN 19JUL2022 SATHISH KUMAR_G	<b>TE</b> TE Connectivity																					
DIMENSIONS: mm		CHK 19JUL2022 ALEXANDER, SHARPE																						
TOLERANCES UNLESS OTHERWISE SPECIFIED: ±0.15		APVD 19JUL2022 ALEXANDER, SHARPE	NAME MRSS, MINIATURE ROTARY SWITCH SERIES, VERTICAL, 2.54 GRAY, LASER MARKING																					
<table border="1"> <tr><td>0 PL</td><td>±</td><td>-</td><td>-</td></tr> <tr><td>1 PL</td><td>±</td><td>-</td><td>-</td></tr> <tr><td>2 PL</td><td>±</td><td>-</td><td>-</td></tr> <tr><td>3 PL</td><td>±</td><td>-</td><td>-</td></tr> <tr><td>4 PL</td><td>±</td><td>-</td><td>-</td></tr> </table>		0 PL	±	-	-	1 PL	±	-	-	2 PL	±	-	-	3 PL	±	-	-	4 PL	±	-	-	PRODUCT SPEC	SIZE CAGE CODE DRAWING NO	
0 PL	±	-	-																					
1 PL	±	-	-																					
2 PL	±	-	-																					
3 PL	±	-	-																					
4 PL	±	-	-																					
MATERIAL		APPLICATION SPEC	RESTRICTED TO																					
FINISH		WEIGHT	A2 00779 C=2396233																					
		CUSTOMER DRAWING	SCALE 8:1	SHEET 2 OF 12 REV 1																				

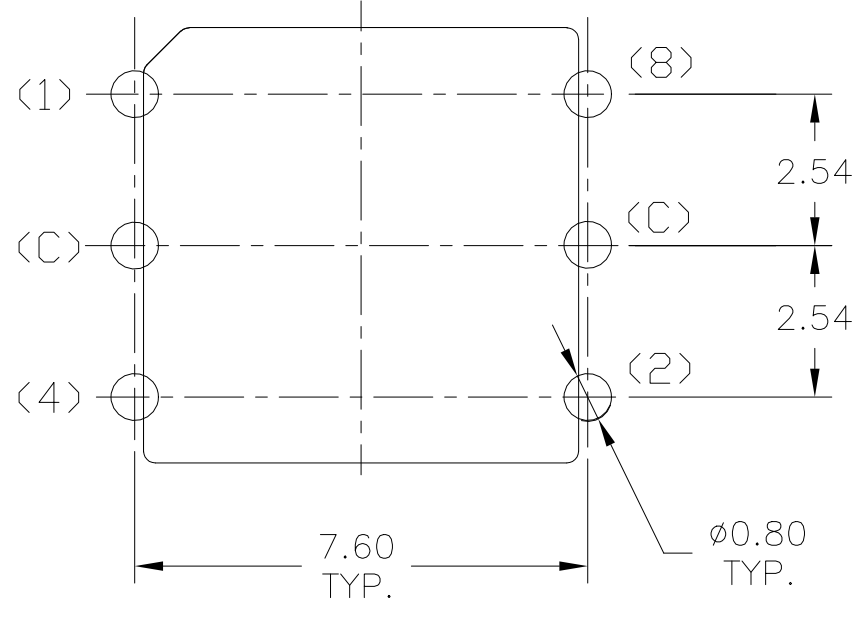
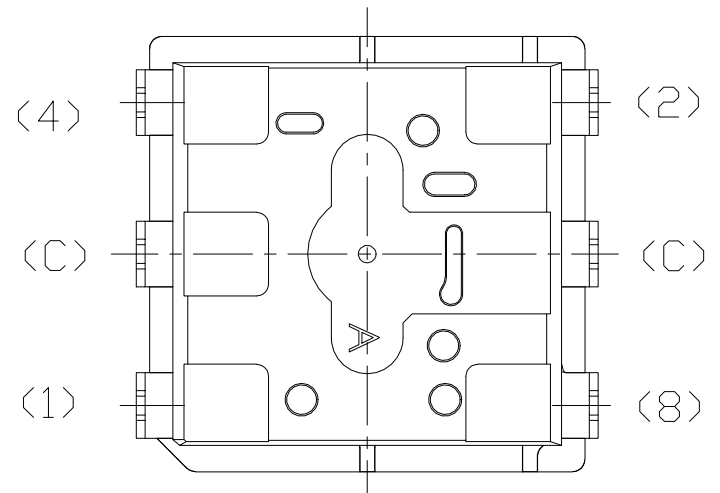
REVISIONS					
P	LTR	DESCRIPTION	DATE	DWN	APVD
-	-	SEE SHEET 1	-	-	-



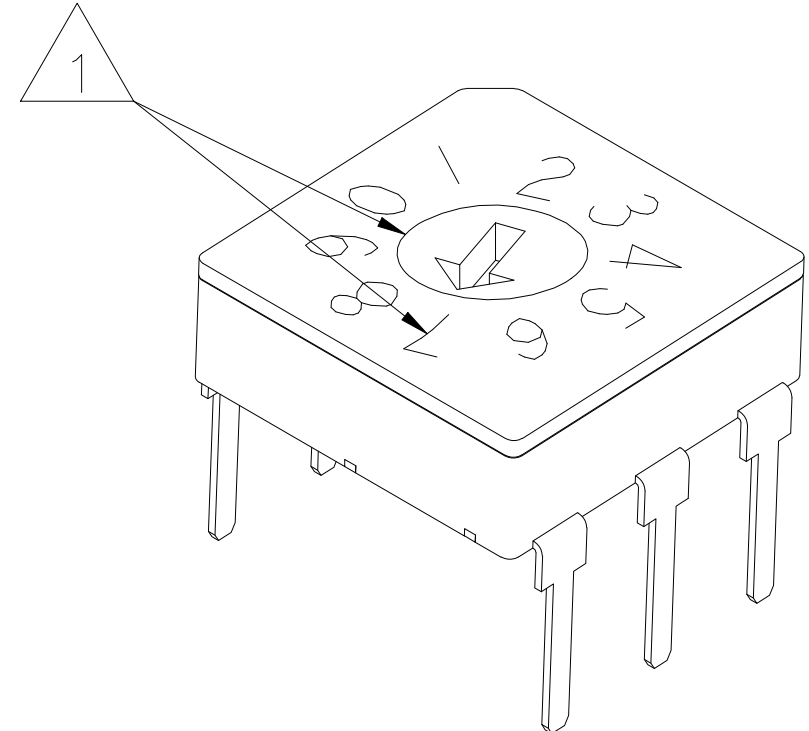
SEE SHEET 12 FOR CODE IDENTIFIER



CODE BINARY (COMPLEMENT/GRAY/REAL)  
 THROUGH-HOLE TERMINALS  
 COVER COLOR GRAY  
 LASER MARKING  
 10 POSITIONS



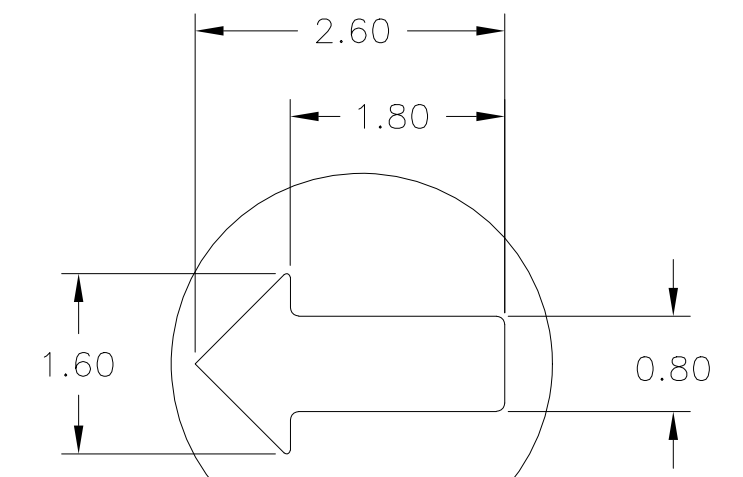
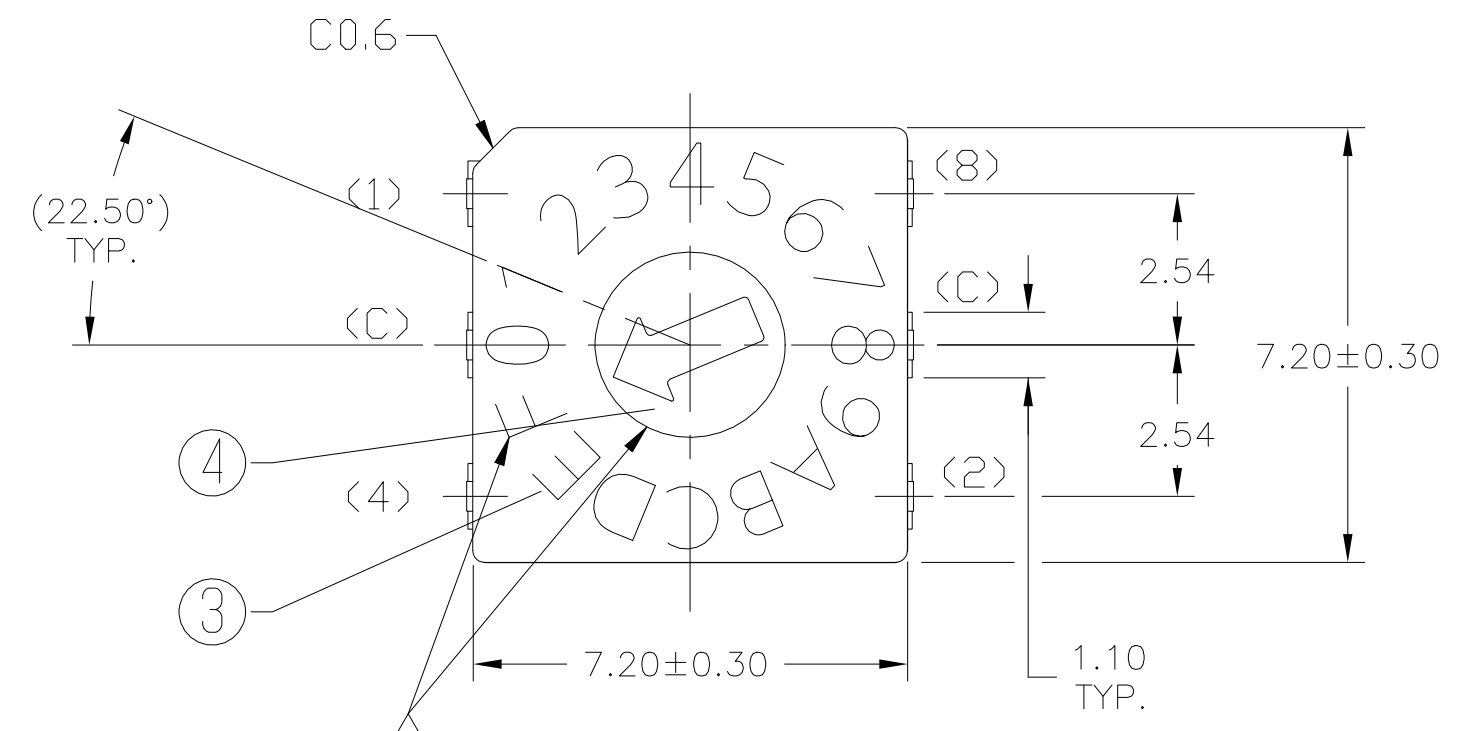
PCB Layout



**PRELIMINARY**

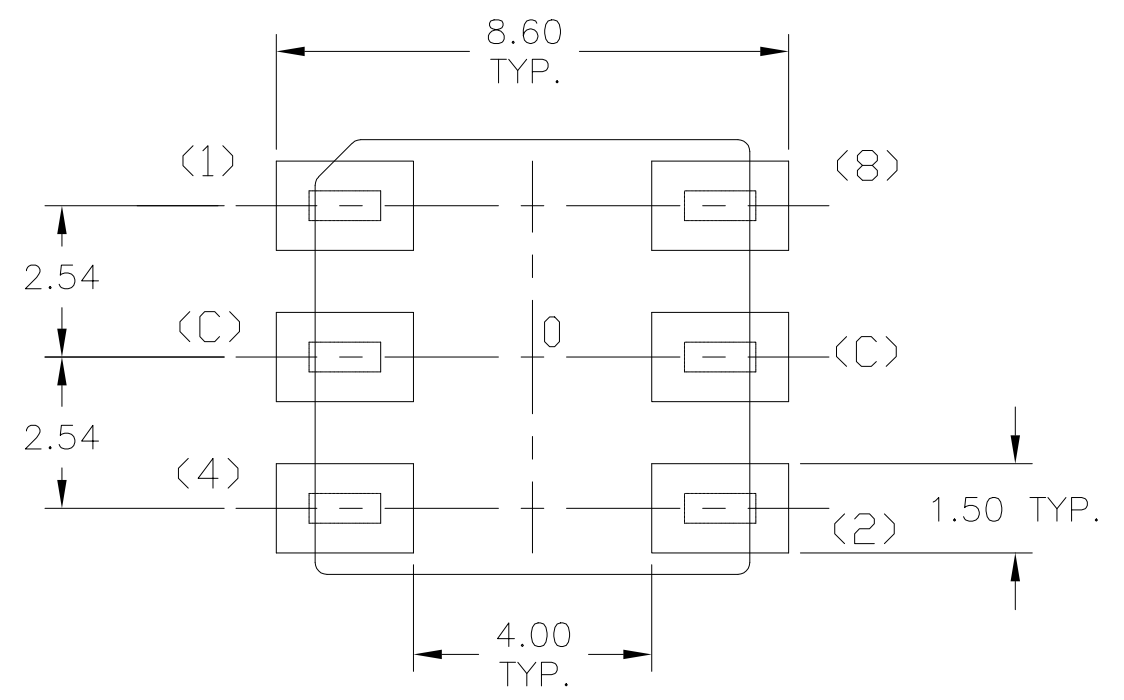
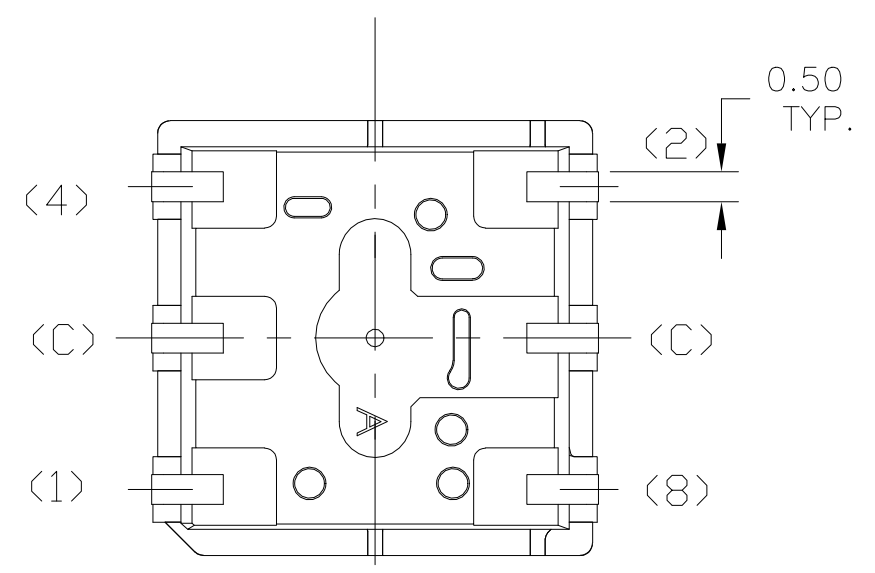
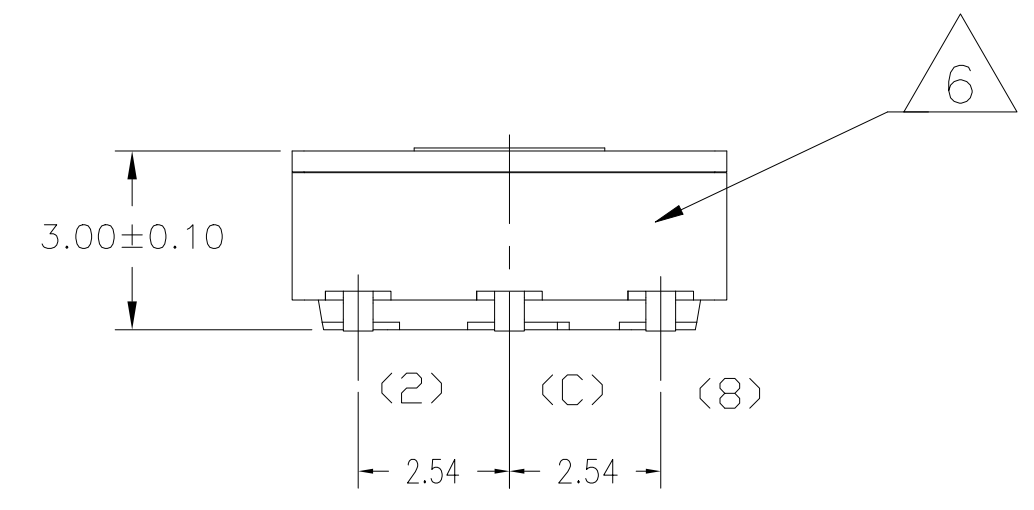
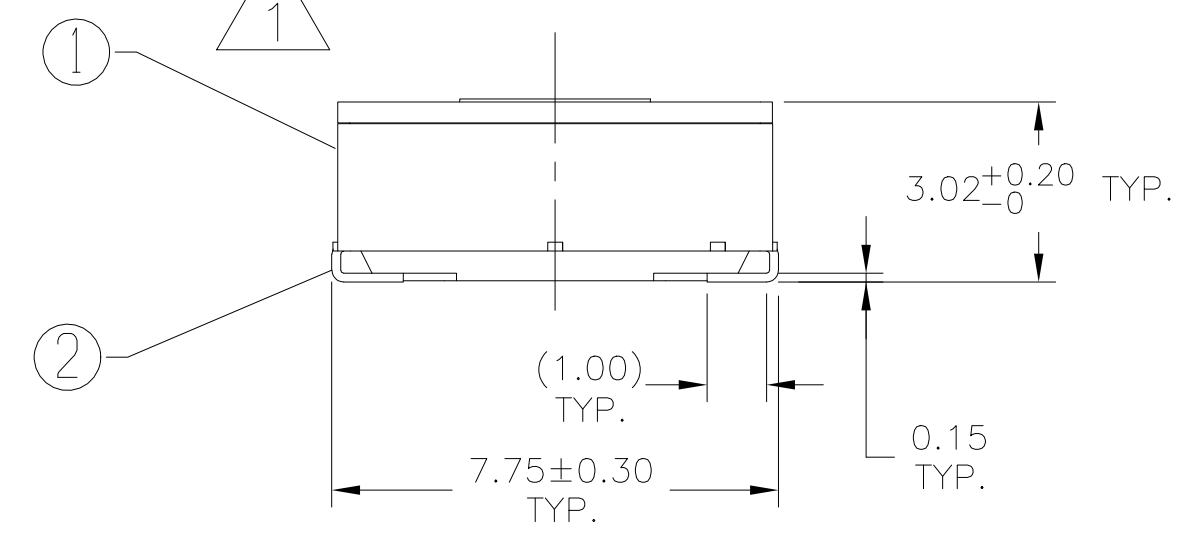
THIS DRAWING IS A CONTROLLED DOCUMENT.		DWN 19JUL2022 SATHISH KUMAR_G		TE Connectivity																
DIMENSIONS: mm		CHK 19JUL2022 ALEXANDER, SHARPE																		
TOLERANCES UNLESS OTHERWISE SPECIFIED: ±0.15		APVD 19JUL2022 ALEXANDER, SHARPE		NAME MRSS, MINIATURE ROTARY SWITCH SERIES, VERTICAL, 2.54 GRAY, LASER MARKING																
<table border="1"> <tr><td>0 PLC</td><td>±</td><td>-</td></tr> <tr><td>1 PLC</td><td>±</td><td>-</td></tr> <tr><td>2 PLC</td><td>±</td><td>-</td></tr> <tr><td>3 PLC</td><td>±</td><td>-</td></tr> <tr><td>4 PLC</td><td>±</td><td>-</td></tr> </table>		0 PLC	±	-	1 PLC	±	-	2 PLC	±	-	3 PLC	±	-	4 PLC	±	-	PRODUCT SPEC		SIZE A2	
0 PLC	±	-																		
1 PLC	±	-																		
2 PLC	±	-																		
3 PLC	±	-																		
4 PLC	±	-																		
MATERIAL		APPLICATION SPEC		CAGE CODE 00779																
FINISH		WEIGHT		DRAWING NO C=2396233																
		CUSTOMER DRAWING		RESTRICTED TO																
		SCALE 8:1		SHEET 3 of 12																
				REV 1																

REVISIONS					
P	LTR	DESCRIPTION	DATE	DWN	APVD
-	-	SEE SHEET 1	-	-	-

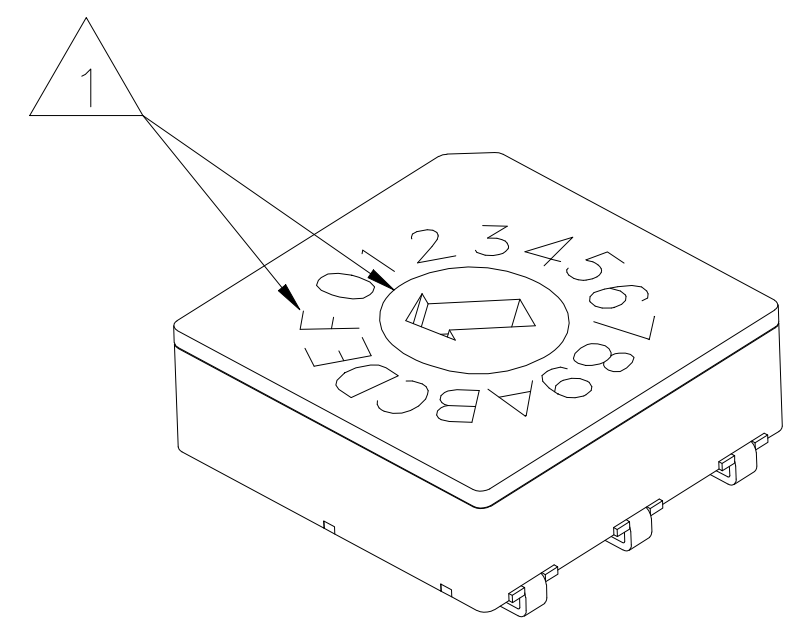


SEE SHEET 12 FOR  
CODE IDENTIFIER

CODE HEXADECIMAL (COMPLEMENT/GRAY/REAL)  
J-LEAD TERMINALS  
COVER COLOR GRAY  
LASER MARKING  
16 POSITIONS



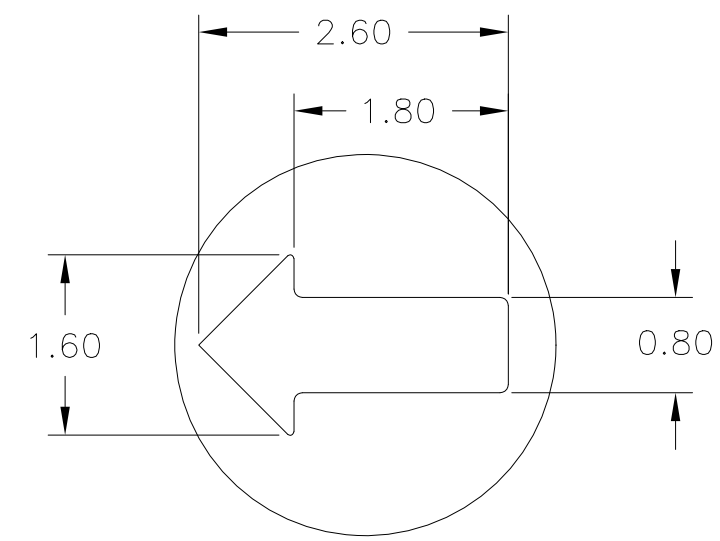
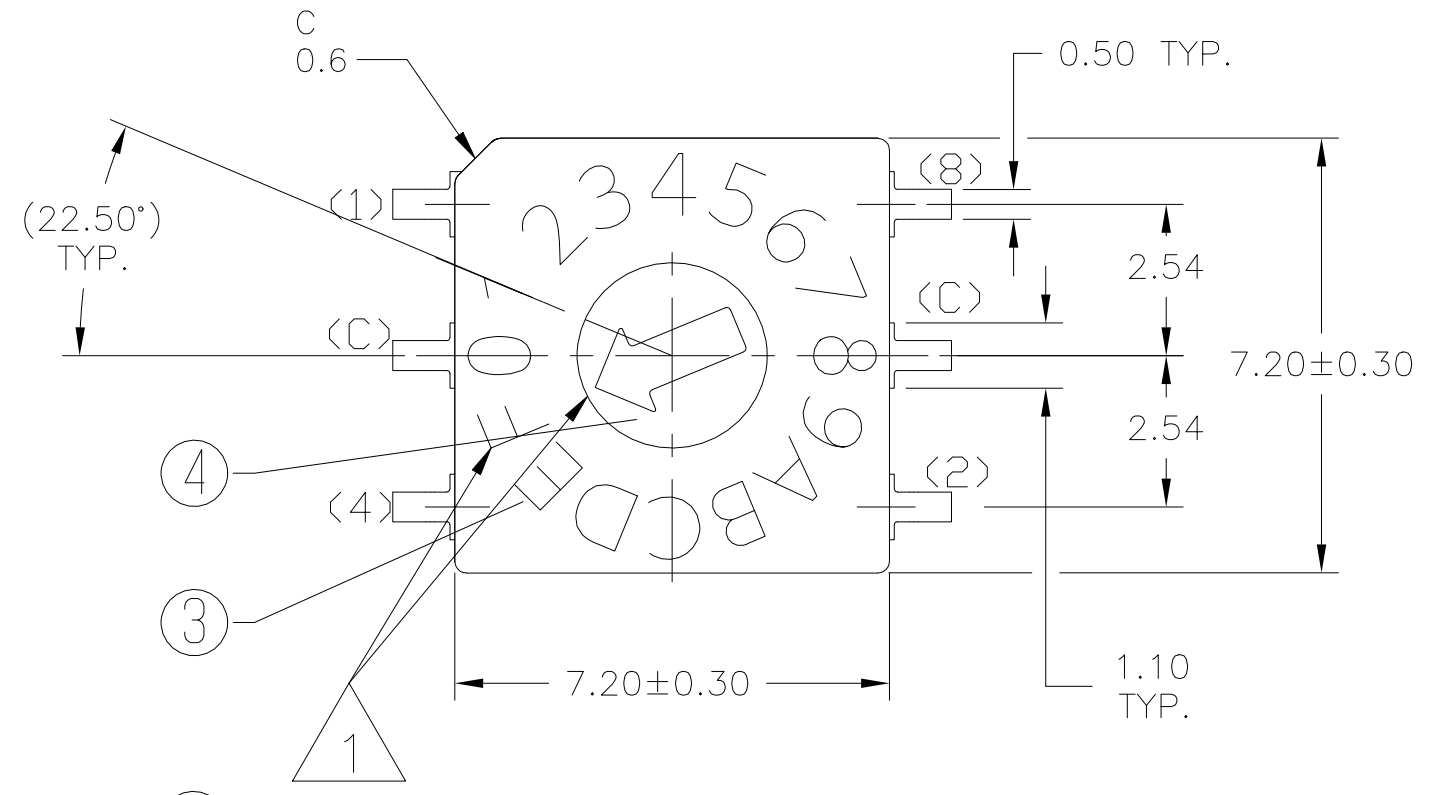
PCB Layout



**PRELIMINARY**

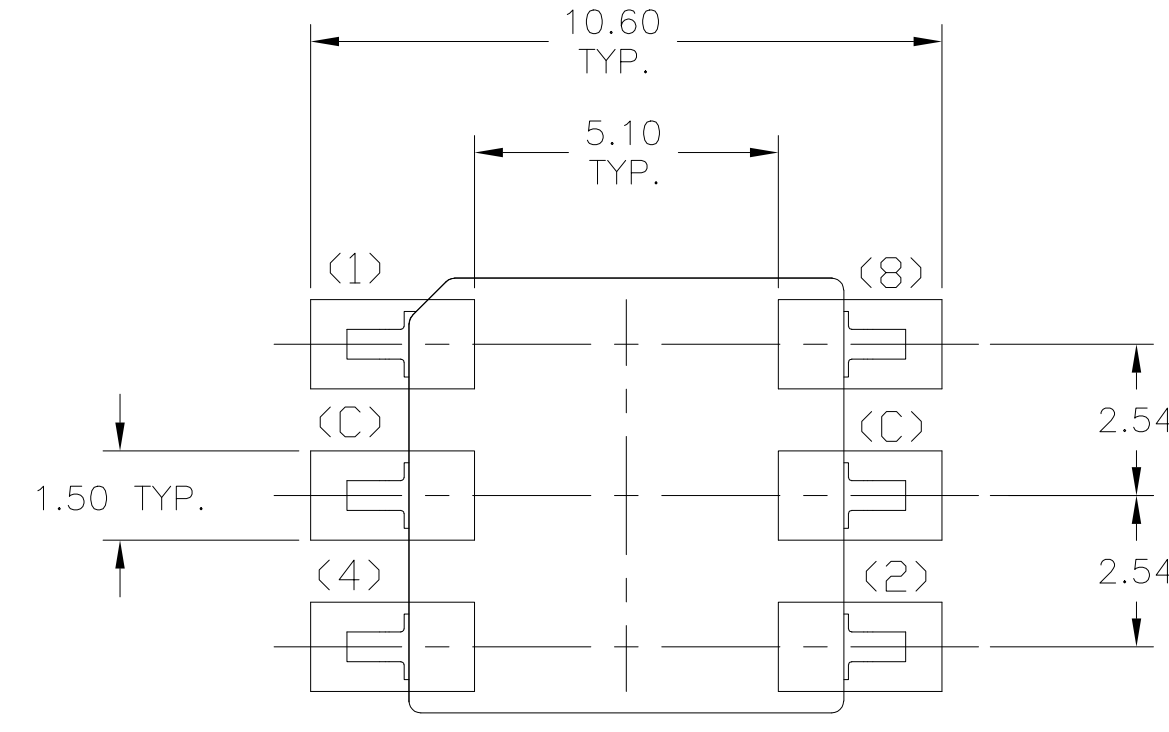
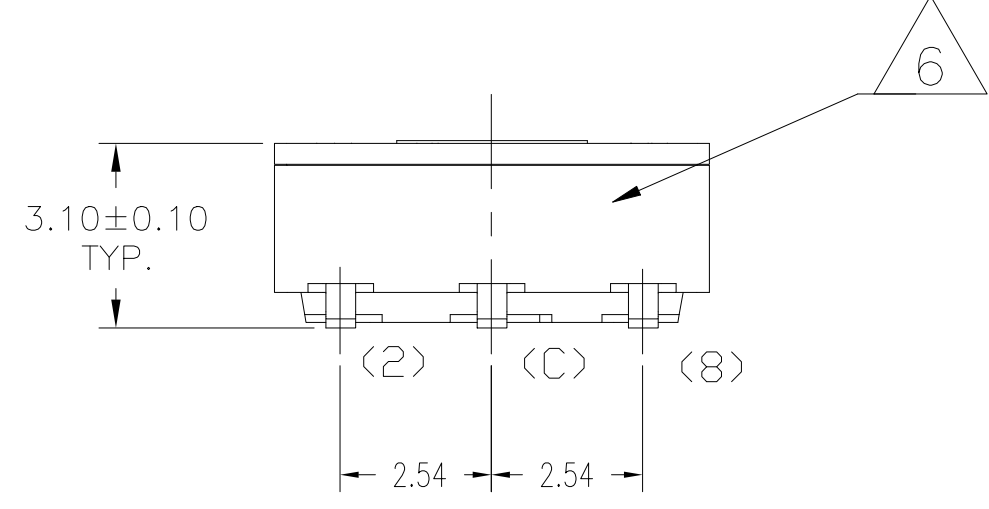
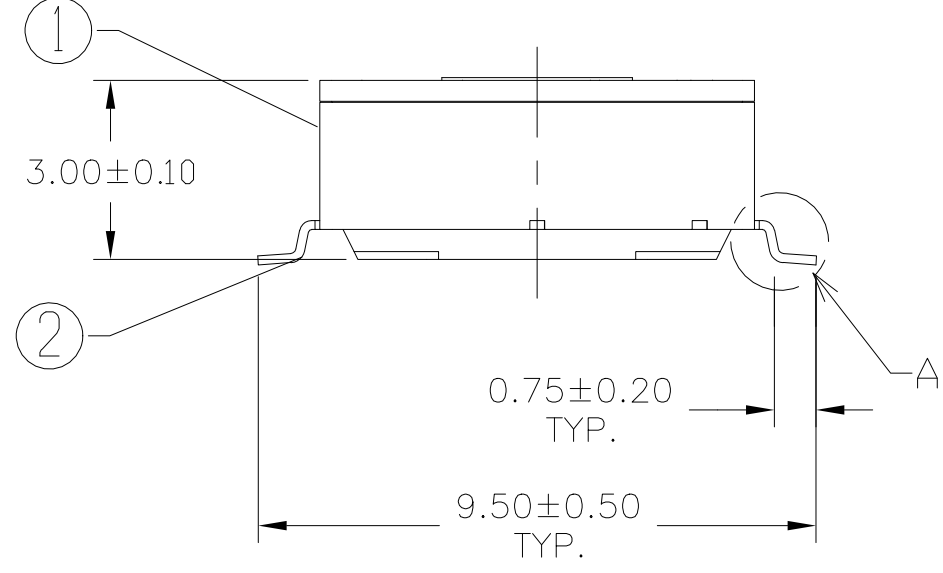
THIS DRAWING IS A CONTROLLED DOCUMENT.		DWN 19JUL2022 SATHISH KUMAR_G																	
DIMENSIONS: mm		CHK 19JUL2022 ALEXANDER, SHARPE																	
TOLERANCES UNLESS OTHERWISE SPECIFIED: ±0.15		APVD 19JUL2022 ALEXANDER, SHARPE	NAME MRSS, MINIATURE ROTARY SWITCH SERIES, VERTICAL, 2.54 GRAY, LASER MARKING																
<table border="1"> <tr><td>0 PLC</td><td>±</td><td>=</td></tr> <tr><td>1 PLC</td><td>±</td><td>=</td></tr> <tr><td>2 PLC</td><td>±</td><td>=</td></tr> <tr><td>3 PLC</td><td>±</td><td>=</td></tr> <tr><td>4 PLC</td><td>±</td><td>=</td></tr> </table>		0 PLC	±	=	1 PLC	±	=	2 PLC	±	=	3 PLC	±	=	4 PLC	±	=	PRODUCT SPEC	SIZE CAGE CODE DRAWING NO	
0 PLC	±	=																	
1 PLC	±	=																	
2 PLC	±	=																	
3 PLC	±	=																	
4 PLC	±	=																	
<table border="1"> <tr><td>ANGLES</td><td>±</td><td>=</td></tr> <tr><td>FINISH</td><td>±</td><td>=</td></tr> </table>		ANGLES	±	=	FINISH	±	=	APPLICATION SPEC	RESTRICTED TO										
ANGLES	±	=																	
FINISH	±	=																	
MATERIAL		WEIGHT	A2 00779	C=2396233															
		CUSTOMER DRAWING	SCALE 8:1	SHEET 4 OF 12 REV 1															

REVISIONS				
P	LTR	DESCRIPTION	DATE	APVD
-	-	SEE SHEET 1	-	-

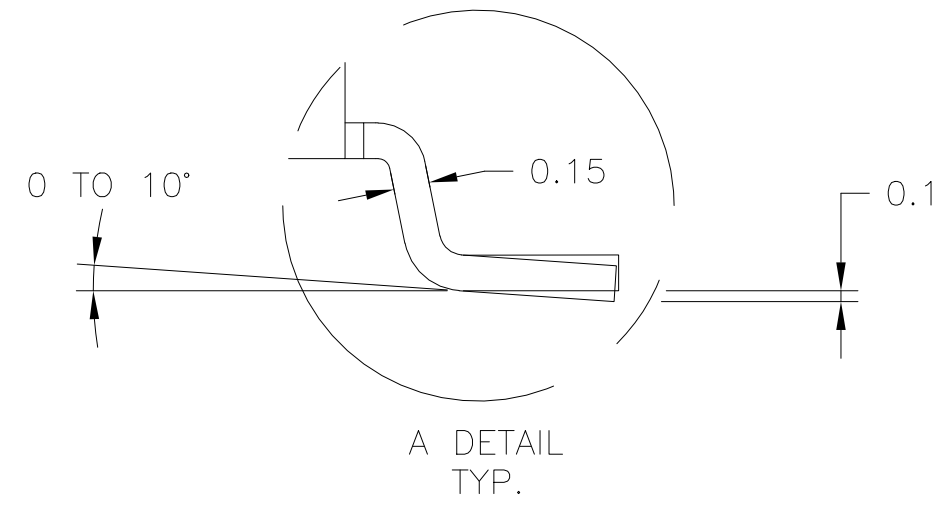
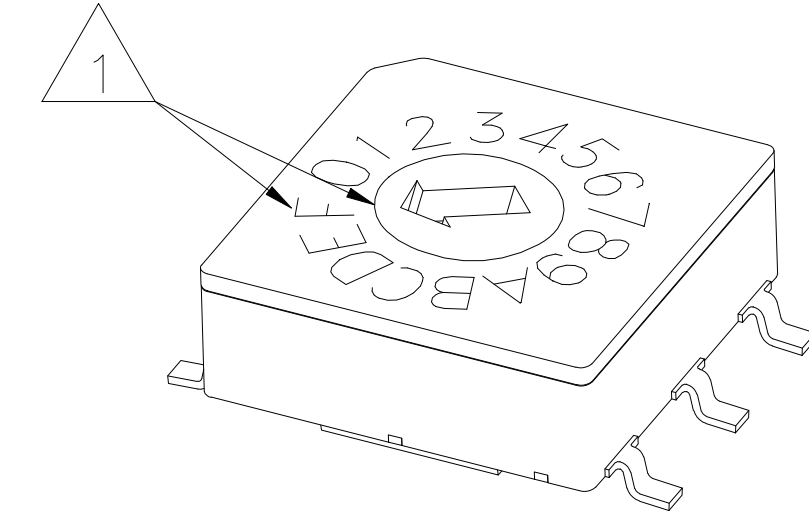


SEE SHEET 12 FOR CODE IDENTIFIER

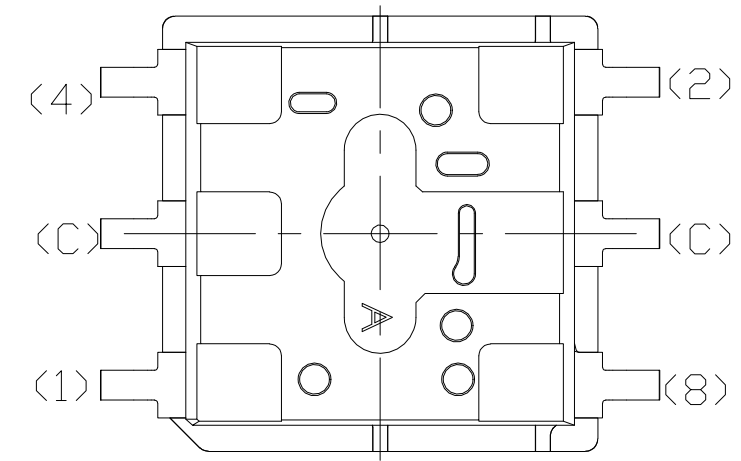
CODE HEXADECIMAL (COMPLEMENT/GRAY/REAL)  
 GULLWING TERMINALS  
 COVER COLOR GRAY  
 LASER MARKING  
 16 POSITIONS



PCB Layout



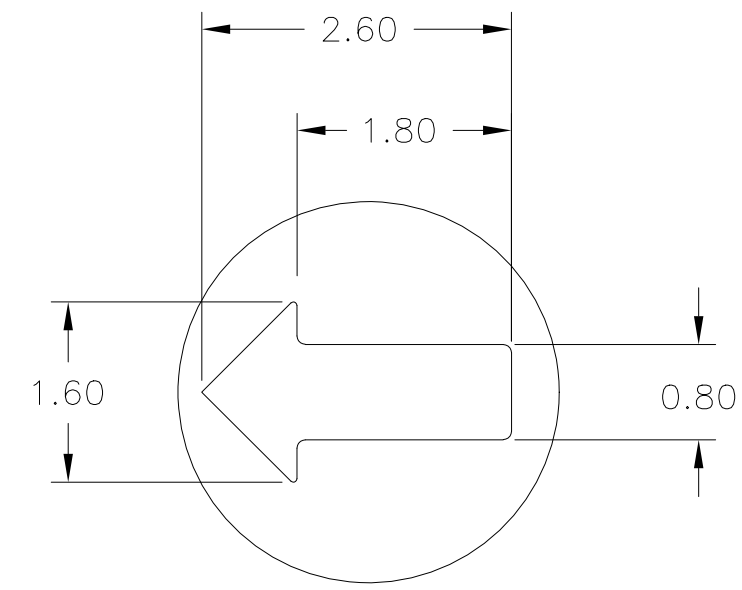
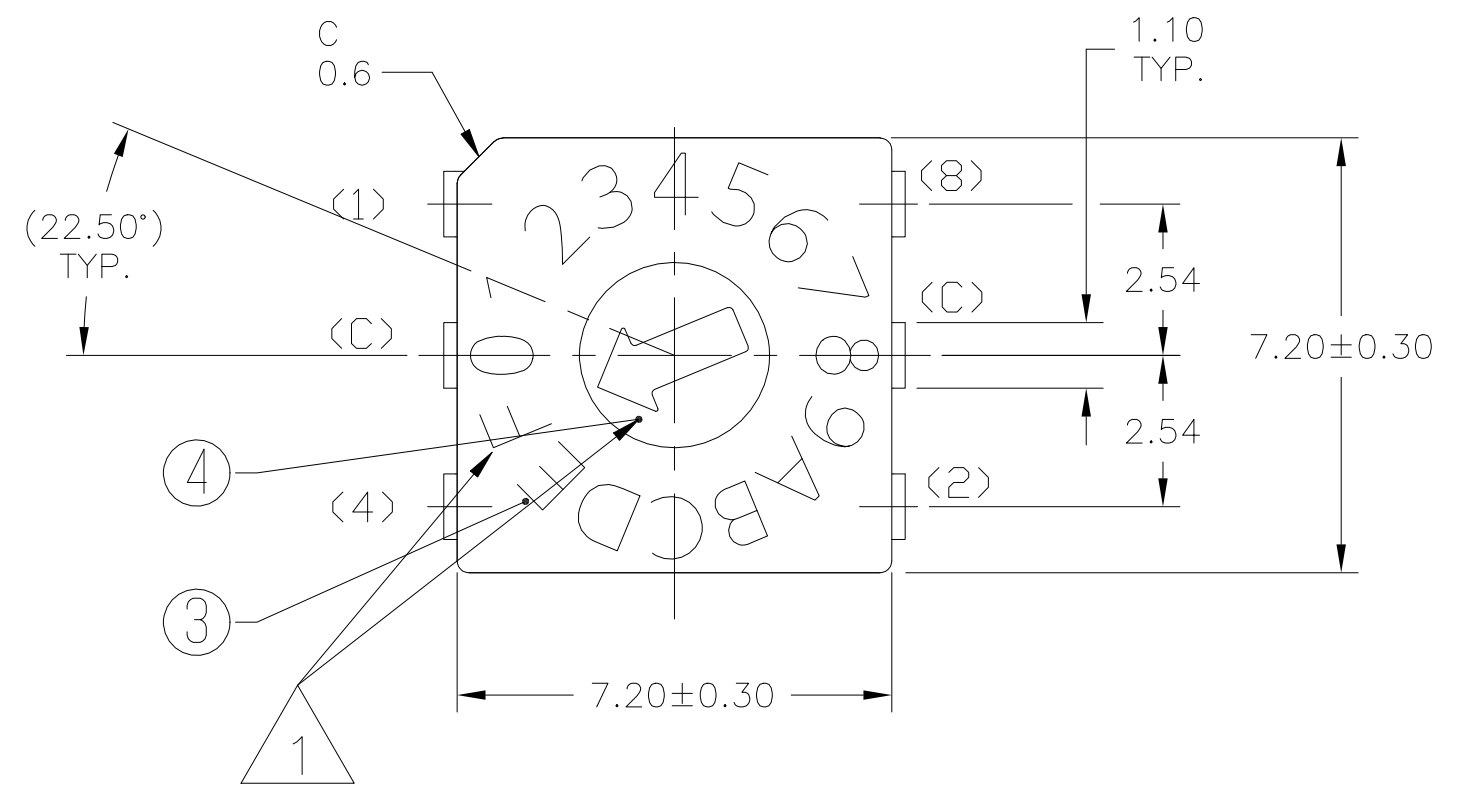
A DETAIL TYP.



**PRELIMINARY**

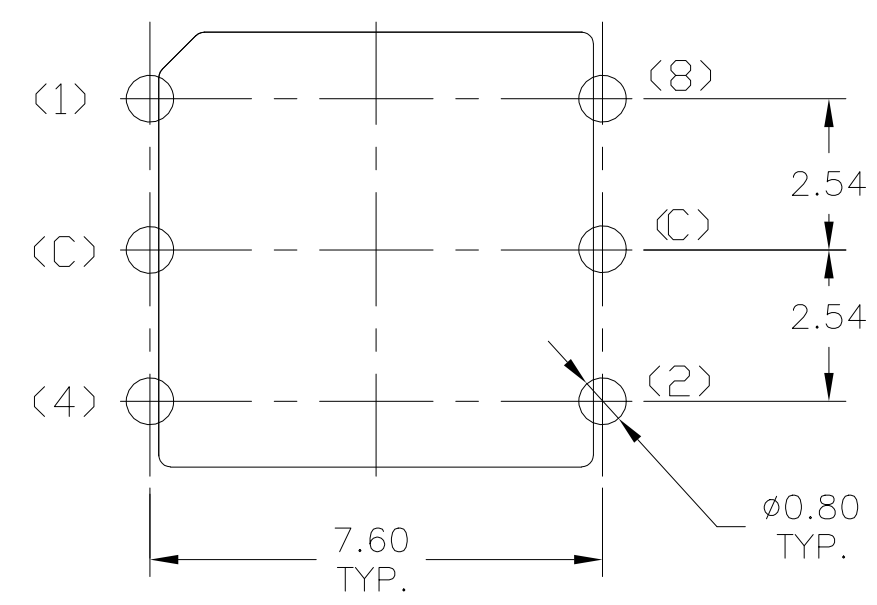
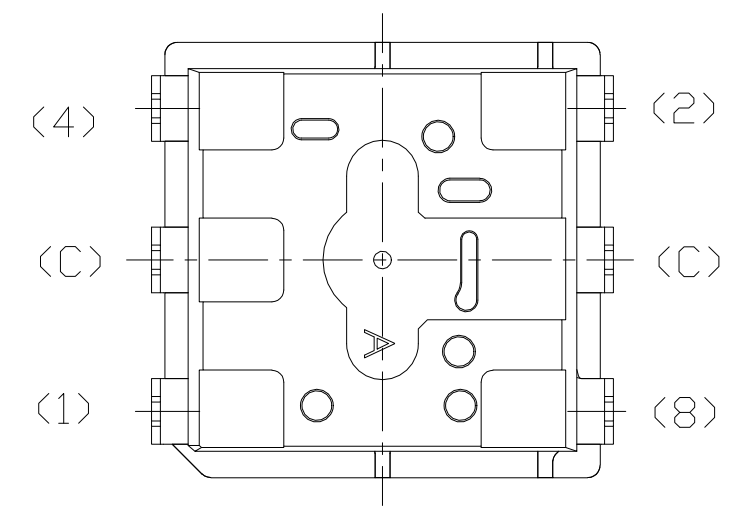
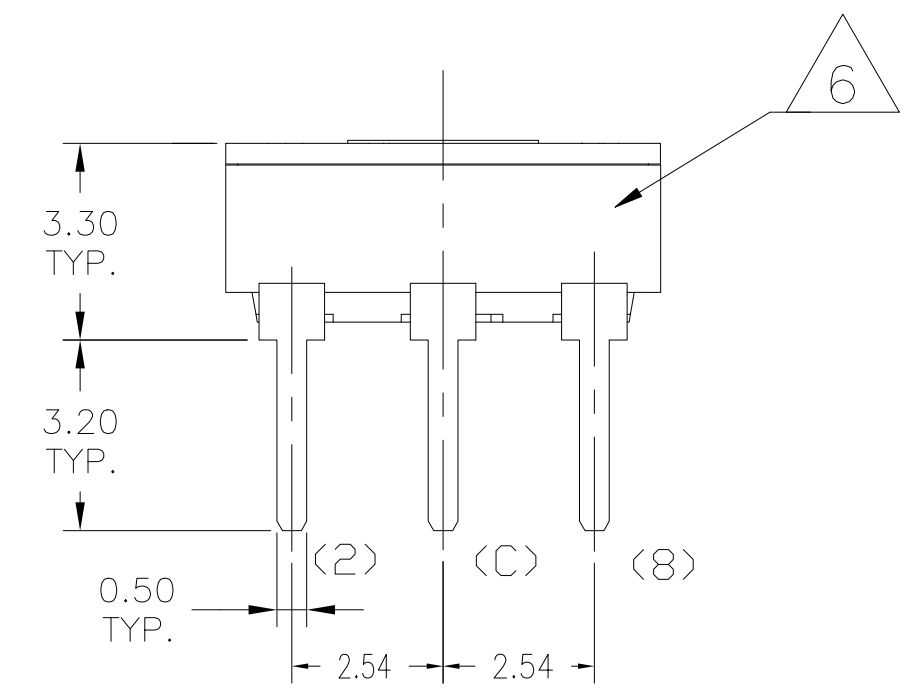
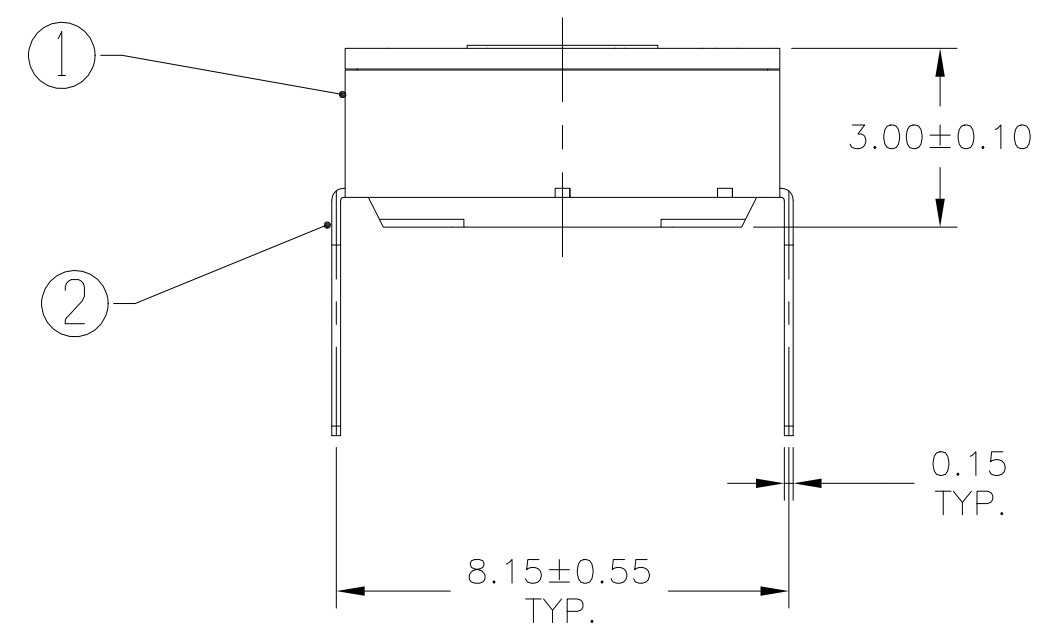
THIS DRAWING IS A CONTROLLED DOCUMENT.		DWN 19JUL2022 SATHISH KUMAR_G	<b>TE</b> TE Connectivity																
DIMENSIONS: mm		CHK 19JUL2022 ALEXANDER, SHARPE																	
TOLERANCES UNLESS OTHERWISE SPECIFIED: ±0.15		APVD 19JUL2022 ALEXANDER, SHARPE	NAME MRSS, MINIATURE ROTARY SWITCH SERIES, VERTICAL, 2.54 GRAY, LASER MARKING																
<table border="1"> <tr><td>0 PL</td><td>±</td><td>=</td></tr> <tr><td>1 PL</td><td>±</td><td>=</td></tr> <tr><td>2 PL</td><td>±</td><td>=</td></tr> <tr><td>3 PL</td><td>±</td><td>=</td></tr> <tr><td>4 PL</td><td>±</td><td>=</td></tr> </table>		0 PL	±	=	1 PL	±	=	2 PL	±	=	3 PL	±	=	4 PL	±	=	PRODUCT SPEC	SIZE CAGE CODE DRAWING NO	
0 PL	±	=																	
1 PL	±	=																	
2 PL	±	=																	
3 PL	±	=																	
4 PL	±	=																	
MATERIAL		APPLICATION SPEC	RESTRICTED TO																
FINISH		WEIGHT	A2 00779 C=2396233																
		CUSTOMER DRAWING	SCALE 8:1	SHEET 5 of 12 REV 1															

REVISIONS					
P	LTR	DESCRIPTION	DATE	DWN	APVD
-	-	SEE SHEET 1	-	-	-

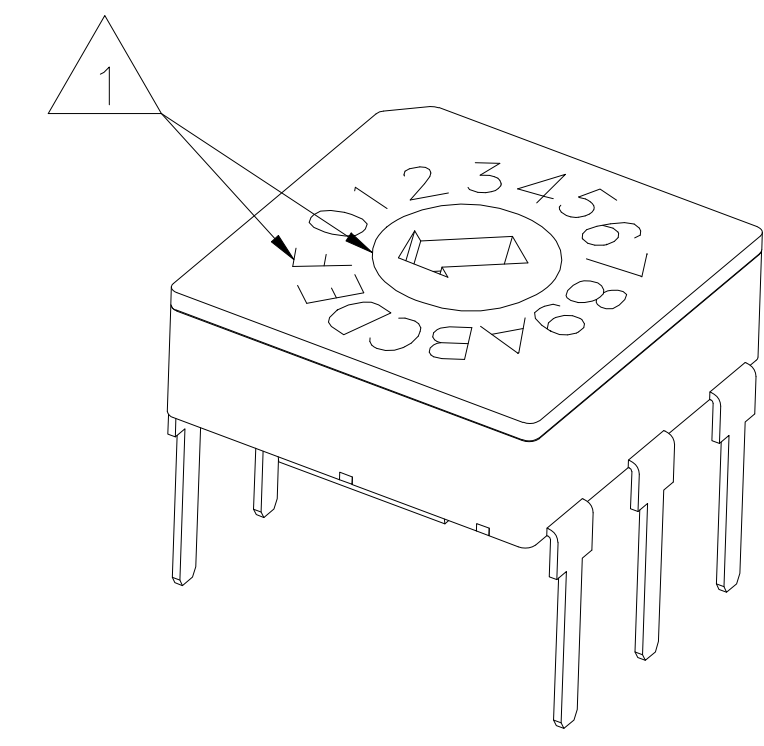


SEE SHEET 12 FOR CODE IDENTIFIER

CODE HEXADECIMAL  
(COMPLEMENT/GRAY/REAL)  
THROUGH-HOLE TERMINALS  
COVER COLOR GRAY  
LASER MARKING  
16 POSITIONS



PCB Layout



**PRELIMINARY**

THIS DRAWING IS A CONTROLLED DOCUMENT.		DWN 19JUL2022 SATHISH KUMAR_G	TE Connectivity																
DIMENSIONS: mm		CHK 19JUL2022 ALEXANDER, SHARPE																	
TOLERANCES UNLESS OTHERWISE SPECIFIED: ±0.15		APVD 19JUL2022 ALEXANDER, SHARPE	NAME MRSS, MINIATURE ROTARY SWITCH SERIES, VERTICAL, 2.54 GRAY, LASER MARKING																
<table border="1"> <tr><td>0 PLC</td><td>±</td><td>-</td></tr> <tr><td>1 PLC</td><td>±</td><td>-</td></tr> <tr><td>2 PLC</td><td>±</td><td>-</td></tr> <tr><td>3 PLC</td><td>±</td><td>-</td></tr> <tr><td>4 PLC</td><td>±</td><td>-</td></tr> </table>		0 PLC	±	-	1 PLC	±	-	2 PLC	±	-	3 PLC	±	-	4 PLC	±	-	PRODUCT SPEC	SIZE A2	
0 PLC	±	-																	
1 PLC	±	-																	
2 PLC	±	-																	
3 PLC	±	-																	
4 PLC	±	-																	
<table border="1"> <tr><td>ANGLES</td><td>±</td><td>-</td></tr> <tr><td>FINISH</td><td>-</td><td>-</td></tr> </table>		ANGLES	±	-	FINISH	-	-	APPLICATION SPEC	CAGE CODE 00779	DRAWING NO C=2396233									
ANGLES	±	-																	
FINISH	-	-																	
MATERIAL -		WEIGHT -	SCALE 8:1	SHEET 6 of 12															
		CUSTOMER DRAWING	RESTRICTED TO -	REV 1															

REVISIONS					
P	LTR	DESCRIPTION	DATE	DWN	APVD
-	-	SEE SHEET 1	-	-	-

10 POSITION, BINARY COMPLEMENT										
POS	0	1	2	3	4	5	6	7	8	9
C	X	X	X	X	X	X	X	X	X	X
1	X		X		X		X		X	
2	X	X			X	X			X	X
4	X	X	X	X					X	X
8	X	X	X	X	X	X	X	X		

16 POSITION, HEXADECIMAL COMPLEMENT																
POS	0	1	2	3	4	5	6	7	8	9	A	B	C	D	E	F
C	X	X	X	X	X	X	X	X	X	X	X	X	X	X	X	X
1	X		X		X		X		X		X		X		X	
2	X	X			X	X			X	X			X	X		
4	X	X	X	X					X	X	X	X				
8	X	X	X	X	X	X	X	X								

10 POSITION, BINARY GRAY										
POS	0	1	2	3	4	5	6	7	8	9
C	X	X	X	X	X	X	X	X	X	X
1		X	X			X	X			X
2			X	X	X	X				
4					X	X	X	X	X	X
8									X	X

16 POSITION, HEXADECIMAL GRAY																
POS	0	1	2	3	4	5	6	7	8	9	A	B	C	D	E	F
C	X	X	X	X	X	X	X	X	X	X	X	X	X	X	X	X
1		X	X		X	X			X	X			X	X		
2			X	X	X				X	X	X	X				
4					X	X	X	X	X	X	X					
8								X	X	X	X	X	X	X	X	X

10 POSITION, BINARY REAL										
POS	0	1	2	3	4	5	6	7	8	9
C	X	X	X	X	X	X	X	X	X	X
1		X		X		X		X		X
2			X	X		X	X			
4					X	X	X	X	X	X
8									X	X

16 POSITION, HEXADECIMAL REAL																
POS	0	1	2	3	4	5	6	7	8	9	A	B	C	D	E	F
C	X	X	X	X	X	X	X	X	X	X	X	X	X	X	X	X
1		X		X		X		X		X		X		X		X
2			X	X		X	X			X	X				X	X
4					X	X	X	X					X	X	X	X
8								X	X	X	X	X	X	X	X	X

ACTUATION	ACTUATOR POSITION	CODE	POSITIONS	SOLDER TERMINAL CONFIGURATION	PACKAGING	TE SMART PART NUMBER	TE PART NUMBER	
SCREWDRIVER SLOT, FLUSH	0	HEXADECIMAL REAL	16	THROUGH-HOLE	TUBE	MRSSV0DR16THT	3-2396233-0	
				GULLWING	TUBE	MRSSV0DR16SMGWT	2-2396233-9	
				J-LEAD	TAPE & REEL	MRSSV0DR16SMGWTR	2-2396233-8	
			BINARY REAL	10	THROUGH-HOLE	TUBE	MRSSV0DR16SMJT	2-2396233-7
					GULLWING	TUBE	MRSSV0DR16SMJTR	2-2396233-6
					J-LEAD	TAPE & REEL	MRSSV0DR10SMJTR	2-2396233-5
		HEXADECIMAL GRAY	16	THROUGH-HOLE	TUBE	MRSSV0DR10THT	2-2396233-5	
				GULLWING	TUBE	MRSSV0DR10SMGWT	2-2396233-4	
				J-LEAD	TAPE & REEL	MRSSV0DR10SMGWTR	2-2396233-3	
			BINARY GRAY	10	THROUGH-HOLE	TUBE	MRSSV0DR10SMJT	2-2396233-2
					GULLWING	TUBE	MRSSV0DR10SMJTR	2-2396233-1
					J-LEAD	TAPE & REEL	MRSSV0DR10SMJTR	2-2396233-1
		HEXADECIMAL COMPLEMENT	16	THROUGH-HOLE	TUBE	MRSSV0DG16THT	2-2396233-0	
				GULLWING	TUBE	MRSSV0DG16SMGWT	1-2396233-9	
				J-LEAD	TAPE & REEL	MRSSV0DG16SMGWTR	1-2396233-8	
			BINARY COMPLEMENT	10	THROUGH-HOLE	TUBE	MRSSV0DG16SMJT	1-2396233-7
					GULLWING	TUBE	MRSSV0DG16SMJTR	1-2396233-6
					J-LEAD	TAPE & REEL	MRSSV0DG10SMJTR	1-2396233-5
		HEXADECIMAL COMPLEMENT	16	THROUGH-HOLE	TUBE	MRSSV0DG10THT	1-2396233-5	
				GULLWING	TUBE	MRSSV0DG10SMGWT	1-2396233-4	
				J-LEAD	TAPE & REEL	MRSSV0DG10SMGWTR	1-2396233-3	
			HEXADECIMAL COMPLEMENT	16	THROUGH-HOLE	TUBE	MRSSV0DG10SMJT	1-2396233-2
					GULLWING	TUBE	MRSSV0DG10SMJTR	1-2396233-1
					J-LEAD	TAPE & REEL	MRSSV0DG10SMJTR	1-2396233-1
HEXADECIMAL COMPLEMENT	16	THROUGH-HOLE	TUBE	MRSSV0DC16THT	1-2396233-0			
		GULLWING	TUBE	MRSSV0DC16SMGWT	2396233-9			
		J-LEAD	TAPE & REEL	MRSSV0DC16SMGWTR	2396233-8			
	BINARY COMPLEMENT	10	THROUGH-HOLE	TUBE	MRSSV0DC16SMJT	2396233-7		
			GULLWING	TUBE	MRSSV0DC16SMJTR	2396233-6		
			J-LEAD	TAPE & REEL	MRSSV0DC10SMJTR	2396233-5		
HEXADECIMAL COMPLEMENT	16	THROUGH-HOLE	TUBE	MRSSV0DC10THT	2396233-5			
		GULLWING	TUBE	MRSSV0DC10SMGWT	2396233-4			
		J-LEAD	TAPE & REEL	MRSSV0DC10SMGWTR	2396233-3			
	BINARY COMPLEMENT	10	THROUGH-HOLE	TUBE	MRSSV0DC10SMJT	2396233-2		
			GULLWING	TUBE	MRSSV0DC10SMJTR	2396233-1		
			J-LEAD	TAPE & REEL	MRSSV0DC10SMJTR	2396233-1		

LEGEND

TE SMART PART NUMBER MRSS                                        

ACTUATOR ORIENTATION \_\_\_\_\_  
 V=VERTICAL  
 H=HORIZONTAL

CONFIGURATION/PITCH/COVER COLOR OR BRACKET/MARKING: \_\_\_\_\_  
 0=DIP/2.54/GRAY/LASER  
 1=DIP/2.54/BLACK/PRINTED, SEE TE DRAWING 2396234  
 4=SIP/1.27/STAINLESS STEEL/LASER, SEE TE DRAWING 2396236

ACTUATOR TYPE \_\_\_\_\_  
 D=SCREWDRIVER SLOT, FLUSH

CODE \_\_\_\_\_  
 C=COMPLEMENT  
 G=GRAY  
 R=REAL

POSITIONS \_\_\_\_\_  
 10  
 16

TERMINATION TYPE \_\_\_\_\_  
 SM =SURFACE MOUNT  
 TH =THROUGH-HOLE

SOLDER TERMINAL CONFIGURATION: \_\_\_\_\_  
 J = J-LEAD  
 GW=GULLWING  
 BLANK=THROUGH-HOLE

PACKAGING: \_\_\_\_\_  
 T = TUBE  
 TR=TAPE AND REEL

**PRELIMINARY**

THIS DRAWING IS A CONTROLLED DOCUMENT.

DIMENSIONS: mm	TOLERANCES UNLESS OTHERWISE SPECIFIED:	DWN 19JUL2022 SATHISH KUMAR G	TE Connectivity
	0 PLC ± = 1 PLC ± = 2 PLC ± = 3 PLC ± = 4 PLC ± =	CHK 19JUL2022 ALEXANDER, SHARPE	
MATERIAL	ANGLES FINISH	APVD 19JUL2022 ALEXANDER, SHARPE	NAME MRSS, MINIATURE ROTARY SWITCH SERIES, VERTICAL, 2.54 GRAY, LASER MARKING
		APPLICATION SPEC	SIZE A2 CAGE CODE 00779 DRAWING NO C=2396233 RESTRICTED TO
		WEIGHT	SCALE 8:1 SHEET 7 OF 12 REV 1

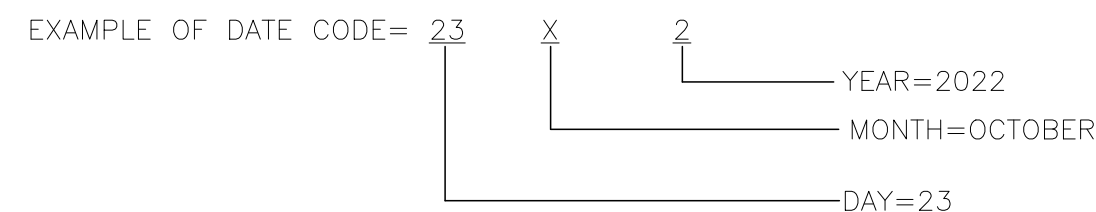
CUSTOMER DRAWING

REVISIONS				
P	LTR	DESCRIPTION	DATE	DWN
-	-	SEE SHEET 1	-	-

NOTES:

- SEE TABLE, SHEET 7 OF 12 FOR ACTUATOR POSITION WHEN DELIVERED, THE SWITCH SHALL REMAIN IN THIS POSITION DURING MOUNTING/TERMINATION TO AND CLEANING OF THE P.C.BOARD.
- COMPLIANCE: THE CURRENT STATEMENT OF COMPLIANCE IS AVAILABLE AT TE.COM
- IF THE SWITCH IS NOT ACTUATED FOR AN EXTENDED PERIOD OF TIME, SIX MONTHS, IT MAY REQUIRE ACTUATING TO RESTORE SWITCH FUNCTION.
- MSL 1 PER JIS C61760-4:2016 AND IEC 61760-4:2015
- TAPE AND REEL PER EIA 481 TAPE WIDTH 16MM, PITCH 16MM, SEE SHEET 9 OF 12.

TE PART NUMBER AND DATE CODE



- MONTH=
- 1 = JANUARY
  - 2 = FEBRUARY
  - 3 = MARCH
  - 4 = APRIL
  - 5 = MAY
  - 6 = JUNE
  - 7 = JULY
  - 8 = AUGUST
  - 9 = SEPTEMBER
  - X = OCTOBER
  - Y = NOVEMBER
  - Z = DECEMBER

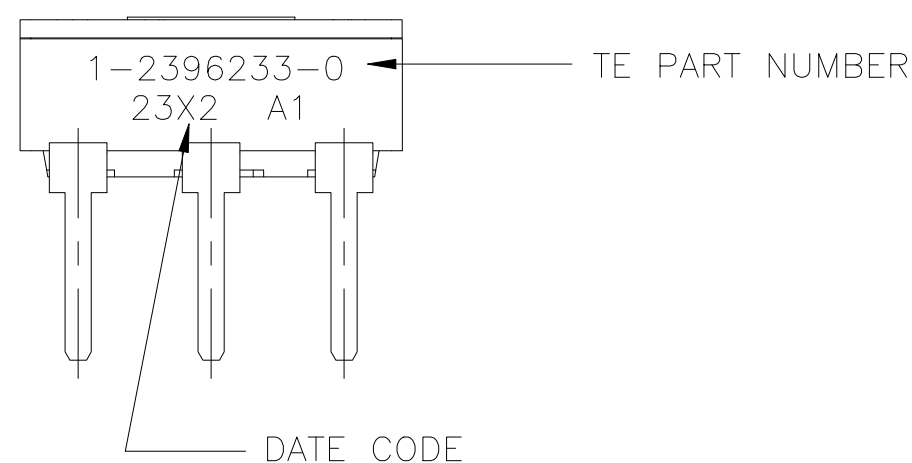
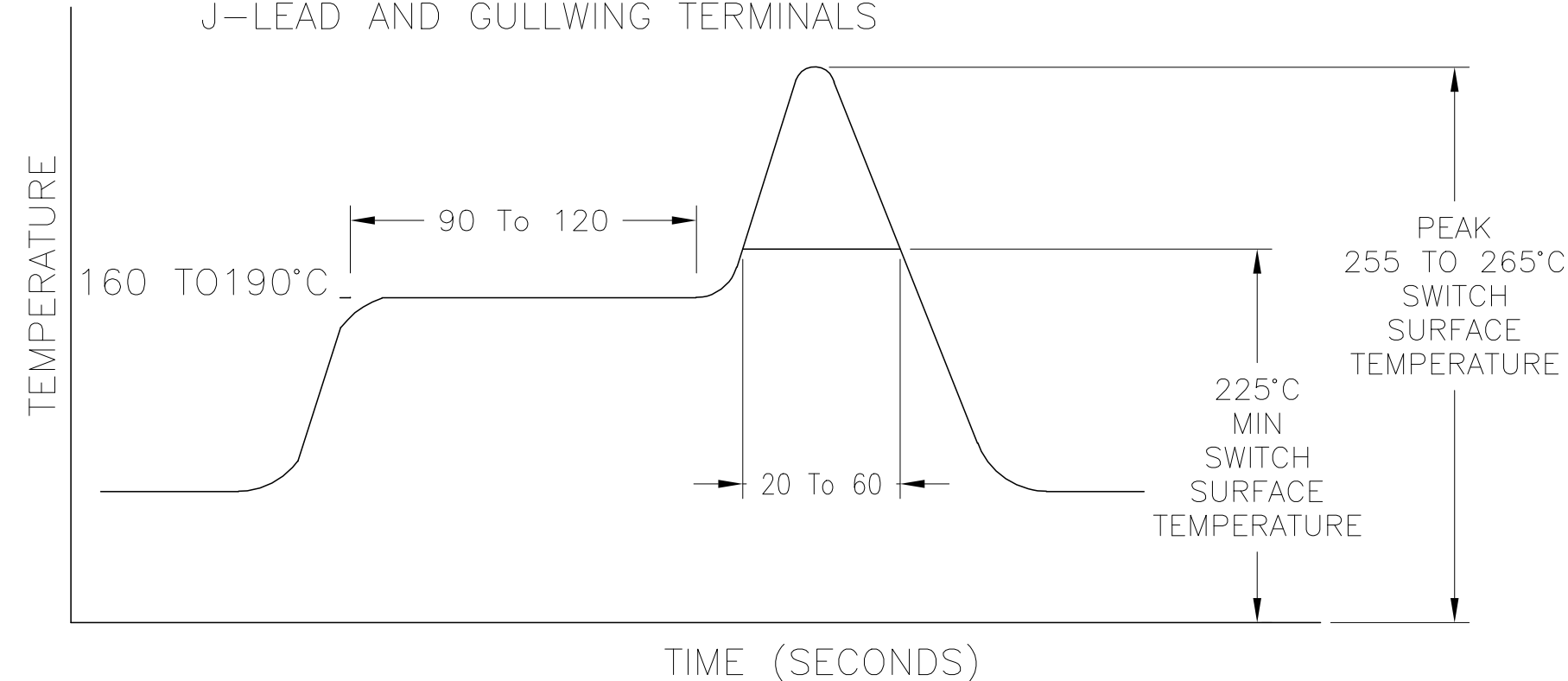
SPECIFICATIONS:

OPERATING CURRENT, 0.4VA @ 20VAC OR DC, MAXIMUM.  
 MINIMUM SWITCHING CURRENT, 0.1µA @ 1mV MINIMUM.  
 MAXIMUM SWITCHING CURRENT(DURING MAKE OR BREAK), 10mA@5VDC  
 NONE SWITCHING CURRENT 100mA@50VDC MAXIMUM  
 INITIAL CONTACT RESISTANCE, 100 MILLIOHMS MAX. @ 2V DC 10MILLIAMP  
 CONTACT RESISTANCE AFTER TEST AND PCB TERMINATION, 300 MILLIOHMS MAX.  
 INSULATION RESISTANCE, 1,000 MEGOHMS MIN. @ 250 VDC  
 DIELECTRIC STRENGTH, 250 VAC , 1 MINUTE  
 ELECTRICAL LIFE, 10,000 ACTUATIONS MIN. @ 5V DC 10MILLIAMP  
 MECHANICAL LIFE, 10,000 ACTUATIONS MIN. AT NO LOAD  
 INITIAL ACTUATION TORQUE, 2.0 TO 19.6mN.m.  
 TEMPERATURE RANGE, -40 TO +85°C

SOLDERING CONDITIONS

MANUAL	TEMPERATURE OF SOLDER IRON TIP: 320°C MAX. FOR 4±1 SECONDS	PRINTED CIRCUIT BOARD THICKNESS 1.6
WAVE (FOR THROUGH-HOLE)	PREHEAT 100 TO 105°C FOR 30±5 SECONDS	
	SOLDER TEMPERATURE 265°C±3°C FOR 8±2 SECONDS	
REFLOW (FOR GULLWING AND J-LEAD)	PREHEAT 160 TO 190°C FOR 90 TO 120 SECONDS	
	REFLOW TEMPERATURE 225°C (SWITCH SURFACE) FOR 20 TO 60 SECONDS	
	PEAK TEMPERATURE 255 TO 265°C (SWITCH SURFACE)	
MAXIMUM NUMBER OF EXPOSURES TO REFLOW PROCESS IS 2		

REFLOW SOLDER PROFILE FOR J-LEAD AND GULLWING TERMINALS



1	N/A	STAINLESS STEEL	PLATE	7
1	GOLD OVER NICKEL	COPPER ALLOY	CONTACT	6
1	N/A	FPM (FLUOROCARBON)	O-RING	5
1	WHITE	LCP	ACTUATOR	4
1	GRAY	POLYPHENYLENE SULFIDE	COVER	3
6	GOLD OVER NICKEL	BRASS	TERMINAL	2
1	BLACK	POLYPHENYLENE SULFIDE	CASE	1
QTY	FINISH/COLOR	MATERIAL	COMPONENT	ITEM

THIS DRAWING IS A CONTROLLED DOCUMENT.

DWN 19JUL2022 SATHISH KUMAR\_G  
 CHK 19JUL2022 ALEXANDER, SHARPE  
 APVD 19JUL2022 ALEXANDER, SHARPE

TE Connectivity

NAME: MRSS, MINIATURE ROTARY SWITCH SERIES, VERTICAL, 2.54 GRAY, LASER MARKING

SIZE: A2 CAGE CODE: 00779 DRAWING NO: 2396233 RESTRICTED TO: -

MATERIAL: - DIMENSIONS: mm TOLERANCES UNLESS OTHERWISE SPECIFIED: 0 PLC ± = 1 PLC ± = 2 PLC ± = 3 PLC ± = 4 PLC ± = ANGLES FINISH: -

WEIGHT: - APPLICATION SPEC: -

CUSTOMER DRAWING SCALE: 8:1 SHEET: 8 of 12 REV: 1

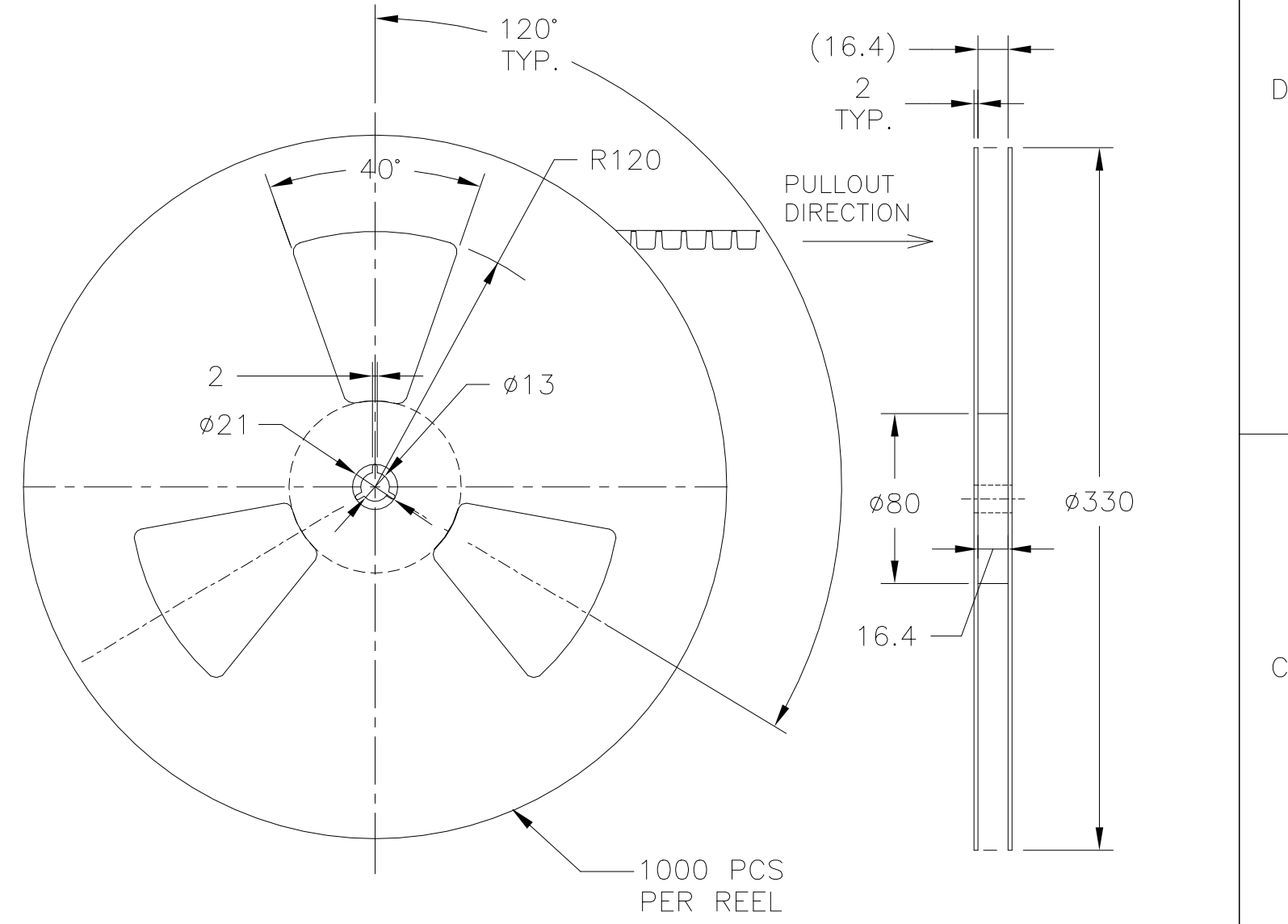
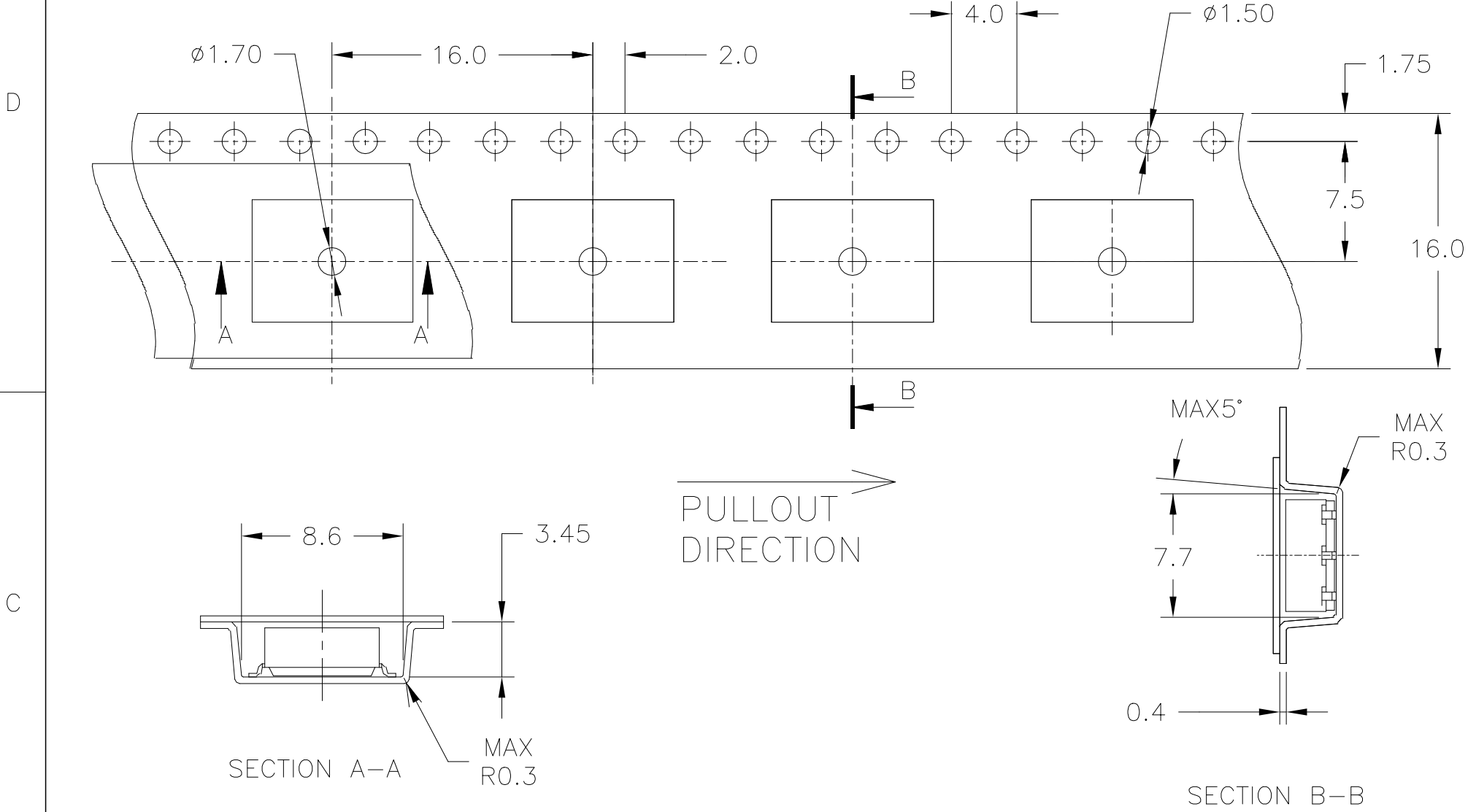
PRELIMINARY

2396233

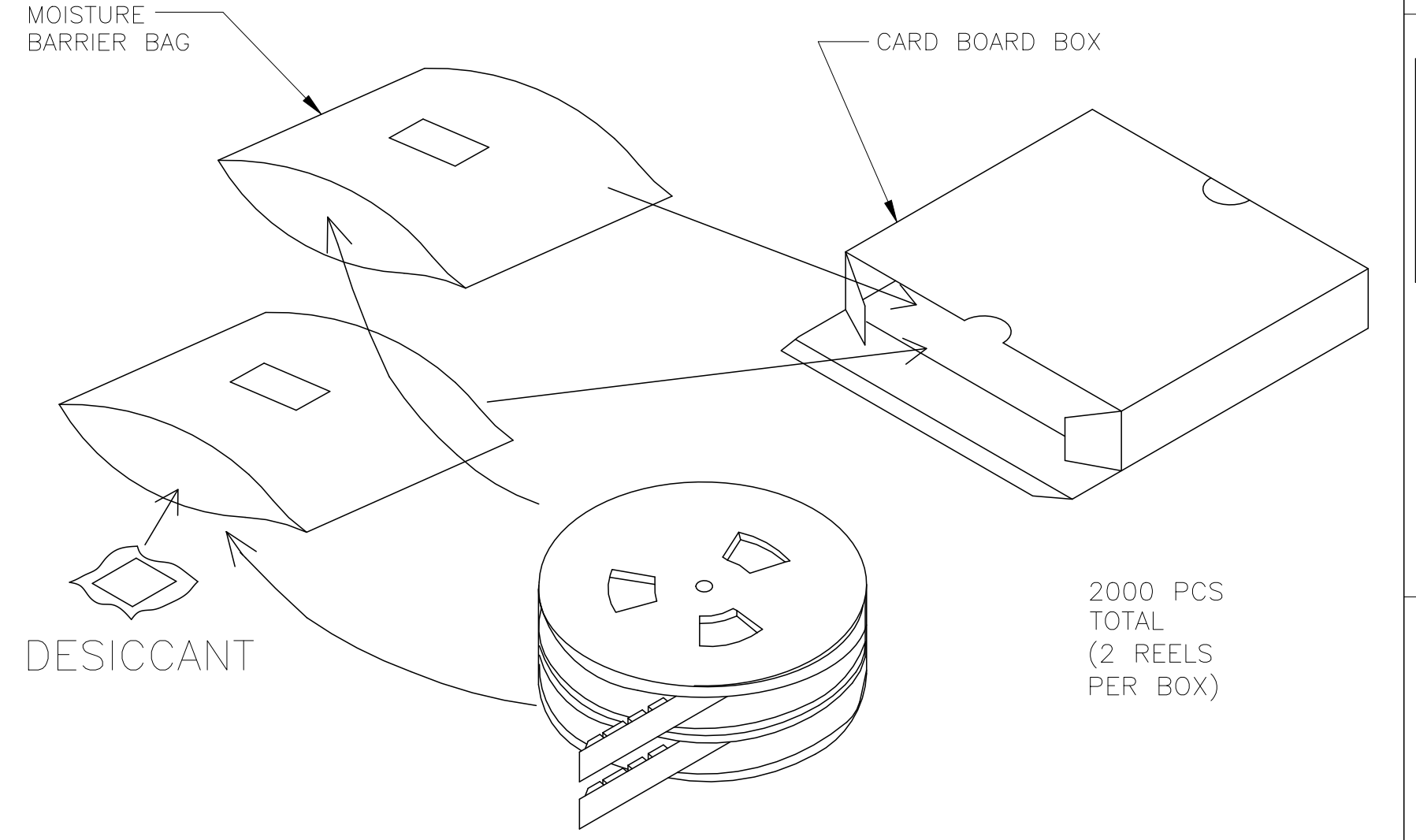
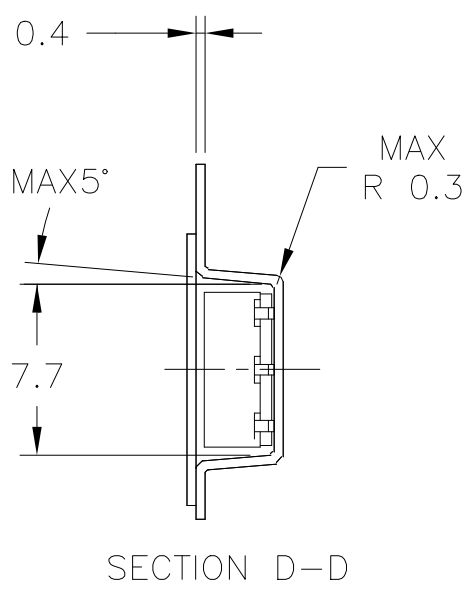
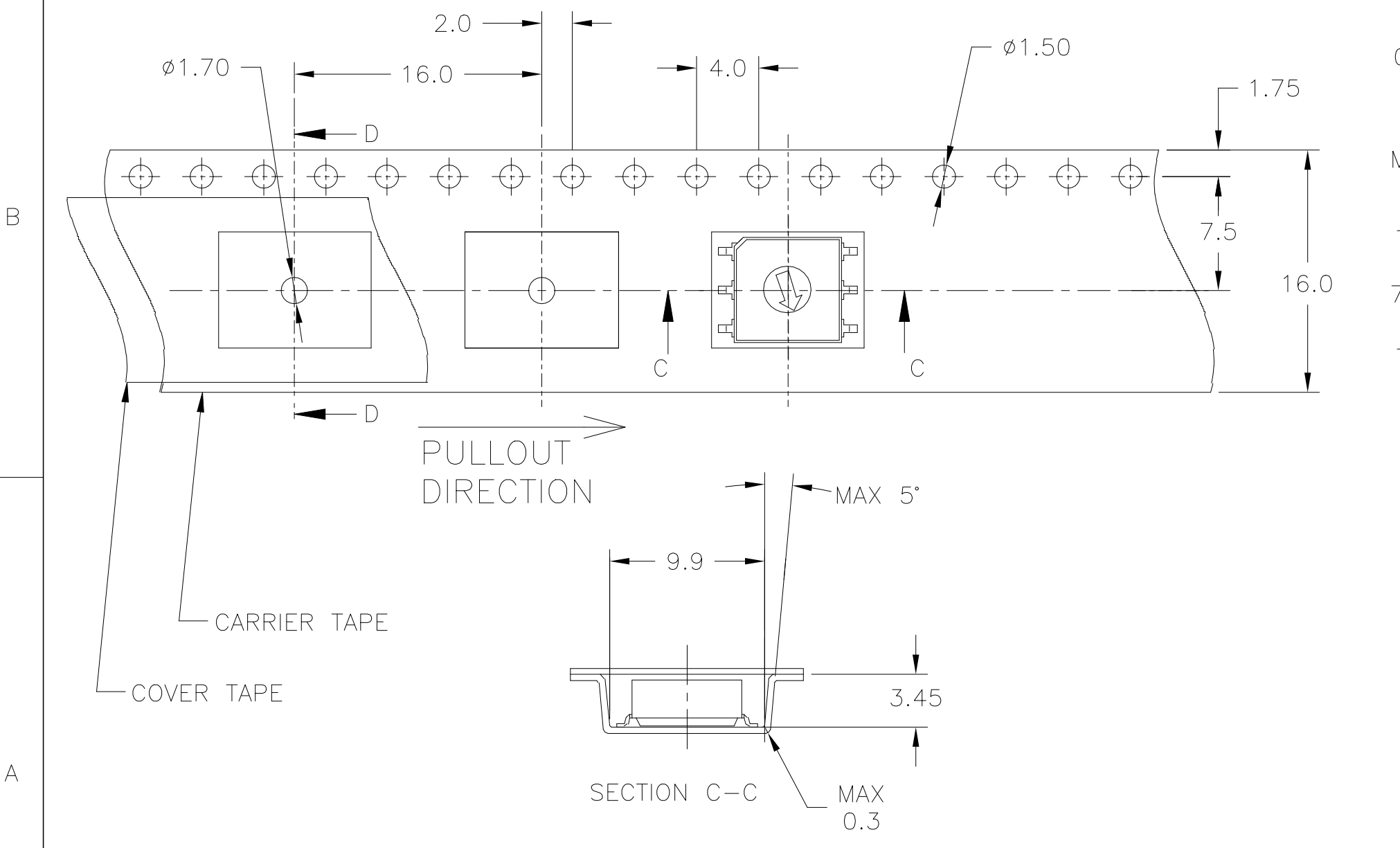


PACKAGING SPECIFICATIONS  
TAPE AND REEL FOR SMT, J-LEAD TERMINALS

REVISIONS					
P	LTR	DESCRIPTION	DATE	DWN	APVD
-	-	SEE SHEET 1	-	-	-



TAPE AND REEL FOR SMT, GULLWING TERMINALS

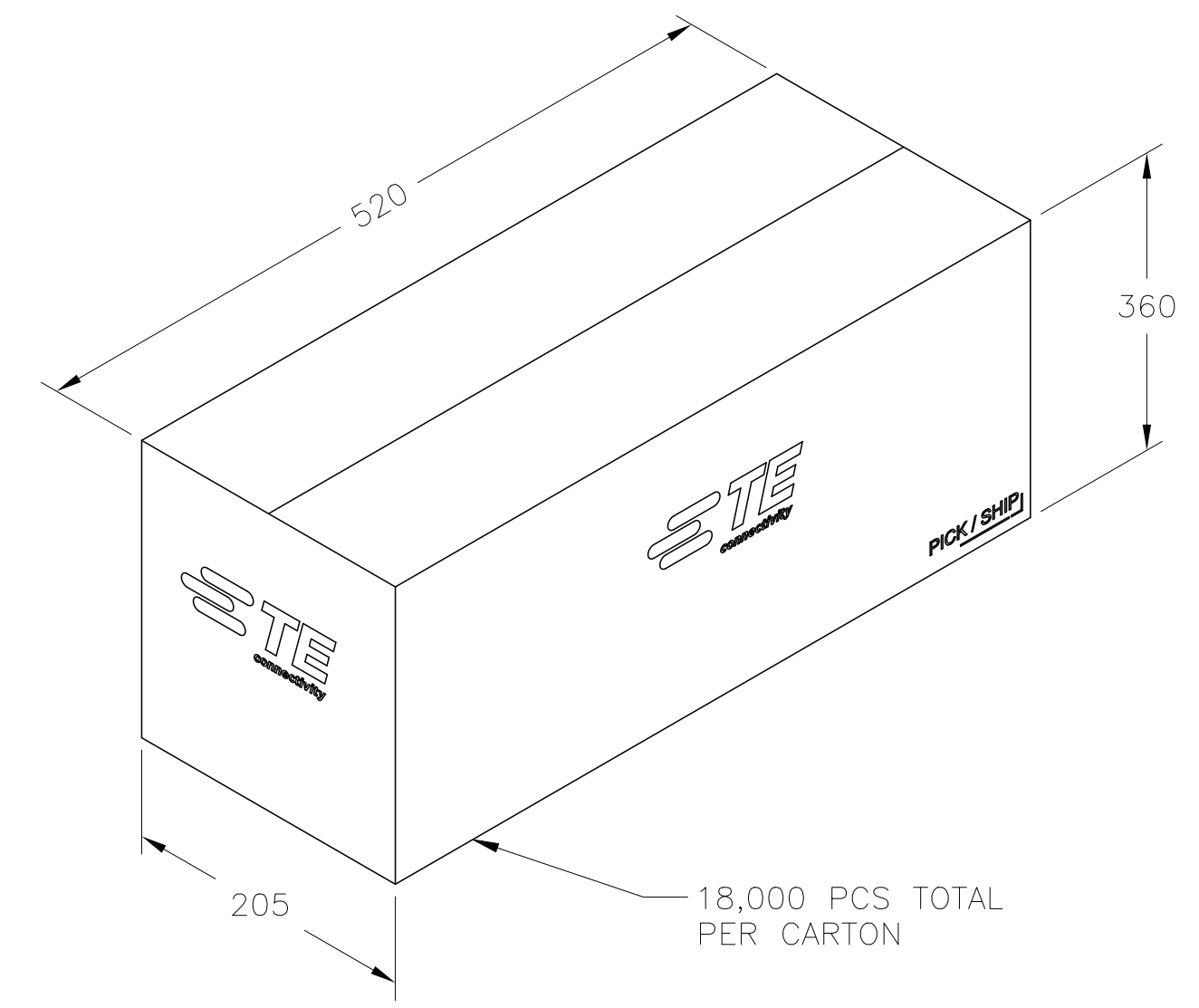
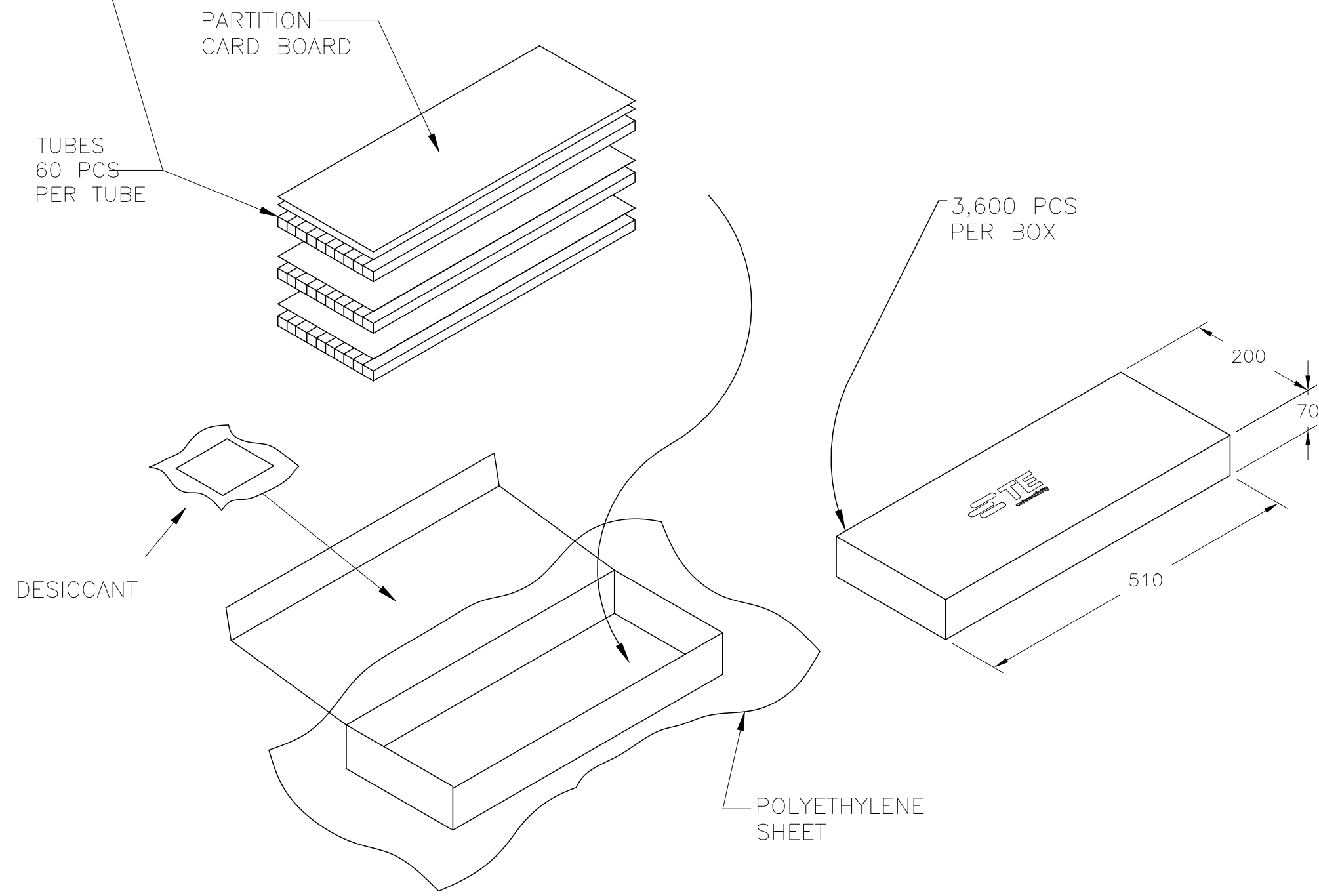
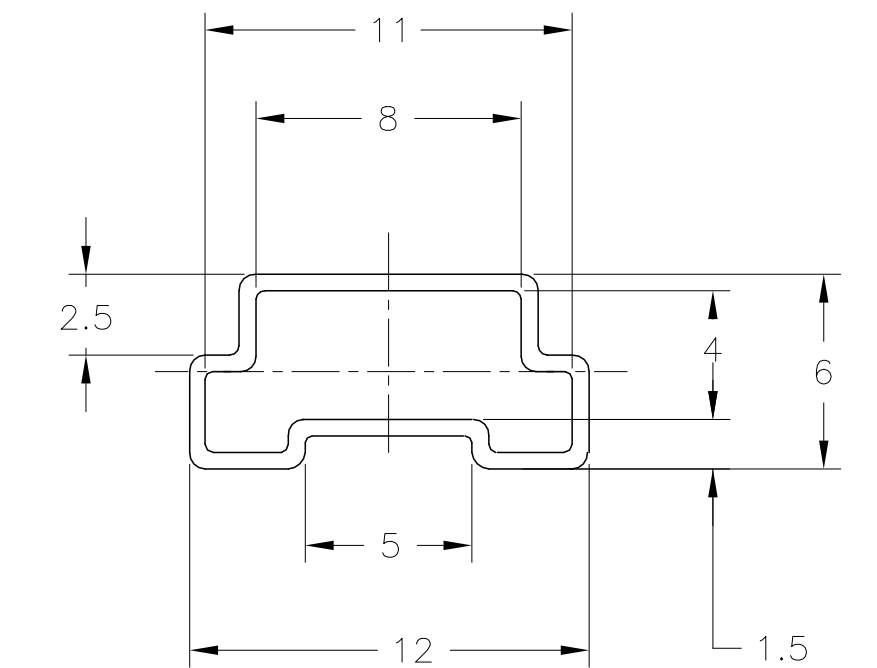
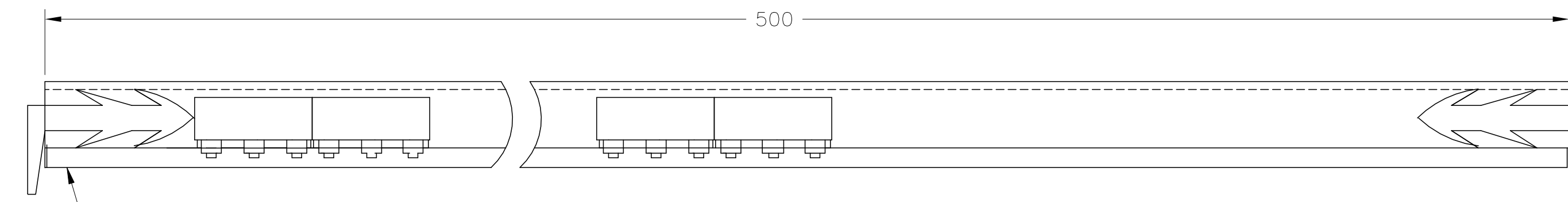
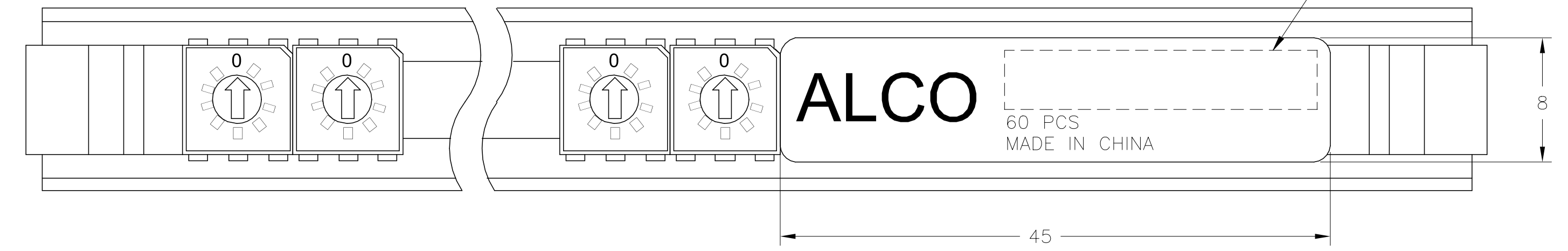


**PRELIMINARY**

THIS DRAWING IS A CONTROLLED DOCUMENT.		DWN 19JUL2022 SATHISH KUMAR_G	TE Connectivity																
DIMENSIONS: mm		CHK 19JUL2022 ALEXANDER, SHARPE																	
TOLERANCES UNLESS OTHERWISE SPECIFIED:		APVD 19JUL2022 ALEXANDER, SHARPE	NAME MRSS, MINIATURE ROTARY SWITCH SERIES, VERTICAL, 2.54 GRAY, LASER MARKING																
<table border="1"> <tr><td>0 PLG</td><td>±</td><td>-</td></tr> <tr><td>1 PLG</td><td>±</td><td>-</td></tr> <tr><td>2 PLG</td><td>±</td><td>-</td></tr> <tr><td>3 PLG</td><td>±</td><td>-</td></tr> <tr><td>4 PLG</td><td>±</td><td>-</td></tr> </table>		0 PLG	±	-	1 PLG	±	-	2 PLG	±	-	3 PLG	±	-	4 PLG	±	-	PRODUCT SPEC	SIZE CAGE CODE DRAWING NO	
0 PLG	±	-																	
1 PLG	±	-																	
2 PLG	±	-																	
3 PLG	±	-																	
4 PLG	±	-																	
<table border="1"> <tr><td>ANGLES</td><td>±</td><td>-</td></tr> <tr><td>FINISH</td><td>-</td><td>-</td></tr> </table>		ANGLES	±	-	FINISH	-	-	APPLICATION SPEC	RESTRICTED TO										
ANGLES	±	-																	
FINISH	-	-																	
MATERIAL		WEIGHT	A2 00779	C=2396233															
		CUSTOMER DRAWING	SCALE 8:1	SHEET 9 of 12 REV 1															

# PACKAGING SPECIFICATIONS TUBE FOR SMT, J-LEAD AND GULLWING TERMINALS

REVISIONS					
P	LTR	DESCRIPTION	DATE	DWN	APVD
-	-	SEE SHEET 1	-	-	-

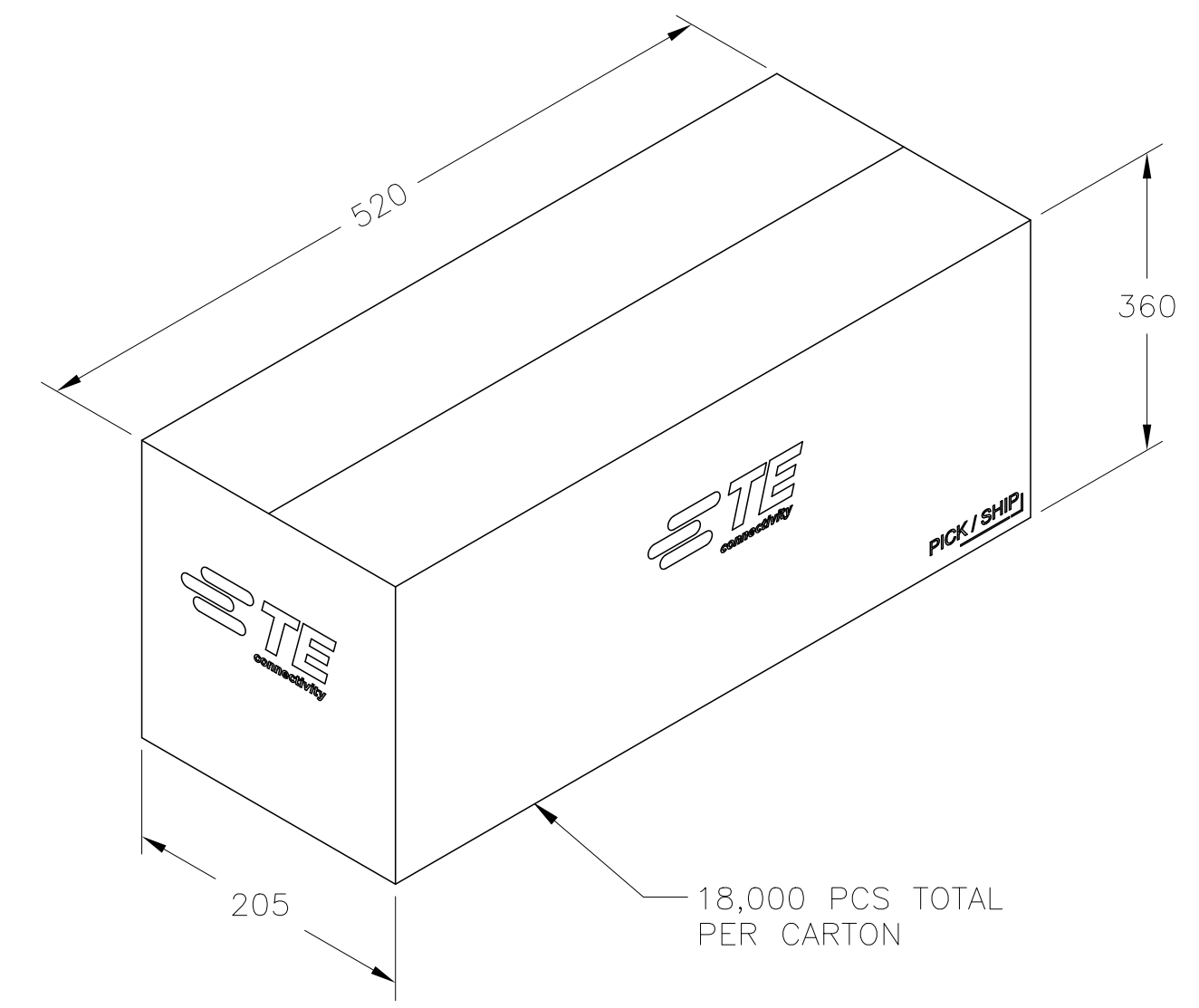
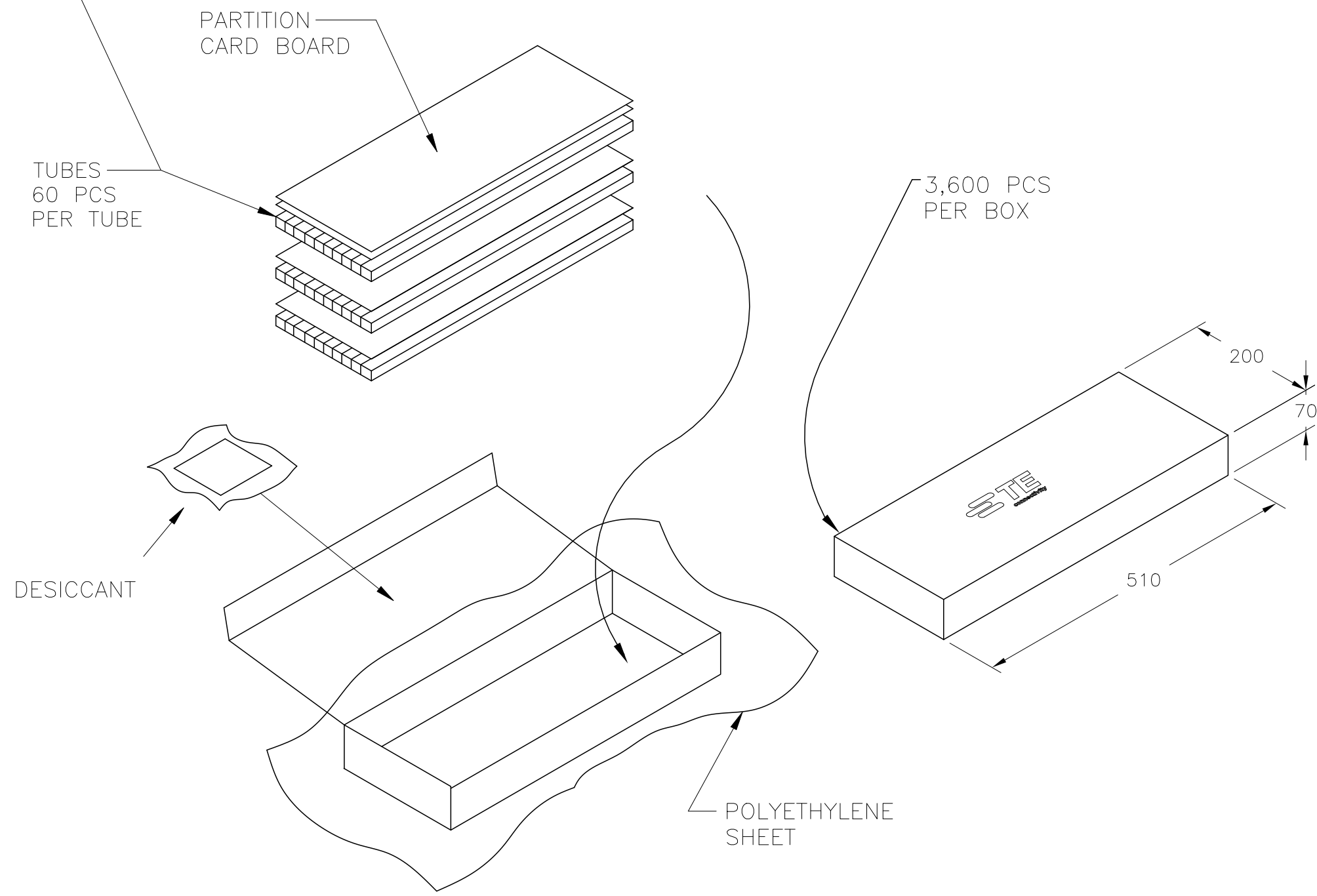
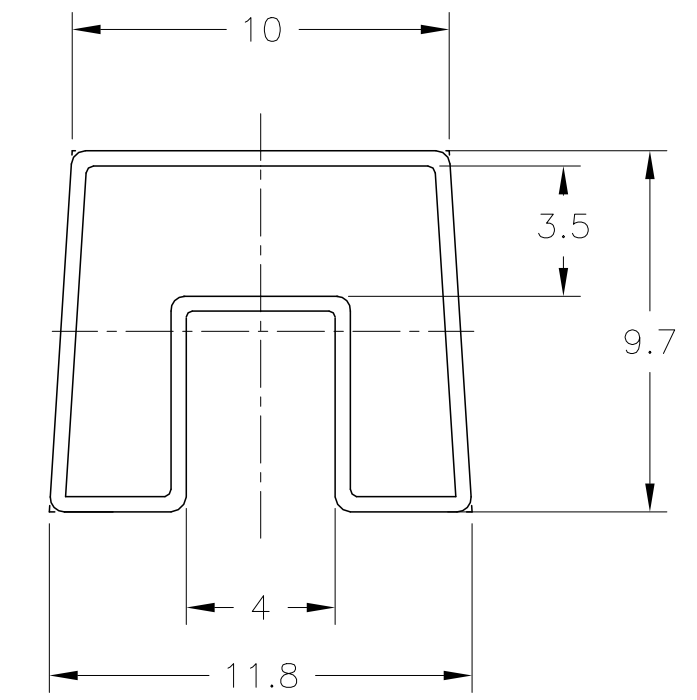
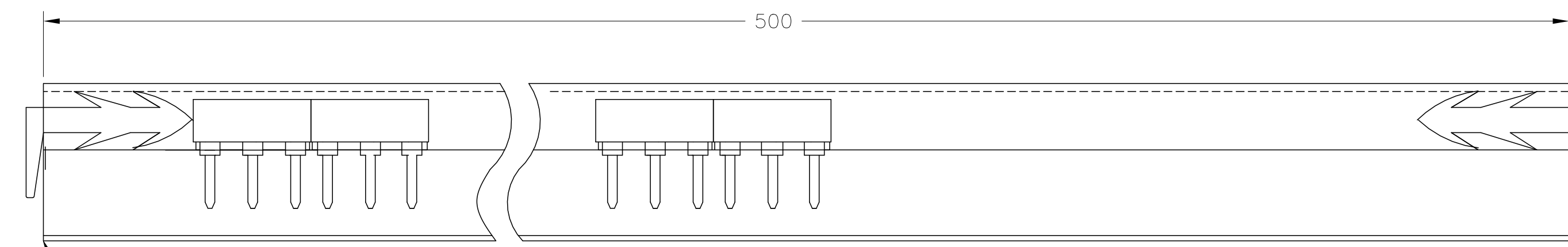
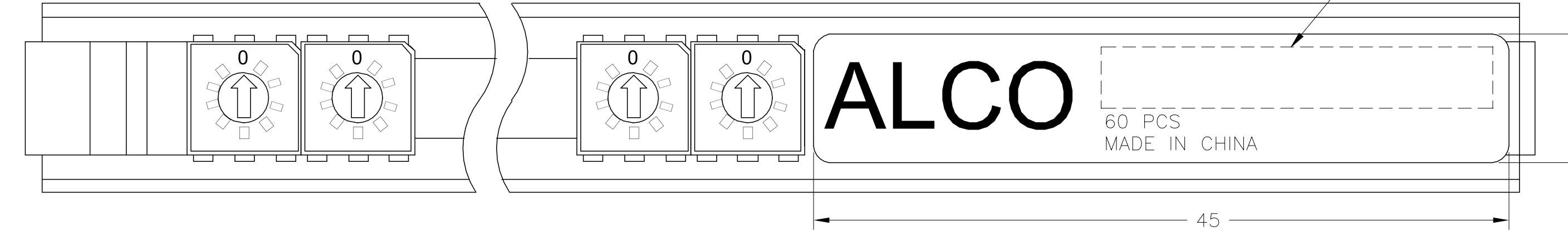


**PRELIMINARY**

THIS DRAWING IS A CONTROLLED DOCUMENT.		DWN 19JUL2022 SATHISH KUMAR_G	<b>STE</b> TE Connectivity																
DIMENSIONS: mm		CHK 19JUL2022 ALEXANDER, SHARPE																	
TOLERANCES UNLESS OTHERWISE SPECIFIED:		APVD 19JUL2022 ALEXANDER, SHARPE	NAME MRSS, MINIATURE ROTARY SWITCH SERIES, VERTICAL, 2.54 GRAY, LASER MARKING																
<table border="1"> <tr><td>0 PLC</td><td>±</td><td>-</td></tr> <tr><td>1 PLC</td><td>±</td><td>-</td></tr> <tr><td>2 PLC</td><td>±</td><td>-</td></tr> <tr><td>3 PLC</td><td>±</td><td>-</td></tr> <tr><td>4 PLC</td><td>±</td><td>-</td></tr> </table>		0 PLC	±	-	1 PLC	±	-	2 PLC	±	-	3 PLC	±	-	4 PLC	±	-	PRODUCT SPEC	SIZE CAGE CODE DRAWING NO	
0 PLC	±	-																	
1 PLC	±	-																	
2 PLC	±	-																	
3 PLC	±	-																	
4 PLC	±	-																	
MATERIAL		APPLICATION SPEC	RESTRICTED TO																
FINISH		WEIGHT	A2 00779 C=2396233																
		CUSTOMER DRAWING	SCALE 8:1	SHEET 10 OF 12															
				REV 1															

# PACKAGING SPECIFICATIONS TUBE FOR THROUGH HOLE TERMINALS

REVISIONS					
P	LTR	DESCRIPTION	DATE	DWN	APVD
-	-	SEE SHEET 1	-	-	-



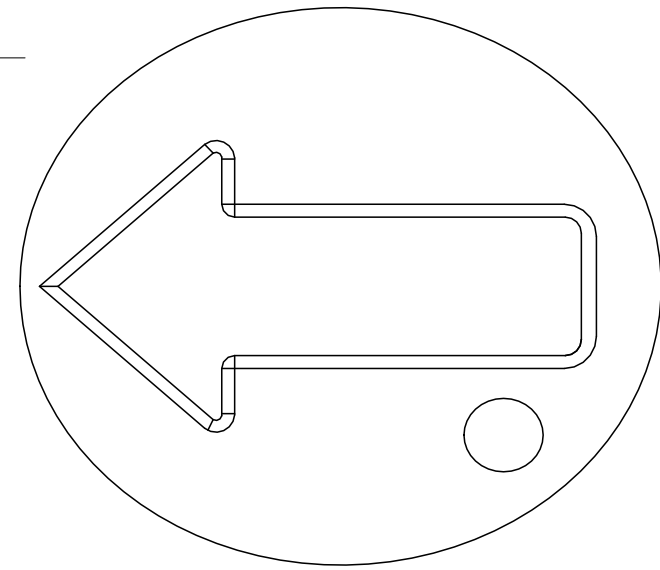
# PRELIMINARY

THIS DRAWING IS A CONTROLLED DOCUMENT.		DWN 19JUL2022 SATHISH KUMAR_G	<b>STE</b> TE Connectivity																	
DIMENSIONS: mm		CHK 19JUL2022 ALEXANDER, SHARPE																		
TOLERANCES UNLESS OTHERWISE SPECIFIED:		APVD 19JUL2022 ALEXANDER, SHARPE	NAME MRSS, MINIATURE ROTARY SWITCH SERIES, VERTICAL, 2.54 GRAY, LASER MARKING																	
<table border="1"> <tr><td>0 PLC</td><td>±</td><td>-</td></tr> <tr><td>1 PLC</td><td>±</td><td>-</td></tr> <tr><td>2 PLC</td><td>±</td><td>-</td></tr> <tr><td>3 PLC</td><td>±</td><td>-</td></tr> <tr><td>4 PLC</td><td>±</td><td>-</td></tr> </table>		0 PLC	±	-	1 PLC	±	-	2 PLC	±	-	3 PLC	±	-	4 PLC	±	-	PRODUCT SPEC	SIZE CAGE CODE DRAWING NO RESTRICTED TO		
0 PLC	±	-																		
1 PLC	±	-																		
2 PLC	±	-																		
3 PLC	±	-																		
4 PLC	±	-																		
MATERIAL		APPLICATION SPEC	A2 00779 C=2396233																	
FINISH		WEIGHT	SCALE 8:1 SHEET 11 OF 12 REV 1																	
		CUSTOMER DRAWING																		

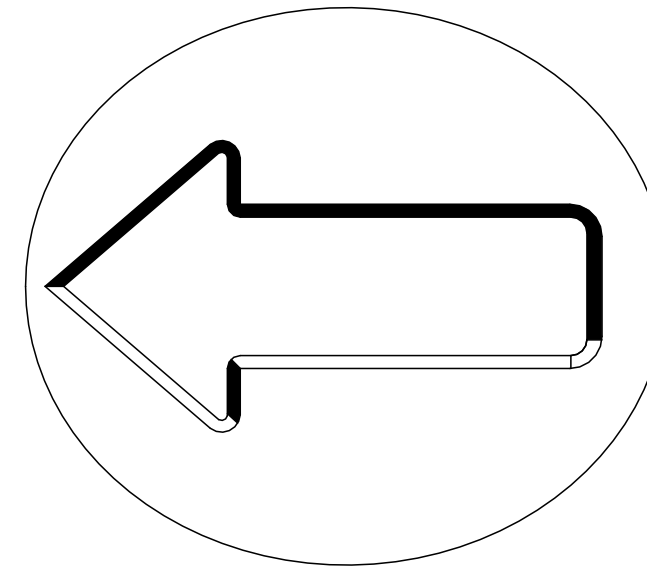
CODE IDENTIFIER ON ACTUATOR

REVISIONS					
P	LTR	DESCRIPTION	DATE	DWN	APVD
-	-	SEE SHEET 1	-	-	-

COMPLIMENT CODE-

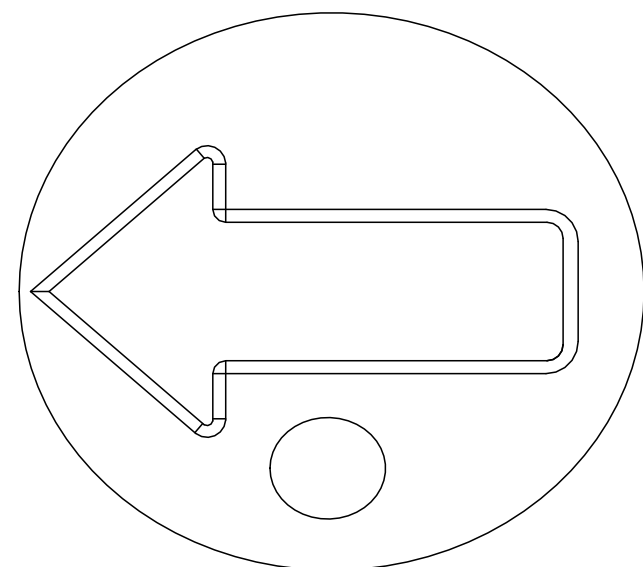


10 POSITION

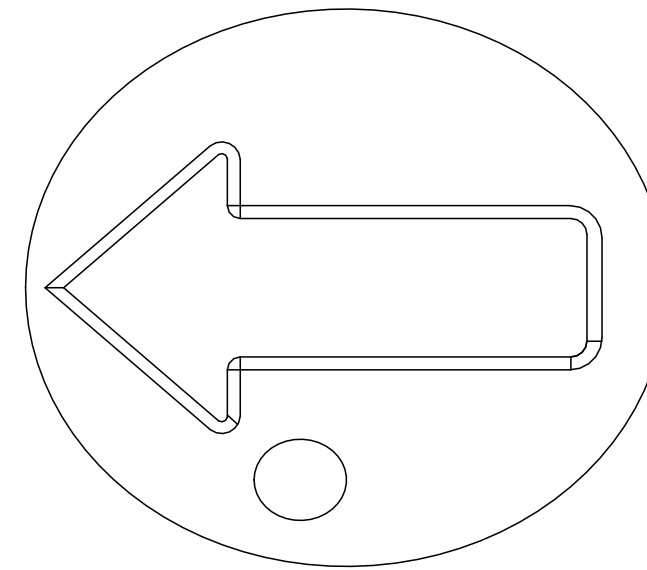


16 POSITION (NO IDENTIFIER)

GRAY CODE-

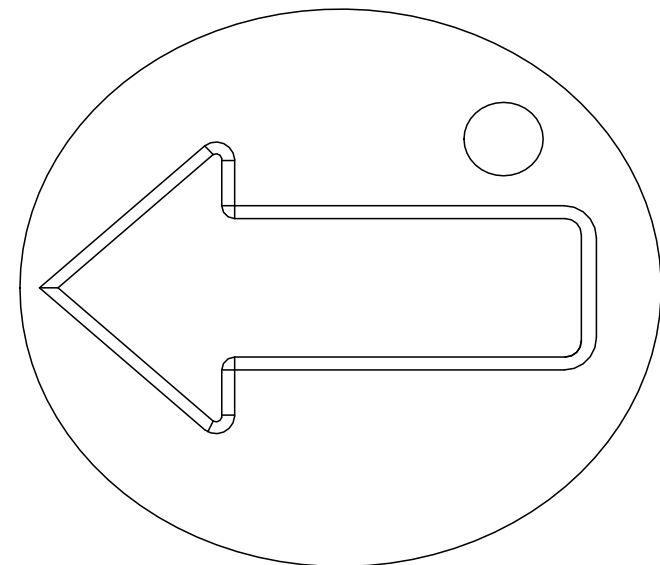


10 POSITION

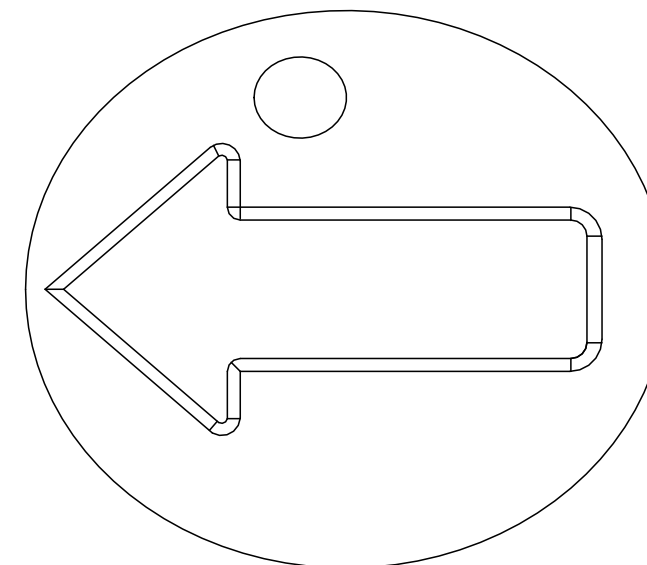


16 POSITION

REAL CODE-



10 POSITION



16 POSITION

**PRELIMINARY**

THIS DRAWING IS A CONTROLLED DOCUMENT.		DWN 19JUL2022 SATHISH KUMAR G	<b>TE</b> TE Connectivity																
DIMENSIONS: mm		CHK 19JUL2022 ALEXANDER, SHARPE																	
TOLERANCES UNLESS OTHERWISE SPECIFIED:		APVD 19JUL2022 ALEXANDER, SHARPE	NAME MRSS, MINIATURE ROTARY SWITCH SERIES, VERTICAL, 2.54 GRAY, LASER MARKING																
<table border="1"> <tr><td>0 PLC</td><td>±</td><td>=</td></tr> <tr><td>1 PLC</td><td>±</td><td>=</td></tr> <tr><td>2 PLC</td><td>±</td><td>=</td></tr> <tr><td>3 PLC</td><td>±</td><td>=</td></tr> <tr><td>4 PLC</td><td>±</td><td>=</td></tr> </table>		0 PLC	±	=	1 PLC	±	=	2 PLC	±	=	3 PLC	±	=	4 PLC	±	=	PRODUCT SPEC	SIZE CAGE CODE DRAWING NO	
0 PLC	±	=																	
1 PLC	±	=																	
2 PLC	±	=																	
3 PLC	±	=																	
4 PLC	±	=																	
<table border="1"> <tr><td>ANGLES</td><td>±</td><td>=</td></tr> <tr><td>FINISH</td><td>-</td><td>-</td></tr> </table>		ANGLES	±	=	FINISH	-	-	APPLICATION SPEC	RESTRICTED TO										
ANGLES	±	=																	
FINISH	-	-																	
MATERIAL		WEIGHT	A2 00779	C=2396233															
		CUSTOMER DRAWING	SCALE 8:1	SHEET 12 OF 12 REV 1															